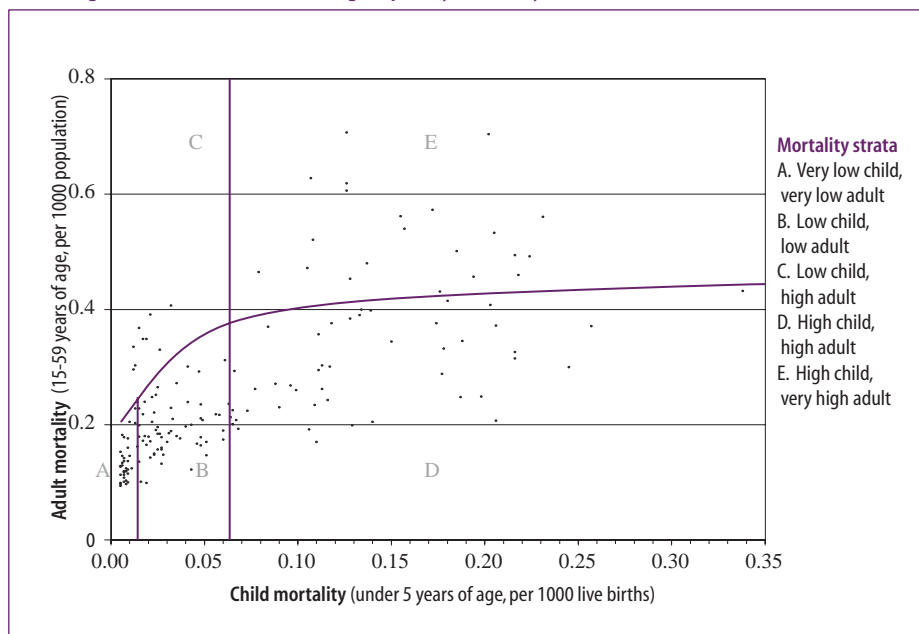


LIST OF MEMBER STATES BY WHO REGION AND MORTALITY STRATUM

To aid in cause of death analyses, burden of disease analyses, and comparative risk assessment, the 191 Member States of WHO have been divided into five mortality strata on the basis of their levels of child mortality under five years of age (5q0) and 15 - 59-year-old male mortality (45q15). The classification of Member States into the mortality strata was carried out using population estimates for 1999 (UN Population Division 1998) and estimates of 5q0 and 45q15 based on WHO analyses of mortality rates for 1999.

Quintiles of the distribution of 5q0 (both sexes combined) were used to define a *very low child mortality* group (1st quintile), a *low child mortality* group (2nd and 3rd quintiles) and a *high child mortality* group (4th and 5th quintiles). Adult mortality 45q15 was regressed on 5q0 and the regression line used to divide countries with high child mortality into *high adult mortality* (stratum D) and *very high adult mortality* (stratum E). Stratum E includes the countries in sub-Saharan Africa where HIV/AIDS has had a very substantial impact.

Annex Figure 1. WHO Member States grouped by mortality strata, 1999



When these mortality strata are applied to the six WHO regions, they produce 14 epidemiological subregions, which are used throughout this report and in the Annex Tables to present results. The mortality strata to which WHO Member States are classified are listed below. This classification has no official status and is for analytical purposes only.

African Region

Algeria — AFR-D
Angola — AFR-D
Benin — AFR-D
Botswana — AFR-E
Burkina Faso — AFR-D
Burundi — AFR-E
Cameroon — AFR-D
Cape Verde — AFR-D
Central African Republic — AFR-E
Chad — AFR-D
Comoros — AFR-D
Congo — AFR-E
Côte d'Ivoire — AFR-E
Democratic Republic of the Congo — AFR-E
Equatorial Guinea — AFR-D
Eritrea — AFR-E
Ethiopia — AFR-E
Gabon — AFR-D
Gambia — AFR-D
Ghana — AFR-D
Guinea — AFR-D
Guinea-Bissau — AFR-D
Kenya — AFR-E
Lesotho — AFR-E
Liberia — AFR-D
Madagascar — AFR-D
Malawi — AFR-E
Mali — AFR-D
Mauritania — AFR-D
Mauritius — AFR-D
Mozambique — AFR-E
Namibia — AFR-E
Niger — AFR-D
Nigeria — AFR-D
Rwanda — AFR-E
Sao Tome and Principe — AFR-D
Senegal — AFR-D
Seychelles — AFR-D
Sierra Leone — AFR-D
South Africa — AFR-E
Swaziland — AFR-E
Togo — AFR-D
Uganda — AFR-E
United Republic of Tanzania — AFR-E
Zambia — AFR-E
Zimbabwe — AFR-E

Region of the Americas

Antigua and Barbuda — AMR-B
Argentina — AMR-B
Bahamas — AMR-B
Barbados — AMR-B
Belize — AMR-B
Bolivia — AMR-D
Brazil — AMR-B
Canada — AMR-A
Chile — AMR-B
Colombia — AMR-B
Costa Rica — AMR-B
Cuba — AMR-A
Dominica — AMR-B
Dominican Republic — AMR-B
Ecuador — AMR-D
El Salvador — AMR-B
Grenada — AMR-B
Guatemala — AMR-D
Guyana — AMR-B
Haiti — AMR-D
Honduras — AMR-B
Jamaica — AMR-B
Mexico — AMR-B
Nicaragua — AMR-D
Panama — AMR-B
Paraguay — AMR-B
Peru — AMR-D
Saint Kitts and Nevis — AMR-B
Saint Lucia — AMR-B
Saint Vincent and the Grenadines — AMR-B
Suriname — AMR-B
Trinidad and Tobago — AMR-B
United States of America — AMR-A
Uruguay — AMR-B
Venezuela, Bolivarian Republic of — AMR-B

Eastern Mediterranean Region

Afghanistan — EMR-D
Bahrain — EMR-B
Cyprus — EMR-B
Djibouti — EMR-D
Egypt — EMR-D
Iran, Islamic Republic of — EMR-B
Iraq — EMR-D
Jordan — EMR-B
Kuwait — EMR-B
Lebanon — EMR-B
Libyan Arab Jamahiriya — EMR-B
Morocco — EMR-D
Oman — EMR-B
Pakistan — EMR-D
Qatar — EMR-B
Saudi Arabia — EMR-B
Somalia — EMR-D
Sudan — EMR-D
Syrian Arab Republic — EMR-B
Tunisia — EMR-B
United Arab Emirates — EMR-B
Yemen — EMR-D

Mortality strata

A. Very low child, very low adult
 B. Low child, low adult
 C. Low child, high adult
 D. High child, high adult
 E. High child, very high adult

European Region

Albania – EUR-B
Andorra – EUR-A
Armenia – EUR-B
Austria – EUR-A
Azerbaijan – EUR-B
Belarus – EUR-C
Belgium – EUR-A
Bosnia and Herzegovina – EUR-B
Bulgaria – EUR-B
Croatia – EUR-A
Czech Republic – EUR-A
Denmark – EUR-A
Estonia – EUR-C
Finland – EUR-A
France – EUR-A
Georgia – EUR-B
Germany – EUR-A
Greece – EUR-A
Hungary – EUR-C
Iceland – EUR-A
Ireland – EUR-A
Israel – EUR-A
Italy – EUR-A
Kazakhstan – EUR-C
Kyrgyzstan – EUR-B
Latvia – EUR-C
Lithuania – EUR-C
Luxembourg – EUR-A
Malta – EUR-A
Monaco – EUR-A
Netherlands – EUR-A
Norway – EUR-A
Poland – EUR-B
Portugal – EUR-A
Republic of Moldova – EUR-C
Romania – EUR-B
Russian Federation – EUR-C
San Marino – EUR-A
Slovakia – EUR-B
Slovenia – EUR-A
Spain – EUR-A
Sweden – EUR-A
Switzerland – EUR-A
Tajikistan – EUR-B
**The former Yugoslav
Republic of Macedonia** – EUR-B
Turkey – EUR-B
Turkmenistan – EUR-B
Ukraine – EUR-C
United Kingdom – EUR-A
Uzbekistan – EUR-B
Yugoslavia – EUR-B

South-East Asia Region

Bangladesh – SEAR-D
Bhutan – SEAR-D
**Democratic People's
Republic of Korea** – SEAR-D
India – SEAR-D
Indonesia – SEAR-B
Maldives – SEAR-D
Myanmar – SEAR-D
Nepal – SEAR-D
Sri Lanka – SEAR-B
Thailand – SEAR-B

Western Pacific Region

Australia – WPR-A
Brunei Darussalam – WPR-A
Cambodia – WPR-B
China – WPR-B
Cook Islands – WPR-B
Fiji – WPR-B
Japan – WPR-A
Kiribati – WPR-B
**Lao People's
Democratic Republic** – WPR-B
Malaysia – WPR-B
Marshall Islands – WPR-B
**Micronesia, Federated
States of** – WPR-B
Mongolia – WPR-B
Nauru – WPR-B
New Zealand – WPR-A
Niue – WPR-B
Palau – WPR-B
Papua New Guinea – WPR-B
Philippines – WPR-B
Republic of Korea – WPR-B
Samoa – WPR-B
Singapore – WPR-A
Solomon Islands – WPR-B
Tonga – WPR-B
Tuvalu – WPR-B
Vanuatu – WPR-B
Viet Nam – WPR-B

ACKNOWLEDGEMENTS

Headquarters advisory group

Markus Behrend
Ruth Bonita
John Clements
Chris Dye
Joan Dzenowagis
Michael Eriksen
David Evans
Metin Gulmezoglum
Susan Holck
Christopher Murray
Thomson Prentice
Iqbal Shah
Kathleen Strong
Tessa Tan-Torres Edejer
Paul Van Look
Yasmin Von Schirnding
Maged Younes

Regional reference group

Billo Mounkaila Abdou
Sussan Bassiri
David Brandling-Bennet
Anca Dumitrescu
Myint Htwe
Soe Ynunt-U

Cost-effectiveness assessment

Taghreed Adam
Moses Aikins
Perihan Al-Husseini
Rob Baltussen
James K. Bartram
Robert E. Black
Ilja Borysenko
Cynthia Boschi-Pinto
Daniel Chisholm
Christina Ciecierski
Gerald Dziekan
Steeve Ebener
Sahra El-Ghannam
David Evans
Majid Ezzati
Valery Feigin
Laurence Haller
Chika Hayashi
Yunpeng Huang
Jose Hueb
Yvan Hutin
Raymond Hutubessy
Benjamin Johns
Jeremy Lauer
Carlene Lawes
Julia Lowe
Colin Mathers
Sumi Mehta
Christopher Murray
Pat Neff Walker

Louis Niessen
Kevin O'Reilly
Annette Pruess
Ken Redekop
Juergen Rehm
Anthony Rodgers
Nataly Sabharwal
Joshua Salomon
George Schmid
Bernhard Schwartzlander
Anne-Marie Sevcsik
Mona Sharan
Kenji Shibuya
John Stover
Michael Sweat
Tessa Tan-Torres Edejer
Niels Tomijima
Mark Van Ommeren
Ying Diana Wu

Risk assessment

Alcohol
Ulrich Frick
Gerhard Gmel
Kathryn Graham
David Jernigan
Maristela Monteiro
Jürgen Rehm
Nina Rehn
Robin Room
Christopher T. Sempos

Urban air pollution

Ross Anderson
Aaron Cohen
Kersten Gutschmidt
Michal Krzyzanowski
Nino Künzli
Bart Ostro
Kiran Pandey
Arden Pope
Isabelle Romieu
Jonathan Samet
Kirk R. Smith

Work-related ergonomic stressors

Jim Leigh
Deborah Nelson
Sharonne Phillips
Annette Pruess

Blood pressure

Paul Elliott
Malcolm Law
Carlene Lawes
Stephen MacMahon
Anthony Rodgers
Stephen Vander Hoorn

Breastfeeding

Ana Pilar Betrán
Mercedes de Onis
Jeremy Addison Lauer

Work-related carcinogens

Carlos Corvalan
Tim Driscoll
Marilyn Fingerhut
Jim Leigh
Deborah Nelson
Annette Pruess

Childhood sexual abuse

Gavin Andrews
Justine Corry
Cathy Issakidis
Tim Slade
Heather Swanston

Cholesterol

Malcolm Law
Carlene Lawes
Stephen MacMahon
Anthony Rodgers
Stephen Vander Hoorn

Climate change

Diarmid Campbell-Lendrum
Sally Edwards
Sari Kovats
Paul Wilkinson

Fruit and vegetable intake

Louise Causer
Karen Lock
Martin Mckee
Joceline Pomerleau

Illicit drugs

Louisa Degenhardt
Wayne Hall
Michael Lynskey
Matthew Warner-Smith

Indoor smoke from solid fuels

Mirjam Feuz
Sumi Mehta
Kirk R. Smith

Unsafe health care injections

Gregory L. Armstrong
Yvan J. F. Hutin
Anja Hauri

Iodine deficiency

Robert E. Black
Stephen Fishman
Adnan Ali Hyder
Luke Mullany

Iron deficiency

Robert E. Black
Luke Mullany
Rebecca J. Stoltzfus

Lead exposure

José Luis Ayuso
Lorna Fewtrell
Philip Landrigan
Annette Pruess

Underweight

Robert E. Black
Stephen Fishman
Adnan Ali Hyder
Luke Mullany
Robert E. Black
Laura E. Caulfield

Work-related noise

Marisol Concha
Carlos Corvalan
Marilyn Fingerhut
Deborah Nelson
Robert Nelson

Work-related airborne particulates

Carlos Corvalan
Tim Driscoll
Marilyn Fingerhut
Jim Leigh
Deborah Nelson
Annette Pruess

Work-related risk factors for injuries

Marisol Concha
Carlos Corvalan
Marilyn Fingerhut
Jim Leigh
Deborah Nelson
Annette Pruess

Overweight

Rachel Jackson-Leach
W. Philip T. James
Eleni Kalamara
Cliona Ni Mhurchu
Chizuru Nishida
Neville J. Rigby
Anthony Rodgers
Maryam Shayeghi

Physical inactivity

Tim Armstrong
Fiona Bull
Tracy Dixon
Sandra Ham
Andrea Neiman
Mike Pratt

Poverty

Tony Blakely
Simon Hales
Charlotte Kieft
Nick Wilson
Alistair Woodward

Tobacco

Majid Ezzati
Alan D. Lopez

Unsafe sex

John Cleland
Martine Collumbien
Makeda Gerressu

**Unsafe water, sanitation
and hygiene**

James K. Bartram
Lorna Fewtrell
David Kay
Annette Pruess

Vitamin A deficiency

Robert E. Black
Amy Rice
Keith P. West Jr

Zinc deficiency

Robert E. Black
Laura E. Caulfield

Text boxes**Causal web**

Miguel A. Hernán
James M. Robins
Uwe Siebert

Collective violence

David Meddings

**Coronary heart disease and
work stress**

Annette Pruess

Environmental tobacco smoke

Majid Ezzati
Alan D. Lopez
Kirk R. Smith

Genetics

Victor Boulyjenkov
Paul McKeigue
Pekka Puska

Housing and health

Carl-Gustaf Bornehag
Majid Ezzati
Yasmin von Schirmding

Interpersonal violence

Alex Butchart
Debarati Sapir

Life course

George Davey-Smith

Multiple causes

Robert Beaglehole

National nutrition campaigns

Rob Carter
Steven Crowley
Christine Stone
Theo Vos

Needlestick injuries

Annette Pruess

Nutritional transition

Barry Popkin

Occupational back pain

Supriya Lahiri
Charles Levenstein
Pia Makkanen

Patient safety

Itziar Larizgoitia
Silvester Yunkap Kwankam

**Population-wide strategies
for prevention**

Robert Beaglehole
Malcom Law
Pekka Puska

Protective factors

Krishna Bose
Richard Jessor
Carol Ryff
Burton Singer

Road traffic injuries

Tony Fletcher
Emma Hutchison
Marge Peden
Ian Roberts

Tuberculosis

Chris Dye

Other contributors**Administrative assistance**

Clarissa Gould-Thorpe

Data for figures

Malcom Law
Pekka Jousilahti
Hirotsugu Ueshima
Neville Young

Epidemiology input

Carlene Lawes
Patricia Priest

Statistical annex

Omar Ahmad
Christina Bernard
Carmen Dolea
Brodie Ferguson
Mie Inoue
Julie Levison
Dorothy Ma Fat
Colin Mathers
Chalapathi Rao
Tanuja Rastogi
Joshua Salomon
Kenji Shibuya
Claudia Stein
Edward Tachie-Menson
Niels Tomijima
Thomas Truelsen
Sarah Wild

Mortality

Emmanuella Gakidou
Mollie Hogan

National health accounts

Patricia Hernandez
Chandika Indikadahena
Jean-Pierre Poullier
Nathalie Van De Maele

INDEX

Page numbers in **bold type** indicate main discussions.

- Abortion 63
- Absolute risk 36
 - approach 105, 117
- Abuse (*see also* Childhood sexual abuse) **79–81**
- Acetylsalicylic acid 117
- Addictive substances (*see also* Alcohol consumption; Illicit drug use; Tobacco use) **64–67**
 - behavioural change 103
 - global patterns of risks 86, 87
 - interventions **123–127**, 134
- Adolescents
 - interpersonal violence 80
 - protective factors 13
- Adverse events, medical 79
- Advertising, tobacco 125
- Africa (AFR)
 - abuse and violence 80
 - avoidable burden estimates 90
 - childhood and maternal undernutrition 53, 54, 55–56
 - cost-effective interventions 131, 132–133, 136–137
 - diet-related risk factors 60
 - environmental risks 68, 70
 - HIV/AIDS xv, 62, 63
 - impact of shifting poverty distributions 51–52
 - improved water supply/sanitation 128
 - indoor air pollution 50
 - joint effects of major risks 86
 - leading selected risk factors 162
 - occupational risks 74
 - sexual and reproductive health 62, 63
 - tuberculosis 77
 - unsafe health care practices 79
- Age groups 19
- AIDS, *see* HIV/AIDS
- Airborne particulates, work-related 73, **75–76**
- Air pollution
 - ambient, prioritizing 150
 - indoor, *see* Indoor air pollution
 - particulate 68–69
 - urban 67, **68–69**, 72–73
- Alcohol consumption xvi, 6, 64, **65–66**
 - association with poverty 50–51
 - avoidable burden estimates 90–91, 92
 - changing patterns 4–5
 - disease burden 65, 66
 - global patterns 83, 84
 - impact of shifting poverty distributions 51–52
 - population-based strategy 147
 - risk reversibility 23
 - role of government/legislation 105
- Alcohol dependence 65, 81
- Alma-Ata Declaration (1978) 109
- American Cancer Society 23, 126
- Americas (AMR)
 - abuse and violence 80, 81
 - addictive substances 66, 67
 - cost-effective interventions 131, 136–137, 138–139
 - diet-related risk factors 59, 60
 - environmental risks 68, 70
 - leading selected risk factors 162–163
 - occupational risks 74, 76
 - sexual and reproductive health 63
 - smoking 22
- Amphetamine use 66–67
- Anaemia, iron deficiency 54, 111
- Anthropological research 37, 38
- Antihypertensive drug therapy 115
- Antioxidants 60
- Antiretroviral therapy (ARV) 121–122, 123
- Anti-smoking groups 41
- Argentina, men's sexual behaviour 35
- Asbestos 75–76
- Aspirin 117
- Assessment, risk, *see* Risk assessment
- Asthma, occupational 76
- Atenolol 115, 117
- Atherosclerosis 58
- Attributable burden 17–18, 19
 - business as usual trends 89–90
 - data inputs for estimating 19, 20, 22
 - definition 11
 - estimation 21
 - policy use 88
 - statistics *Annex Tables 8–13*
- Australia
 - health care risks 79
 - nutrition campaign 118
 - tobacco control 125
- Autonomy 153
- Avoidable burden 17–18, 19
 - data inputs for estimating 19, 20, 22
 - definition 11, 23, 89
 - estimates **88–92**
 - estimation 23
- Back pain, low 76, 129
 - interventions 130
- Bangladesh, child health services 114
- Basic indicators *Annex Table 1*
- Behavioural change **103–104**

- lifestyles approach 30, 31
- role of government/legislation 105–106
- Beneficence 153
- Benefits, discounting 108
- Beta-blockers 115
- Bill and Melinda Gates Foundation 157
- Binge drinking 65
- Biological gradient, in assessing causation 21
- Birth weight, low 15
- Blindness 55
- Blood pressure 57
 - associations with disease 57, 59
 - distributional transitions 12
 - high, *see* High blood pressure
 - interventions to reduce 106, 114, **115–116**
 - combined with other interventions 116–118
 - population-based approach 16, 105
 - population distributions 17, 105, 147, 148
 - reversibility of risk 23
- Body mass index (BMI) 60
 - disease associations 59
 - high, *see* Obesity; Overweight
 - population distributions 17
- Bolivia, men's sexual behaviour 35
- Bone mineral density 59
- Bovine spongiform encephalopathy (BSE) 40, 152, 154
- Bovine Spongiform Encephalopathy (BSE) Inquiry 40
- Brazil
 - breastfeeding 56
 - child health services 114
 - tobacco control 125
- Breast cancer 61, 78
- Breastfeeding
 - “exclusive” 56
 - interventions 109, 110
 - lack of 56
 - association with poverty 50
 - disease burden 56
 - recommendations 56
- BSE, *see* Bovine spongiform encephalopathy
- Buildings 70
- Burden of disease, *see* Disease burden
- Burkina Faso, perceptions of risk 38
- Canada
 - protective psychosocial factors 13
 - tobacco control 125
- Cancer (*see also* Breast cancer; Lung cancer; *other specific types*)
 - fruit and vegetable intake and 60–61, 118
 - indoor air pollution and 70
 - occupational 75–76
 - overweight/obesity and 60
 - physical inactivity and 61
 - special interest groups 41
 - tobacco use and 64
- Cancer Prevention Study 23
- Cannabis 67
- Carcinogens, work-related 73, 75
- Cardiovascular disease (*see also* Coronary heart disease; Stroke)
 - avoidable burden estimates 92
 - combined interventions 106, 114, **116–118**
 - cost-effective interventions 140, 164
 - fruit and vegetable intake and 60–61
 - joint effects of risk factors 24, 85
 - physical inactivity and 61
 - population-based approach 16, 147, 148
 - reversibility of risk 23
 - smoking and 65
 - work-related risks 73, 75
- Case management, pneumonia 113
- Catastrophe, global 33
- Causal chains 13–14
- Causality, assessment 20–21
- Causes
 - multiple, acting together 15, 18
 - proximal and distal 13–15, 148
- Cerebrovascular disease (*see also* Stroke) 57, 58–59
- Chief medical officer 155
- Childhood mortality, reversibility of risk 23
- Childhood sexual abuse (CSA) 79–81
 - prioritizing 150
 - reversibility of risk 23
- Children
 - chronic disease 15
 - combined interventions **113–114**
 - complementary feeding 110
 - cost-effective interventions 137, 163
 - global patterns of risks 84–85, 86, 87
 - GOBI strategy 109
 - individual-based interventions **112–113**
 - integrated management of illness (IMCI) 113, 114
 - lead exposure 71
 - mistreatment 80
 - undernutrition, *see* Undernutrition, childhood and maternal
- Child underweight xiv–xv
 - association with poverty 50, 53
 - avoidable burden estimates 89–90
 - disease burden **52–54**
 - global patterns 83, 84–85
 - interventions 110
- China
 - air pollution 69–70
 - leading selected risk factors 162–163
 - nutritional transition 88
 - occupational risks 76
 - overweight/obesity 60
 - smoking 22, 64
- CHOICE project 101, 106
- Cholesterol 58
 - high xvi, 57, **58–59**
 - avoidable burden estimates 91
 - disease burden 58–59
 - global patterns 83, 84
 - lowering interventions 114, **116**
 - combined with other interventions 106, 116–118
 - population-based approach 17, 104–105, 116
 - population distributions 17, 147, 148
 - reversibility of risk 23
- Chronic disease, childhood 15
- Chronic obstructive pulmonary disease 70, 76
- Cigarette smoking (*see also* Smoking; Tobacco use) 64
- Cigar smoking 64
- Cirrhosis 78
- Climate
 - change 67, **71–72**
 - perceptions of risk 38
- Coal dust exposure 75–76
- Coal mining 34, 75–76
- Cocaine use 66–67
- Colon cancer 61
- Commercial sex workers, *see* Sex workers
- Commission on Macroeconomics and Health 88, 108

- Communicable diseases, *see* Infectious diseases
- Communication of risk, *see* Risk communication
- Community action xvii, 167
- Competing risks 25
- Complementary feeding 110
with growth monitoring and promotion 110
- Condoms
for HIV/AIDS prevention 119, 120, 121, 122
men's perceptions of risk and 35
social marketing 119
- Confidence intervals 24
- Conflicts of interest 154
- Consistency of causal associations 21
- Consumption, changing patterns 4–5
- Contraception, lack of 62, 63
- Controversies
fresh 152
methods of generating 40
persistent 152
- Cooking, with solid fuels 69–70
- Coronary heart disease (CHD, ischaemic heart disease)
alcohol consumption and 66
continuous risk factor associations 59
environmental tobacco smoke and 66
fruit and vegetable intake and 60–61
joint effects of risk factors 24
population-based strategies 148
risk factors 57, 58–59, 60
work-related stress and 75
- Corporate businesses 31, 39, 40–41
- Cost-effectiveness, interventions 131–137, 153–154
- Cost-effectiveness analysis 101–103
methods 107
need for 92
recommendations xvii, 167
technical considerations 106–108
- Cost-effectiveness ratio (CER) 136–137
- Costs
discounting 107–108
measuring 106, 107
- Counter-advertising, tobacco 125–126
- Counterfactuals
in assessing interventions 102
choosing 22
in risk assessment 12, 15
- Cretinism, endemic 54
- Cuba, men's sexual behaviour 35
- Cultural context
behavioural change 104
perceptions of risk 31, 32, 36–37
- DALY (disability-adjusted life year) 12
by cause, sex and mortality stratum *Annex Table 3*
global patterns of attributable 87
as measure of effectiveness 106–107, 108
- Data (*see also* Evidence)
collection needs 155
extrapolations 17, 22
indirect risk estimation 16–17
internal consistency 16
- Death, as measure of risk 34
- Deaths by cause, sex and mortality stratum *Annex Table 2*
- Dehydration 112–113
- Demographic transition 4
- Dengue fever 72
- Denmark
health care risks 79
road traffic injuries 72
- Depression 81
- Developed countries, *see* Industrialized countries
- Developing countries
addictive substances 64, 66
antiretroviral therapy (ARV) 123
environmental risks 71, 72
health care risks 79
high mortality 81, 82–84
low mortality 81, 83, 84
major disease burden *Annex Tables 14–15*
occupational risks 74, 75
overweight/obesity xvi, 60
patterns of risks 81–85
perceptions of risks 37–38
road traffic injuries 129
top 10 selected risk factors xiii–xiv, 102, 162–163
transferability of research findings to 43
unsafe health care practices 78–79
- Diabetes mellitus
alcohol consumption and 66
body mass index and 59
special interest groups 41
type 2, risk factors 60, 61
- Diarrhoeal disease
climate change and 72
joint effects of multiple risks 24
oral rehydration therapy 112–113
undernutrition and 53, 55–56
unsafe water and sanitation and 68
- Diet, changing patterns 5, 88
- Diet-related risks 6, 57–61, 85
global patterns 86, 87
healthy risk factor transition 88
interventions 135
- Disability-adjusted life year, *see* DALY
- Disadvantage, *see* Socioeconomic disadvantage
- Discounting 107–108
costs 107–108
the future 104
- Disease burden (*see also* Attributable burden; Avoidable burden) 20
attributable to selected risk factors 52–81
estimates 11, 22
major, statistics *Annex Tables 14–16*
projected 161
risk factor relationships 20, 22
- Disinfection at point of use (of water) 127, 129, 140, 163
- Distal risks 13–15, 148
- Distributions, risk factor 12
shifting 147, 148
transitions 12, 88–89
- Diuretics, thiazide 115, 117
- Dollars
international (I\$) 106, 107
US 106, 107
- Donor agencies 42
- Dose–response assessment 10
- Dose–response curves 21
- Double burden 5, 6
- Dread, hazards for 32–33
- Drug abuse, *see* Illicit drug use
- Drug treatment 115, 116, 117

- Eastern Mediterranean Region (EMR)
 - abuse and violence 80
 - addictive substances 66
 - childhood and maternal undernutrition 54, 55–56
 - diet-related risk factors 60
 - environmental risks 68, 70
 - improved water supply/sanitation 128
 - occupational risks 74
 - sexual and reproductive health 63
 - unsafe health care practices 78–79
- Economic context, perceptions of risk 32, 36–37
- Economic development, promoting sustainable 165
- Ecstasy 66–67
- Education, women 6
- Effectiveness
 - discounting 107–108
 - measuring 106–107
- Engineering solutions 103, 130
- Environmental risks 67–73
 - assessment 10
 - global patterns of risks 86, 87
 - interventions 127–129
 - prioritizing 150
 - safety standards 30
- Environmental tobacco smoke (ETS) 66
- Epidemiological transition 82, 84
- Equitable risks, acceptability 33
- Ergonomic stressors, work-related 73, 76, 129
 - interventions 130
- Ethical principles 153–154
- Ethics
 - medical 153
 - risk prevention 153–154
- Europe (EUR)
 - abuse and violence 80
 - addictive substances 65, 66, 67
 - breastfeeding 56
 - diet-related risk factors 58, 59, 60
 - environmental risks 68, 69, 72
 - joint effects of major risks 86–87
 - leading selected risk factors 163
 - occupational risks 74
 - sexual and reproductive health 62, 63
 - smoking 22
 - tuberculosis 77
- Evidence (*see also* Data; Information on risks)
 - base, scientific 4, 155–156
 - for evaluating interventions 101–103
 - experimental, causal associations 21
 - using best available 16–17
- Experience, learning from 32
- Experimental evidence, causal associations 21
- Experts (*see also* Scientists)
 - conflicts of interest 154
 - perceptions of risk 43
 - risk communications 155
- Exposure
 - assessment 10
 - minimum acceptable levels 30
 - population distributions 17
 - theoretical minimum 12, 22
- Extrapolations 17, 22
- Falls, work-related 74
- Family planning associations 41
- Fats, saturated 58
- Fetal programming 15
- Finland
 - cardiovascular disease prevention 114
 - occupational risks 75
 - tobacco control 125
- Flour, iron fortification 110, 111
- Folate, maternal plasma 59
- Folic acid fortification 110
- Food(s) (*see also* Diet-related risks; Nutrition)
 - consumption, changing patterns 4–5
 - genetically modified 33, 39
 - iron fortification 110, 111, 113
 - overconsumption 57–61
 - processed (or “fast”) 5
 - reducing salt content xvii, 115, 140
 - vitamin A fortification 111–112
 - zinc fortification 112, 113
- Food and Drug Administration (FDA) 30
- Food industry 115
- Fossil fuels 68, 71
- Framework Convention on Tobacco Control (FCTC) 6, 41, 157
- Framingham Offspring Study 24
- Framing risks to health 36
- Fruit and vegetable intake xvi, 59, 60
 - global patterns 83, 84
 - interventions to increase 118
 - low 57, 60–61
- Fuels
 - fossil 68, 71
 - solid, indoor smoke from, *see* Indoor air pollution
- Future
 - discounting the 104
 - generations, risks to 33
- Gasoline, leaded 71
- Gender, *see* Sex
- Genetically modified foods 33, 39
- Genetics 77, 78
- Genetic screening 103
- Genocide 80
- G-formula 24
- Global Alliance for Vaccines and Immunization (GAVI) 157
- Global burden of disease study 11, 22
- Globalization 5, 6
- Global patterns of risks 81–85
- Global Water Supply and Sanitation Assessment 2000 68
- GOALS model 122
- GOBI strategy 109
- Governments
 - handling conflicts 31
 - interventions 103, 105–106, 140
 - legislation, *see* Legislation
 - recommended actions xvii, 166–167
 - reducing salt intake 115–116, 140
 - regulatory controls 30, 40–41
 - responsibility 3–4, 165–166
 - risk assessment 11–12
 - risk communications 154–155
 - stewardship function 10, 166
 - tobacco control 105, 106, 123–127, 140
- Greenhouse gases 71
- Growth monitoring 109, 110
- Haemophilus influenzae type B 157
- Hazard
 - definition 11

- dread and risk 32–33
- identification 10
- Health for All Declaration (Alma-Ata 1978) 109
- Health beliefs model 31
- Health care practices, unsafe **78–79, 130–131**
- Health care workers, sharps injuries 73, 74
- Health education
 - in cardiovascular disease prevention 116
 - to prevent unsafe sex 120
 - to reduce cholesterol 116
- Health indicators, basic *Annex Table 1*
- Health promotion
 - campaigns 103
 - lifestyles approach 30, 31
 - tobacco use 125
- Health and Safety Executive (HSE) 30
- Health systems
 - definition 103
 - goals 102, 131
 - influence on behaviour 104
 - risks 79
- Hearing loss, noise-induced 76–77
- Hepatitis B
 - immunization 157
 - occupational risks 73, 74
 - unsafe health care practices and 78–79
- Hepatitis C
 - occupational risks 74
 - unsafe health care practices and 78–79
- Heroin use 66–67
- Heuristics 32
- Hidden risks 152
- High blood pressure *xvi, 57–58*
 - avoidable burden estimates 91
 - causes 57
 - disease burden 57–58
 - drug treatment 115
 - global patterns 83, 84
 - interventions, *see* Blood pressure, interventions to reduce
 - population-based approach 16, 17
- Highly uncertain risks **151–153**
- High-risk individuals
 - assessing 15
 - health promotion 30
 - interventions targeting 16, 103
 - cardiovascular disease prevention 116, 117
 - cost-effectiveness analysis 101
 - versus population approaches **104–105, 147**
- Hip fractures 59
- HIV/AIDS *xv*
 - antiretroviral therapy (ARV) 121–122, 123
 - burden attributed to unsafe sex 62–63
 - cost-effective interventions 137–140, 163–164
 - health beliefs model 31
 - interventions **118–123**
 - maternal to child transmission (MTCT) 121, 122, 123
 - occupational risks 74
 - perceptions of risk 35, 38
 - reducing 165
 - special interest groups 41
 - tuberculosis coinfection 77
 - unsafe health care practices and 78–79
 - voluntary counselling and testing (VCT) 119, 120, 122–123
- Homicide 80
- Homosexual sex 121, 122, 123
- Hospitals, risks in 79
- Housing 70
- Hunger, alleviating 165
- Hydrochlorothiazide 115
- Hygiene, unsafe, *see* Unsafe water, sanitation and hygiene
- Hypercholesterolaemia, *see* Cholesterol, high
- Hypertension, *see* High blood pressure
- Illicit drug use **64, 66–67**
 - disease burden 65, 67
 - global patterns 83, 84
 - reversibility of risk 23
- Immunizations, childhood 109, 157
- India
 - air pollution 69–70
 - nutritional transition 88
 - smoking 64
- Individuals
 - high-risk, *see* High-risk individuals
 - responsibility for own risks 30
 - understanding of risk 32
- Indoor air laws 124–125
- Indoor air pollution *xv, 67*
 - association with poverty 50
 - global patterns 83, 84
 - impact of shifting poverty distributions 51
- Indoor environmental risks 70
- Industrialized countries *xvi*
 - environmental risks 71, 72
 - illicit drug use 67
 - major disease burden *Annex Table 16*
 - occupational risks 76
 - patterns of risks **81–85**
 - tobacco use 64
 - top 10 selected risk factors *xiv, 102, 162, 163*
- Inequality, high levels 80
- Inequities, reducing 165
- Infectious diseases 4, 5
 - bloodborne 78–79
 - child underweight and 53
 - joint effects of risk factors 85
 - perceptions of risks 37–38
 - unsafe water, sanitation and hygiene and 68
- Information dissemination, tobacco risks 125–126
- Information on risks (*see also* Data; Evidence)
 - communication, *see* Risk communication
 - distortions by special interest groups 40
 - framing (presentation) 36
 - need for 9–10
- Injecting drug users 67, 120
- Injections, medical
 - increasing safety 130–131, 135, 150
 - overuse 78–79, 130–131
 - unsafe 78–79, 130–131
- Injuries (*see also* Road traffic injuries)
 - burden, *see* Disease burden
 - reversibility of risk 23
 - self-inflicted 81
 - work-related risks 73, **74–75**
- Insecticide-treated nets 104
- Integrated management of childhood illness (IMCI) 113, 114
- Intelligence 54, 71
- Intergovernmental Panel on Climate Change (IPCC) 71–72
- Internal consistency 16
- International action
 - examples of successful 157
 - highly uncertain risks 152–153

- need for 6, 156–157
- prioritizing risk factors for prevention 150
- recommendations xvii, 167
- International dollars (I\$) 106, 107
- International organizations 41–42
- International Planned Parenthood Federation (IPPF) 41
- Internet 41
- Intersectoral collaboration xvii, 167
- Interventions (*see also* Prevention) 101–140
 - behavioural 103–104
 - categories 103–106
 - choosing 108–131
 - combinations 106, 131–137
 - cost-effective 131–137, 153–154
 - cost-effectiveness analysis, *see* Cost-effectiveness analysis
 - definition xiv, 3
 - evaluation methods 101–103
 - individual- versus population-based 104–105
 - perceived risks 33
 - policy implications 137–140
 - research needs 156
 - role of government/legislation 105–106
- Intoxication, alcohol 65
- Iodine deficiency xv, 54
 - disorders 54
- Iron
 - deficiency xv, 52, 54
 - anaemia 54, 111
 - disease burden 52, 53, 54
 - global patterns 83, 84
 - interventions 110–111, 135
 - fortification 110, 111, 113
 - supplementation 110–111
- Ischaemic heart disease, *see* Coronary heart disease
- Israel, protective psychosocial factors 13
- Japan, genetic-based interventions 79
- Justice 153
 - distributive 153
- Korea, Republic of, nutritional transition 88
- Labels, health warning 125–126
- Lead exposure 67, 68–69, 70–71
 - disease burden 71
 - prioritizing 150
- Legislation
 - emerging need 31
 - to reduce salt intake 115
 - role in risk reduction 105–106
 - tobacco control 123–125
- Leukaemia 75
- Life-course approach 15
- Life expectancy 4
 - effects of major risks 86–87
 - healthy (HALE) *Annex Table 4*
 - as outcome measure 34
 - poverty and 87–88
 - projected gains 90, 161
- Lifestyles approach, health promotion 30, 31
- Liver cancer 78
- Lovastatin 116, 117
- Low birth weight 15
- Low income countries 5, 6
 - perceptions of risks 37–38
 - prioritizing risk factors for prevention 150
- Lung cancer
 - air pollution and 68–69, 70
 - occupational risks 75–76
 - smoking and 64, 66
- Malaria 77
 - perceptions of risk 38
 - prevention 104
 - risk factors 53, 55–56, 72
- Malnutrition (*see also* Undernutrition, childhood and maternal)
 - alleviating 165
 - protein–energy 51
- Maternal to child transmission (MTCT), HIV/AIDS 121, 122, 123
- Maternal disease 63
- Maternal mortality 54
- Maternal undernutrition, *see* Undernutrition, childhood and maternal
- Measles 53
- Media, mass 10
 - health education via 116, 120
 - influence on risk perceptions 42–43
- Medical errors 79
- Medicines, prescribed 33
- Melanoma, prevention 16
- Men
 - homosexual sex 121, 122, 123
 - perceptions of risk 35
- Mental disorders 80–81
- Mental retardation 54
- Microlevel studies, risk perceptions 37
- Middle income countries 5, 6
 - perceptions of risks 37–38
 - prioritizing risk factors for prevention 150
- Millennium development goals 127, 128
- Mortality
 - global patterns of attributable 86
 - joint effects of risk factors 86
 - as measure of risk 34
- Mosquito bites, prevention 104
- Motor cycle helmets 72, 129
- Motor vehicle injuries, *see* Road traffic injuries
- Multicausality 15, 18
- National Health Accounts indicators *Annex Table 5*
- National level
 - management of highly uncertain risks 152–153
 - prioritizing risk factors for prevention 150
- Neighbourhoods, organization 70
- Nets, insecticide-treated 104
- Neural tube defects 59
- Neurodevelopment 56
- Nevirapine 121
- New technologies, risk communication 39
- New Zealand, tobacco control 125
- Nicotine replacement therapy (NRT) 126, 127
- Noise, work-related 73, 76–77
- Nongovernmental organizations 42
- Non-maleficence 153
- Nosocomial infections 78
- Nuclear power 31, 32, 33, 43
- Nutrition (*see also* Diet-related risks; Undernutrition, childhood and maternal)
 - campaigns, national 118
 - key role 85
- Nutritional transition 88

- Obesity (*see also* Overweight) xiv, xv, xvi, 5, **60**
 definition 60
 dietary change and 88
 disease burden 60
 population-based approach 17
 progression with economic development 51
 reversibility of risk 23
- Objectivity, in risk assessment 30
- Occupational risks **73–77**
 global patterns of risks 86, 87
 interventions **129, 130**
 prioritizing 150
- Opioid use, illicit 66–67
- Oral cancer 64
- Oral rehydration therapy 109, 112–113
- Osteoarthritis 60
- Outcome measures 12, 34
- Overweight (*see also* Obesity) xiv, xv, 57, **60**
 definition 60
 dietary change and 88
 disease burden 58, 60
 global patterns 83, 84
 impact of shifting poverty distributions 51–52
- Ozone 68–69
- Panama, alcohol consumption 51
- Panic disorders 81
- Peer outreach
 men who have sex with men 121, 122
 sex workers and clients 119
- Perceived risk, *see* Risk perceptions
- Percentages 36
- Perinatal mortality 54
- Peru
 child health services 114
 men's sexual behaviour 35
- Pesticides 31, 32, 33
- Petrol, leaded 71
- Pharmaceutical companies 41
- Pharmacogenetics 78
- Phenylketonuria 78
- Physical inactivity xvi, 5, 57, **61**
 global patterns 83, 84
 interventions 118, 135
 reversibility of risk 23
- Phytates, dietary 55
- Pipe smoking 64
- Plausibility, causal associations 21
- Pneumoconiosis 76
- Pneumonia (*see also* Respiratory tract infections, lower)
 case management 113
 child underweight and 53
- Policy
 development 101–103
 implications **137–140**
 recommendations xvii, 166–167
 risk factors for prevention 150
 risk prevention strategies 147–149
- Politicians 31, 155
- Population
 distributions of exposure 15, 17
 mass movements 5
- Population attributable fractions *Annex Table 7*
- Population attributable risk 11, 19
- Population-based interventions 16, 103, 164–165
 cardiovascular disease prevention 116–118
 cost-effectiveness analysis 101
 perceived risks 33
 versus individual-based approaches **104–105, 147**
- Post-traumatic stress disorder 80–81
- Potential impact fractions (PIF) (*see also* Attributable burden; Avoidable burden) 19
 data inputs 19, 20, 22
- Poverty 6, **49–52**
 child underweight and xiv–xv, 50, 53
 impact of shifting distributions 51–52
 life expectancy and 87–88
 rates 50
 reducing 165
 risk factor levels and 50–51
- Precautionary principle 39, 151
- Precipitation, changing patterns 71
- Pregnancy
 fetal programming 15
 HIV prophylaxis 121
 iron supplementation 110–111
 maternal smoking 66
 men's perceptions of risk 35
 night blindness 55
 unintended 63
- Prevalence
 in attributable burden calculation 21
 of risk 11
- Prevention 9, **147–157**
 ethical considerations 153–154
 implementing 149
 influence of risk perceptions 43
 need to focus on **161–162**
 primary 148–149
 prioritizing risk factors 150
 prioritizing strategies 147–149
 recommendations xvii, 166–167
 secondary 148–149
- Prevention paradox 16, 147
- Primary health care 109
 selective 109
- Private for-profit corporations 39, 40
- Programming, fetal 15
- Protective risk factors 13
- Protein–energy malnutrition 51
- Proximal risks 13–15, 148
- Psychometric testing, perceptions of risk 32
- Psychosocial factors, protective 13
- Public
 controversy, generating 40
 perceptions of risk 30, 31, 43
- Public health interest groups 39, 40, 41
- Public health interventions 103
- Public places, smoking bans 124–125, 127
- Purchasing power parity (PPP) 106, 107
- Quantitative (scientific) approach, risk assessment 29, 30, 31
- Rape 80
- Regional level, prioritizing risk factors for prevention 150
- Regulatory controls
 disputes about 40–41
 need for 30
- Relative risk (RR)
 calculations using 19, 21, 22
 definition 11
 versus absolute risk 36

- Renal failure 57
- Reproductive health, *see* Sexual and reproductive health
- Research priorities 9, 155–156, 164
- Respiratory disease, chronic
 indoor air pollution and 70
 occupational risks 76
 tobacco use and 64–65
- Respiratory tract infections, lower (*see also* Pneumonia)
 air pollution and 69, 70
 undernutrition and 53, 55–56
- “Reversibility”, risk 23
- Risk(s) 3–4, 9–25
 characterization 10
 definition xiii, 3, 11
 describing 34
 framing 36
 global patterns 81–85
 hazards for 32–33
 meanings 9, 11, 34
 prevalence 11
 proximal and distal 13–15, 148
 rationale for focusing on 9–10
 “reversibility” 23
 uncertain, *see* Uncertain risks
 understanding 32–33
- Risk analysis (*see also* Risk assessment) 4, 10
 evolution 29–30
 scientific approach 29, 30, 31
- Risk assessment 9–25
 avoidable and attributable burden 17–18
 both certain and probable risks 16–17
 definition xiv, 4, 10–11
 development 10–11, 29–30
 environmental 10
 jointly acting causes 15
 key goals of global 11–18
 methods 18–25
 population-wide and individual risks 15
 protective and hazardous factors 13
 proximal and distal causes 13–15
 scientific evidence base 155–156
 scientific (quantitative) approach 29, 30, 31
 standardized comparisons and outcome measures 12
- Risk communication 6, 38–39, 43
 changing perspective 39
 components 38–39
 framing risk information 36
 guidelines 154–155
 implementing 149
 need to improve 31
 role of governments 154–155
- Risk factors (*see also* specific risk factors)
 choosing and defining 20–21
 continuously associated with disease 59
 disease burden from selected 52–81
 disease burden relationships 20, 22
 distributions, *see* Distributions, risk factor
 global burden of disease study 11
 global patterns 81–85
 healthy transition 88
 interventions targeting multiple 105
 joint effects of multiple 23–24, 85–88
 levels 20
 “business as usual” scenario 23, 89–90
 counterfactual scenario 23
 estimating 22
 relationships to poverty 50–51
 shifting poverty distributions and 51–52
 prevalence by subregion *Annex Table 6*
 prioritizing 150
 protective 13
 proximal and distal 13–15, 148
 top 10 selected xiii–xiv, 102, 162–163
- Risk management (*see also* Prevention) 29–30, 149
 highly uncertain risks 151–153
 scientific approach 31
 scientific evidence base 155–156
- Risk perceptions 3, 29–43
 basis of formation 32–33
 behavioural change and 103–104
 changing 29–30
 in developing countries 37–38
 emerging importance 31
 framing of risk information and 36
 gender differences 35
 importance in risk prevention 43
 mass media and 42–43
 measures of risk and 34
 scientists versus the public 30, 31
 social and cultural influences 36–37
 special interest groups and 39–42
 world views and 35–36
- Risk prevention, *see* Prevention
- Risk reduction strategies (*see also* Interventions) 3–4, 103–106
 behavioural 103–104
 combining 131–137
 individual- versus population-based 104–105
 prioritizing 9–10
 recommendations xvii, 166–167
 role of government/legislation 105–106
- Risk transition xvi, 4–6
- Road traffic injuries 72
 multicausality 18
 prevention 105–106, 129
 work-related 74
- Road traffic-related risks 72–73
- Rose, Geoffrey 16, 17, 164
- Rural Living Science Institute 88
- Rwanda, collective violence 80
- Salt intake, reducing xvii, 115–116, 140
- Sanitation
 improved 103, 127–129
 unsafe, *see* Unsafe water, sanitation and hygiene
- School-based education, AIDS 120, 123
- Scientific approach, risk assessment 29, 30, 31
- Scientific knowledge base 4, 155–156
- Scientists (*see also* Experts)
 perceptions of risk 30, 31, 43
- Screening
 genetic 103
 programmes 33
- Seat belts 104, 129
- Sex (gender)
 DALYs by *Annex Table 3*
 deaths by *Annex Table 2*
 global patterns of risks and 84–85, 86, 87
 risk perceptions and 35
- Sexual abuse, childhood, *see* Childhood sexual abuse
- Sexual behaviour
 men’s 35
 unsafe, *see* Unsafe sex

- Sexually transmitted infections (STI) 62
treatment 121, 122
- Sexual and reproductive health (*see also* Pregnancy; Unsafe sex) 61–63
global patterns of risks 86, 87
interventions 118–123, 135
- Sex workers
interventions 120
outreach peer education programmes 119
- Sharps injuries 73, 74, 78
- Shiftwork 75
- Silica 75–76
- Silicosis 76
- Smoke
environmental tobacco (ETS) 66
indoor, *see* Indoor air pollution
- Smokers, discounting the future 104
- Smoking (*see also* Tobacco use) 64–65
behavioural change 104
impact ratio (SIR) 64, 126
interventions 123–127
passive 64, 66, 124–125
- Social capital 104
- Social context
behavioural change 104
perceptions of risk 31, 32, 36–37
- Social relationships 13
- Socioeconomic disadvantage (*see also* Poverty)
health risks and 49–52
life-course approach 15
- Solvent use 67
- South Africa
alcohol consumption 51
tobacco control 125
- South East Asia Region (SEAR)
abuse and violence 80, 81
addictive substances 65, 66
cardiovascular risk factors 58, 59
childhood and maternal undernutrition 53, 54, 55
environmental risks 68, 69, 70
leading selected risk factors 162
occupational risks 74, 75
sexual and reproductive health 63
unsafe health care practices 78–79
- Special interest groups 31, 39–42
- Sports events, sponsorship 125
- Statins 116
- Stewardship 10, 166
- Stop-TB Partnership 157
- Strength of causal associations 21
- Stress, work-related 73, 75
- Stroke
alcohol consumption and 66
blood pressure and 57, 59
cholesterol and 58
fruit and vegetable intake and 60–61
overweight/obesity and 60
population-based strategies 148
- Subjectivity, risk assessment 30, 34
- Subregions, epidemiological 19, 106
mortality strata 233–235
prevalence of selected risk factors *Annex Table 6*
- Sugar, vitamin A fortification 111–112
- Suicide 80
- Surprises 152
- Sustainable development, promoting 165
- Sweden, tobacco control 125
- Tanzania, child health services 114
- Taxation 106
tobacco 124, 126, 141
- Temporality, causal associations 21
- Terrorism 5, 33
- Thailand
road traffic injuries 72
tobacco control 125
- Theoretical minimum 12, 22
- Thiazide diuretics 115, 117
- Throat cancer 18
- Time gains, improved water supply/sanitation 128
- Time lag
in avoidable burden estimates 23
in risk assessment 18, 19
- Tobacco control xvii, 6, 41
combined with other interventions 106
cost-effectiveness 126–127, 164
programmes 123–126, 134, 157
role of government/legislation 105, 106, 123–127, 140
- Tobacco industry 41
- Tobacco smoke, environmental (ETS) 66
- Tobacco use (*see also* Smoking) xvi, 64–65
association with poverty 50, 51
avoidable burden estimates 91–92
changing patterns 4–5, 84
disease burden 64–65
distributional transitions 12
global patterns 83, 84
impact of shifting poverty distributions 51, 52
interventions, *see* Tobacco control
oral 64–65
reversibility of risk 23
stages of progression 51, 126
- Trade, international 5, 41
- Training, workers 130
- Transport 72–73
- Travel, international 5
- Trust 31, 43, 155
- Tuberculosis (TB) 77, 157
- Uganda
child health services 114
HIV/AIDS prevention 120
- Uncertain risks
assessment and management 151–153
perceptions 32, 33
- Uncertainty
estimates 24–25
in risk assessment 16–17
- Undernutrition, childhood and maternal (*see also* Child underweight) 52–56
global patterns of risks 86, 87
interventions 109–114, 134–135
- Understanding of risk 32–33
- Underweight
child, *see* Child underweight
women 53
- UNICEF 68, 109, 157
- United Kingdom (UK)
air pollution 68
bovine spongiform encephalopathy 40, 154
genetic-based interventions 79
government actions 30
health care risks 79

- overweight/obesity 60
- road traffic injuries 72
- United Nations
 - agencies 42
 - Conference on Environment and Development (1992) 151
 - Drug Control Programme 67
 - Intergovernmental Panel on Climate Change (IPCC) 71–72
- United States (USA)
 - air pollution 68
 - coal mining 34
 - genetic-based interventions 79
 - government actions 30
 - health care risks 79
 - HIV/AIDS prevention 120
 - protective psychosocial factors 13
 - tobacco smoking 66, 124, 126
- Unknown risks 32, 33
- Unsafe health care practices 78–79
- Unsafe sex xv, 61, 62–63
 - association with poverty 50
 - avoidable burden estimates 90, 92
 - disease burden 62–63
 - global patterns 83, 84–85
 - impact of shifting poverty distributions 51, 52
 - interventions 118–123
- Unsafe water, sanitation and hygiene xv, 67, 68
 - association with poverty 50
 - diet-related risk factors 60
 - disease burden 68, 69
 - global patterns 83, 84
 - impact of shifting poverty distributions 51
 - interventions 127–129, 134
- Urban air pollution 67, 68–69, 72–73
- Vaccination programmes 33
- Vegetable intake, *see* Fruit and vegetable intake
- Violence 79–81
 - collective 80
 - domestic 80
 - interpersonal 80
- Visual impairment 55
- Vitamin A
 - deficiency xv, 52, 55
 - disease burden 52, 53, 55
 - global patterns 83, 84
 - interventions 111–112
 - fortification 111–112
 - supplementation 111, 112, 113
- War 80
- Warming, global 20, 71–72
- Warning labels, health 125–126
- Water
 - disinfection at point of use 127, 129, 140, 163
 - improved supply 103, 127–129, 140
 - unsafe, *see* Unsafe water, sanitation and hygiene
- Western Pacific Region (WPR)
 - abuse and violence 80, 81
 - addictive substances 65, 66
 - breastfeeding 56
 - diet-related risk factors 58, 59, 60
 - environmental risks 69, 70
 - joint effects of major risks 86
 - leading selected risk factors 163
 - occupational risks 74, 75
 - sexual and reproductive health 62, 63
 - unsafe health care practices 78–79
- Women (*see also* Pregnancy)
 - contraceptive use 63
 - education 6
 - global patterns of risks 85, 86
 - risk perceptions 35
 - undernutrition, *see* Undernutrition, childhood and maternal
 - violence against 80
- Work-related risks, *see* Occupational risks
- World Bank 157
- World Health Assembly, 1977 109
- World Health Assembly, 2002 6
- World Health Organization (WHO) 42, 150, 156
 - breastfeeding recommendations 56
 - cost-effectiveness analysis methods 101, 106–108
 - Framework Convention for Tobacco Control 6, 41, 157
 - Global Alliance for Vaccines and Immunization (GAVI) 157
 - Global Water Supply and Sanitation Assessment 2000 68
 - Stop-TB Partnership 157
- World Health Report 1999* 4, 5
- World Health Report 2003* 102, 137
- World Trade Organization (WTO) 41
- World views, impact on risk perceptions 35–36
- Young people (*see also* Adolescents; Children)
 - interpersonal violence 80
 - protective factors 13
 - school-based AIDs education 120, 123
- Zinc
 - deficiency xv, 52, 55–56
 - disease burden 52, 55–56
 - global patterns 83, 84
 - interventions 112
 - fortification 112, 113
 - supplementation 112