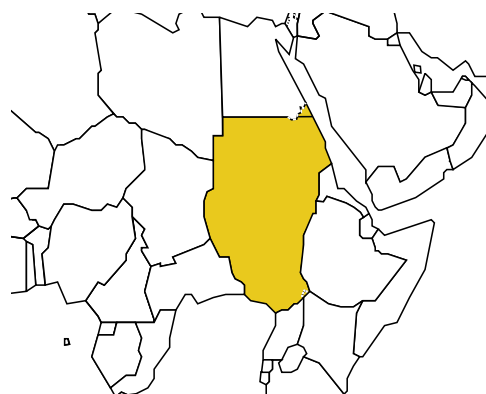


# SUDAN

Population: **38 560 488**

Income group: **Middle**

Gross national income per capita: **\$960**



INSTITUTIONAL FRAMEWORK	
Lead agency	No
Funded in national budget	n/a
National road safety strategy	No (subnational)
Measurable targets	n/a
Funded	n/a

NATIONAL LEGISLATION	
Speed limits set nationally	Yes
Local authorities can set lower limits	Yes
Maximum limit urban roads	50 km/h
Enforcement <sup>a</sup>	0 1 2 3 4 5 6 <b>7</b> 8 9 10
Drink-driving law	Yes
BAC limit – general population	0.0 g/dl <sup>b</sup>
BAC limit – young or novice drivers	0.0 g/dl <sup>b</sup>
Random breath testing and/or police checkpoints	No
Road traffic deaths involving alcohol	—
Enforcement <sup>a</sup>	0 1 2 3 4 5 6 7 8 9 <b>10</b>
Motorcycle helmet law	Yes
Applies to all riders	Yes
Helmet standards mandated	Yes
Helmet wearing rate	—
Enforcement <sup>a</sup>	0 1 2 3 4 5 6 <b>7</b> 8 9 10
Seat-belt law	Yes
Applies to all occupants	No
Seat-belt wearing rate	—
Enforcement <sup>a</sup>	0 1 2 3 4 5 6 <b>7</b> 8 9 10
Child restraints law	No
Enforcement <sup>a</sup>	n/a

<sup>a</sup> Enforcement score represents consensus based on professional opinion of respondents, on a scale of 0 to 10 where 0 is not effective and 10 is highly effective.

<sup>b</sup> Alcohol consumption prohibited by law.

VEHICLE STANDARDS	
Car manufacturers required to adhere to standards on	
Fuel consumption	Yes
Seat-belt installation for all seats	Yes
ROAD SAFETY AUDITS	
Formal audits required for major new road construction projects	Yes
Regular audits of existing road infrastructure	Yes
PROMOTING ALTERNATIVE TRANSPORT	
National policies to promote walking or cycling	No
National policies to promote public transportation	No

POST-CRASH CARE	
Formal, publicly available pre-hospital care system	No
National universal access number	n/a

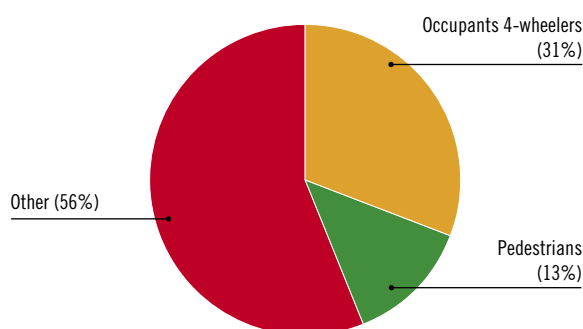
— Data not available.  
n/a Data not required/not applicable.

DATA
Reported road traffic fatalities (2007) <b>2 227<sup>c</sup></b> (76% males, 24% females)
Reported non-fatal road traffic injuries (2007) <b>21 329<sup>d</sup></b>
Costing study available <b>Yes</b> (deaths and injuries)

<sup>c</sup> Police data, defined as doctor report states that death was due to the crash. Data exclude South Sudan states.

<sup>d</sup> Police data, exclude South Sudan states.

## DEATHS BY ROAD USER CATEGORY



## TRENDS IN ROAD TRAFFIC DEATHS



REGISTERED VEHICLES	
<b>1 200 000</b> total (2007)	
Motorcars	<b>64%</b>
Motorized 2- and 3-wheelers	<b>3%</b>
Minibuses, vans, etc. (seating <20)	<b>13%</b>
Trucks	<b>12%</b>
Buses	<b>1%</b>
Other	<b>7%</b>

Data cleared by the Federal Ministry of Health.