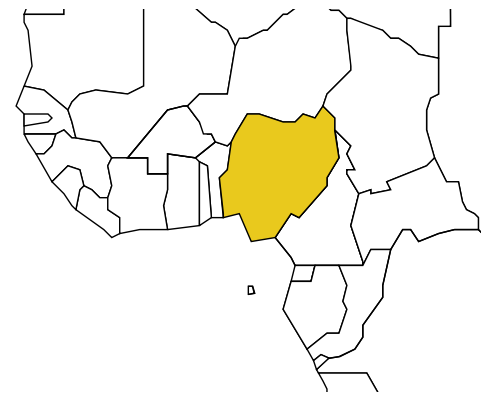


# NIGERIA

Population: 148 092 542

Income group: Low

Gross national income per capita: \$930



INSTITUTIONAL FRAMEWORK	
Lead agency	Federal Road Safety Commission
Funded in national budget	No
National road safety strategy	Multiple
Measurable targets	n/a
Funded	n/a

NATIONAL LEGISLATION	
Speed limits set nationally	Yes
Local authorities can set lower limits	Yes
Maximum limit urban roads	50 km/h
Enforcement <sup>a</sup>	0 1 2 3 4 5 6 7 8 9 10
Drink-driving law	Yes
BAC limit – general population	0.05 g/dl
BAC limit – young or novice drivers	0.05 g/dl
Random breath testing and/or police checkpoints	Yes
Road traffic deaths involving alcohol	<10% <sup>b</sup>
Enforcement <sup>a</sup>	0 1 2 3 4 5 6 7 8 9 10
Motorcycle helmet law	Yes
Applies to all riders	Yes <sup>c</sup>
Helmet standards mandated	Yes
Helmet wearing rate	<5% <sup>b</sup>
Enforcement <sup>a</sup>	0 1 2 3 4 5 6 7 8 9 10
Seat-belt law	Yes
Applies to all occupants	Yes
Seat-belt wearing rate	70% Front <sup>b</sup>
Enforcement <sup>a</sup>	0 1 2 3 4 5 6 7 8 9 10
Child restraints law	No
Enforcement <sup>a</sup>	n/a

<sup>a</sup> Enforcement score represents consensus based on professional opinion of respondents, on a scale of 0 to 10 where 0 is not effective and 10 is highly effective.

<sup>b</sup> Source not specified.

<sup>c</sup> Some exceptions.

VEHICLE STANDARDS	
Car manufacturers required to adhere to standards on	
Fuel consumption	—
Seat-belt installation for all seats	—
ROAD SAFETY AUDITS	
Formal audits required for major new road construction projects	Yes
Regular audits of existing road infrastructure	Yes
PROMOTING ALTERNATIVE TRANSPORT	
National policies to promote walking or cycling	No
National policies to promote public transportation	No

POST-CRASH CARE	
Formal, publicly available pre-hospital care system	Yes
National universal access number	No

— Data not available.  
n/a Data not required/not applicable.

DATA	
Reported road traffic fatalities (2006)	4 673 <sup>d</sup> (66% males, 33% females)
Reported non-fatal road traffic injuries (2007)	17 794 <sup>e</sup>
Costing study available	Yes (deaths and injuries)

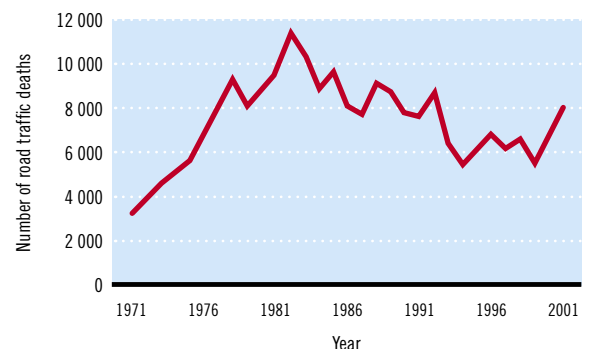
<sup>d</sup> Federal Road Safety Commission data, defined as died within 1 year of the crash.

<sup>e</sup> Federal Road Safety Commission data.

## DEATHS BY ROAD USER CATEGORY



## TRENDS IN ROAD TRAFFIC DEATHS



Source: Country questionnaire

REGISTERED VEHICLES	
7 600 000 total (2007)	
Motorized 4-wheelers	60
Motorized 2-wheelers	40
Trucks	<1%

Data cleared by the Federal Ministry of Health.