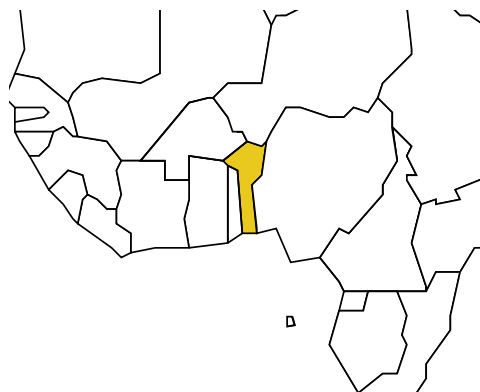


# BENIN

Population: **9 032 787**

Income group: **Low**

Gross national income per capita: **\$570**



| INSTITUTIONAL FRAMEWORK       |                                 |
|-------------------------------|---------------------------------|
| Lead agency                   | National Centre for Road Safety |
| Funded in national budget     | Yes                             |
| National road safety strategy | Multiple                        |
| Measurable targets            | n/a                             |
| Funded                        | n/a                             |

| DATA  |
|---|
| Reported road traffic fatalities (2007)         |
| <b>605<sup>b</sup></b>                          |
| Reported non-fatal road traffic injuries (2007) |
| <b>3 251<sup>c</sup></b>                        |
| Costing study available                         |
| <b>No</b>                                       |

<sup>b</sup> Transport data, defined as died within 7 days of the crash.

<sup>c</sup> Transport data.

| NATIONAL LEGISLATION                            |                               |
|---|-------------------------------|
| Speed limits set nationally                     | Yes                           |
| Local authorities can set lower limits          | No                            |
| Maximum limit urban roads                       | 50 km/h                       |
| Enforcement <sup>a</sup>                        | 0 1 <b>2</b> 3 4 5 6 7 8 9 10 |
| Drink-driving law                               | Yes                           |
| BAC limit – general population                  | None                          |
| BAC limit – young or novice drivers             | None                          |
| Random breath testing and/or police checkpoints | Yes                           |
| Road traffic deaths involving alcohol           | —                             |
| Enforcement <sup>a</sup>                        | 0 1 2 3 4 <b>5</b> 6 7 8 9 10 |
| Motorcycle helmet law                           | Yes                           |
| Applies to all riders                           | Yes                           |
| Helmet standards mandated                       | No                            |
| Helmet wearing rate                             | —                             |
| Enforcement <sup>a</sup>                        | 0 <b>1</b> 2 3 4 5 6 7 8 9 10 |
| Seat-belt law                                   | No (subnational)              |
| Applies to all occupants                        | n/a                           |
| Seat-belt wearing rate                          | —                             |
| Enforcement <sup>a</sup>                        | n/a                           |
| Child restraints law                            | No                            |
| Enforcement <sup>a</sup>                        | n/a                           |

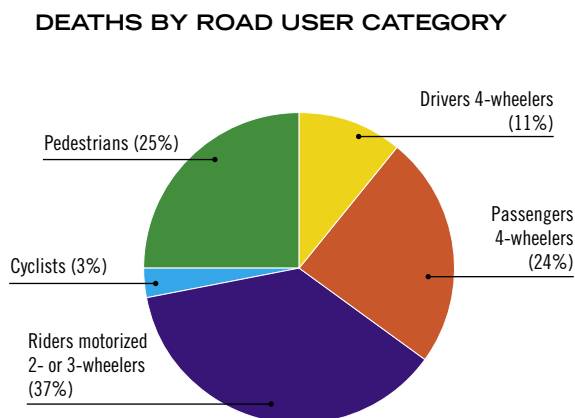
<sup>a</sup> Enforcement score represents consensus based on professional opinion of respondents, on a scale of 0 to 10 where 0 is not effective and 10 is highly effective.

| VEHICLE STANDARDS   |     |
|---|-----|
| No car manufacturers  |     |
| ROAD SAFETY AUDITS  |     |
| Formal audits required for major new road construction projects | No  |
| Regular audits of existing road infrastructure                  | No  |
| PROMOTING ALTERNATIVE TRANSPORT                                 |     |
| National policies to promote walking or cycling                 | No  |
| National policies to promote public transportation              | Yes |

| POST-CRASH CARE                                     |     |
|---|-----|
| Formal, publicly available pre-hospital care system | No  |
| National universal access number                    | n/a |

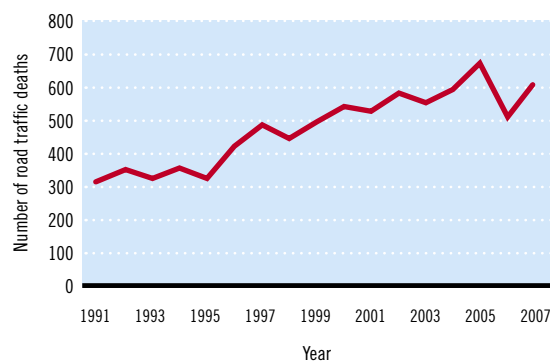
— Data not available.

n/a Data not required/not applicable.



Source: 2007, Centre National de Sécurité Routière

### TRENDS IN ROAD TRAFFIC DEATHS



Source: National Road Safety Centre Database

| REGISTERED VEHICLES                 |     |
|-------------------------------------|-----|
| <b>222 850</b> total (2007)         |     |
| Motorcars                           | 67% |
| Motorized 2- and 3-wheelers         | 7%  |
| Minibuses, vans, etc. (seating <20) | 11% |
| Trucks                              | 5%  |
| Buses                               | <1% |
| Other                               | 10% |

Data cleared by the Ministry of Health.