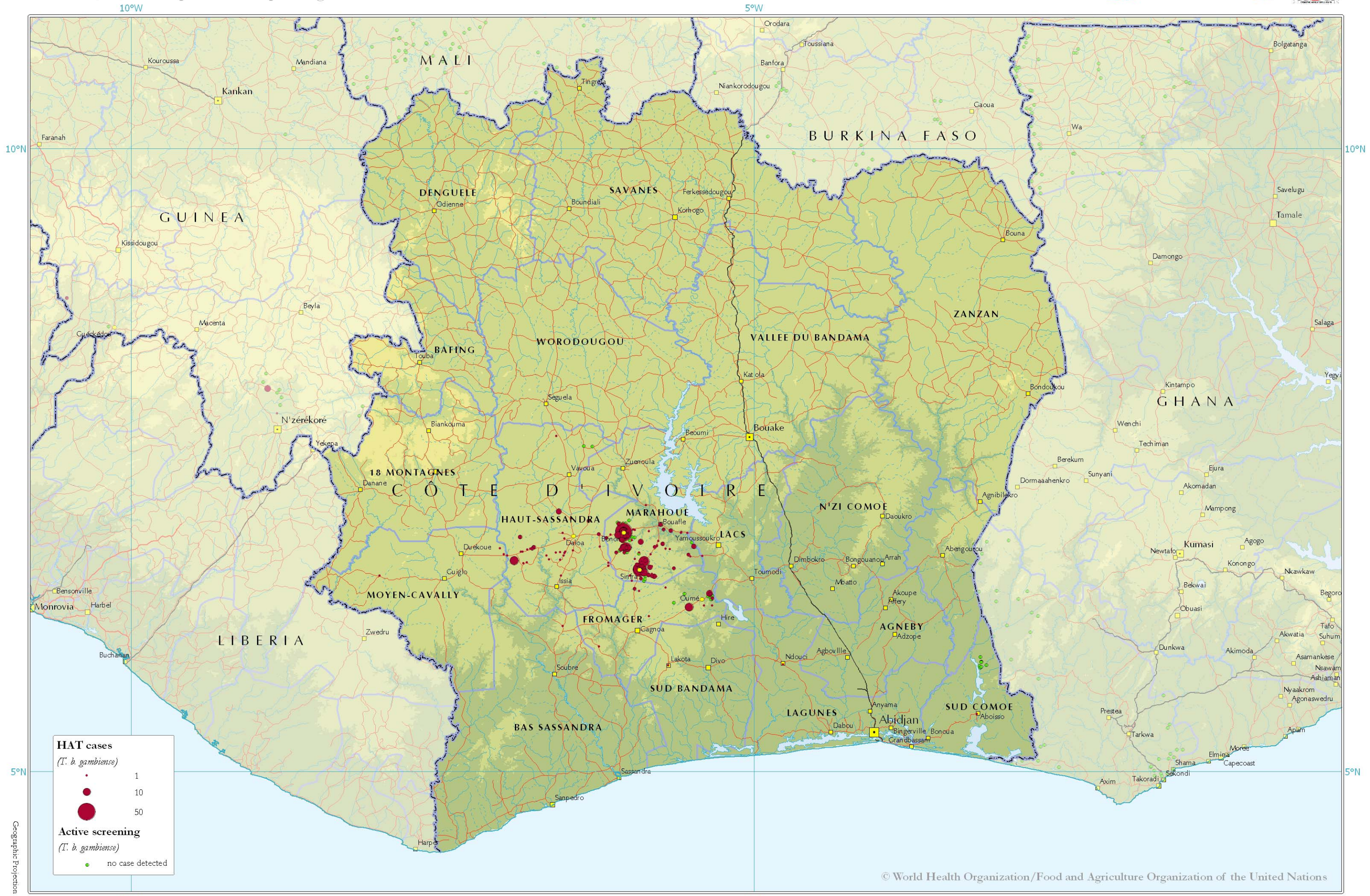


The Atlas of human African trypanosomiasis (2000-2009): Côte d'Ivoire

Version: 1/11/2010. Optimized for printing in A3 format



© World Health Organization/Food and Agriculture Organization of the United Nations

The boundaries and names shown and the designations used on this map do not imply the expression of any opinion whatsoever on the part of WHO and FAO concerning the legal status of any country, territory, city or area or of its authorities, or concerning the delimitation of its frontiers or boundaries. Dotted lines on maps represent approximate border lines for which there may not yet be full agreement.

Citation: Simarro *et al.* (2010). The Atlas of human African trypanosomiasis: a contribution to global mapping of neglected tropical diseases. *Int J Health Geogr*, 9:57

