

**Global Business Plan for  
MDG4 and 5  
Implementation:  
Predictability of funding**

Hassan Mshinda

*2<sup>nd</sup> July 2007*

# Outline

- Aid modalities in Tanzania
- Opportunities for performance based financing

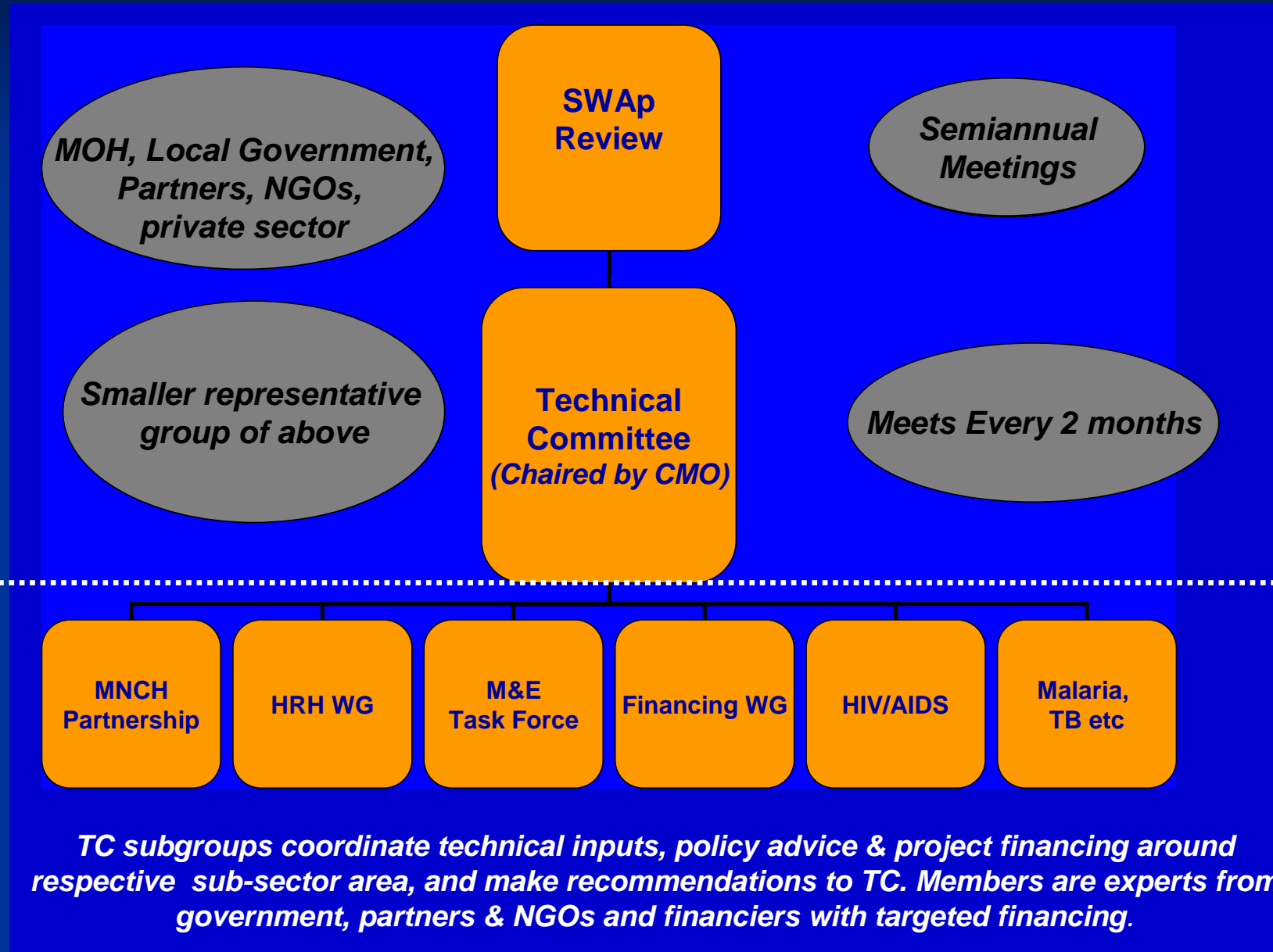
# Aid modalities

- Project
- Basket funding SWAP
- General Budget support
- Global Health Initiatives

# SWAp - Expectations

- Overcome donor fragmentation, verticalisation: single strategy and programme
- Strengthen national systems, ownership, leadership
- Longer-term, predictable
- Focus on the big picture: sector policies, strategies & dialogue

# Sector Policy Dialogue



# Various Modes of Financing Support the SWAp



# Financing of MNCH in Tanzania

**MOHSW MTEF  
(GOT & Basket)**

**CCHPs  
(Block Grants & Basket)**

**Projectized  
financing  
for MNCH**

**MOHSW MNCH  
stewardship  
(policy, strategy,  
regulatory, M&E)**

**CHMTs  
MNCH management,  
supervision, oversight**

**ZTCs**  
•MNCH-related training  
•Supervision

**MNCH Interventions Delivered by**  
•Districts Hospital  
•Health Centre  
•Dispensary

# General Budget Support

- Logical progression from sector funding: support the “meta-strategy”
- Tackle the big systems issues (strategic resource allocation, public sector performance, fin. mgt.) at source
- Circumvent basket management headaches
- Scepticism on actual value-added of sector working

# GBS Assumptions

- The PRS:
  - is real, owned, consistent with domestic policy imperatives
  - drives sector policy, strategy, budget
- No sector-specific issues of consequence
- Domestic accountability drives performance
- GBS policy dialogue a 2-way conversation
- Donors mean what they say
  - Predictability, long-term funding
  - Performance linkage
  - Division of labour, harmonisation, alignment

# Opportunities

- Aid modalities closely integrated with government budget process are most predictable
- Support to one national plan is key and lowers transaction costs
- Interest among development partners and government (Kigali workshop)
- Leverage district basket  
US\$ 5 million + 135million = 140million  
10% payroll cost 9 millions will be devoted to bonuses

# Challenges

- Definition of performance indicators depend on Health Information System

Balance Score Card

Finance

Quality of Care

Coverage

Satisfaction

# Conclusion

- General Budget Support is most predictable modalities followed by Basket funding
- Interest among development partners on performance based financing
- Strengthen health information system
- more evidence is needed
- Improvement of services