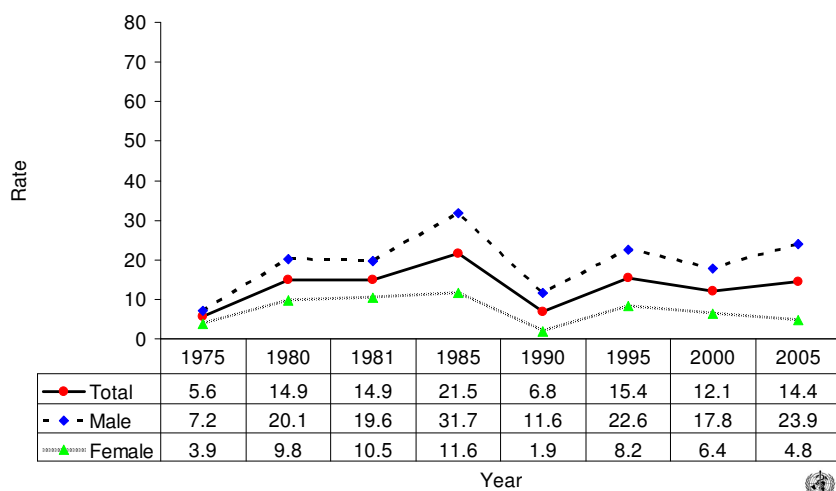
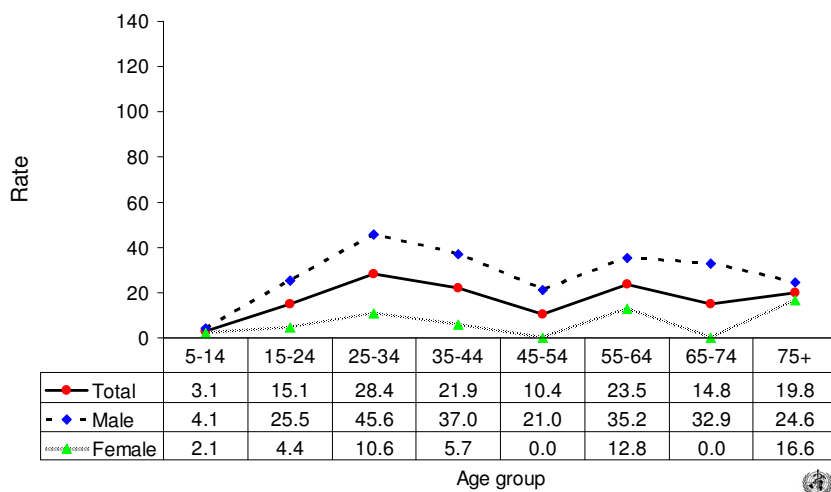


Suicide rates (per 100,000), by gender, Suriname, 1975-2005.



Suicide rates (per 100,000), by gender and age, Suriname, 2005.



Number of suicides by age group and gender. SURINAME, 2005.

Age (years)	5-14	15-24	25-34	35-44	45-54	55-64	65-74	75+	All
Males	2	12	18	14	5	5	3	1	60
Females	1	2	4	2	0	2	0	1	12
Total	3	14	22	16	5	7	3	2	72