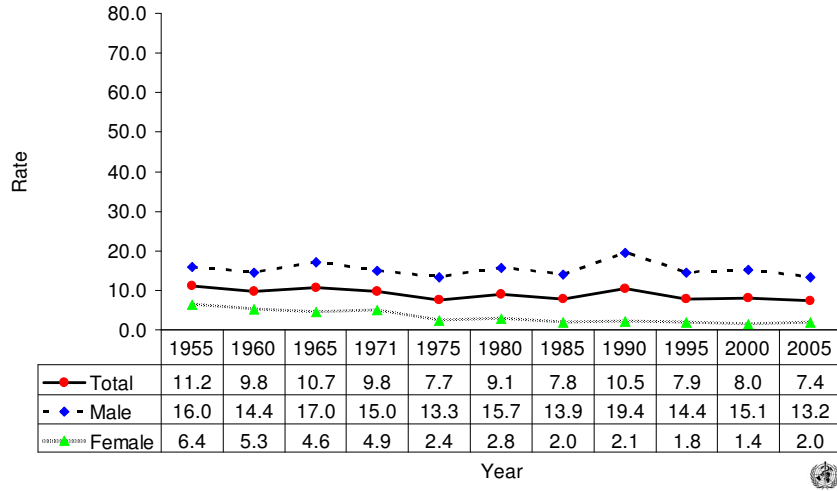
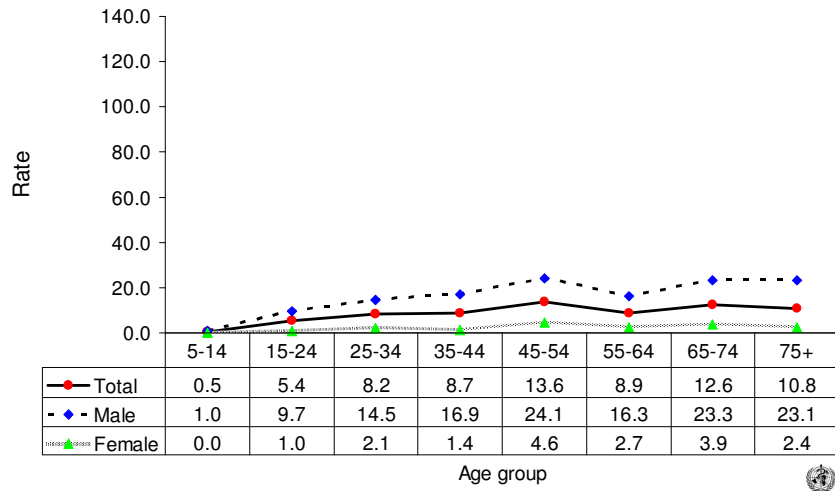


Suicide rates (per 100,000), by gender, Puerto Rico, 1955-2005.



Suicide rates (per 100,000), by gender and age, Puerto Rico, 2005.



Number of suicides by age group and gender. PUERTO RICO, 2005.

Age (years)	5-14	15-24	25-34	35-44	45-54	55-64	65-74	75+	All
Males	3	29	39	42	54	31	29	20	248
Females	0	3	6	4	12	6	6	3	40
Total	3	32	45	46	66	37	35	23	288