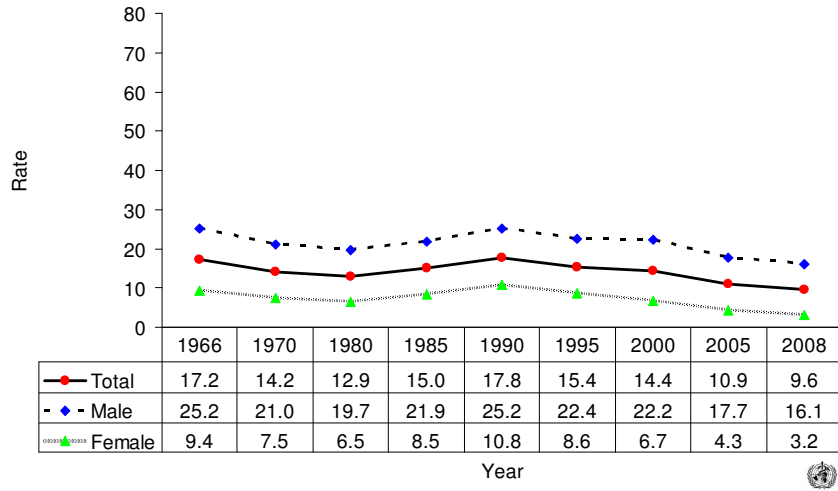
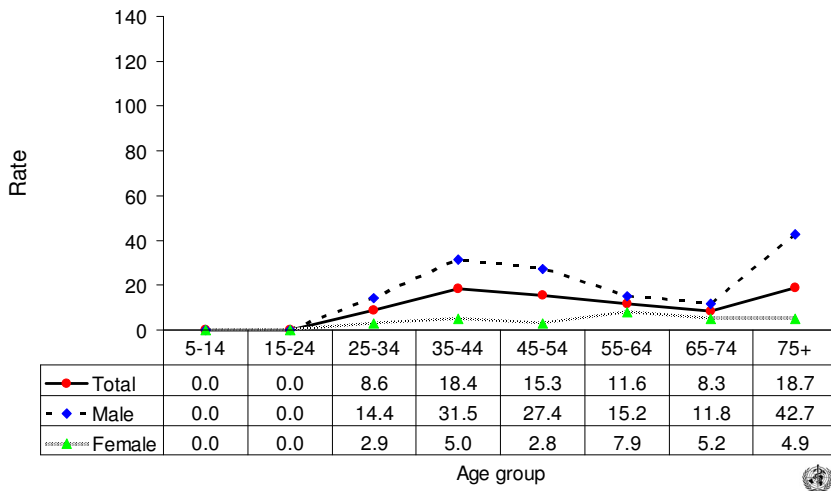


Suicide rates (per 100,000), by gender, Luxembourg, 1966-2008.



Suicide rates (per 100,000), by gender and age, Luxembourg, 2008.



Number of suicides by age group and gender. LUXEMBOURG, 2008.

Age (years)	5-14	15-24	25-34	35-44	45-54	55-64	65-74	75+	All
Males	0	0	5	13	10	4	2	5	39
Females	0	0	1	2	1	2	1	1	8
Total	0	0	6	15	11	6	3	6	47