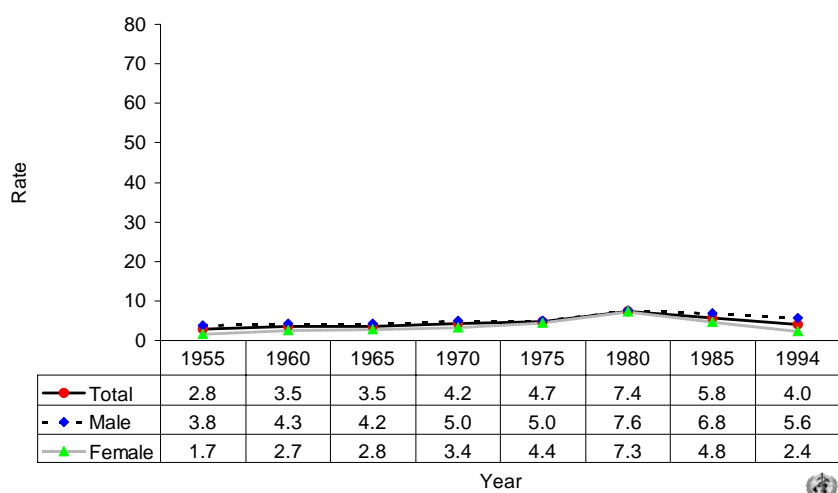
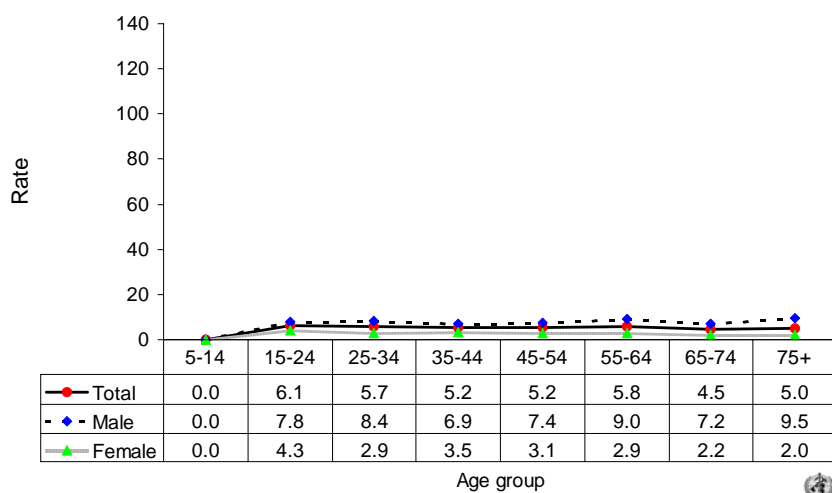


Suicide rates (per 100,000), by gender, Thailand, 1955-1994.



Suicide rates (per 100,000), by gender and age, Thailand, 1994.



Number of suicides by age group and gender. THAILAND, 1994.

Age (years)	5-14	15-24	25-34	35-44	45-54	55-64	65-74	75+	All
Males	1	483	457	261	170	143	62	35	1612
Females	1	255	152	132	72	50	22	11	695
Total	2	738	609	393	242	193	84	46	2307