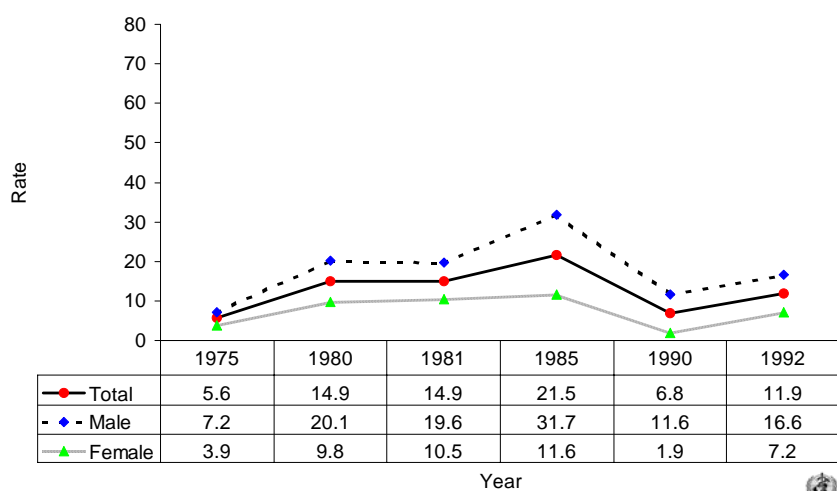
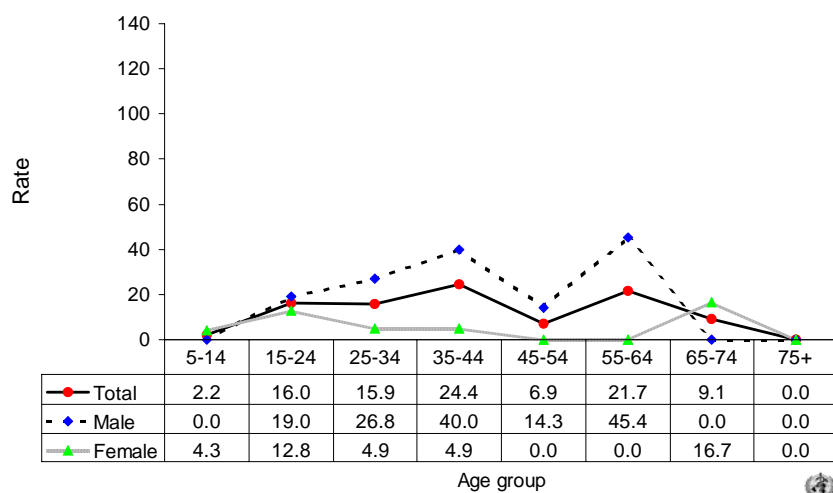


Suicide rates (per 100,000), by gender, Suriname, 1975-1992.



Suicide rates (per 100,000), by gender and age, Suriname, 1992.



Number of suicides by age group and gender. SURINAME, 1992.

Age (years)	5-14	15-24	25-34	35-44	45-54	55-64	65-74	75+	All
Males	0	9	11	8	2	5	0	0	36
Females	2	6	2	2	0	0	1	0	16
Total	2	15	13	10	2	5	1	0	52