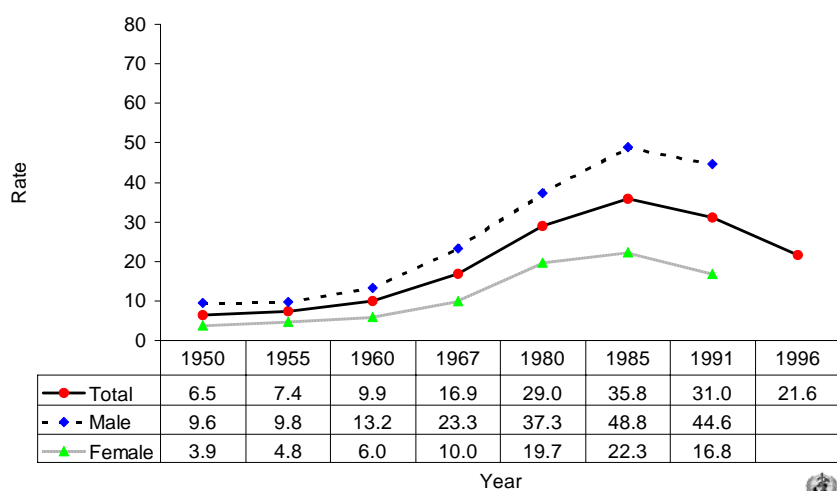
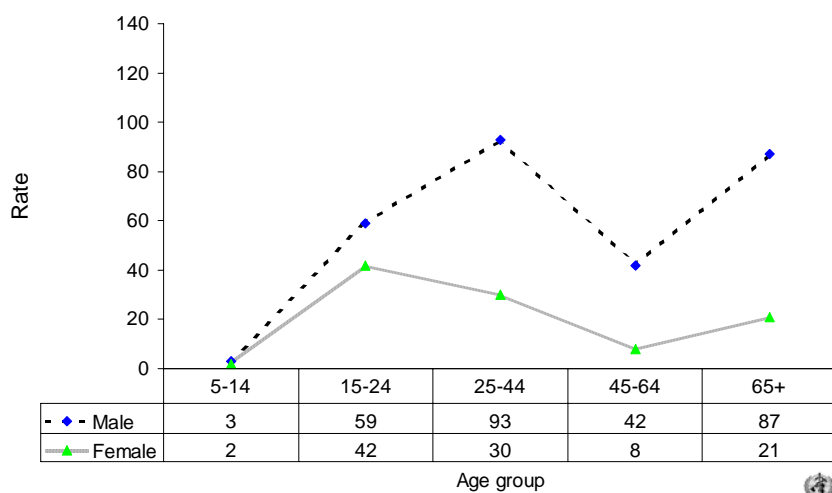


Suicide rates (per 100,000), by gender, Sri Lanka, 1950-1996.



Suicide rates (per 100,000), by gender and age, Sri Lanka, 1991

(provisional figures).



Number of suicides by age group and gender. SRI LANKA, 1986.

Age (years)	5-14	15-24	25-34	35-44	45-54	55-64	65-74	75+	All
Males	48	1304	1045	509	342	262	199	145	3855
Females	35	804	365	123	70	41	31	22	1492
Total	83	2108	1410	632	412	303	230	167	5347