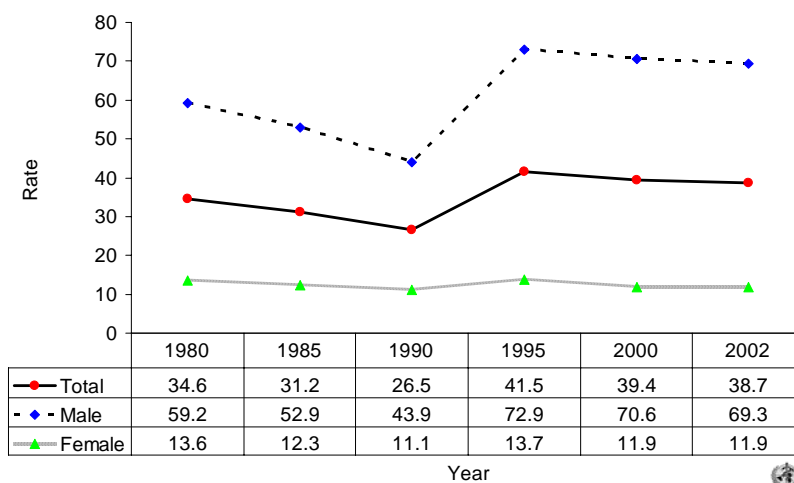
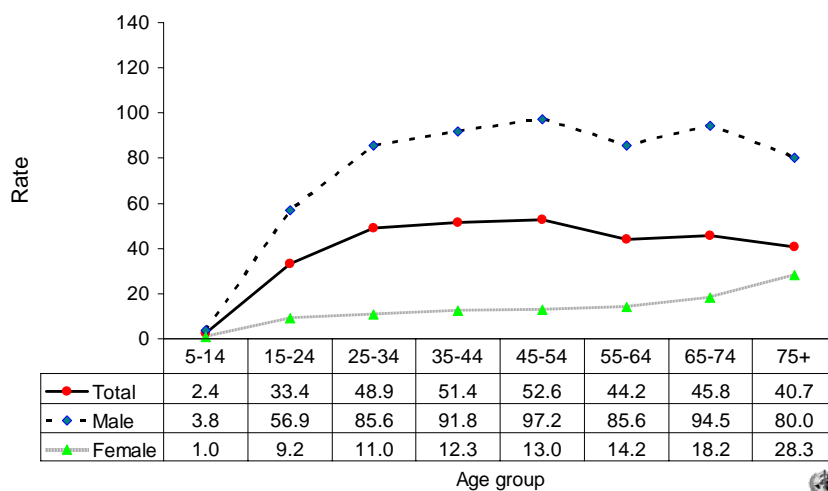


Suicide rates (per 100,000), by gender, Russian Federation, 1980-2002.



Suicide rates (per 100,000), by gender and age, Russian Federation, 2002.



Number of suicides by age group and gender. RUSSIAN FEDERATION, 2002.

Age (years)	5-14	15-24	25-34	35-44	45-54	55-64	65-74	75+	All
Males	338	6667	8696	10247	9872	4762	4088	1297	46252
Females	83	1054	1086	1421	1489	1084	1388	1452	9078
Total	421	7721	9782	11668	11361	5846	5476	2749	55330