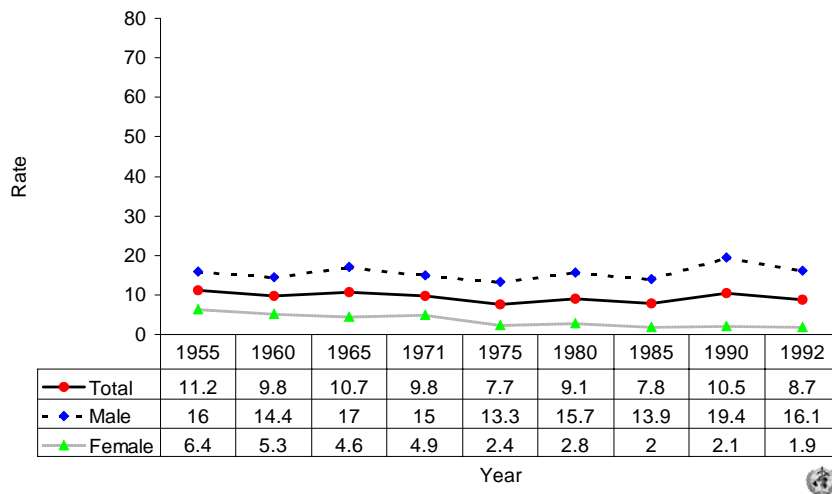
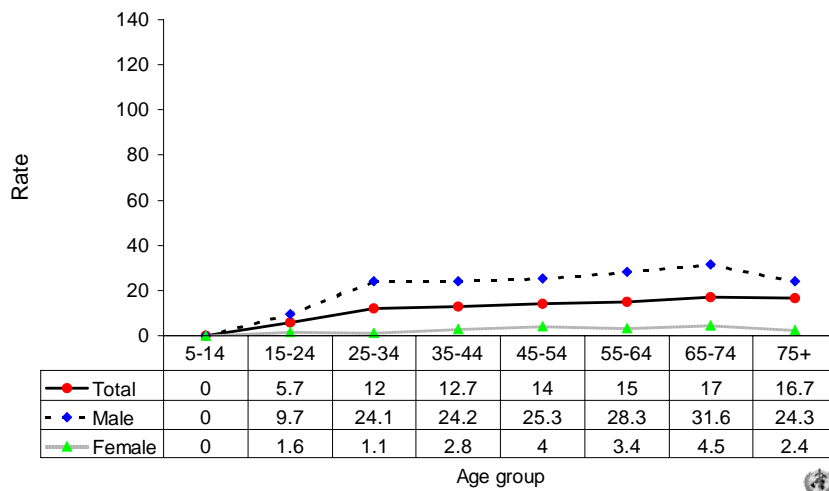


Suicide rates (per 100,000), by gender, Puerto Rico, 1955-1992.



Suicide rates (per 100,000), by gender and age, Puerto Rico, 1992.



Number of suicides by age group and gender. PUERTO RICO, 1992.

Age (years)	5-14	15-24	25-34	35-44	45-54	55-64	65-74	75+	All
Males	0	31	61	53	45	36	30	23	279
Females	0	5	3	7	8	5	5	2	35
Total	0	36	64	60	53	41	35	25	314