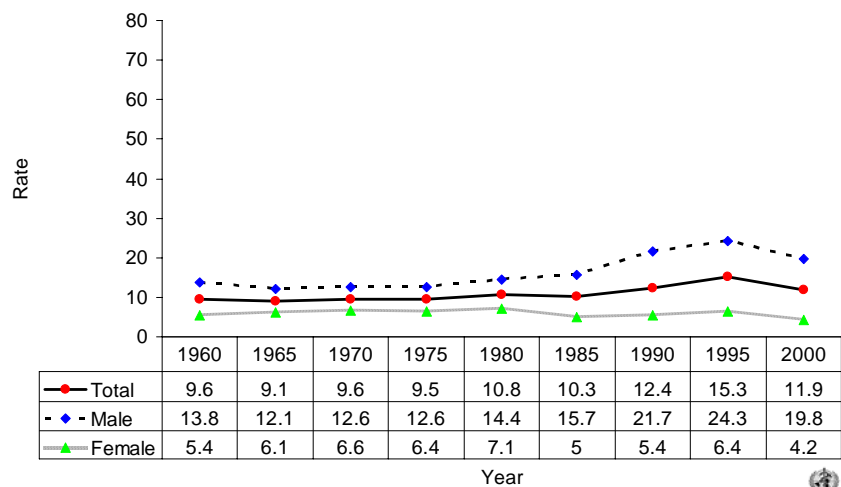
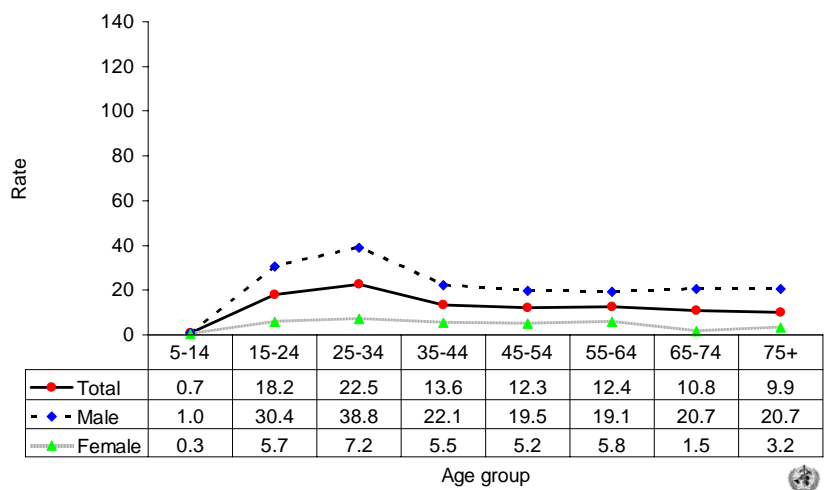


Suicide rates (per 100,000), by gender, New Zealand, 1960-2000.



Suicide rates (per 100,000), by gender and age, New Zealand, 2000.



Number of suicides by age group and gender. NEW ZEALAND, 2000.

Age (years)	5-14	15-24	25-34	35-44	45-54	55-64	65-74	75+	All
Males	3	81	105	65	48	32	25	16	375
Females	1	15	21	17	13	10	2	4	83
Total	4	96	126	82	61	42	27	20	458