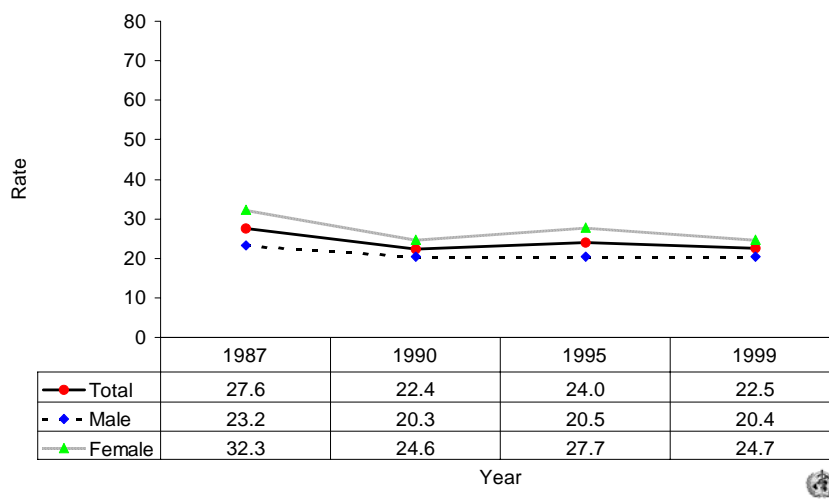
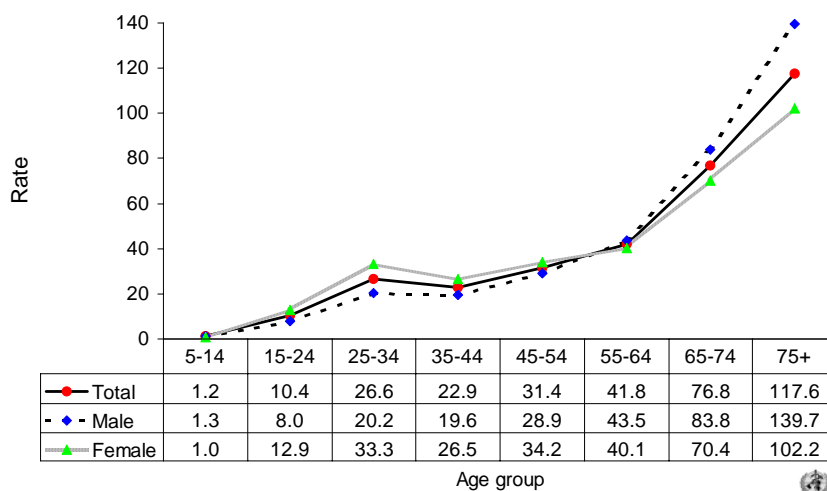


Suicide rates (per 100,000), by gender, China
(mainland, selected rural areas), 1987-1999.



Suicide rates (per 100,000), by gender and age, China
(mainland, selected rural areas), 1999.



Number of suicides by age group and gender. CHINA (mainland, selected rural areas), 1999.

Age (years)	5-14	15-24	25-34	35-44	45-54	55-64	65-74	75+	All
Males	64	446	980	783	822	918	1027	743	5783
Females	47	699	1529	989	886	788	949	785	6672
Total	111	1145	2509	1772	1708	1706	1976	1528	12455