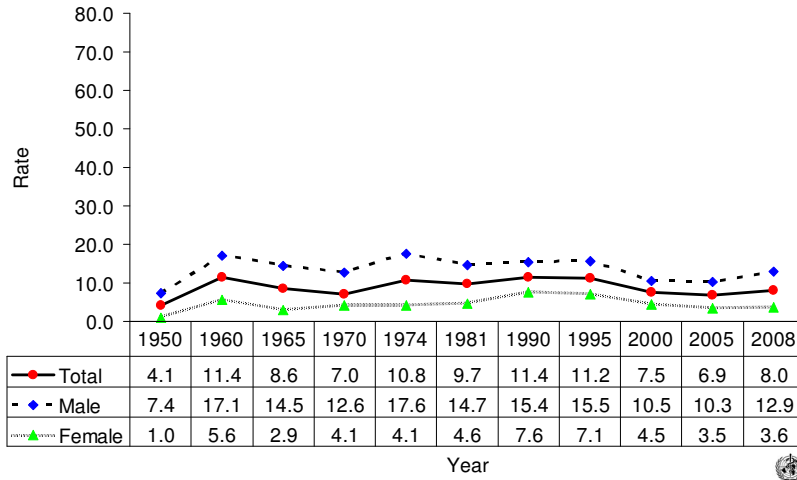
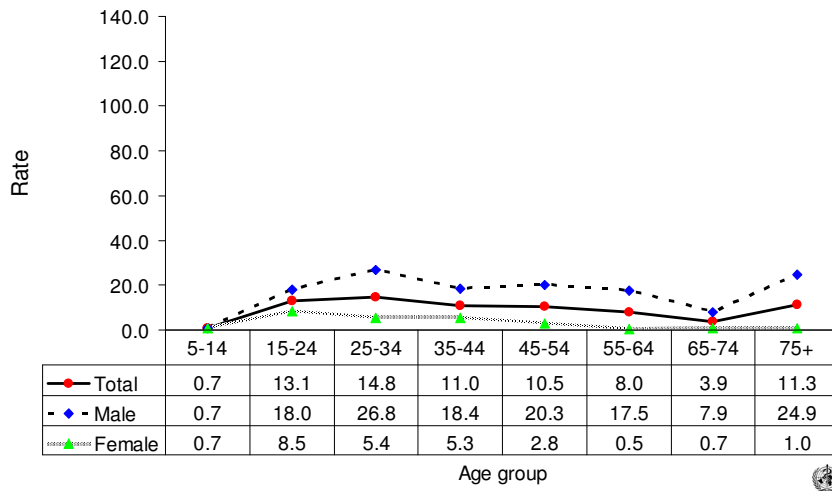


Suicide rates (per 100,000), by gender, El Salvador, 1950-2008.



Suicide rates (per 100,000), by gender and age, El Salvador, 2008.



Number of suicides by age group and gender. EL SALVADOR, 2008.

Age (years)	5-14	15-24	25-34	35-44	45-54	55-64	65-74	75+	All
Males	5	106	103	57	46	29	9	19	374
Females	5	53	26	21	8	1	1	1	116
Total	10	159	129	78	54	30	10	20	490