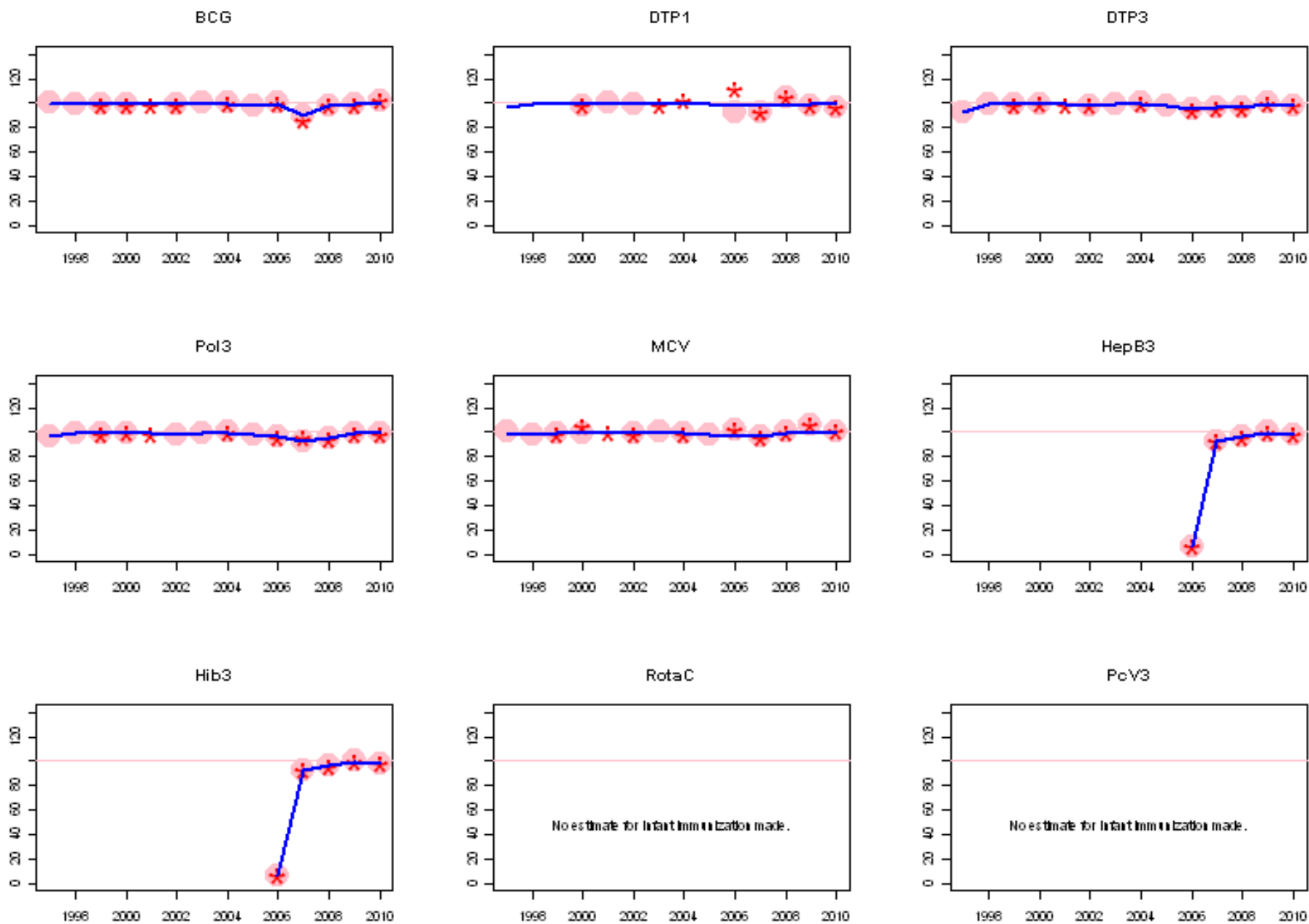
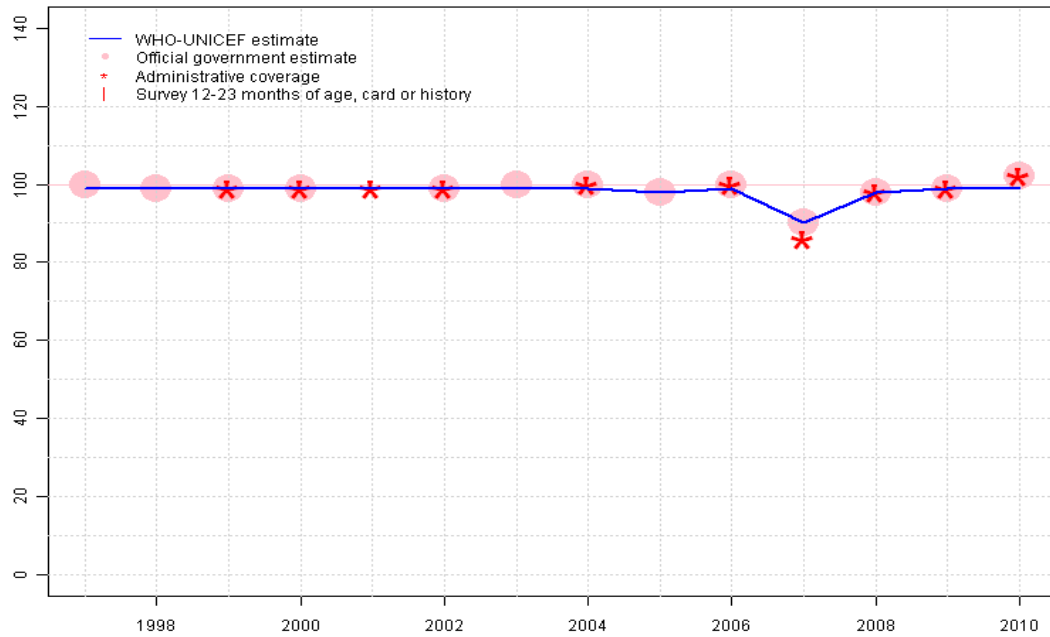


Dominica. WHO and UNICEF estimates of immunization coverage: 2010 revision



Dominica - BCG

DMA - BCG



Description:

1997: Legacy estimate.

1998: Estimate based on reported data.

1999: Estimate based on reported data.

2000: Estimate based on reported data.

2001: Estimate based on reported data.

2002: Estimate based on reported data.

2003: Estimate based on reported data.

2004: Estimate based on reported data.

2005: Estimate based on reported data.

2006: Estimate based on reported data.

2007: Estimate based on reported data.

2008: Estimate based on reported data.

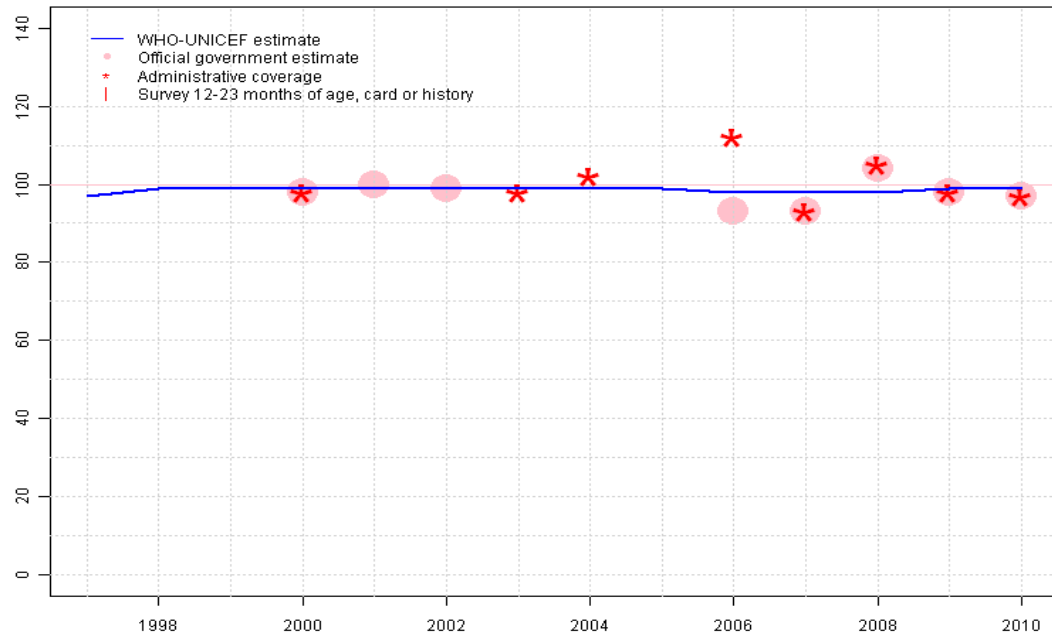
2009: Estimate based on reported data.

2010: Estimate based on extrapolation from 2009 value of 99 percent. Reported data of 102 percent greater than 100 percent.

	1997	1998	1999	2000	2001	2002	2003	2004	2005	2006	2007	2008	2009	2010
Estimate	99	99	99	99	99	99	99	99	98	99	90	98	99	99
Official	100	99	99	99	NA	99	100	100	98	100	90	98	99	102
Administrative	NA	NA	99	99	99	99	NA	100	NA	100	86	98	99	102
Survey	NA	NA	NA	NA	NA	NA	NA	NA	NA	NA	NA	NA	NA	NA

Dominica - DTP1

DMA - DTP1



	1997	1998	1999	2000	2001	2002	2003	2004	2005	2006	2007	2008	2009	2010
Estimate	97	99	99	99	99	99	99	99	99	98	98	98	99	99
Official	NA	NA	NA	98	100	99	NA	NA	NA	93	93	104	98	97
Administrative	NA	NA	NA	98	NA	NA	98	102	NA	112	93	105	98	97
Survey	NA	NA	NA	NA	NA	NA	NA	NA	NA	NA	NA	NA	NA	NA

Description:

1997: Legacy estimate.

1998: No accepted DTP1 data. Estimate based on DTP3 coverage of 99. Current estimate of 99 percent changed from previous revision value of 98 percent.

1999: No accepted DTP1 data. Estimate based on DTP3 coverage of 99. Current estimate of 99 percent changed from previous revision value of 98 percent.

2000: DTP1 coverage estimated based on DTP3 coverage of 99. Current estimate of 99 percent changed from previous revision value of 98 percent.

2001: Reported data calibrated to 1997 and 2002 levels. Current estimate of 99 percent changed from previous revision value of 98 percent.

2002: Estimate based on reported data. Current estimate of 99 percent changed from previous revision value of 98 percent.

2003: DTP1 coverage estimated based on DTP3 coverage of 99. Current estimate of 99 percent changed from previous revision value of 98 percent.

2004: No accepted DTP1 data. Estimate based on DTP3 coverage of 100. Reported data of 102 percent greater than 100 percent. Current estimate of 99 percent changed from previous revision value of 98 percent.

2005: No accepted DTP1 data. Estimate based on DTP3 coverage of 98. Current estimate of 99 percent changed from previous revision value of 98 percent.

2006: DTP1 coverage estimated based on DTP3 coverage of 95. Current estimate of 98 percent changed from previous revision value of 97 percent.

2007: DTP1 coverage estimated based on DTP3 coverage of 96. Current estimate of 98 percent changed from previous revision value of 97 percent.

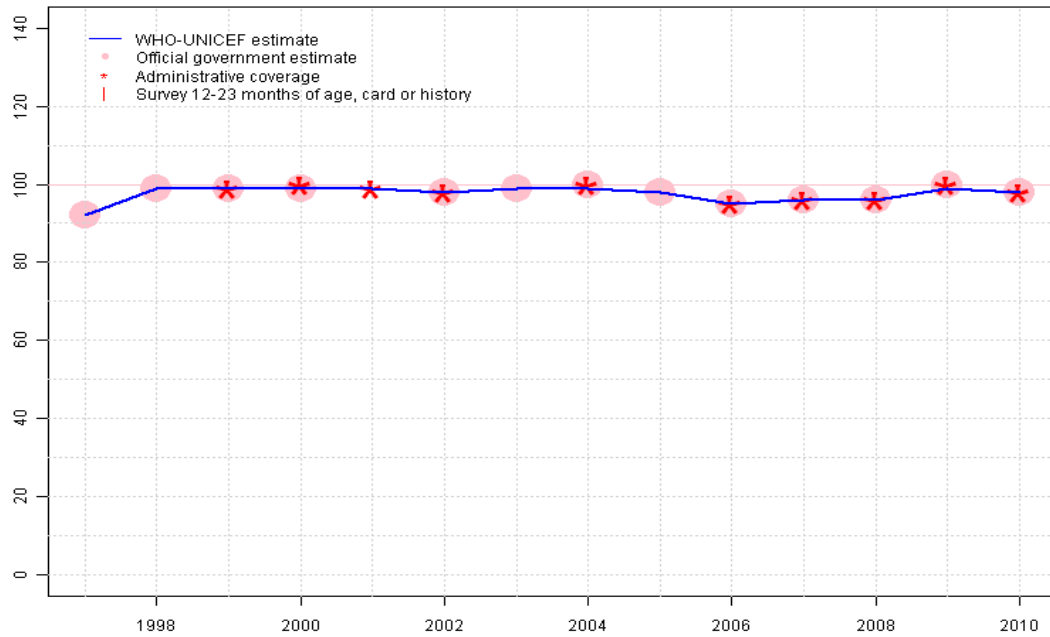
2008: No accepted DTP1 data. Estimate based on DTP3 coverage of 96. Reported data of 104 percent greater than 100 percent. Current estimate of 98 percent changed from previous revision value of 97 percent.

2009: DTP1 coverage estimated based on DTP3 coverage of 100. Current estimate of 99 percent changed from previous revision value of 98 percent.

2010: DTP1 coverage estimated based on DTP3 coverage of 98.

Dominica - DTP3

DMA - DTP3



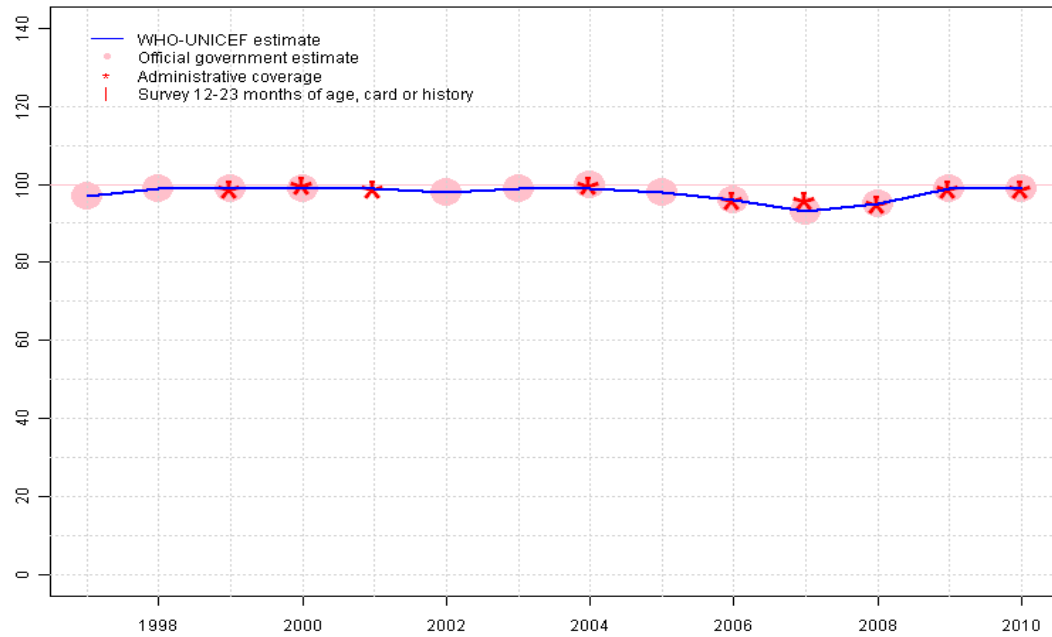
Description:

1997: Legacy estimate.
 1998: Estimate based on reported data.
 1999: Estimate based on reported data.
 2000: Estimate based on reported data.
 2001: Estimate based on reported data.
 2002: Estimate based on reported data.
 2003: Estimate based on reported data.
 2004: Estimate based on reported data.
 2005: Estimate based on reported data.
 2006: Estimate based on reported data.
 2007: Estimate based on reported data.
 2008: Estimate based on reported data.
 2009: Estimate based on reported data.
 2010: Estimate based on reported data.

	1997	1998	1999	2000	2001	2002	2003	2004	2005	2006	2007	2008	2009	2010
Estimate	92	99	99	99	99	98	99	99	98	95	96	96	99	98
Official	92	99	99	99	NA	98	99	100	98	95	96	96	100	98
Administrative	NA	NA	99	100	99	98	NA	100	NA	95	96	96	100	98
Survey	NA	NA	NA	NA	NA	NA	NA	NA	NA	NA	NA	NA	NA	NA

Dominica - Pol3

DMA - Pol3



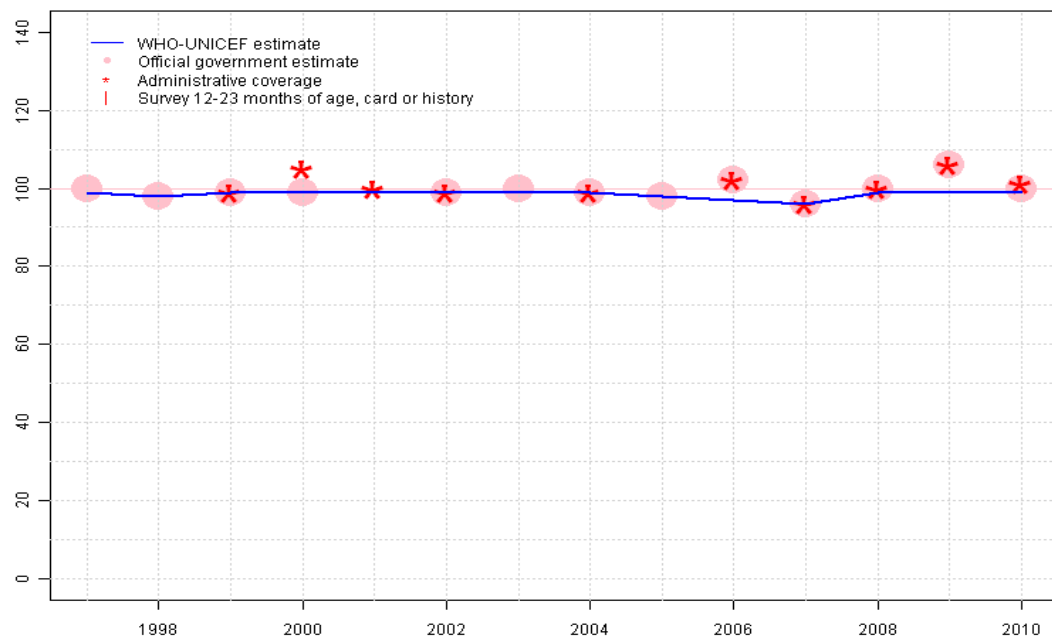
Description:

1997: Legacy estimate.
 1998: Estimate based on reported data.
 1999: Estimate based on reported data.
 2000: Estimate based on reported data.
 2001: Estimate based on reported data.
 2002: Estimate based on reported data.
 2003: Estimate based on reported data.
 2004: Estimate based on reported data.
 2005: Estimate based on reported data.
 2006: Estimate based on reported data.
 2007: Estimate based on reported data.
 2008: Estimate based on reported data.
 2009: Estimate based on reported data.
 2010: Estimate based on reported data.

	1997	1998	1999	2000	2001	2002	2003	2004	2005	2006	2007	2008	2009	2010
Estimate	97	99	99	99	99	98	99	99	98	96	93	95	99	99
Official	97	99	99	99	NA	98	99	100	98	96	93	95	99	99
Administrative	NA	NA	99	100	99	NA	NA	100	NA	96	96	95	99	99
Survey	NA	NA	NA	NA	NA	NA	NA	NA	NA	NA	NA	NA	NA	NA

Dominica - MCV

DMA - MCV



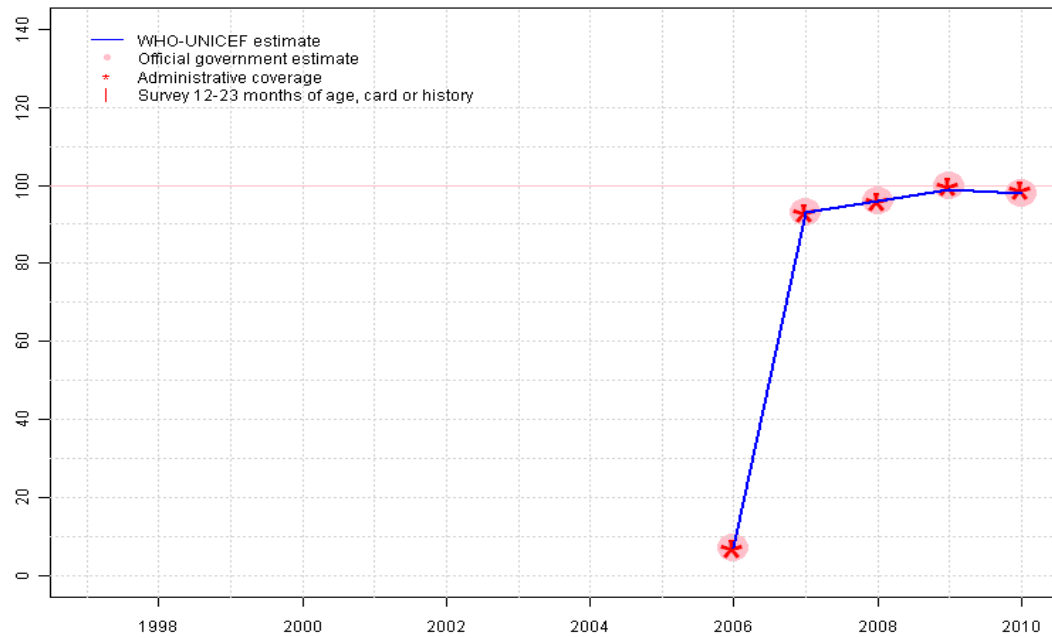
Description:

- 1997: Legacy estimate.
- 1998: Estimate based on reported data.
- 1999: Estimate based on reported data.
- 2000: Estimate based on reported data.
- 2001: Estimate based on reported data.
- 2002: Estimate based on reported data.
- 2003: Estimate based on reported data.
- 2004: Estimate based on reported data.
- 2005: Estimate based on reported data.
- 2006: Estimate based on interpolation between 2005 and 2007. Reported data of 102 percent greater than 100 percent.
- 2007: Estimate based on reported data.
- 2008: Estimate based on reported data.
- 2009: Estimate based on interpolation between 2008 and 2010. Reported data of 106 percent greater than 100 percent.
- 2010: Estimate based on reported data.

	1997	1998	1999	2000	2001	2002	2003	2004	2005	2006	2007	2008	2009	2010
Estimate	99	98	99	99	99	99	99	99	98	97	96	99	99	99
Official	100	98	99	99	NA	99	100	99	98	102	96	100	106	100
Administrative	NA	NA	99	105	100	99	NA	99	NA	102	96	100	106	101
Survey	NA	NA	NA	NA	NA	NA	NA	NA	NA	NA	NA	NA	NA	NA

Dominica - HepB3

DMA - HepB3



Description:

2006: Estimate based on reported data. HepB introduced in 2006

2007: Estimate based on reported data.

2008: Estimate based on reported data.

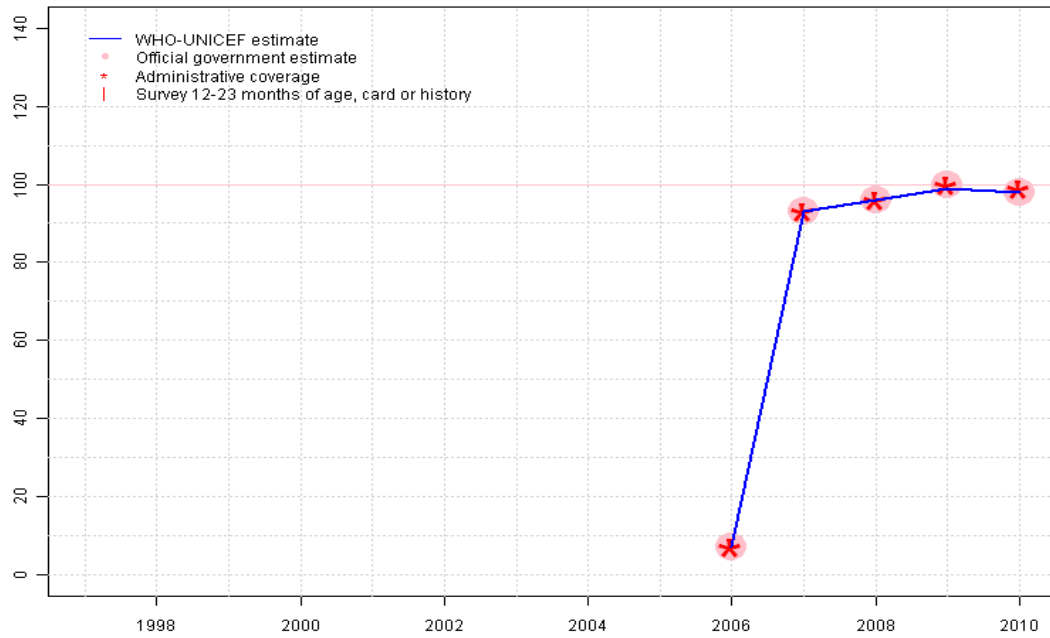
2009: Estimate based on reported data.

2010: Estimate based on reported data.

	1997	1998	1999	2000	2001	2002	2003	2004	2005	2006	2007	2008	2009	2010
Estimate	NA	NA	NA	NA	NA	NA	NA	NA	NA	7	93	96	99	98
Official	NA	NA	NA	NA	NA	NA	NA	NA	NA	7	93	96	100	98
Administrative	NA	NA	NA	NA	NA	NA	NA	NA	NA	7	93	96	100	99
Survey	NA	NA	NA	NA	NA	NA	NA	NA	NA	NA	NA	NA	NA	NA

Dominica - Hib3

DMA - Hib3



Description:

2006: Estimate based on reported data. Hib introduced in 2006 Vaccine presentation is DTP-HepB-Hib.

2007: Estimate based on reported data.

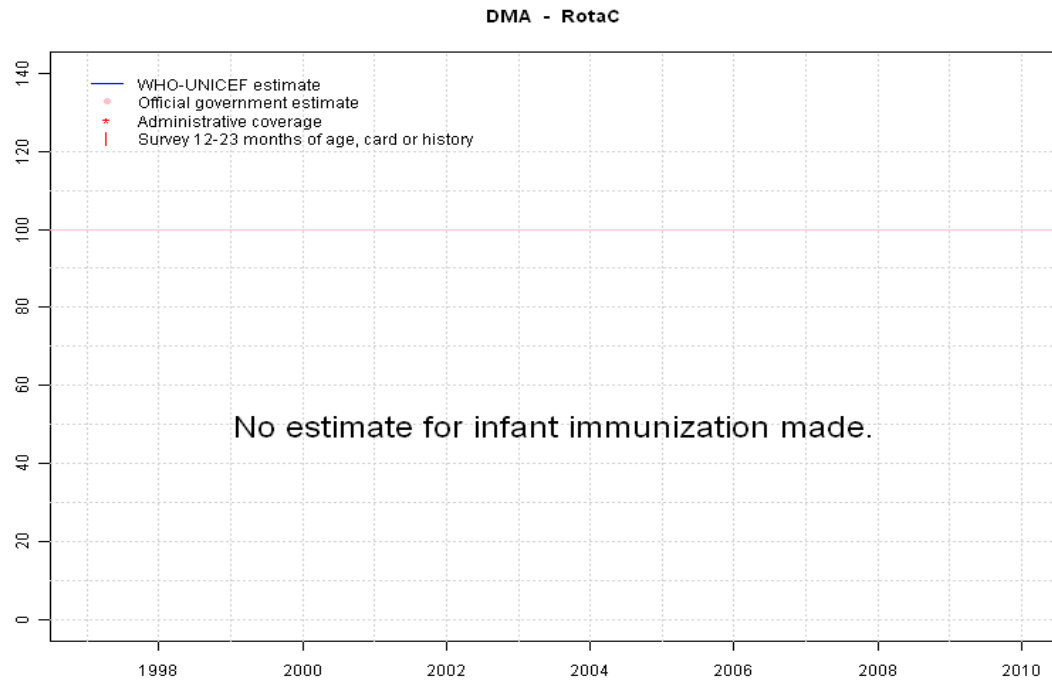
2008: Estimate based on reported data.

2009: Estimate based on reported data.

2010: Estimate based on reported data.

	1997	1998	1999	2000	2001	2002	2003	2004	2005	2006	2007	2008	2009	2010
Estimate	NA	NA	NA	NA	NA	NA	NA	NA	NA	7	93	96	99	98
Official	NA	NA	NA	NA	NA	NA	NA	NA	NA	7	93	96	100	98
Administrative	NA	NA	NA	NA	NA	NA	NA	NA	NA	7	93	96	100	99
Survey	NA	NA	NA	NA	NA	NA	NA	NA	NA	NA	NA	NA	NA	NA

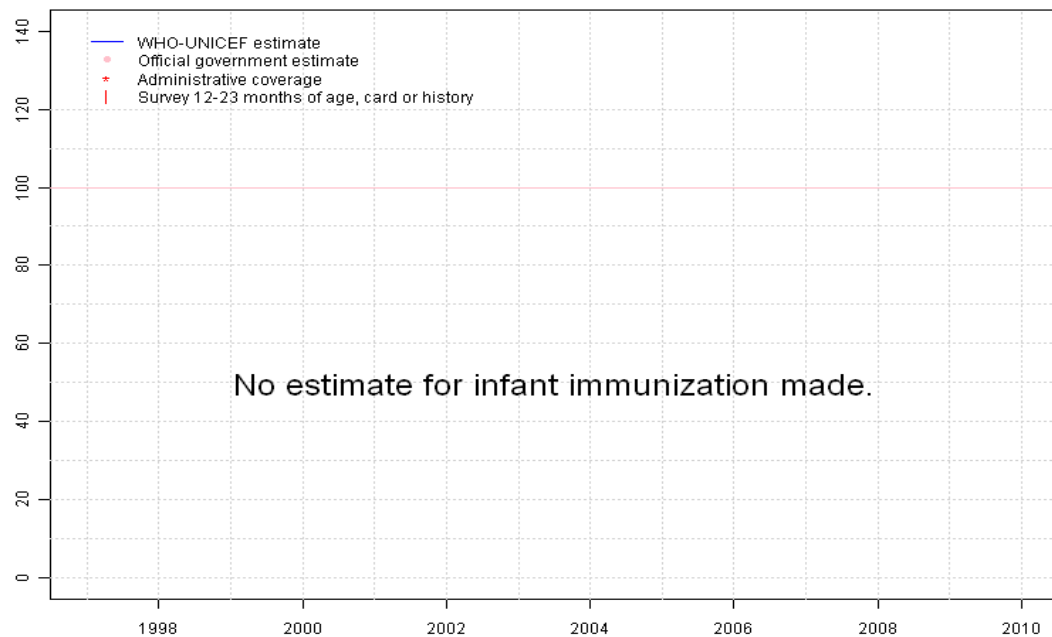
Dominica - RotaC



	1997	1998	1999	2000	2001	2002	2003	2004	2005	2006	2007	2008	2009	2010
Estimate	NA	NA	NA	NA	NA	NA	NA	NA	NA	NA	NA	NA	NA	NA
Official	NA	NA	NA	NA	NA	NA	NA	NA	NA	NA	NA	NA	NA	NA
Administrative	NA	NA	NA	NA	NA	NA	NA	NA	NA	NA	NA	NA	NA	NA
Survey	NA	NA	NA	NA	NA	NA	NA	NA	NA	NA	NA	NA	NA	NA

Dominica - PcV3

DMA - PcV3



	1997	1998	1999	2000	2001	2002	2003	2004	2005	2006	2007	2008	2009	2010
Estimate	NA	NA	NA	NA	NA	NA	NA	NA	NA	NA	NA	NA	NA	NA
Official	NA	NA	NA	NA	NA	NA	NA	NA	NA	NA	NA	NA	NA	NA
Administrative	NA	NA	NA	NA	NA	NA	NA	NA	NA	NA	NA	NA	NA	NA
Survey	NA	NA	NA	NA	NA	NA	NA	NA	NA	NA	NA	NA	NA	NA

Further information and estimates for 1980-1996 are available at:

http://www.childinfo.org/immunization_countryreports.html

http://www.who.int/immunization_monitoring/routine/immunization_coverage/en/index4.html