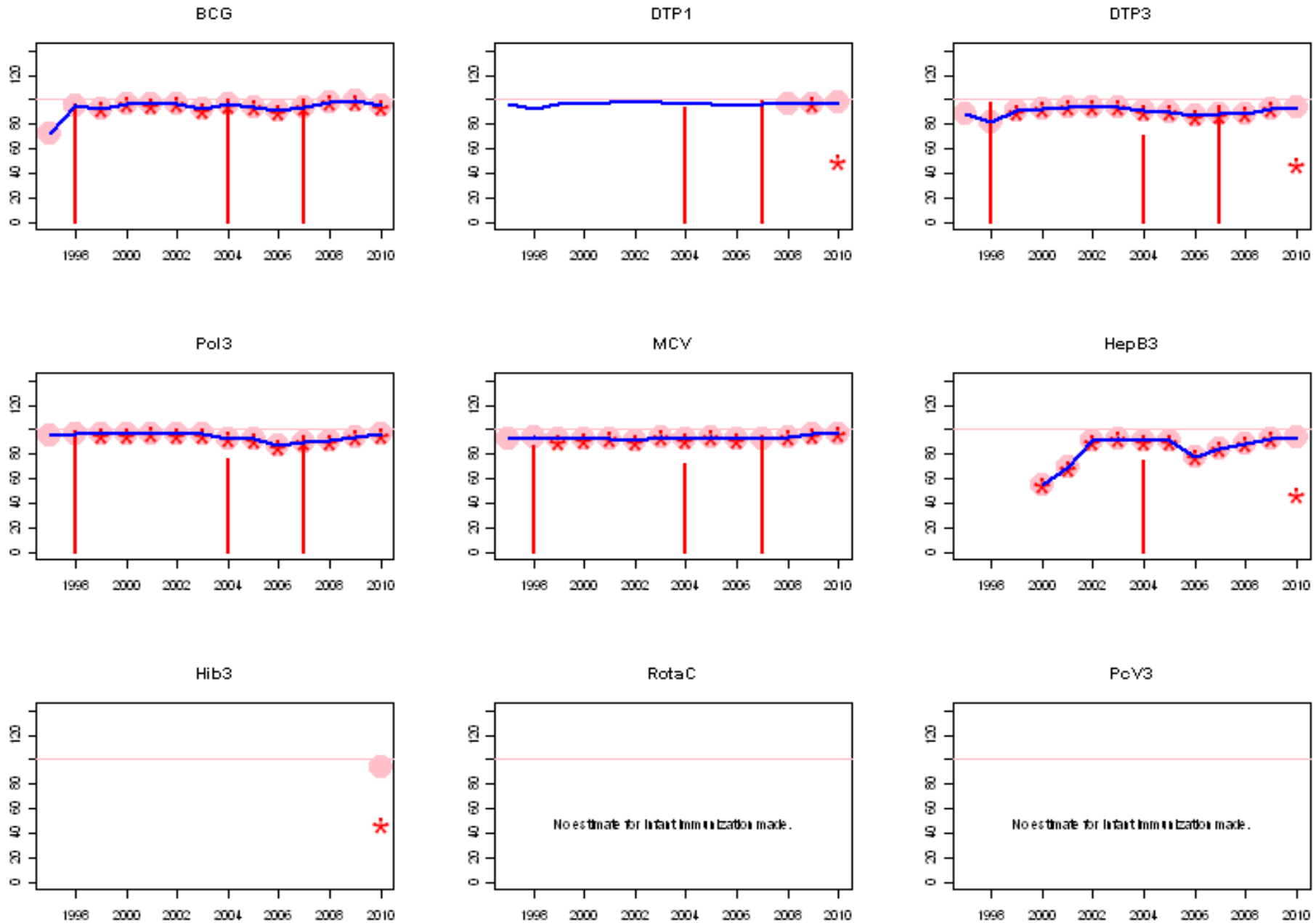
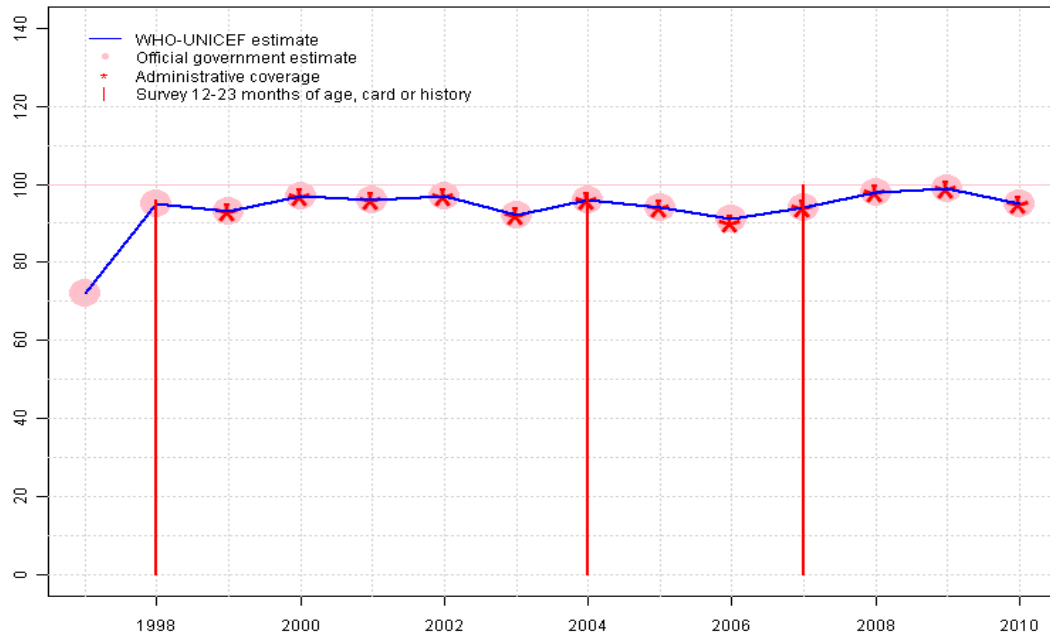


Armenia. WHO and UNICEF estimates of immunization coverage: 2010 revision



# Armenia - BCG

ARM - BCG



## Description:

1997: Legacy estimate.

1998: Estimate based on reported data. 96 percent survey results supports reported data of 95 percent.

1999: Estimate based on reported data.

2000: Estimate based on reported data.

2001: Estimate based on reported data. Current estimate of 96 percent changed from previous revision value of 97 percent.

2002: Estimate based on reported data.

2003: Estimate based on reported data.

2004: Estimate based on reported data. Survey not accepted. Survey results inconsistent with other survey results; drop out rates in excess of 20 percentage conflict with other surveys findings of less than 5 percent drop out.

2005: Estimate based on reported data.

2006: Estimate based on reported data.

2007: Estimate based on reported data. 100 percent survey results supports reported data of 94 percent. Sample size of 306 children is too small to make strong conclusions.

2008: Estimate based on reported data.

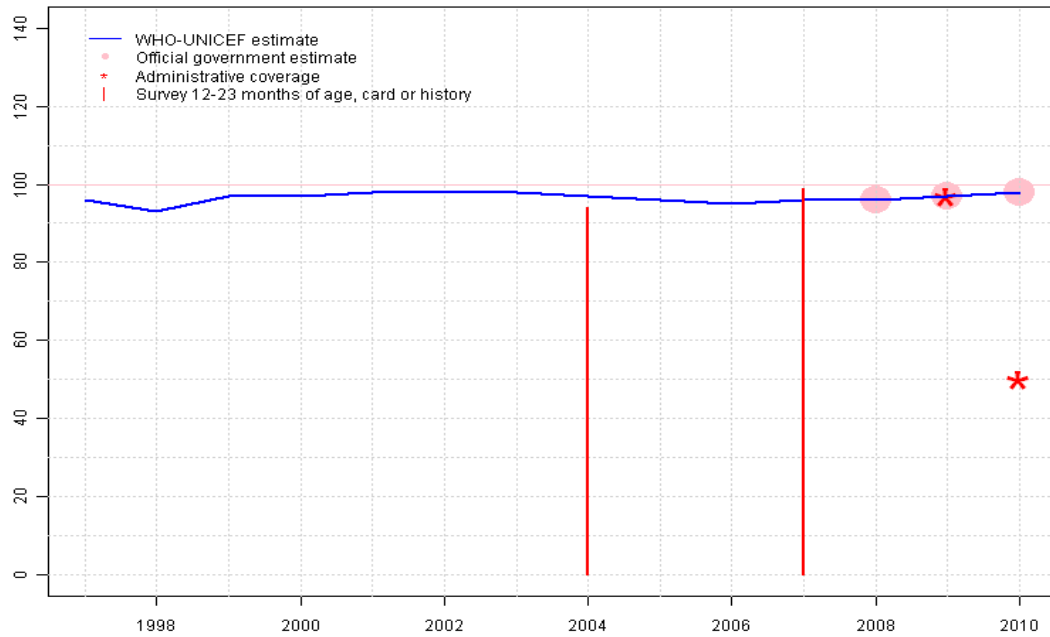
2009: Estimate based on reported data.

2010: Estimate based on reported data.

	1997	1998	1999	2000	2001	2002	2003	2004	2005	2006	2007	2008	2009	2010
Estimate	72	95	93	97	96	97	92	96	94	91	94	98	99	95
Official	72	95	93	97	96	97	92	96	94	91	94	98	99	95
Administrative	NA	NA	93	97	96	97	92	96	94	90	94	98	99	95
Survey	NA	96	NA	NA	NA	NA	NA	98	NA	NA	100	NA	NA	NA

# Armenia - DTP1

ARM - DTP1



	1997	1998	1999	2000	2001	2002	2003	2004	2005	2006	2007	2008	2009	2010
Estimate	96	93	97	97	98	98	98	97	96	95	96	96	97	98
Official	NA	NA	NA	NA	NA	NA	NA	NA	NA	NA	NA	96	97	98
Administrative	NA	NA	NA	NA	NA	NA	NA	NA	NA	NA	NA	NA	97	50
Survey	NA	NA	NA	NA	NA	NA	NA	94	NA	NA	99	NA	NA	NA

## Description:

1997: Legacy estimate.

1998: No accepted DTP1 data. Estimate based on DTP3 coverage of 82. Current estimate of 93 percent changed from previous revision value of 96 percent.

1999: No accepted DTP1 data. Estimate based on DTP3 coverage of 91. Current estimate of 97 percent changed from previous revision value of 96 percent.

2000: No accepted DTP1 data. Estimate based on DTP3 coverage of 93. Current estimate of 97 percent changed from previous revision value of 96 percent.

2001: No accepted DTP1 data. Estimate based on DTP3 coverage of 94. Current estimate of 98 percent changed from previous revision value of 96 percent.

2002: No accepted DTP1 data. Estimate based on DTP3 coverage of 94. Current estimate of 98 percent changed from previous revision value of 96 percent.

2003: No accepted DTP1 data. Estimate based on DTP3 coverage of 94. Current estimate of 98 percent changed from previous revision value of 96 percent.

2004: No accepted DTP1 data. Estimate based on DTP3 coverage of 91. Survey not accepted. Survey results inconsistent with other survey results; drop out rates in excess of 20 percentage conflict with other surveys findings of less than 5 percent drop out. Current estimate of 97 percent changed from previous revision value of 96 percent.

2005: No accepted DTP1 data. Estimate based on DTP3 coverage of 90.

2006: No accepted DTP1 data. Estimate based on DTP3 coverage of 87. Current estimate of 95 percent changed from previous revision value of 96 percent.

2007: No accepted reported data. Reported data of 96 percent estimated by extrapolating from 2008 supports trend in reported data. 99 percent survey results Sample size of 306 children is to small to make strong conclusions.

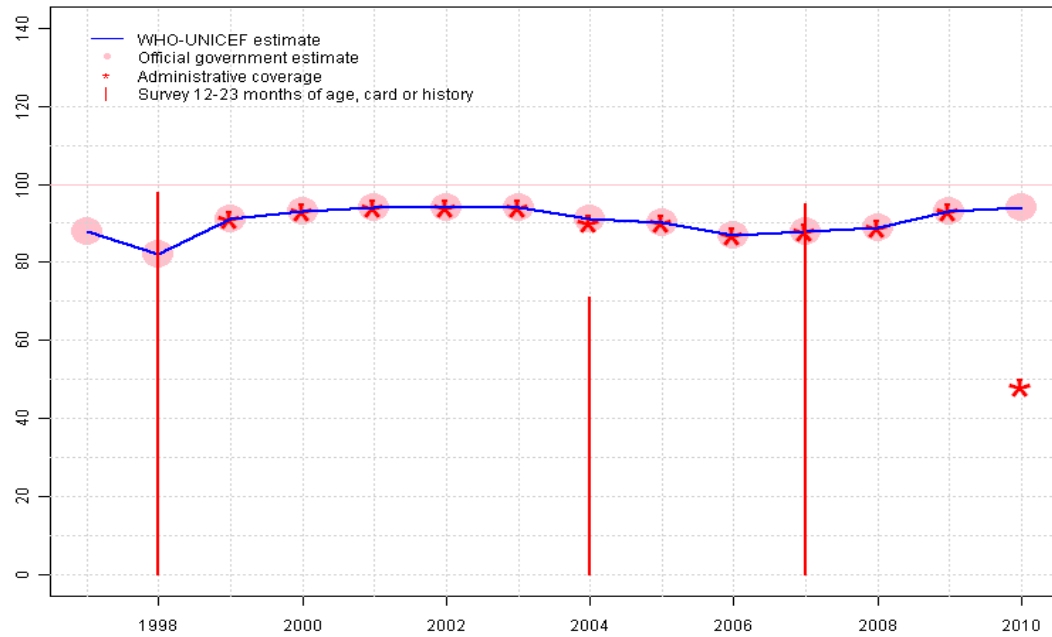
2008: Estimate based on reported data.

2009: Estimate based on reported data.

2010: Estimate based on reported data. Administrative data includes only DTP-HepB-Hib.

# Armenia - DTP3

ARM - DTP3



## Description:

1997: Legacy estimate.

1998: Estimate based on reported data. Survey not accepted. Estimates based on reported data. Survey confirms reported coverage for all other vaccines.

1999: Estimate based on reported data.

2000: Estimate based on reported data.

2001: Estimate based on reported data.

2002: Estimate based on reported data.

2003: Estimate based on reported data.

2004: Estimate based on reported data. Survey not accepted. Survey results inconsistent with other survey results; drop out rates in excess of 20 percentage conflict with other surveys findings of less than 5 percent drop out.

2005: Estimate based on reported data.

2006: Estimate based on reported data.

2007: Estimate based on reported data. 95 percent survey results supports reported data of 88 percent. Sample size of 306 children is too small to make strong conclusions.

2008: Estimate based on reported data.

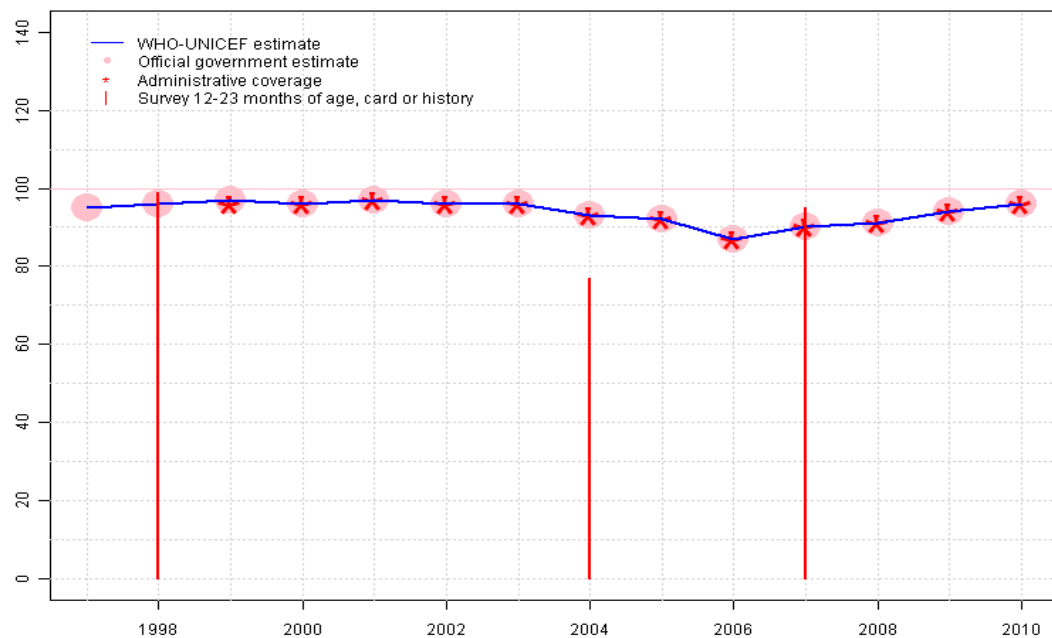
2009: Estimate based on reported data.

2010: Estimate based on reported data. Administrative data includes only DTP-HepB-Hib.

	1997	1998	1999	2000	2001	2002	2003	2004	2005	2006	2007	2008	2009	2010
Estimate	88	82	91	93	94	94	94	91	90	87	88	89	93	94
Official	88	82	91	93	94	94	94	91	90	87	88	89	93	94
Administrative	NA	NA	91	93	94	94	94	90	90	87	88	89	93	48
Survey	NA	98	NA	NA	NA	NA	NA	71	NA	NA	95	NA	NA	NA

# Armenia - Pol3

ARM - Pol3



## Description:

1997: Legacy estimate.

1998: Estimate based on reported data. 99 percent survey results supports reported data of 96 percent.

1999: Estimate based on reported data.

2000: Estimate based on reported data.

2001: Estimate based on reported data.

2002: Estimate based on reported data.

2003: Estimate based on reported data.

2004: Estimate based on reported data. Survey not accepted. Survey results inconsistent with other survey results; drop out rates in excess of 20 percentage conflict with other surveys findings of less than 5 percent drop out.

2005: Estimate based on reported data.

2006: Estimate based on reported data.

2007: Estimate based on reported data. 95 percent survey results supports reported data of 90 percent. Sample size of 306 children is too small to make strong conclusions.

2008: Estimate based on reported data.

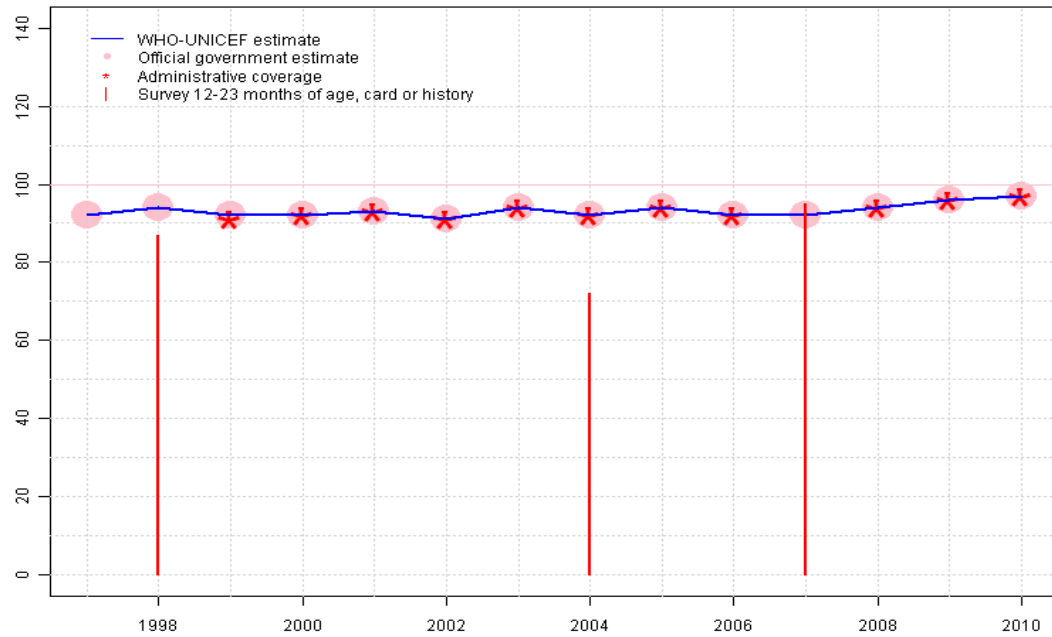
2009: Estimate based on reported data.

2010: Estimate based on reported data.

	1997	1998	1999	2000	2001	2002	2003	2004	2005	2006	2007	2008	2009	2010
Estimate	95	96	97	96	97	96	96	93	92	87	90	91	94	96
Official	95	96	97	96	97	96	96	93	92	87	90	91	94	96
Administrative	NA	NA	96	96	97	96	96	93	92	87	90	91	94	96
Survey	NA	99	NA	NA	NA	NA	NA	77	NA	NA	95	NA	NA	NA

# Armenia - MCV

ARM - MCV



## Description:

1997: Legacy estimate.

1998: Estimate based on reported data. 87 percent survey results supports reported data of 94 percent.

1999: Estimate based on reported data.

2000: Estimate based on reported data.

2001: Estimate based on reported data.

2002: Estimate based on reported data.

2003: Estimate based on reported data.

2004: Estimate based on reported data. Survey not accepted. Survey results inconsistent with other survey results; drop out rates in excess of 20 percentage conflict with other surveys findings of less than 5 percent drop out.

2005: Estimate based on reported data.

2006: Estimate based on reported data.

2007: Estimate based on reported data. 95 percent survey results supports reported data of 92 percent. Sample size of 306 children is too small to make strong conclusions. Current estimate of 92 percent changed from previous revision value of 93 percent.

2008: Estimate based on reported data.

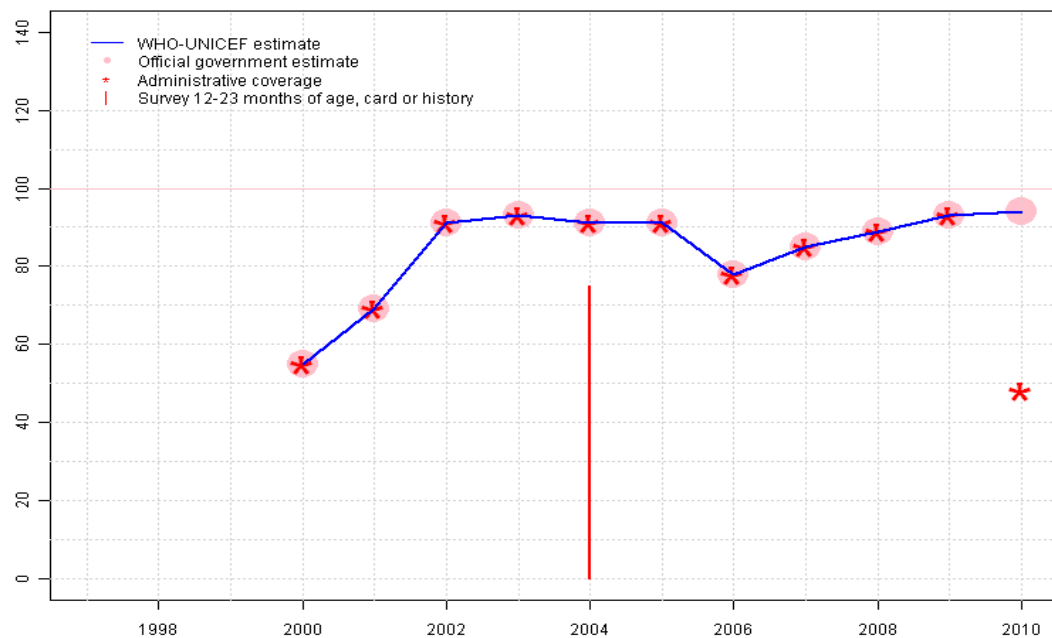
2009: Estimate based on reported data.

2010: Estimate based on reported data.

	1997	1998	1999	2000	2001	2002	2003	2004	2005	2006	2007	2008	2009	2010
Estimate	92	94	92	92	93	91	94	92	94	92	92	94	96	97
Official	92	94	92	92	93	91	94	92	94	92	92	94	96	97
Administrative	NA	NA	91	92	93	91	94	92	94	92	NA	94	96	97
Survey	NA	87	NA	NA	NA	NA	NA	72	NA	NA	95	NA	NA	NA

# Armenia - HepB3

ARM - HepB3



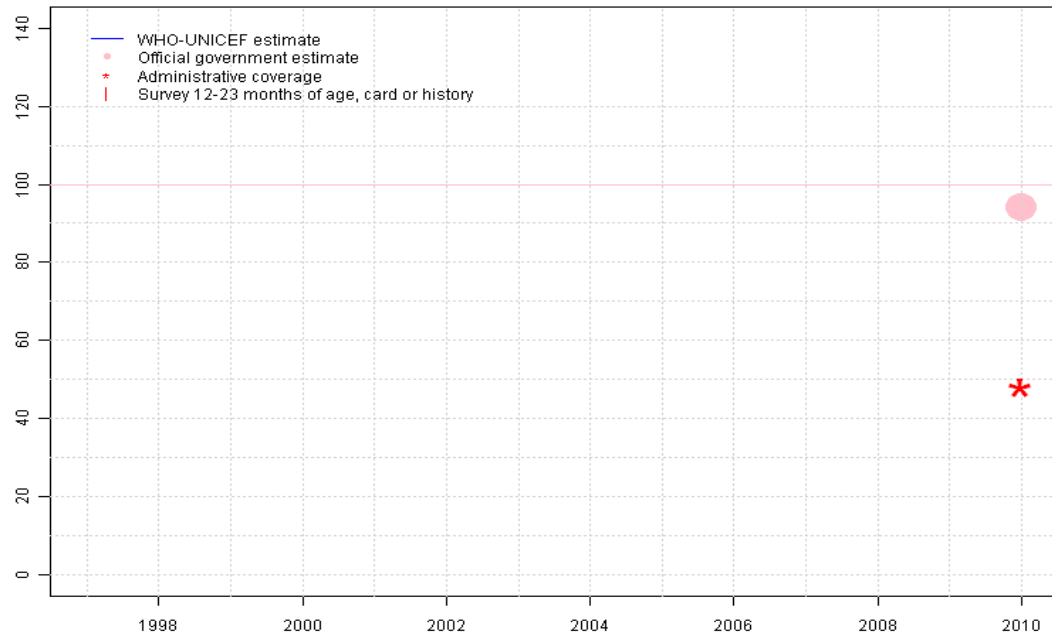
## Description:

- 2000: Estimate based on reported data. HepB introduced in 1999. Reporting started in 2000. Vaccine presentation is HepB .
- 2001: Estimate based on reported data.
- 2002: Estimate based on reported data.
- 2003: Estimate based on reported data.
- 2004: Estimate based on reported data. Survey not accepted. Survey results inconsistent with other survey results; drop out rates in excess of 20 percentage conflict with other surveys findings of less than 5 percent drop out.
- 2005: Estimate based on reported data.
- 2006: Estimate based on reported data.
- 2007: Estimate based on reported data.
- 2008: Estimate based on reported data.
- 2009: Estimate based on reported data.
- 2010: Estimate based on reported data. Administrative data includes only DTP-HepB-Hib.

	1997	1998	1999	2000	2001	2002	2003	2004	2005	2006	2007	2008	2009	2010
Estimate	NA	NA	NA	55	69	91	93	91	91	78	85	89	93	94
Official	NA	NA	NA	55	69	91	93	91	91	78	85	89	93	94
Administrative	NA	NA	NA	55	69	91	93	91	91	78	85	89	93	48
Survey	NA	NA	NA	NA	NA	NA	NA	75	NA	NA	NA	NA	NA	NA

# Armenia - Hib3

ARM - Hib3



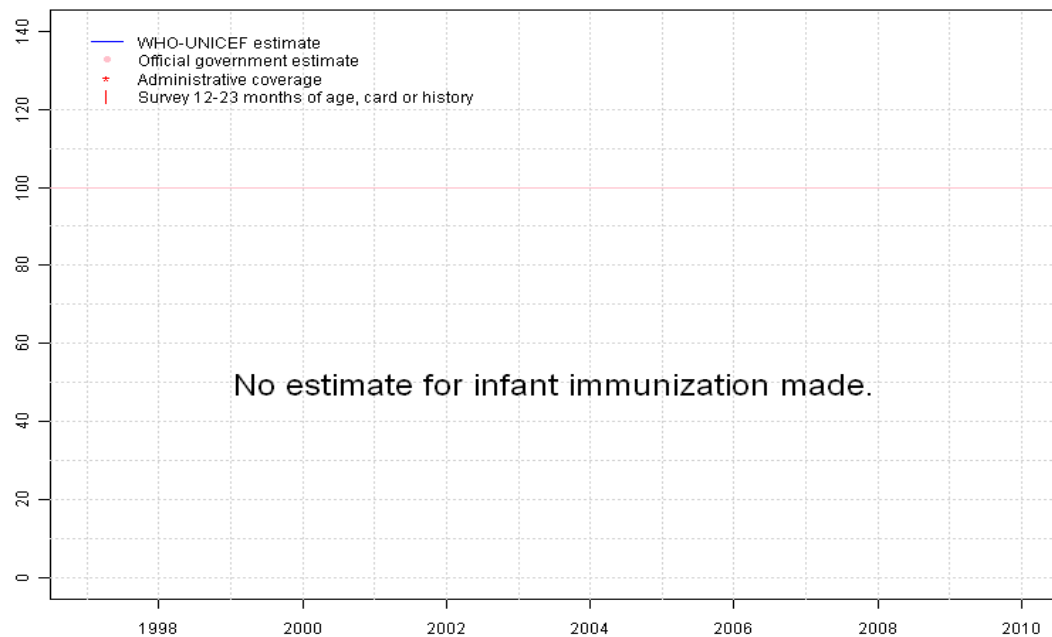
## Description:

2010: Estimate based on reported data. DTP-HepB-Hib vaccine was introduced in September 2009.

	1997	1998	1999	2000	2001	2002	2003	2004	2005	2006	2007	2008	2009	2010
Estimate	NA	NA	NA	NA	NA	NA	NA	NA	NA	NA	NA	NA	NA	48
Official	NA	NA	NA	NA	NA	NA	NA	NA	NA	NA	NA	NA	NA	94
Administrative	NA	NA	NA	NA	NA	NA	NA	NA	NA	NA	NA	NA	NA	48
Survey	NA	NA	NA	NA	NA	NA	NA	NA	NA	NA	NA	NA	NA	NA

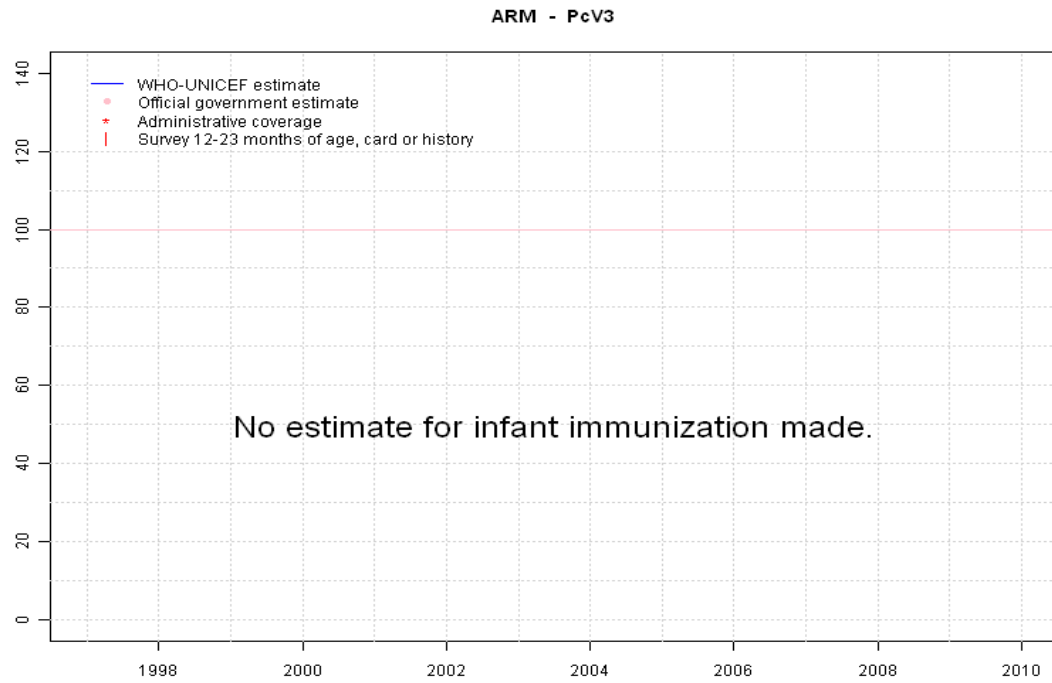
# Armenia - RotaC

ARM - RotaC



	1997	1998	1999	2000	2001	2002	2003	2004	2005	2006	2007	2008	2009	2010
Estimate	NA	NA	NA	NA	NA	NA	NA	NA	NA	NA	NA	NA	NA	NA
Official	NA	NA	NA	NA	NA	NA	NA	NA	NA	NA	NA	NA	NA	NA
Administrative	NA	NA	NA	NA	NA	NA	NA	NA	NA	NA	NA	NA	NA	NA
Survey	NA	NA	NA	NA	NA	NA	NA	NA	NA	NA	NA	NA	NA	NA

# Armenia - PcV3



	1997	1998	1999	2000	2001	2002	2003	2004	2005	2006	2007	2008	2009	2010
Estimate	NA	NA	NA	NA	NA	NA	NA	NA	NA	NA	NA	NA	NA	NA
Official	NA	NA	NA	NA	NA	NA	NA	NA	NA	NA	NA	NA	NA	NA
Administrative	NA	NA	NA	NA	NA	NA	NA	NA	NA	NA	NA	NA	NA	NA
Survey	NA	NA	NA	NA	NA	NA	NA	NA	NA	NA	NA	NA	NA	NA

# Armenia - survey details

## 2007 Armenia Demographic and Health Survey 2010

Vaccine	Confirmation method	Coverage	Age cohort	Sample	Cards seen
BCG	Card or History	100	18-29 m	306	92
DTP1	Card or History	99	18-29 m	306	92
DTP3	Card or History	95	18-29 m	306	92
MCV	Card or History	95	18-29 m	306	92
Pol1	Card or History	99	18-29 m	306	92
Pol3	Card or History	95	18-29 m	306	92

## 2004 Armenia Demographic and Health Survey 2005

Vaccine	Confirmation method	Coverage	Age cohort	Sample	Cards seen
BCG	C or H <12 months	98	12-23 m	302	92
BCG	Card	90	12-23 m	302	92
BCG	Card or History	98	12-23 m	302	92
BCG	History	8	12-23 m	302	92
DTP1	Card	87	12-23 m	302	92
DTP1	History	7	12-23 m	302	92
DTP1	Card or History	94	12-23 m	302	92
DTP1	C or H <12 months	87	12-23 m	302	92
DTP3	C or H <12 months	45	12-23 m	302	92
DTP3	Card	68	12-23 m	302	92
DTP3	Card or History	71	12-23 m	302	92
DTP3	History	3	12-23 m	302	92
HepB1	History	7	12-23 m	302	92
HepB1	C or H <12 months	97	12-23 m	302	92
HepB1	Card or History	98	12-23 m	302	92
HepB1	Card	90	12-23 m	302	92
HepB3	Card	72	12-23 m	302	92
HepB3	Card or History	75	12-23 m	302	92
HepB3	History	4	12-23 m	302	92
HepB3	C or H <12 months	66	12-23 m	302	92

MCV	History	3	12-23 m	302	92
MCV	Card or History	72	12-23 m	302	92
MCV	Card	69	12-23 m	302	92
MCV	C or H <12 months	3	12-23 m	302	92
Pol1	History	8	12-23 m	302	92
Pol1	Card	90	12-23 m	302	92
Pol1	Card or History	98	12-23 m	302	92
Pol1	C or H <12 months	93	12-23 m	302	92
Pol3	History	4	12-23 m	302	92
Pol3	Card or History	77	12-23 m	302	92
Pol3	C or H <12 months	42	12-23 m	302	92
Pol3	Card	72	12-23 m	302	92

## 1999 Armenia Demographic and Health Survey 2000, 2001

Vaccine	Confirmation method	Coverage	Age cohort	Sample	Cards seen
BCG	Card	89	12-23 m	283	93
DTP1	Card	92	12-23 m	283	93
DTP3	Card	88	12-23 m	283	93
MCV	Card	73	12-23 m	283	93
Pol1	Card	93	12-23 m	283	93
Pol3	Card	91	12-23 m	283	93

## 1998 Evaluation of the National Immunization Program of the Republic of Armenia 1999

Vaccine	Confirmation method	Coverage	Age cohort	Sample	Cards seen
BCG	Card or History	96	15-26 m	2145	0
DTP3	Card or History	98	15-26 m	2145	0
MCV	Card or History	87	15-26 m	2145	0
Pol3	Card or History	99	15-26 m	2145	0

Further information and estimates for 1980-1996 are available at:

[http://www.childinfo.org/immunization\\_countryreports.html](http://www.childinfo.org/immunization_countryreports.html)

# Armenia - survey details

---

[http://www.who.int/immunization\\_monitoring/routine/immunization\\_coverage/en/index4.html](http://www.who.int/immunization_monitoring/routine/immunization_coverage/en/index4.html)