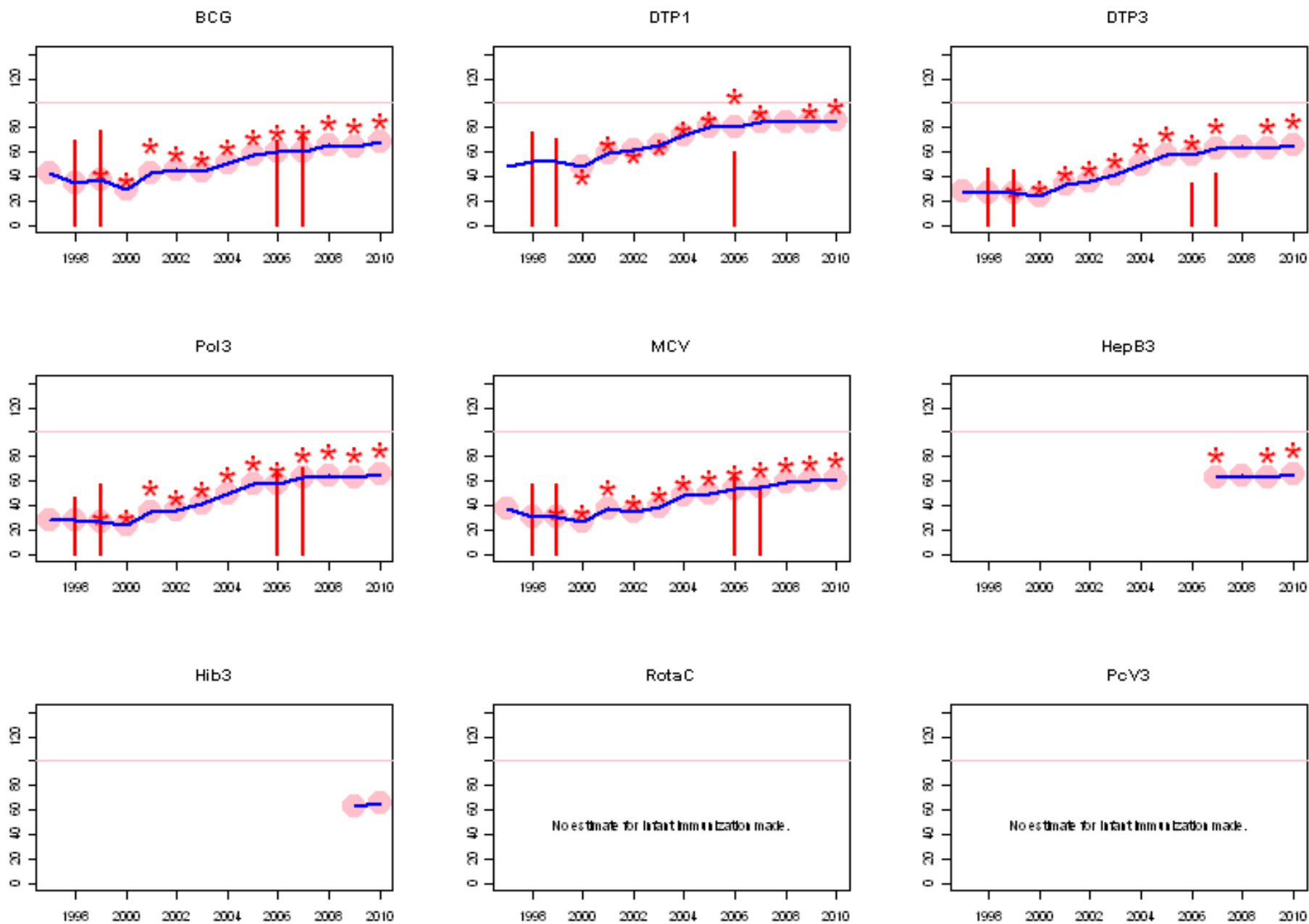
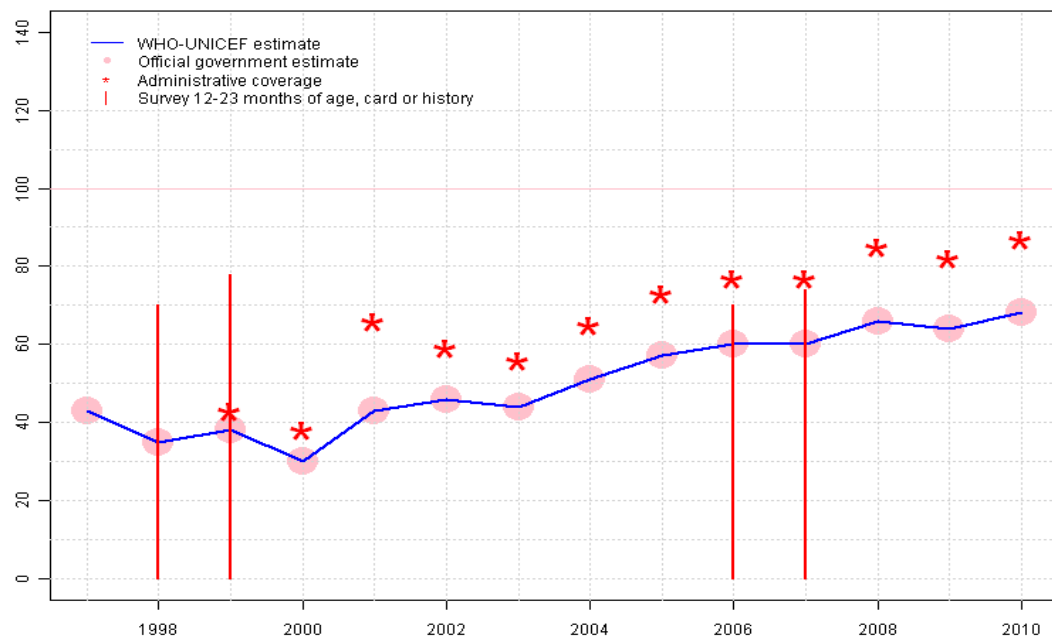


Afghanistan. WHO and UNICEF estimates of immunization coverage: 2010 revision



Afghanistan - BCG

AFG - BCG



	1997	1998	1999	2000	2001	2002	2003	2004	2005	2006	2007	2008	2009	2010
Estimate	43	35	38	30	43	46	44	51	57	60	60	66	64	68
Official	43	35	38	30	43	46	44	51	57	60	60	66	64	68
Administrative	NA	NA	43	38	66	59	56	65	73	77	77	85	82	87
Survey	NA	70	78	NA	NA	NA	NA	NA	NA	70	74	NA	NA	NA

Description:

1997: Legacy estimate. WHO and UNICEF estimate based on official government estimate. Trend in official government estimate follows trend in administrative data. Official government estimate is provisional pending results from the 2011 MICS and the EPI national survey. There is significant uncertainty in the provisional estimate due to uncertainty in denominator (last census in 1979) and difficulties in recording and reporting the number of vaccinations provided from some service providers. Current estimate of 43 percent changed from previous revision value of 55 percent.

1998: Estimate based on reported data. Survey not accepted. Survey includes immunizations given during national immunization days. See comment for 1997 estimates. Current estimate of 35 percent changed from previous revision value of 45 percent.

1999: Estimate based on reported data. Survey results not accepted. Sample size 223 less than 300. Survey not accepted. Survey includes immunizations given during national immunization days. See comment for 1997 estimates. Current estimate of 38 percent changed from previous revision value of 48 percent.

2000: Estimate based on reported data. See comment for 1997 estimates. Data reflects unstable situation in the country. Current estimate of 30 percent changed from previous revision value of 38 percent.

2001: Estimate based on reported data. See comment for 1997 estimates. Current estimate of 43 percent changed from previous revision value of 55 percent.

2002: Estimate based on reported data. See comment for 1997 estimates. Current estimate of 46 percent changed from previous revision value of 59 percent.

2003: Estimate based on reported data. See comment for 1997 estimates. Current estimate of 44 percent changed from previous revision value of 56 percent.

2004: Estimate based on reported data. See comment for 1997 estimates. Current estimate of 51 percent changed from previous revision value of 65 percent.

2005: Estimate based on reported data. See comment for 1997 estimates. Current estimate of 57 percent changed from previous revision value of 73 percent.

2006: Estimate based on reported data. Survey not accepted. Survey is not nationally representative and does not include 5 provinces. Card retention was 17 percent. See comment for 1997 estimates. Current estimate of 60 percent changed from previous revision value of 77 percent.

2007: Estimate based on reported data. Survey not accepted. Survey shows inconsistent results between levels of BCG and DTP coverage. See comment for 1997 estimates. Current estimate of 60 percent changed from previous revision value of 77 percent.

2008: Estimate based on reported data. See comment for 1997 estimates. Current estimate of 66 percent changed from previous revision value of 85 percent.

2009: Estimate based on reported data. See comment for 1997 estimates. Data

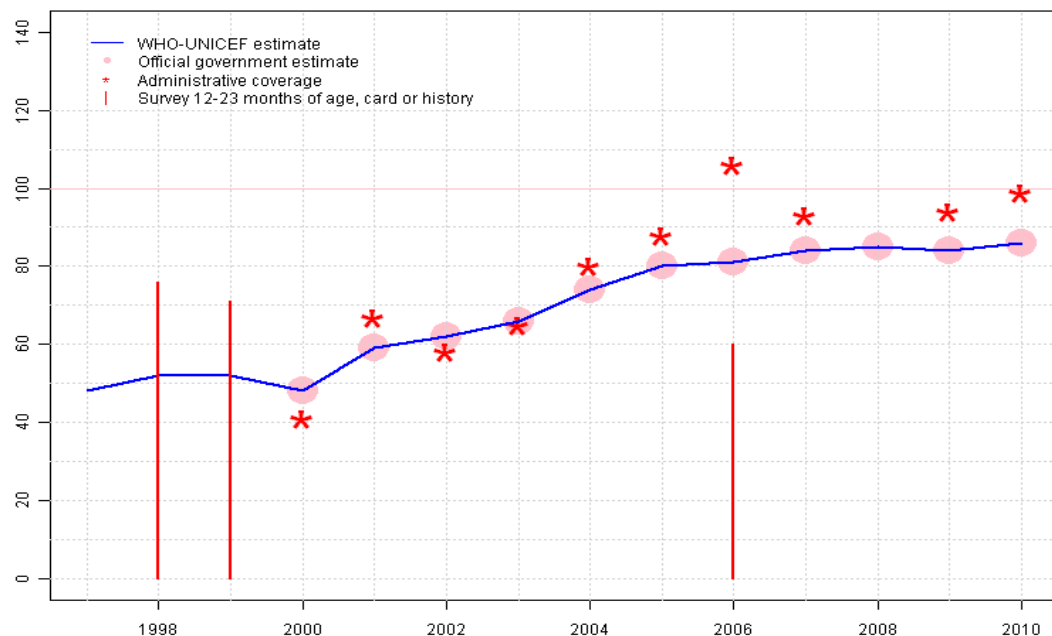
Afghanistan - BCG

quality self-assessment conducted in 12 provinces found instances of over-reporting and errors in recording and reporting. Current estimate of 64 percent changed from previous revision value of 82 percent.

2010: Estimate based on reported data. See comment for 1997 estimates. Data quality self-assessment conducted in 22 provinces found instances of over-reporting and errors in recording and reporting.

Afghanistan - DTP1

AFG - DTP1



	1997	1998	1999	2000	2001	2002	2003	2004	2005	2006	2007	2008	2009	2010
Estimate	48	52	52	48	59	62	66	74	80	81	84	85	84	86
Official	NA	NA	NA	48	59	62	66	74	80	81	84	85	84	86
Administrative	NA	NA	NA	41	67	58	65	80	88	106	93	NA	94	99
Survey	NA	76	71	NA	NA	NA	NA	NA	NA	60	NA	NA	NA	NA

Description:

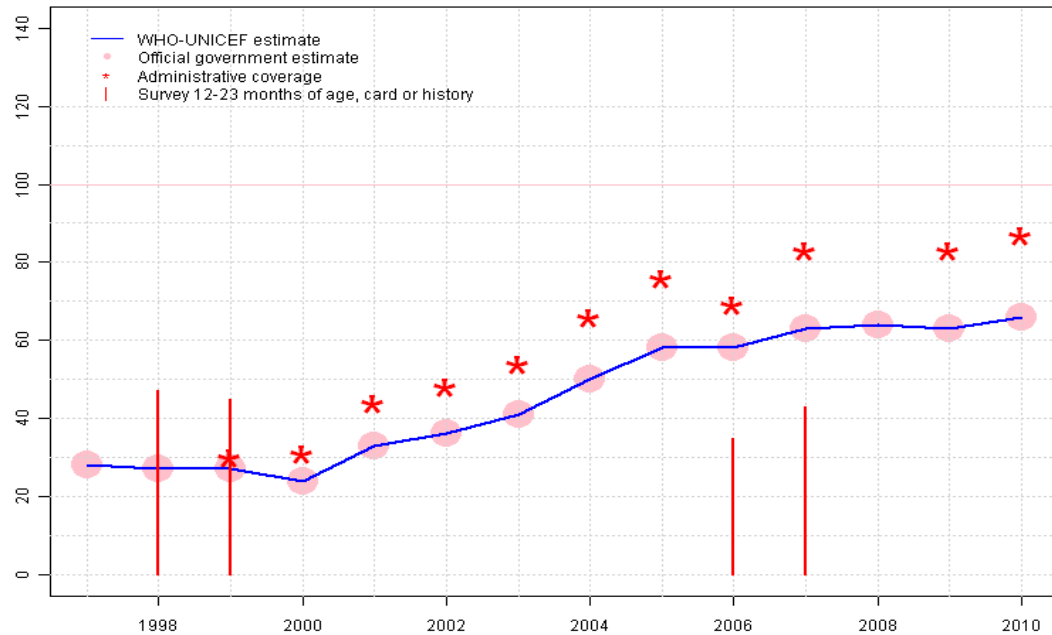
- 1997: Legacy estimate. WHO and UNICEF estimate based on official government estimate. Trend in official government estimate follows trend in administrative data. Official government estimate is provisional pending results from the 2011 MICS and the EPI national survey. There is significant uncertainty in the provisional estimate due to uncertainty in denominator (last census in 1979) and difficulties in recording and reporting the number of vaccinations provided from some service providers. Current estimate of 48 percent changed from previous revision value of 62 percent.
- 1998: No accepted DTP1 data. Estimate based on DTP3 coverage of 27. Survey not accepted. Survey includes immunizations given during national immunization days. See comment for 1997 estimates. Current estimate of 52 percent changed from previous revision value of 55 percent.
- 1999: No accepted DTP1 data. Estimate based on DTP3 coverage of 27. Survey results not accepted. Sample size 223 less than 300. Survey not accepted. Survey includes immunizations given during national immunization days. See comment for 1997 estimates. Current estimate of 52 percent changed from previous revision value of 48 percent.
- 2000: Estimate based on reported data. See comment for 1997 estimates. Current estimate of 48 percent changed from previous revision value of 41 percent.
- 2001: Estimate based on reported data. See comment for 1997 estimates. Current estimate of 59 percent changed from previous revision value of 56 percent.
- 2002: Estimate based on reported data. See comment for 1997 estimates. Current estimate of 62 percent changed from previous revision value of 58 percent.
- 2003: Estimate based on reported data. See comment for 1997 estimates. Current estimate of 66 percent changed from previous revision value of 65 percent.
- 2004: Estimate based on reported data. See comment for 1997 estimates. Current estimate of 74 percent changed from previous revision value of 80 percent.
- 2005: Estimate based on reported data. See comment for 1997 estimates. Current estimate of 80 percent changed from previous revision value of 88 percent.
- 2006: Estimate based on reported data. Survey not accepted. Survey is not nationally representative and does not include 5 provinces. Card retention was 17 percent. See comment for 1997 estimates. Current estimate of 81 percent changed from previous revision value of 90 percent.
- 2007: Estimate based on reported data. See comment for 1997 estimates. Current estimate of 84 percent changed from previous revision value of 93 percent.
- 2008: Estimate based on reported data. See comment for 1997 estimates. Current estimate of 85 percent changed from previous revision value of 96 percent.
- 2009: Estimate based on reported data. See comment for 1997 estimates. Data quality self-assessment conducted in 12 provinces found instances of over-reporting and errors in recording and reporting. Current estimate of 84 percent changed from previous revision value of 94 percent.

Afghanistan - DTP1

2010: Estimate based on reported data. See comment for 1997 estimates. Data quality self-assessment conducted in 22 provinces found instances of over-reporting and errors in recording and reporting.

Afghanistan - DTP3

AFG - DTP3



	1997	1998	1999	2000	2001	2002	2003	2004	2005	2006	2007	2008	2009	2010
Estimate	28	27	27	24	33	36	41	50	58	58	63	64	63	66
Official	28	27	27	24	33	36	41	50	58	58	63	64	63	66
Administrative	NA	NA	30	31	44	48	54	66	76	69	83	NA	83	87
Survey	NA	47	45	NA	NA	NA	NA	NA	NA	35	43	NA	NA	NA

Description:

1997: Legacy estimate. WHO and UNICEF estimate based on official government estimate. Trend in official government estimate follows trend in administrative data. Official government estimate is provisional pending results from the 2011 MICS and the EPI national survey. There is significant uncertainty in the provisional estimate due to uncertainty in denominator (last census in 1979) and difficulties in recording and reporting the number of vaccinations provided from some service providers. Current estimate of 28 percent changed from previous revision value of 37 percent.

1998: Estimate based on reported data. Survey not accepted. Survey includes immunizations given during national immunization days. See comment for 1997 estimates. Current estimate of 27 percent changed from previous revision value of 36 percent.

1999: Estimate based on reported data. Survey results not accepted. Sample size 223 less than 300. Survey not accepted. Survey includes immunizations given during national immunization days. See comment for 1997 estimates. Current estimate of 27 percent changed from previous revision value of 35 percent.

2000: Estimate based on reported data. See comment for 1997 estimates. Current estimate of 24 percent changed from previous revision value of 31 percent.

2001: Estimate based on reported data. See comment for 1997 estimates. Current estimate of 33 percent changed from previous revision value of 45 percent.

2002: Estimate based on reported data. See comment for 1997 estimates. Current estimate of 36 percent changed from previous revision value of 48 percent.

2003: Estimate based on reported data. See comment for 1997 estimates. Current estimate of 41 percent changed from previous revision value of 54 percent.

2004: Estimate based on reported data. See comment for 1997 estimates. Current estimate of 50 percent changed from previous revision value of 66 percent.

2005: Estimate based on reported data. See comment for 1997 estimates. Current estimate of 58 percent changed from previous revision value of 76 percent.

2006: Estimate based on reported data. Survey not accepted. Survey is not nationally representative and does not include 5 provinces. Card retention was 17 percent. See comment for 1997 estimates. Current estimate of 58 percent changed from previous revision value of 77 percent.

2007: Estimate based on reported data. Survey not accepted. Survey shows inconsistent results between levels of BCG and DTP coverage. See comment for 1997 estimates. Current estimate of 63 percent changed from previous revision value of 83 percent.

2008: Estimate based on reported data. See comment for 1997 estimates. Current estimate of 64 percent changed from previous revision value of 85 percent.

2009: Estimate based on reported data. See comment for 1997 estimates. Data quality self-assessment conducted in 12 provinces found instances of over-

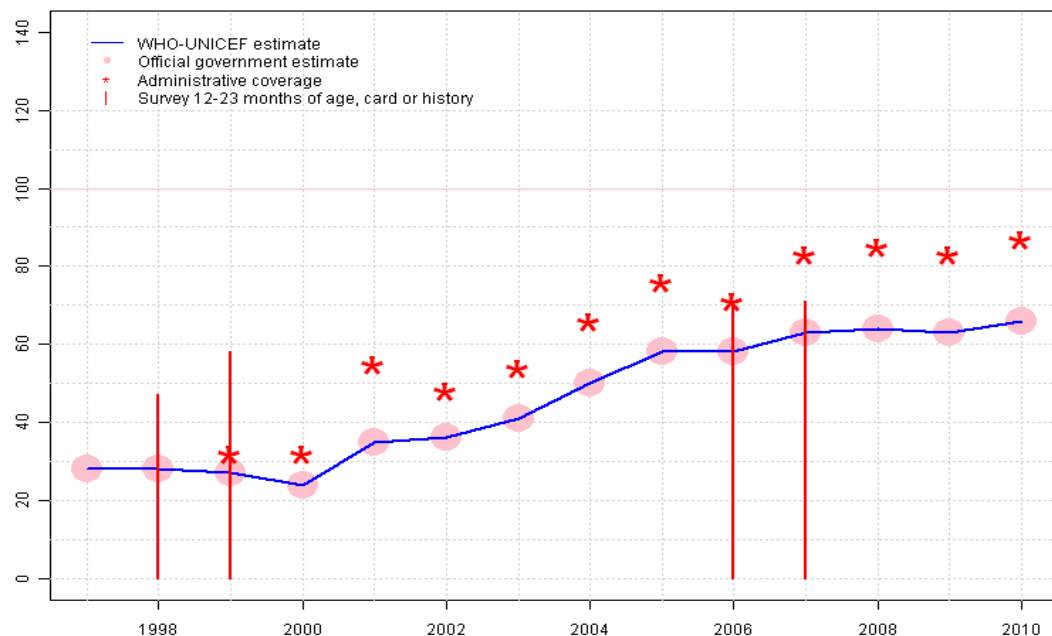
Afghanistan - DTP3

reporting and errors in recording and reporting. Current estimate of 63 percent changed from previous revision value of 83 percent.

2010: Estimate based on reported data. See comment for 1997 estimates. Data quality self-assessment conducted in 22 provinces found instances of over-reporting and errors in recording and reporting.

Afghanistan - Pol3

AFG - Pol3



	1997	1998	1999	2000	2001	2002	2003	2004	2005	2006	2007	2008	2009	2010
Estimate	28	28	27	24	35	36	41	50	58	58	63	64	63	66
Official	28	28	27	24	35	36	41	50	58	58	63	64	63	66
Administrative	NA	NA	32	32	55	48	54	66	76	71	83	85	83	87
Survey	NA	47	58	NA	NA	NA	NA	NA	NA	70	71	NA	NA	NA

Description:

- 1997: Legacy estimate. WHO and UNICEF estimate based on official government estimate. Trend in official government estimate follows trend in administrative data. Official government estimate is provisional pending results from the 2011 MICS and the EPI national survey. There is significant uncertainty in the provisional estimate due to uncertainty in denominator (last census in 1979) and difficulties in recording and reporting the number of vaccinations provided from some service providers. Current estimate of 28 percent changed from previous revision value of 37 percent.
- 1998: Estimate based on reported data. Survey not accepted. Survey includes immunizations given during national immunization days. See comment for 1997 estimates. Current estimate of 28 percent changed from previous revision value of 37 percent.
- 1999: Estimate based on reported data. Survey results not accepted. Sample size 223 less than 300. Survey not accepted. Survey includes immunizations given during national immunization days. See comment for 1997 estimates. Current estimate of 27 percent changed from previous revision value of 36 percent.
- 2000: Estimate based on reported data. See comment for 1997 estimates. Current estimate of 24 percent changed from previous revision value of 32 percent.
- 2001: Estimate based on reported data. See comment for 1997 estimates. Current estimate of 35 percent changed from previous revision value of 46 percent.
- 2002: Estimate based on reported data. See comment for 1997 estimates. Current estimate of 36 percent changed from previous revision value of 48 percent.
- 2003: Estimate based on reported data. See comment for 1997 estimates. Current estimate of 41 percent changed from previous revision value of 54 percent.
- 2004: Estimate based on reported data. See comment for 1997 estimates. Current estimate of 50 percent changed from previous revision value of 66 percent.
- 2005: Estimate based on reported data. See comment for 1997 estimates. Current estimate of 58 percent changed from previous revision value of 76 percent.
- 2006: Estimate based on reported data. Survey not accepted. Survey is not nationally representative and does not include 5 provinces. Card retention was 17 percent. See comment for 1997 estimates. Current estimate of 58 percent changed from previous revision value of 77 percent.
- 2007: Estimate based on reported data. Survey not accepted. Survey shows inconsistent results between levels of BCG and DTP coverage. See comment for 1997 estimates. Survey includes doses delivered during measles control campaign. Current estimate of 63 percent changed from previous revision value of 83 percent.
- 2008: Estimate based on reported data. See comment for 1997 estimates. Current estimate of 64 percent changed from previous revision value of 85 percent.
- 2009: Estimate based on reported data. See comment for 1997 estimates. Data

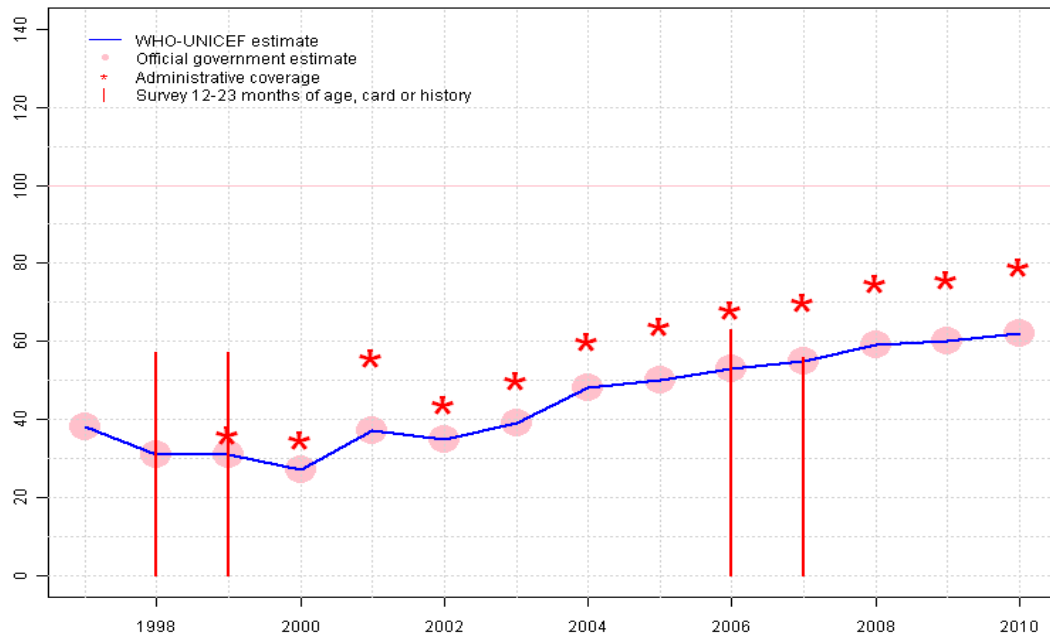
Afghanistan - Pol3

quality self-assessment conducted in 12 provinces found instances of over-reporting and errors in recording and reporting. Current estimate of 63 percent changed from previous revision value of 83 percent.

2010: Estimate based on reported data. See comment for 1997 estimates. Data quality self-assessment conducted in 22 provinces found instances of over-reporting and errors in recording and reporting.

Afghanistan - MCV

AFG - MCV



	1997	1998	1999	2000	2001	2002	2003	2004	2005	2006	2007	2008	2009	2010
Estimate	38	31	31	27	37	35	39	48	50	53	55	59	60	62
Official	38	31	31	27	37	35	39	48	50	53	55	59	60	62
Administrative	NA	NA	36	35	56	44	50	60	64	68	70	75	76	79
Survey	NA	57	57	NA	NA	NA	NA	NA	NA	63	56	NA	NA	NA

Description:

1997: Legacy estimate. WHO and UNICEF estimate based on official government estimate. Trend in official government estimate follows trend in administrative data. Official government estimate is provisional pending results from the 2011 MICS and the EPI national survey. There is significant uncertainty in the provisional estimate due to uncertainty in denominator (last census in 1979) and difficulties in recording and reporting the number of vaccinations provided from some service providers. Current estimate of 38 percent changed from previous revision value of 48 percent.

1998: Estimate based on reported data. Survey not accepted. Survey includes immunizations given during national immunization days. See comment for 1997 estimates. Current estimate of 31 percent changed from previous revision value of 40 percent.

1999: Estimate based on reported data. Survey results not accepted. Sample size 223 less than 300. Survey not accepted. Survey includes immunizations given during national immunization days. See comment for 1997 estimates. Current estimate of 31 percent changed from previous revision value of 40 percent.

2000: Estimate based on reported data. See comment for 1997 estimates. Current estimate of 27 percent changed from previous revision value of 35 percent.

2001: Estimate based on reported data. See comment for 1997 estimates. Current estimate of 37 percent changed from previous revision value of 47 percent.

2002: Estimate based on reported data. See comment for 1997 estimates. Current estimate of 35 percent changed from previous revision value of 44 percent.

2003: Estimate based on reported data. See comment for 1997 estimates. Current estimate of 39 percent changed from previous revision value of 50 percent.

2004: Estimate based on reported data. See comment for 1997 estimates. Current estimate of 48 percent changed from previous revision value of 61 percent.

2005: Estimate based on reported data. See comment for 1997 estimates. Current estimate of 50 percent changed from previous revision value of 64 percent.

2006: Estimate based on reported data. Survey not accepted. Survey is not nationally representative and does not include 5 provinces. Card retention was 17 percent. See comment for 1997 estimates. Current estimate of 53 percent changed from previous revision value of 68 percent.

2007: Estimate based on reported data. Survey not accepted. Survey shows inconsistent results between levels of BCG and DTP coverage. See comment for 1997 estimates. Survey includes doses delivered during measles control campaign. Current estimate of 55 percent changed from previous revision value of 70 percent.

2008: Estimate based on reported data. See comment for 1997 estimates. Current estimate of 59 percent changed from previous revision value of 75 percent.

2009: Estimate based on reported data. See comment for 1997 estimates. Data

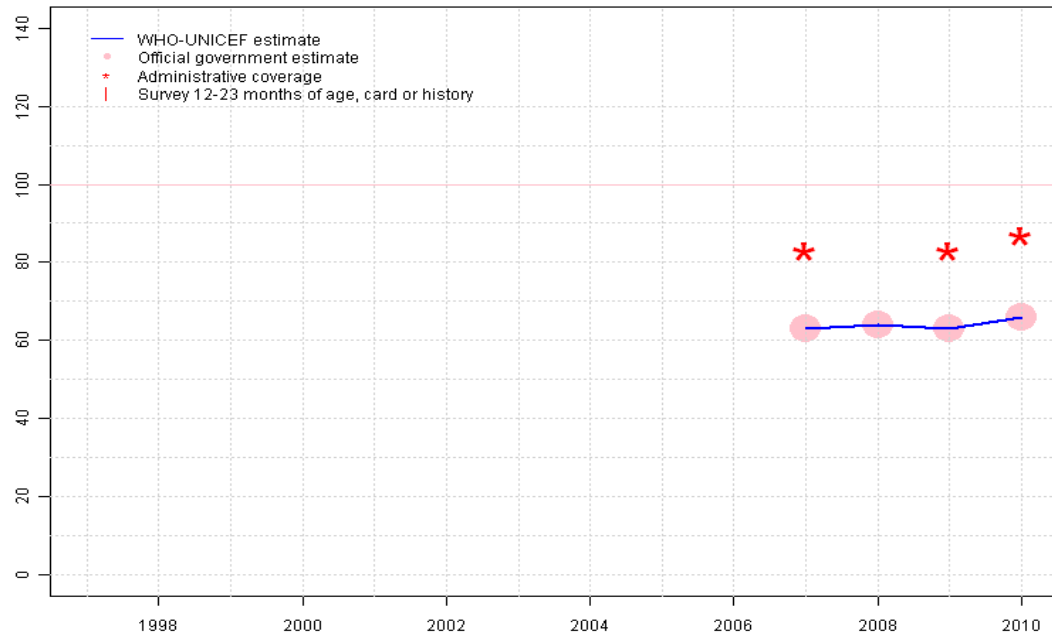
Afghanistan - MCV

quality self-assessment conducted in 12 provinces found instances of over-reporting and errors in recording and reporting. Current estimate of 60 percent changed from previous revision value of 76 percent.

2010: Estimate based on reported data. See comment for 1997 estimates. Data quality self-assessment conducted in 22 provinces found instances of over-reporting and errors in recording and reporting.

Afghanistan - HepB3

AFG - HepB3



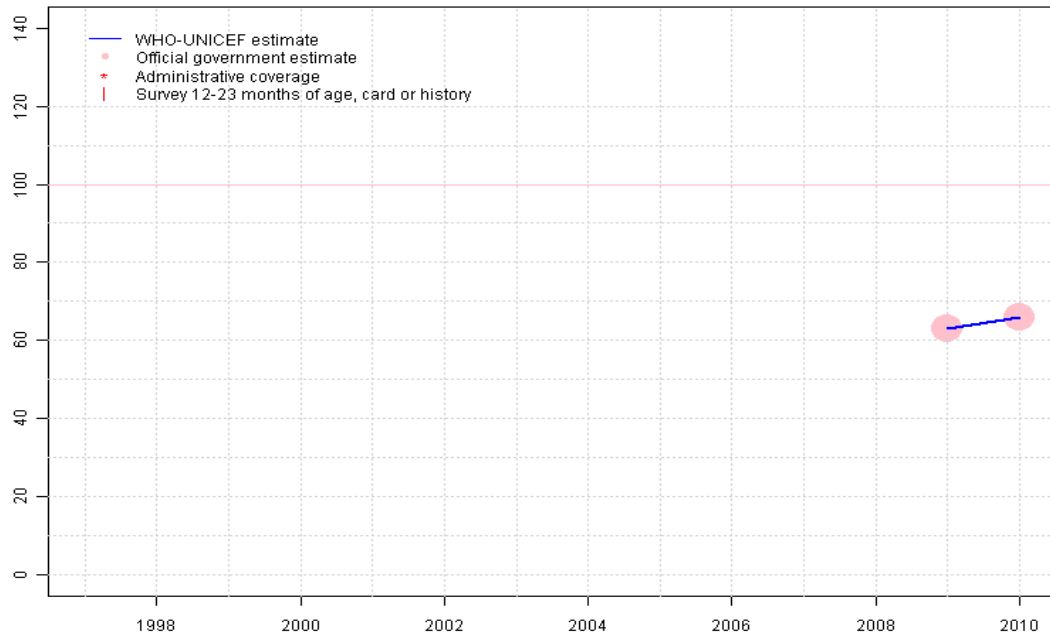
Description:

- 2007: Estimate based on reported data. HepB introduced in 2006. Reporting started in 2007. WHO and UNICEF estimate based on official government estimate. Trend in official government estimate follows trend in administrative data. Official government estimate lowered to reflect uncertainty in denominator (last census in 1985) and recording and reporting errors in number of vaccinations provided. Current estimate of 63 percent changed from previous revision value of 83 percent.
- 2008: Estimate based on reported data. See comment for 2007 estimates. Current estimate of 64 percent changed from previous revision value of 85 percent.
- 2009: Estimate based on reported data. See comment for 2007 estimates. Data quality self-assessment conducted in 12 provinces found instances of over-reporting and errors in recording and reporting. Current estimate of 63 percent changed from previous revision value of 83 percent.
- 2010: Estimate based on reported data. See comment for 2007 estimates. Data quality self-assessment conducted in 22 provinces found instances of over-reporting and errors in recording and reporting.

	1997	1998	1999	2000	2001	2002	2003	2004	2005	2006	2007	2008	2009	2010
Estimate	NA	NA	NA	NA	NA	NA	NA	NA	NA	NA	63	64	63	66
Official	NA	NA	NA	NA	NA	NA	NA	NA	NA	NA	63	64	63	66
Administrative	NA	NA	NA	NA	NA	NA	NA	NA	NA	NA	83	NA	83	87
Survey	NA	NA	NA	NA	NA	NA	NA	NA	NA	NA	NA	NA	NA	NA

Afghanistan - Hib3

AFG - Hib3



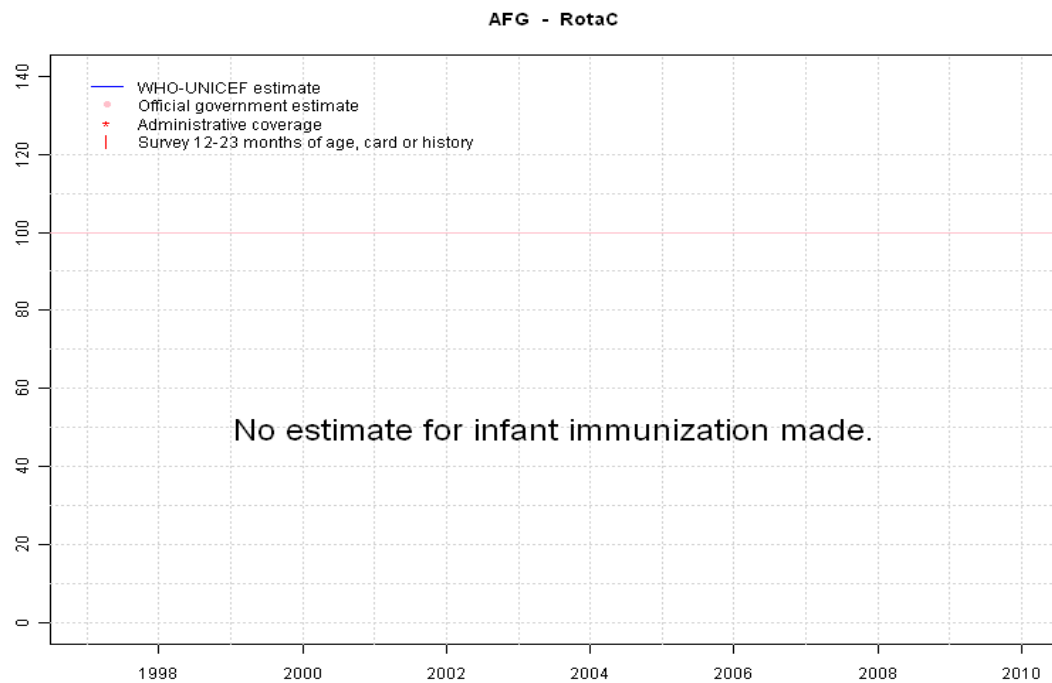
Description:

2009: Estimate based on reported data. Data quality self-assessment conducted in 12 provinces found instances of overreporting and errors in recording and reporting. Hib introduced in 2009 Vaccine presentation is DTP-HepB-Hib. WHO and UNICEF estimate based on official government estimate. Current estimate of 63 percent changed from previous revision value of 83 percent.

2010: Estimate based on reported data. See comment for 2009 estimates. Data quality self-assessment conducted in 22 provinces found instances of overreporting and errors in recording and reporting.

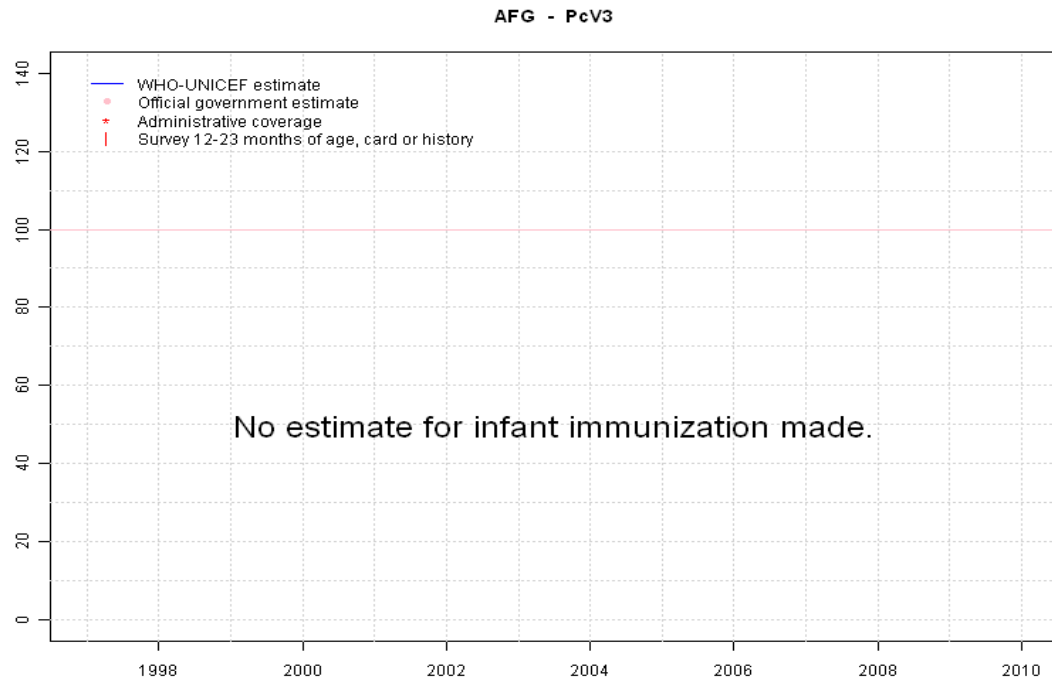
	1997	1998	1999	2000	2001	2002	2003	2004	2005	2006	2007	2008	2009	2010
Estimate	NA	NA	NA	NA	NA	NA	NA	NA	NA	NA	NA	NA	63	66
Official	NA	NA	NA	NA	NA	NA	NA	NA	NA	NA	NA	NA	63	66
Administrative	NA	NA	NA	NA	NA	NA	NA	NA	NA	NA	NA	NA	NA	NA
Survey	NA	NA	NA	NA	NA	NA	NA	NA	NA	NA	NA	NA	NA	NA

Afghanistan - RotaC



	1997	1998	1999	2000	2001	2002	2003	2004	2005	2006	2007	2008	2009	2010
Estimate	NA	NA	NA	NA	NA	NA	NA	NA	NA	NA	NA	NA	NA	NA
Official	NA	NA	NA	NA	NA	NA	NA	NA	NA	NA	NA	NA	NA	NA
Administrative	NA	NA	NA	NA	NA	NA	NA	NA	NA	NA	NA	NA	NA	NA
Survey	NA	NA	NA	NA	NA	NA	NA	NA	NA	NA	NA	NA	NA	NA

Afghanistan - PcV3



	1997	1998	1999	2000	2001	2002	2003	2004	2005	2006	2007	2008	2009	2010
Estimate	NA	NA	NA	NA	NA	NA	NA	NA	NA	NA	NA	NA	NA	NA
Official	NA	NA	NA	NA	NA	NA	NA	NA	NA	NA	NA	NA	NA	NA
Administrative	NA	NA	NA	NA	NA	NA	NA	NA	NA	NA	NA	NA	NA	NA
Survey	NA	NA	NA	NA	NA	NA	NA	NA	NA	NA	NA	NA	NA	NA

Afghanistan - survey details

2007 National Risk and Vulnerability Assessment 2007/8: A profile of Afghanistan

Vaccine	Confirmation method	Coverage	Age cohort	Sample	Cards seen
BCG	Card or History	74	12-23 m	4520	34
DTP3	Card or History	43	12-23 m	4520	34
MCV	Card or History	56	12-23 m	4520	34
Pol3	Card or History	71	12-23 m	4520	34

2006 Afghanistan Health Survey 2006

Vaccine	Confirmation method	Coverage	Age cohort	Sample	Cards seen
BCG	Card or History	70	12-23 m	1665	17
DTP1	Card or History	60	12-23 m	1665	17
DTP3	Card or History	35	12-23 m	1665	17
MCV	Card or History	63	12-23 m	1665	17
Pol3	Card or History	70	12-23 m	1665	17

2002 Moving Beyond 2 decades of war: Progress of Provinces

Vaccine	Confirmation method	Coverage	Age cohort	Sample	Cards seen
DTP3	n.a.	30	12-23 m	0	61
Pol3	n.a.	51	12-23 m	0	61

1999 Afghanistan Multiple Indicator Cluster Survey, 2000, East of Afghanistan

Vaccine	Confirmation method	Coverage	Age cohort	Sample	Cards seen
---------	---------------------	----------	------------	--------	------------

BCG	Card or History	78	12-23 m	223	0
DTP1	Card or History	71	12-23 m	223	0
DTP3	Card or History	45	12-23 m	223	0
MCV	Card or History	57	12-23 m	223	0
Pol1	Card or History	88	12-23 m	223	0
Pol3	Card or History	58	12-23 m	223	0

1998 EPI Coverage Situation in Women and Children of Afghanistan, Report of Post NID's, Routine Coverage and Acceleration Campaign Survey in Afghanistan (1999)

Vaccine	Confirmation method	Coverage	Age cohort	Sample	Cards seen
BCG	Card or History	70	12-23 m	1681	48
BCG	Card	40	12-23 m	1681	48
BCG	History	30	12-23 m	1681	48
DTP1	Card or History	76	12-23 m	1681	48
DTP1	Card	46	12-23 m	1681	48
DTP1	History	29	12-23 m	1681	48
DTP3	Card	27	12-23 m	1681	48
DTP3	History	20	12-23 m	1681	48
DTP3	Card or History	47	12-23 m	1681	48
MCV	History	20	12-23 m	1681	48
MCV	Card or History	57	12-23 m	1681	48
MCV	Card	37	12-23 m	1681	48
Pol1	Card or History	76	12-23 m	1681	48
Pol1	History	29	12-23 m	1681	48
Pol1	Card	46	12-23 m	1681	48
Pol3	Card	27	12-23 m	1681	48
Pol3	History	20	12-23 m	1681	48
Pol3	Card or History	47	12-23 m	1681	48

Further information and estimates for 1980-1996 are available at:

http://www.childinfo.org/immunization_countryreports.html

http://www.who.int/immunization_monitoring/routine/immunization_coverage/en/index4.html

Afghanistan

WHO/UNICEF Estimates of Protection at Birth (PAB) against tetanus

In countries where tetanus is recommended for girls and women coverage is usually reported as "TT2+", i.e. the proportion of (pregnant) women who have received their second or superior TT dose in a given year. TT2 + coverage, however, can under-represent the actual proportion of births that are protected against tetanus as it does not include women who have previously received protective doses, women who received one dose without documentation of previous doses, and women who received doses in TT (or Td) supplemental immunization activities (SIA). In addition, girls who have received DTP in their childhood and are entering childbearing age, may be protected with TT booster doses.

WHO and UNICEF have developed a model that takes into account the above scenarios, and calculates the proportion of births in a given year that can be considered as having been protected against tetanus - "Protection at Birth".

In this model, annual cohorts of women are followed from infancy through their life. A proportion receive DTP in infancy (estimated based on the WHO-UNICEF estimates of DTP3 coverage). In addition some of these women also receive TT through routine services when they are pregnant and may also receive TT during SIAs. The model also adjusts reported data, taking into account coverage patterns in other years, and/or results available through surveys. The duration of protection is then calculated, based on WHO estimates of the duration of protection by doses ever received. The proportion of births that are protected against tetanus as a result of maternal immunization reflects the tetanus immunization received by the mother throughout her life rather than simply the TT immunizations received during the current pregnancy.

Year	PAB coverage estimate (%)
1997	19
1998	21
1999	28
2000	32
2001	47
2002	52
2003	62
2004	95
2005	96
2006	95
2007	84
2008	83
2009	89
2010	79

¹ This model is described in: Griffiths U., Wolfson L., Quddus A., Younus M., Hafiz R.. Incremental cost-effectiveness of supplementary immunization activities to prevent neo-natal tetanus in Pakistan. Bulletin of the World Health Organization 2004; 82:643-651.