



WHO Study on global AGEing and adult health (*SAGE*)

Ageing in Developing Countries: Building Bridges for an Integrated Research Agendas

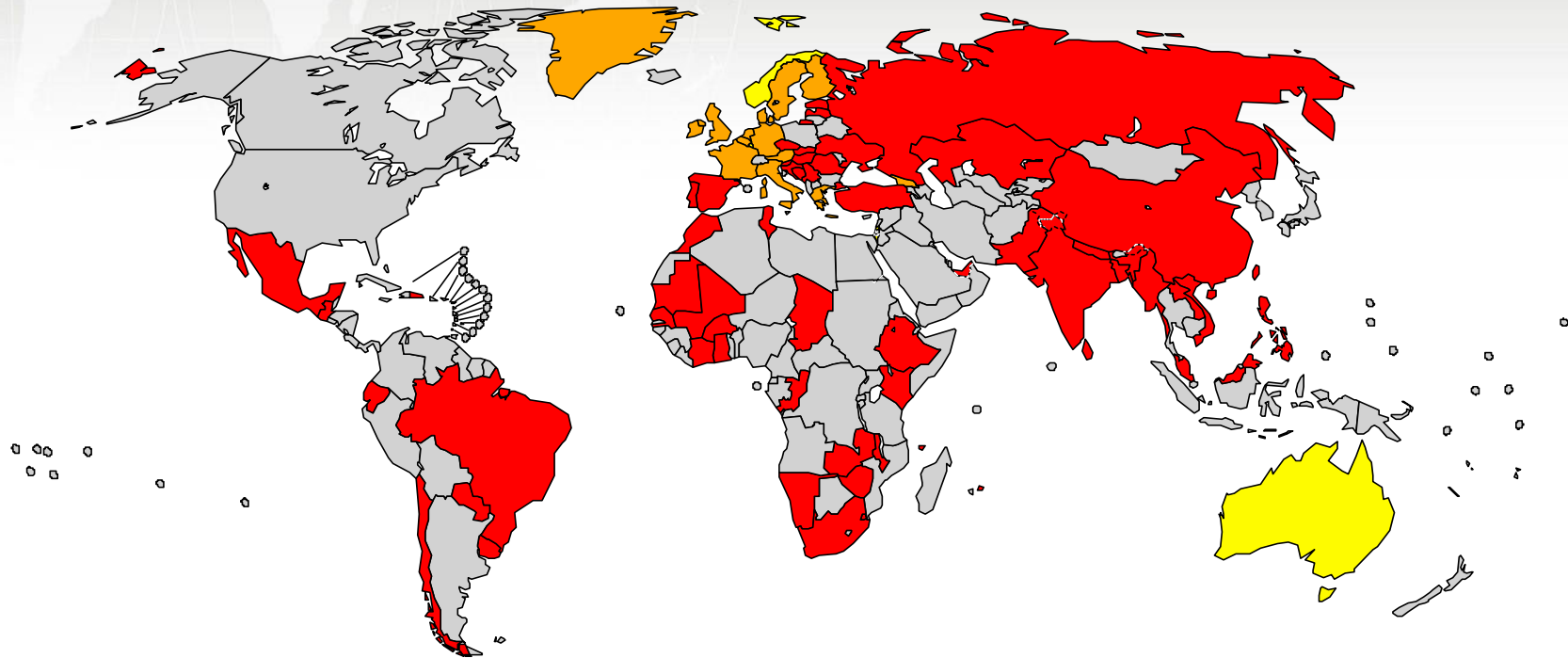
Somnath Chatterji
Health Statistics and Informatics

Background




- Multi-country Survey Study
- World Health Survey
- Study on Global Ageing and Adult Health (SAGE)
- Nationally representative samples using multi-stage cluster design

WHO - World Health Surveys

WHS 2002/03



70 SURVEYS in 70 countries

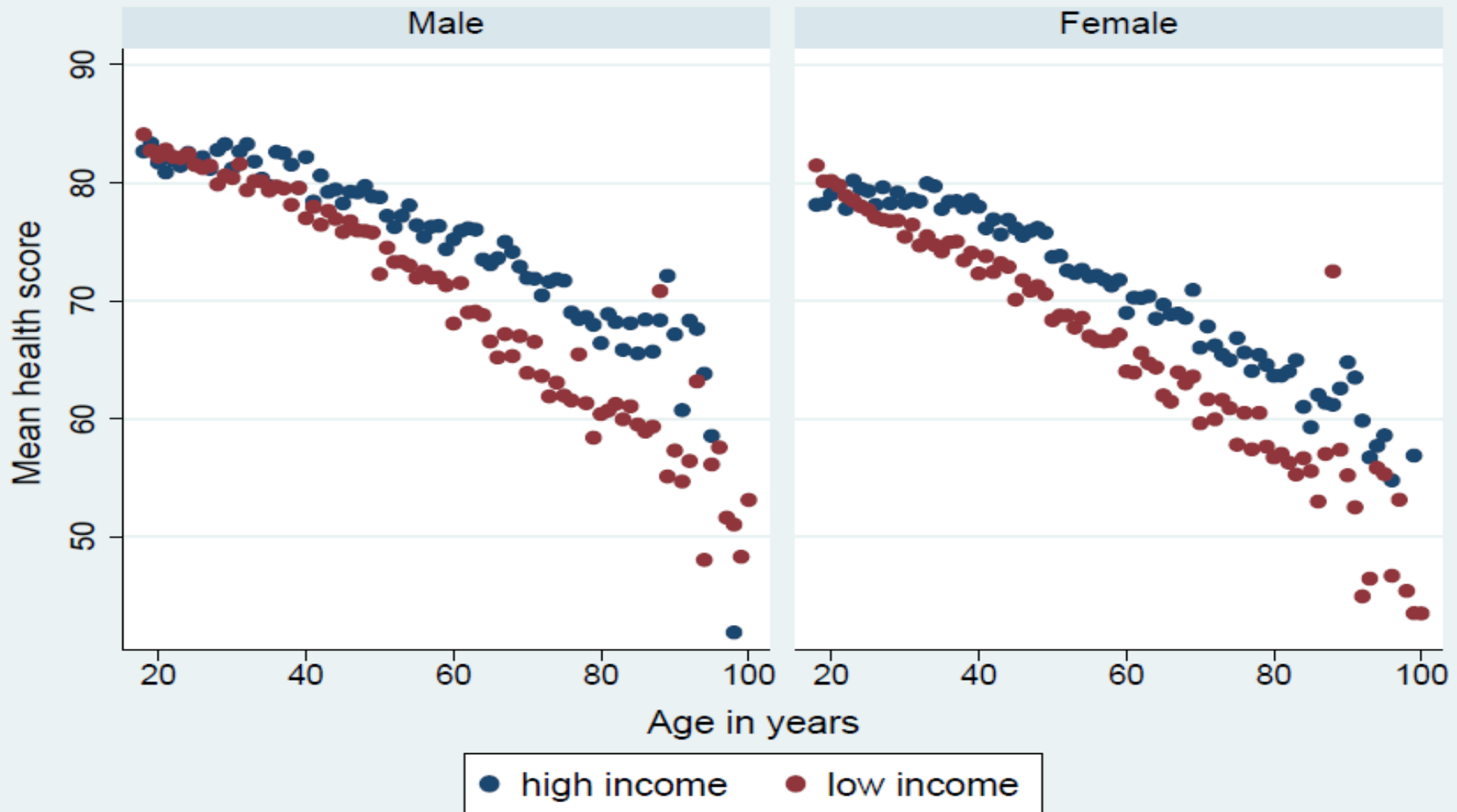
	Household - long :	53
	Household - short:	13
	CATI :	4

The boundaries and names shown and the designations used on this map do not imply the expression of any opinion whatsoever on the part of the World Health Organization concerning the legal status of any country, territory, city or area or of its authorities, or concerning the delimitation of its frontiers or boundaries. Dotted lines on maps represent approximate border lines for which there may not yet be full agreement.

© WHO 2002. All rights reserved

Declines in health by country groups

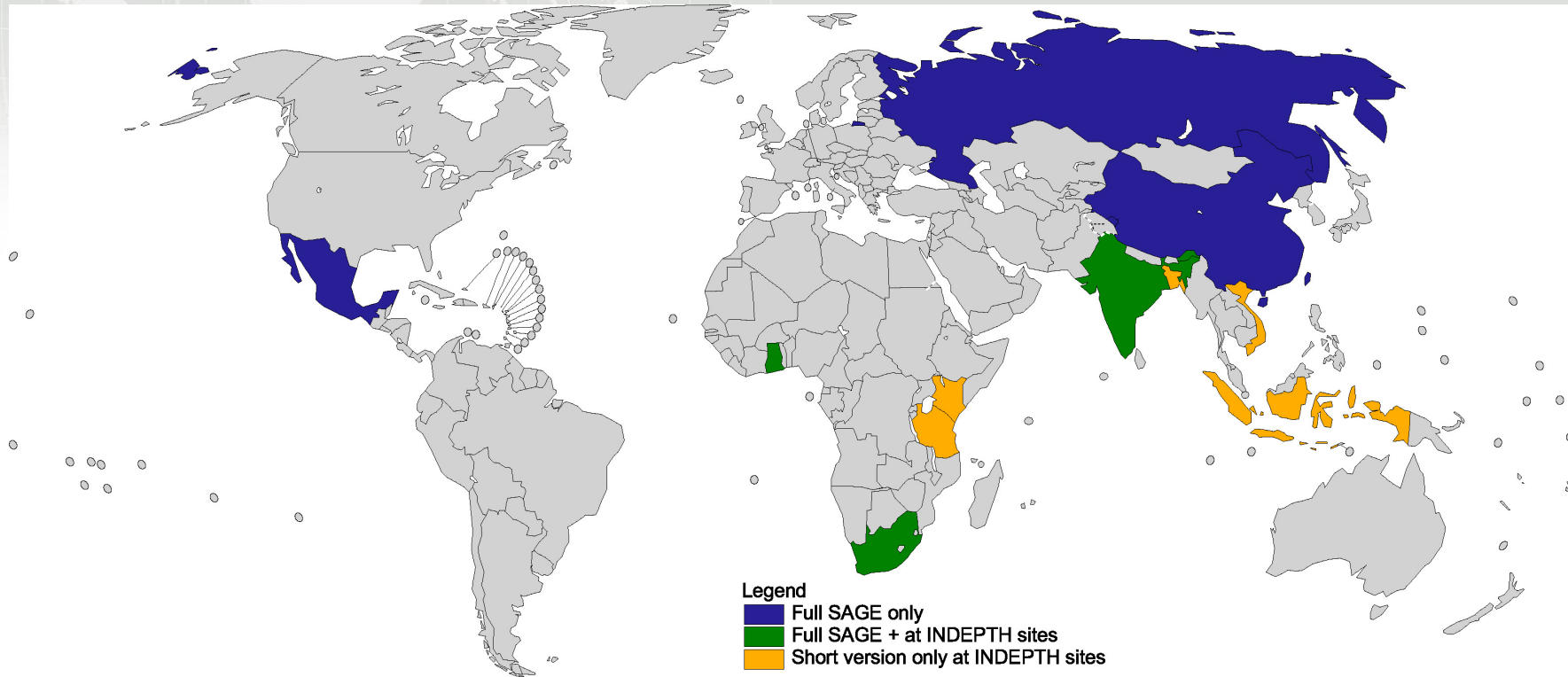
WHS



SAGE samples

Characteristics	China	India	Mexico	Russia	South Africa	Ghana
Total subject (N)	14,785	12,198	2,734	3,418	4,227	5,573
Sex (%)						
Men	47.0	38.7	38.3	37.1	42.5	52.8
Women	53.0	61.3	61.7	62.9	57.5	47.3
Age Group (%)						
18-49	11.0	41.6	15.6	8.5	9.1	15.8
50-59	39.5	26.2	15.8	34.1	40.1	33.1
60-69	26.3	19.9	34.2	24.9	29.2	23.6
70-79	18.5	9.4	22.6	23.7	15.7	19.3
80+	4.7	2.9	11.8	8.8	5.9	8.3
Highest education level (%)						
Completed college/university	6.2	10.8	6.4	20.8	7.3	7.4
Completed high school	17.8	19.5	4.8	50.7	10.7	34.7
Completed secondary	28.0	22.7	13.4	18.9	19.5	11.2
Completed primary	25.4	27.9	28.6	7.8	31.1	25.2
Less than primary	22.6	19.1	46.8	1.9	31.4	21.6
Current marital status (%)						
Not married	15.8	22.4	36.5	42.5	47.0	40.0
Married	84.2	77.6	63.5	57.5	53.0	60.0
Always live in the area (%)	55.7	56.7	75.7	53.6	71.3	65.9
Currently working (%)	50.6	64.2	53.5	36.8	32.3	73.2

SAGE - INDEPTH



- China
- India
- Russia

- Mexico
- South Africa
- Ghana

- Kenya
- Tanzania
- Bangladesh

- Viet Nam
- Indonesia

The boundaries and names shown and the designations used on this map do not imply the expression of any opinion whatsoever on the part of the World Health Organization concerning the legal status of any country, territory, city or area or of its authorities, or concerning the delimitation of its frontiers or boundaries. Dotted lines on maps represent approximate border lines for which there may not yet be full agreement. © WHO 2005. All rights reserved

SAGE

Objectives

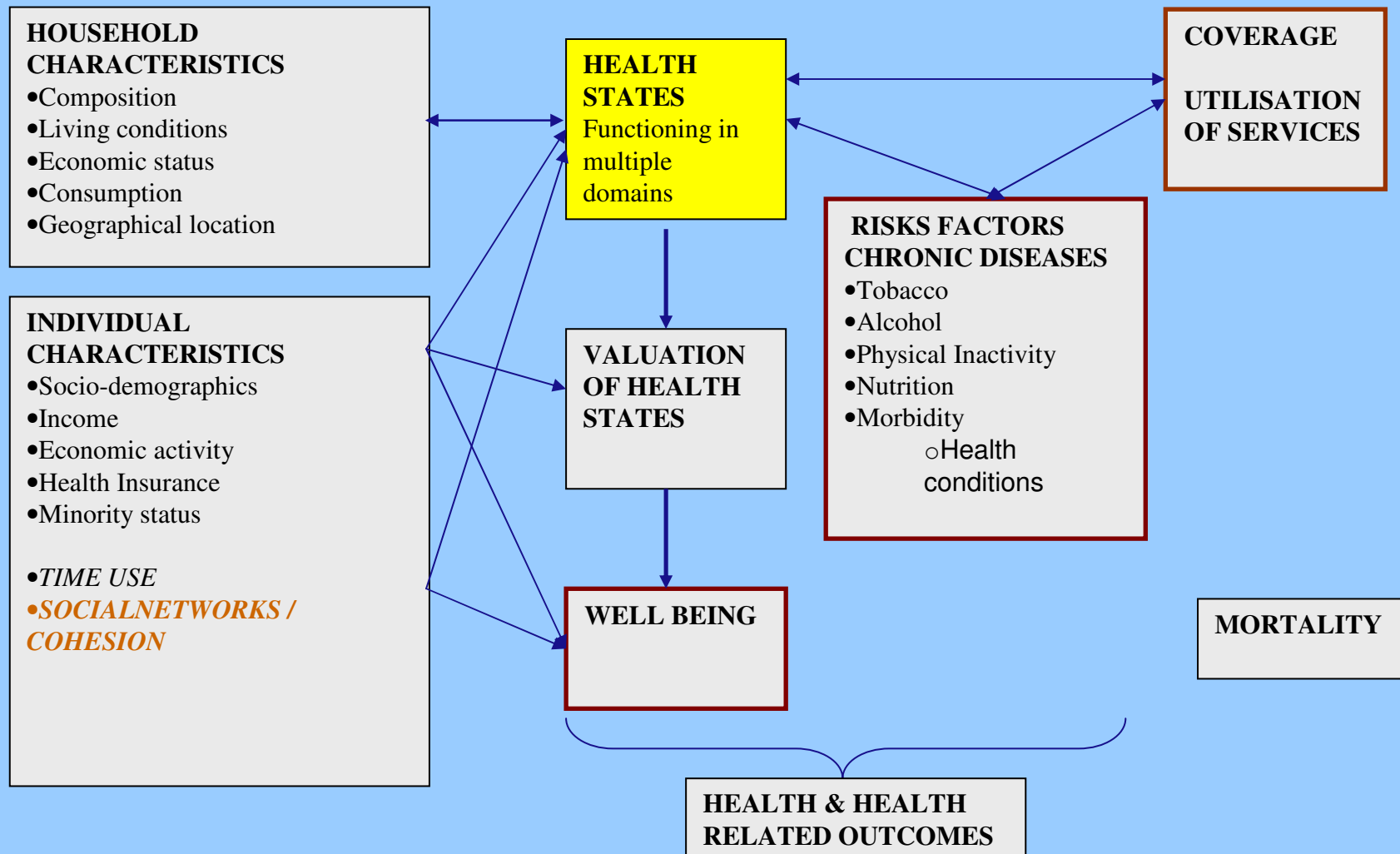
- To obtain reliable, valid and comparable data on levels of health on a range of key domains for older adult populations
- To examine patterns and dynamics of age-related changes in health using a longitudinal design
- To supplement and cross-validate self-reported measures of health and the anchoring vignette approach to improving comparability of self-reported measures, through measured performance tests for selected health domains
- To collect data on health examinations and biomarkers to improve reliability of data on morbidity, risk factors and monitor effect of interventions

SAGE

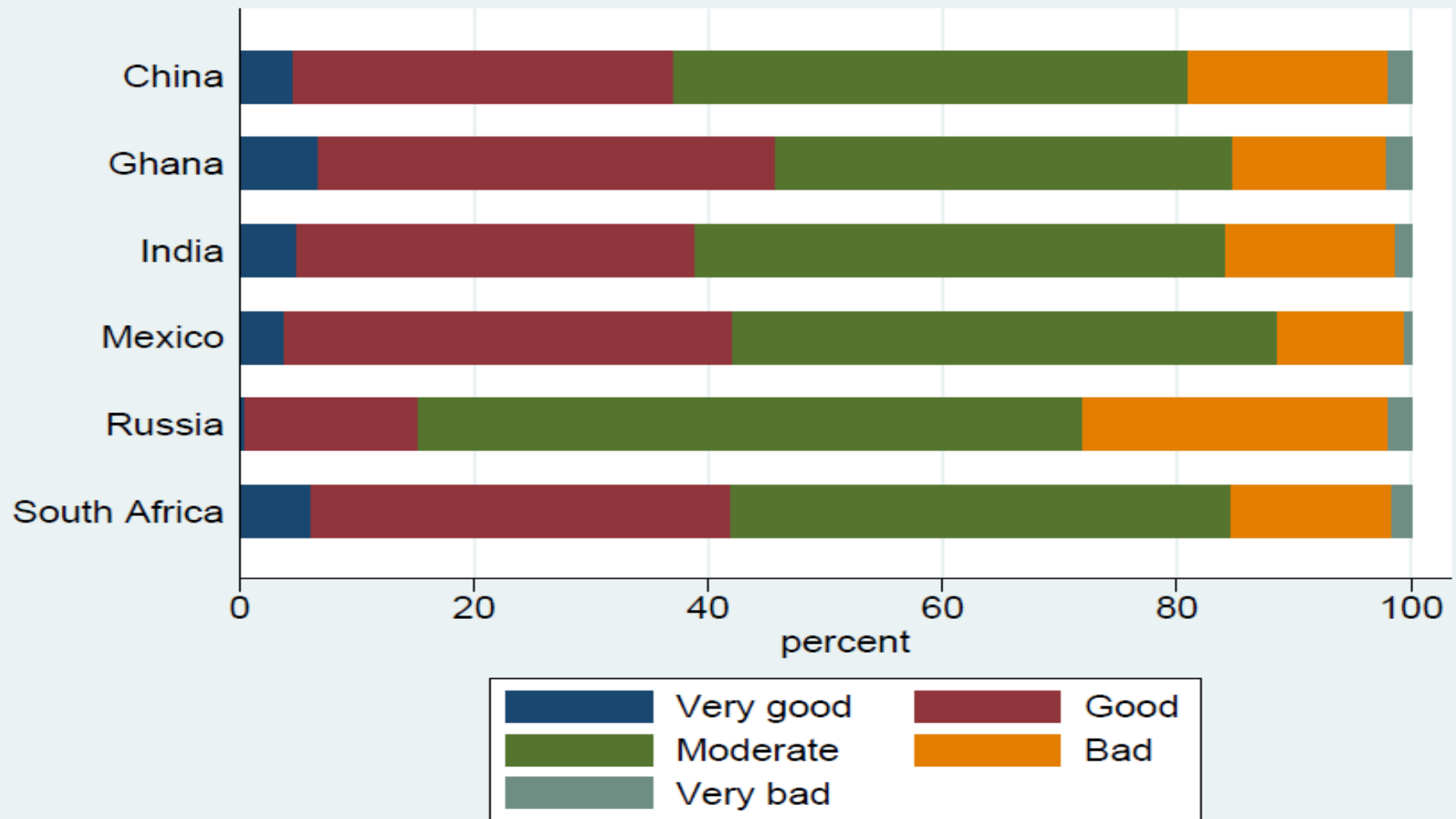
Objectives (contd.)

- Follow-up to study intermediate outcomes, monitor trends, examine transitions and life events, and address relationships between determinants and health and health-related outcomes;
- To develop a mechanism to link survey data to data from demographic surveillance sites - INDEPTH
- To build linkages with other national and cross-national ageing studies
- To provide a public-access information base for an evidence based policy debate amongst all stakeholders

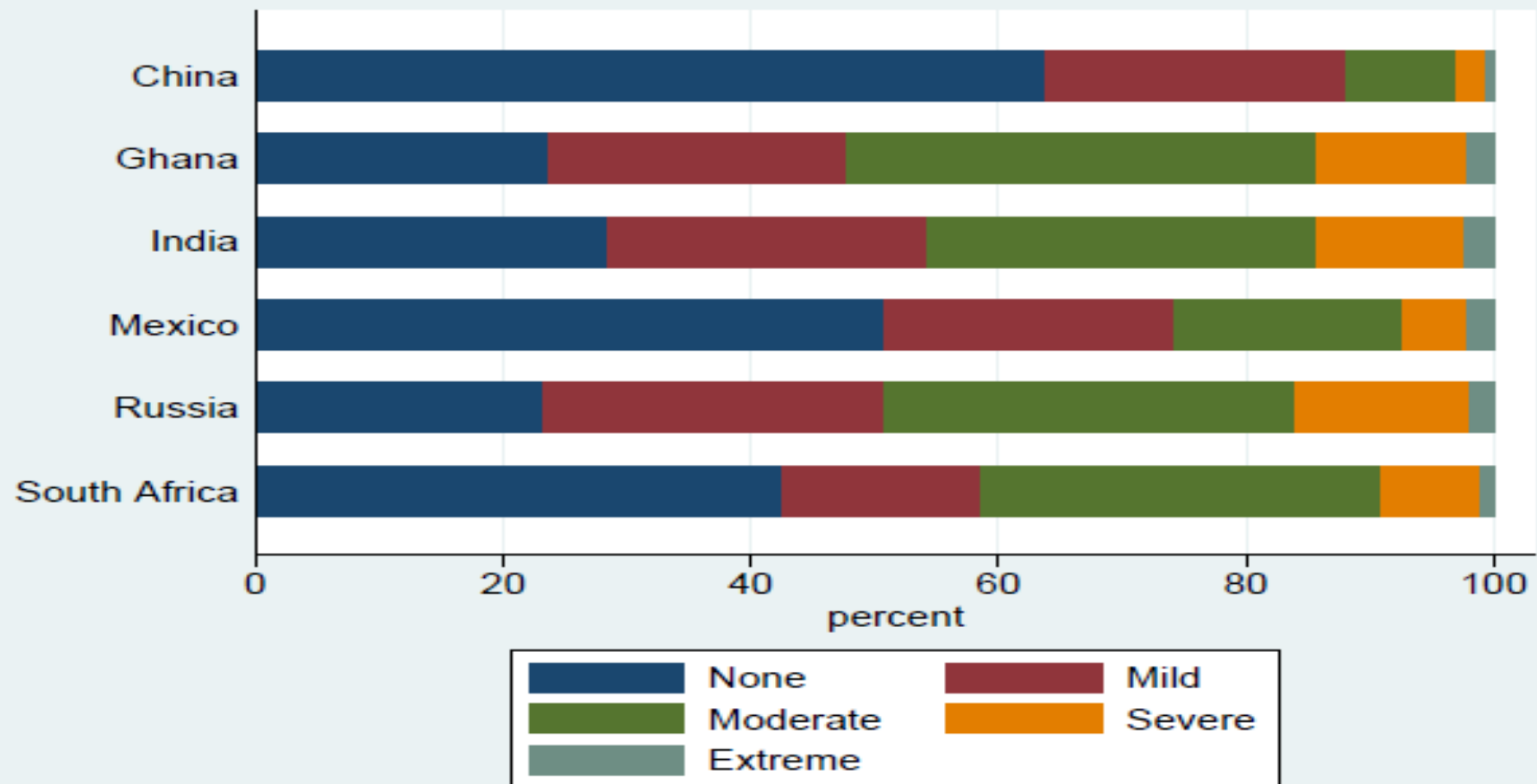
Framework



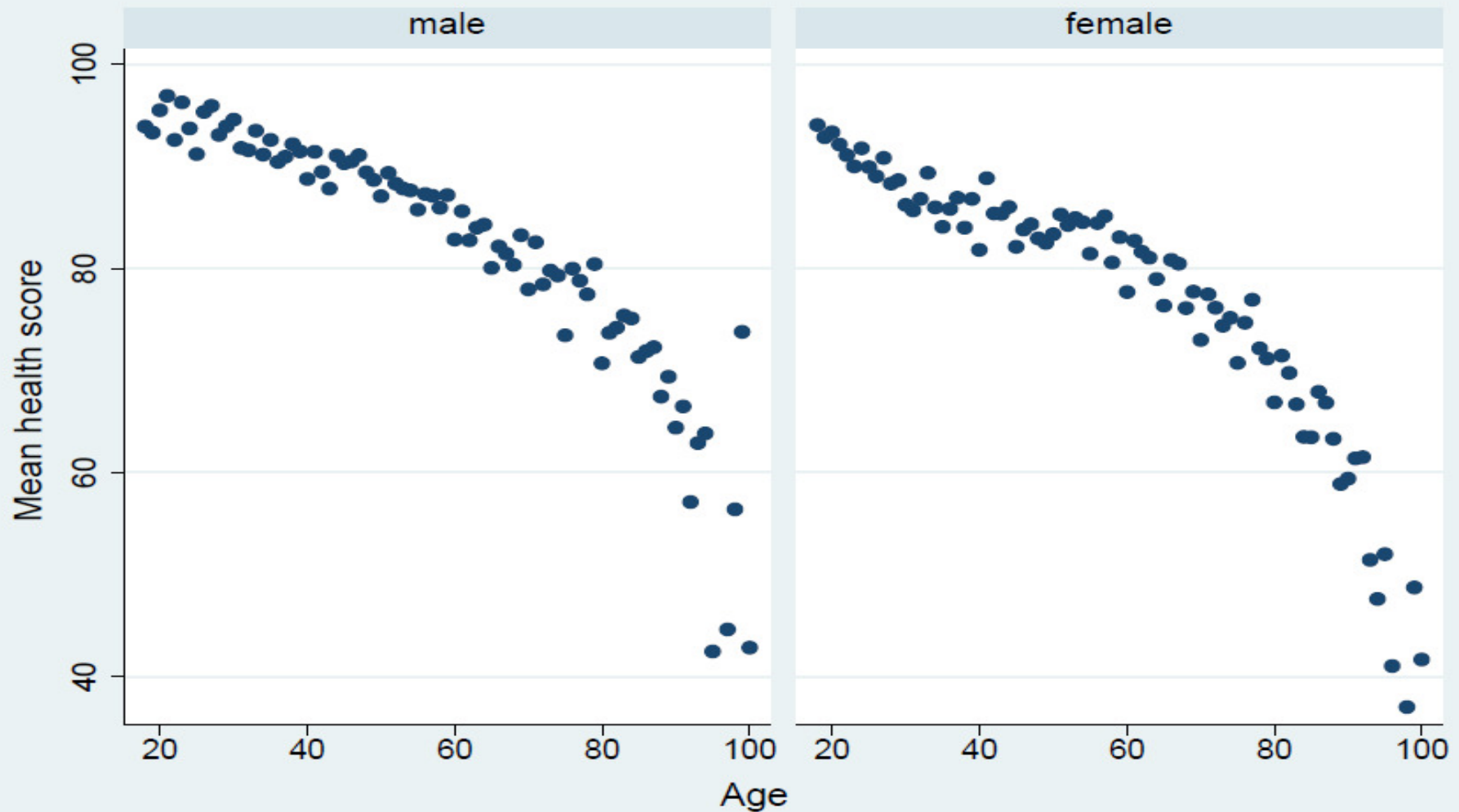
Self reported overall health



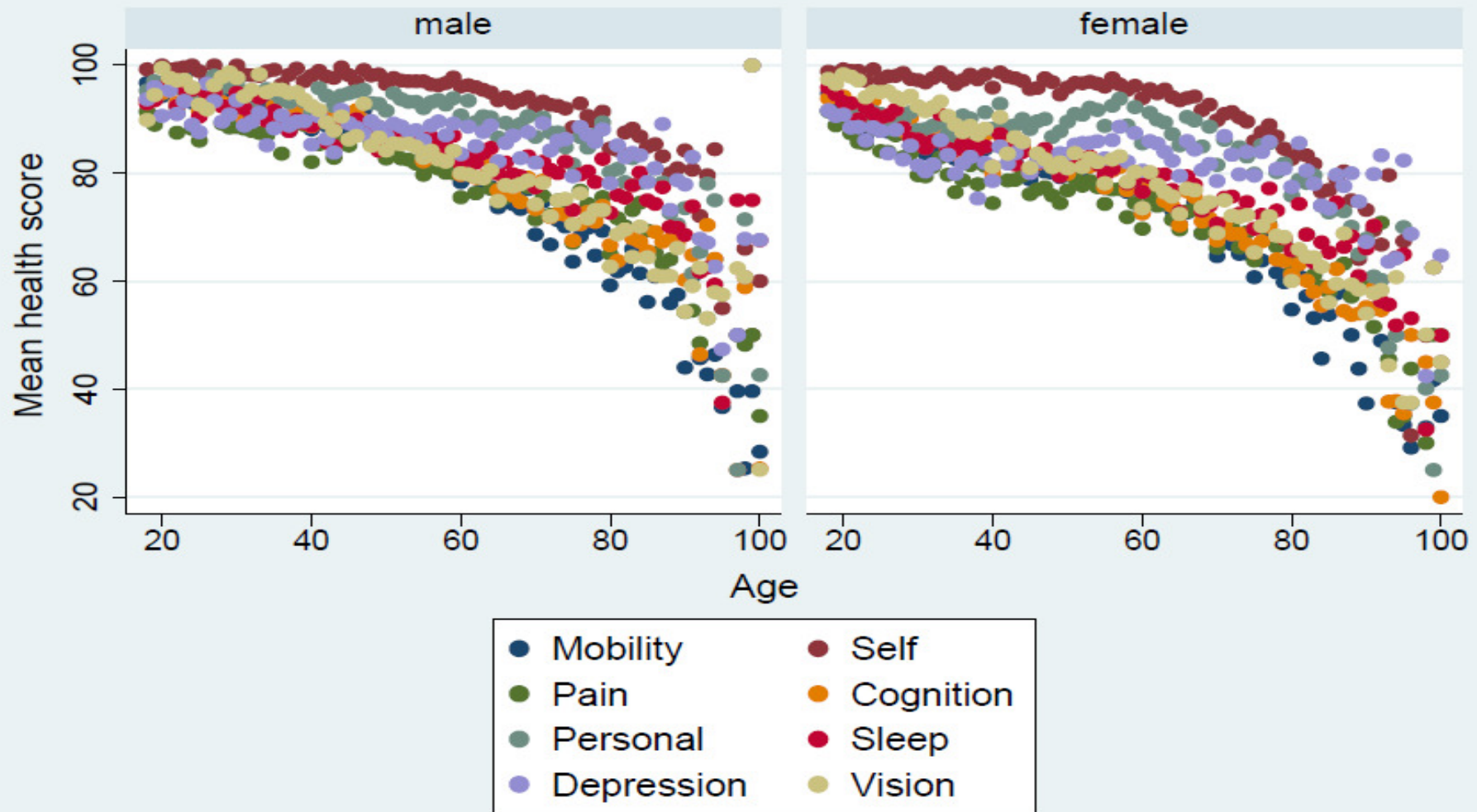
Difficulties with day to day activities



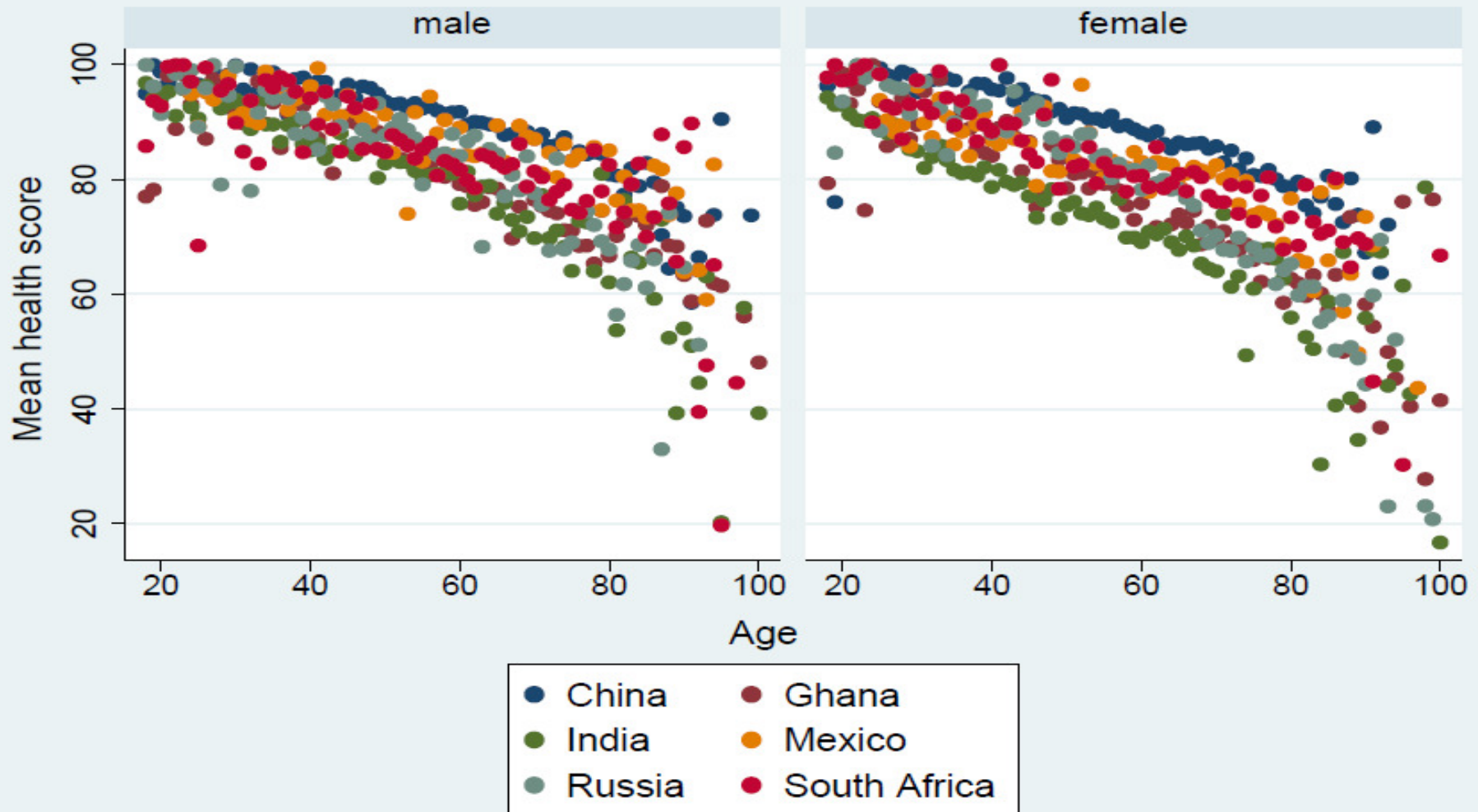
Declines in health state by sex



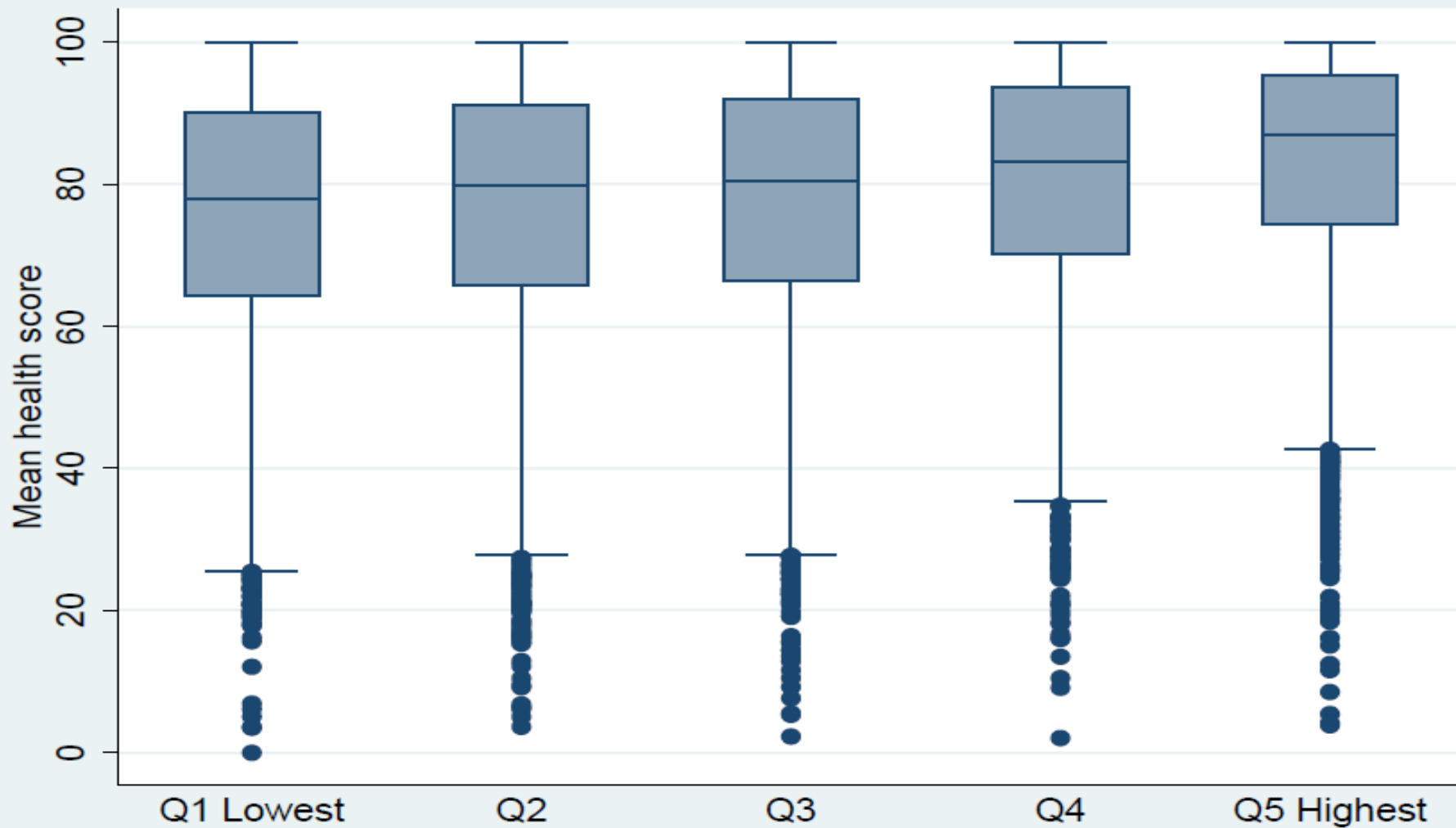
Declines in health state by domain



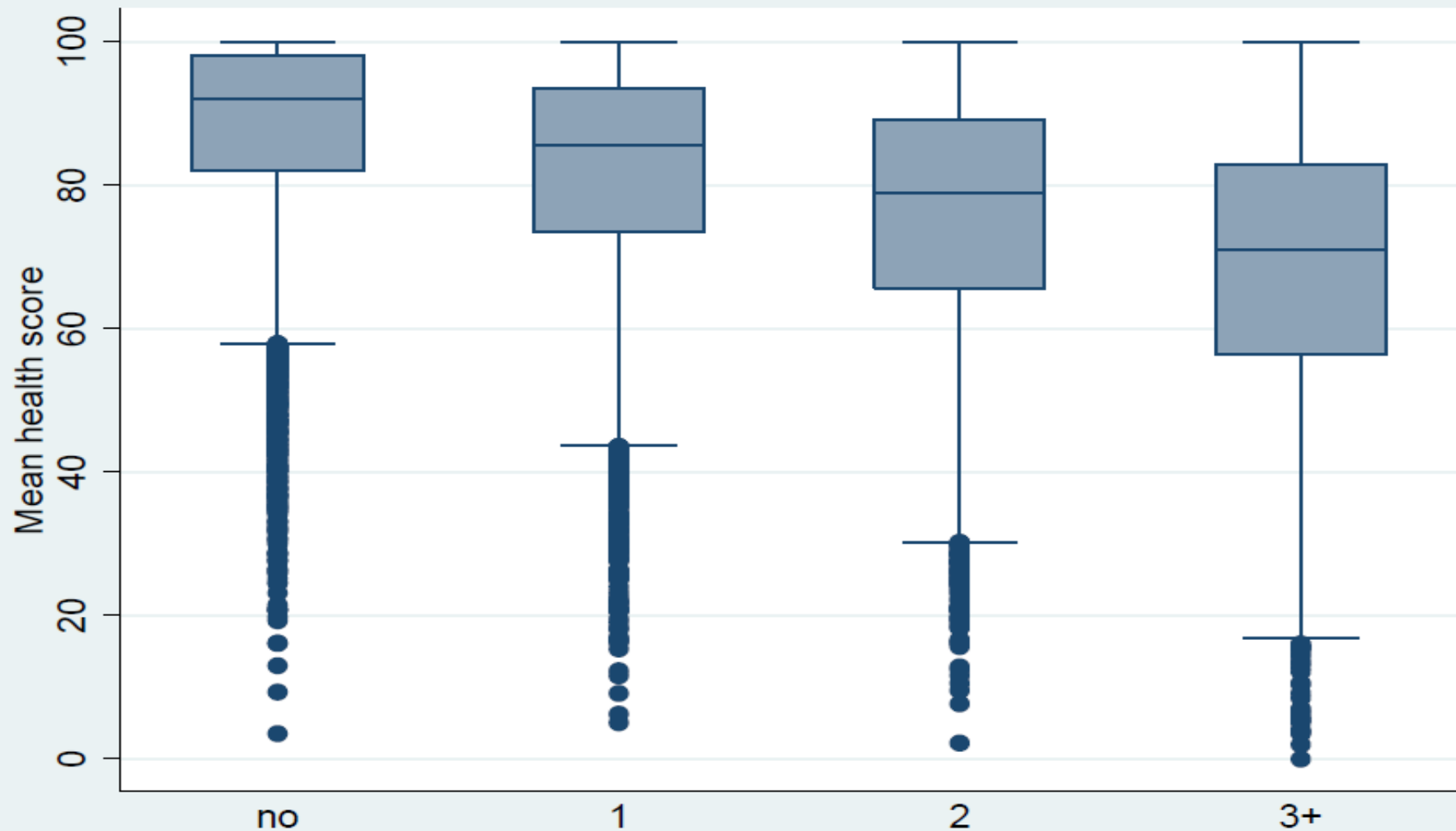
Declines in health by country



Health and wealth quintiles



Declines in health and chronic diseases



Current Status

- Data collection completed at 4 sites; in progress in 2 other sites; expected to be completed at all sites by July 2010
- Data collection completed at all eight INDEPTH sites
- Data sets in public domain later in 2010

Future directions

- Longitudinal follow up
- Improve understanding of future fatal and non-fatal health outcomes
- determinants
- Continue to develop methods to improve measurement, e.g., health states, self reported morbidity, risk factors, effect of interventions
- Develop standard survey modules
- Link survey to demographic surveillance data – INDEPTH
- Promote use of methods in other international studies
- Create a data collection platform to monitor health trends and determinants over time