

WHO Conference on Health Aspects of Tsunami Disaster in Asia

**Phuket, Thailand
4–6 May 2005**



**World Health
Organization**

Mental and Psychosocial Aspects

Dr. Vijay Chandra
Regional Advisor, Mental Health
WHO SEARO



Regional Perspective

- Some similarities but many differences between affected populations
- Responses varied between countries at all levels



Regional Perspective

- Response during the early phase and recovery phase
- Differentiate between mental health and psychosocial support



Maldives

- National Disaster Management Centre with Psychosocial Unit
- Well organized community-based campaign (Emotional Support Brigade)
- Facilitated by UNFPA, UNICEF and Red Cross
- WHO provided training material for physicians and development of psychosocial needs assessment instrument



Sri Lanka

- Psychosocial support group established by the President of Sri Lanka, accorded high priority
- Diverse organizations providing “psychosocial support”, no coordination
- Even existing backup mental health services, not being optimally utilized



Thailand

- Outstanding response
- Needs to be studied in detail
- Village health volunteers reach each and every family providing psychosocial support



India

- Government and technical experts quick to respond
- Strong community-based approach



Indonesia

- Mental health services being supported
- Response in the community needs to be studied further



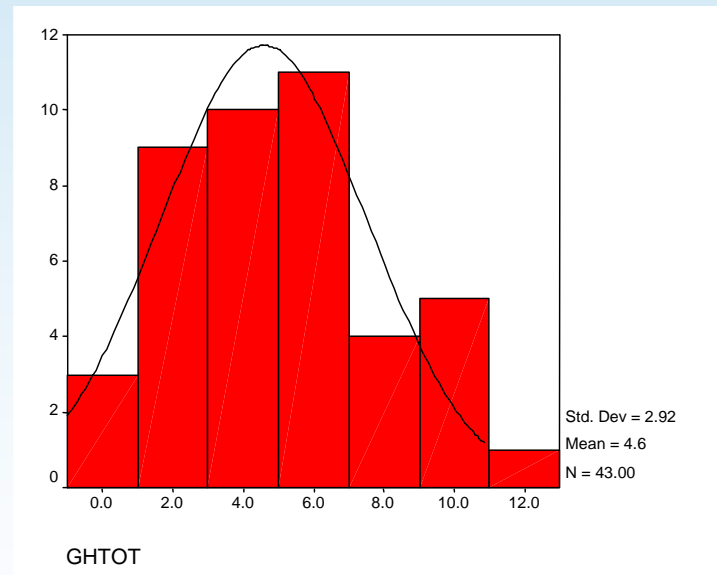
Needs Assessment

- Is this needed?
- How should this be done:
 - Rapid assessment vs systematic assessment
 - Qualitative vs quantitative assessment
- Need for IT backup



Needs Assessment

- Development/adaptation of instrument in Maldives



Coordination

- Very difficult to manage other agencies
- WHO must provide technical leadership



Impact of WHO work

- Must measure impact not just process



Mental and Psychosocial Aspects

THANK YOU

