

# TTVI Operations, Thailand

Disaster Victim Identification Response  
to Thailand following the Indian Ocean  
Tsunami of 26 December 2004

Federal Agent Karl Kent  
Joint Chief of Staff  
TTVI Operations, Thailand

# Overview

- Brief Background
- Current Status
- Critical Issues



# Background

## Early Operations

- 26 Dec: Thai DVI teams commence operations in Krabi, Phuket, Phang Nga provinces.
- 27 Dec: International DVI teams begin arriving, un-coordinated effort.
- 30 Dec: International DVI Co-ordination Centre established RTP HQ Phuket.
- Temporary mortuary facilities established at 4 sites across 3 provinces
- Complex operating environment
- Dual approach "Thai" and "Non-Thai"
- Efforts to establish a fully integrated response
- 12 Jan: TTVI Established
- Implementation of latest technologies to enable reconciliation of AM/PM records at TTVI IMC, Phuket.



# TTVI Mission

- To identify victims of the Thai tsunami and release these identified deceased for repatriation to their families in accordance with the Thai law, Interpol DVI Guidelines and TTVI Protocols.





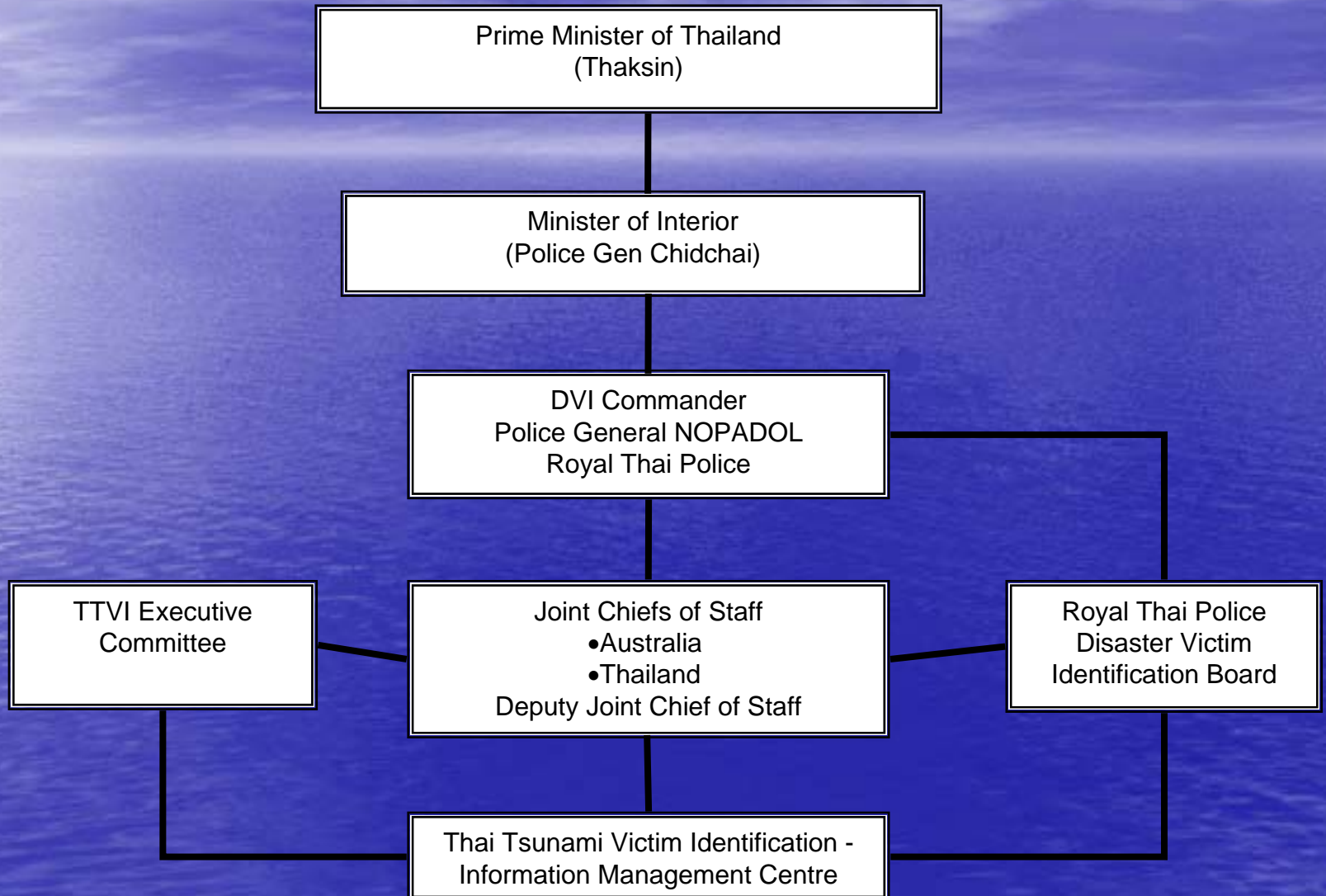
# Background

## Operational Structure

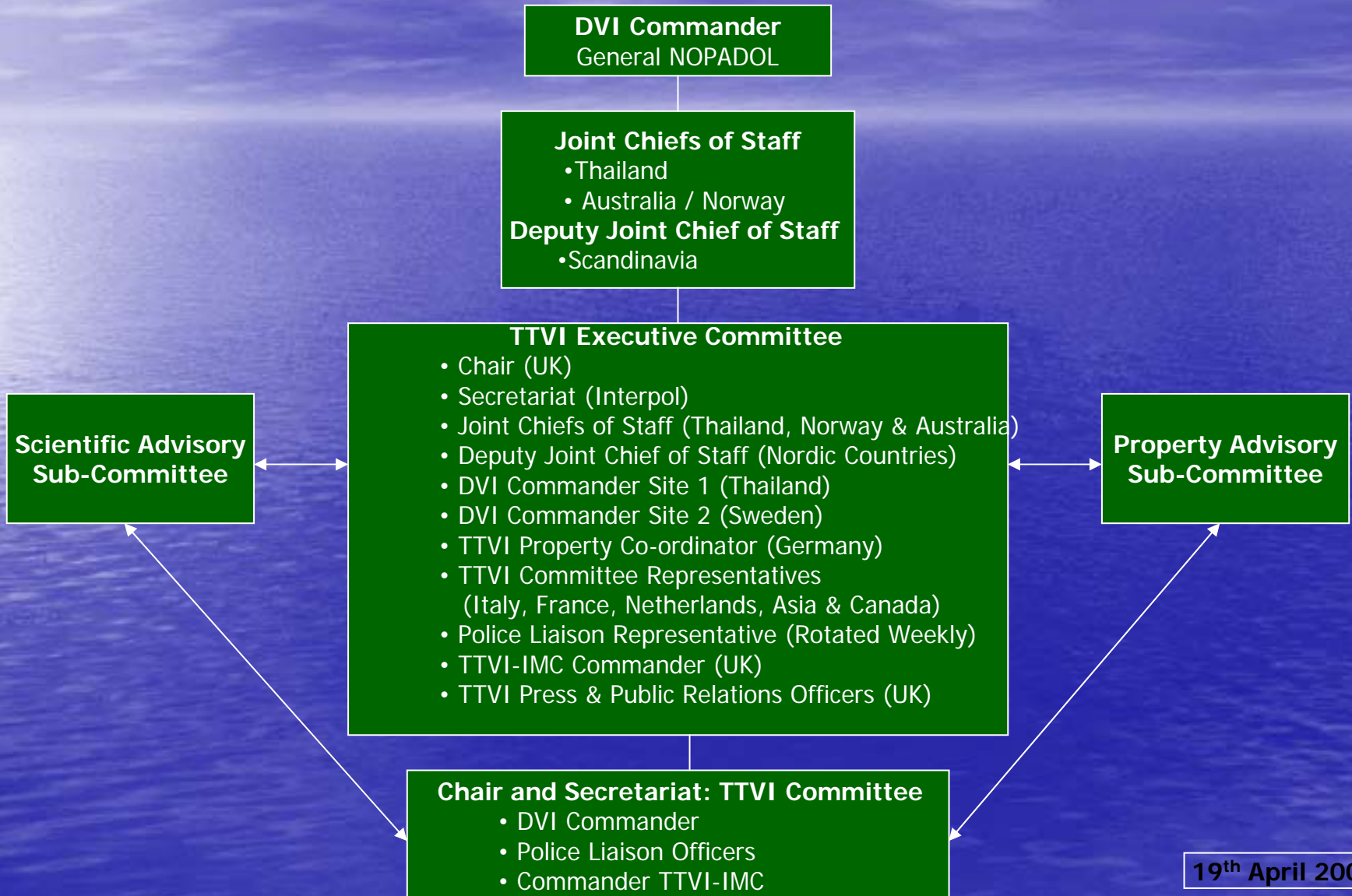
- Command of International Operations integrated into Thai operations
- Coordination of International Operations achieved through negotiation
- Joint Chiefs of staff roles established
- Executive Committee and sub-committees established
- In excess of 400 personnel from 30 countries (not including the Thai response)



# COMMAND STRUCTURE



# TTVI COMMITTEE STRUCTURE



# Background

## TTVI Operations

- Command & Administration
- Field Operations (Mortuary & Body Release)
- Information Management Centre (IMC)
- Property Operations
- Total number of staff in excess of 250

# Current Field Operations

- Field Operations:
  - Site 1A: Wat Yan Yao, Takua Pa.  
Operations suspended, 566 deceased to be transferred to Site 2 for FIP and returned to Site 1C Bung Maruan when complete.
  - Site 1B: Bang Muang.  
Site closed all deceased relocated to Site 2.
  - Site 1C: Bang Maruan  
Site under construction, to include storage for all deceased in Phang Nga Province.
  - Site 2: Mai Kao Cemetery, Phuket.  
(1723 deceased), Final Inventory Protocol being conducted with over 1300 complete.
  - Site 3: Krabi  
Site closed all deceased relocated to Site 2
- Total Deceased currently in TTVI process **2289**

# Current Status

- As at 3rd May 2005, TTVI Operations had identified over 1400 deceased persons, most of whom have now been repatriated to over 34 nations.
- There are more than 2200 unidentified victims still to be reconciled by the TTVI process.

# Strategic Outputs

- Effective response to a humanitarian mission
- Relationship building between representatives from all nations
- Exchange of technical skills and experience
- Enhancement of International mass fatality response capability
- DVI Capacity Building Opportunity for the Region.

# Critical Issues

## DNA Profiling of Post Mortem Samples:

- Significant difficulties experienced in obtaining full DNA profiles, RTP now funding ICMP to complete DNA profiling of remaining PM samples

### 1. Domestic Labs

- Siriraj Hospital, Mahidol University
- Rama Hospital, Mahidol University
- Chiangmai University
- Forensic Institute, Royal Thai Police
- Central Institute of Forensic Sciences  
Ministry of Justice

### 2. International Labs

- Beijing Genomic Institute, China
- **National Board of Forensic Medicine, Sweden**
- Forensic Alliance, United Kingdom
- International Commission for Missing Persons  
Bosnia and Herzegovina

# Critical Issues

- **DNA Matching Services and Systems**
  - Gene Codes Forensics Inc., M-FISys system.
  - Seeking technical assistance from foreign nations to support implementation of M-FISys.
  - Thai laboratories already generated over 300 potential matches to be utilised in conjunction with supporting evidence.

# Critical Issues

## TTVI Operations Fund

- To date the funding to maintain TTVI Operations has been provided through contributions of individual nations.
- Whilst this approach was appropriate for initial crisis management there is an urgent need to establish an Operational Fund to sustain ongoing operational human and financial resources

# Critical Issues

- **Final Inventory Protocol**
  - Data validation and QC process.
  - Final check of deceased and confirmation of data relating to deceased → sealing of body bag.
  - Final Reference DNA sample.
  - Implemented at Site 2, with over 1300 deceased completed.