

Phuket, Thailand May 4-6, 2005

***Nutrition, Food Security and Health:
Lessons from the Needs Assessments
and Relief Response,
Indonesia and Sri Lanka***

Patrick Webb
Chief of Nutrition
United Nations World Food Programme



The core of this talk:

- **How does food aid relate to health?**
- **Emergency Needs Assessments: what did they cover? [Q1]**
- **Nutrition and morbidity information [Q2]**
- **Nutrition-related relief responses [Q.3]**
- **Lessons learned; Issues remaining [Q4]**



How does food aid relate to health?

Since malnutrition is an important determinant of mortality, food interventions play a role in saving lives through their impact on nutrition and health of affected individuals and populations.



Food Aid with Nutrition Goals

- **Treating Acute Malnutrition**
 - Therapeutic foods (F100; F75; Plumpynut)

- **Addressing Micronutrient Deficiency**
 - Fortified blended foods (CSB/HEBs)
 - Fortified cereals (flour/meal)
 - Fortified noodles
 - Iodized salt
 - Complementary supplements

- **Resolving/Preventing Malnutrition**
 - BP5; HDRs
 - Nutritionally tailored food basket (rations)
 - Nutrition education linked to distribution

Emergency Needs Assessments; What did they cover? [Q1]

Sampling Approaches:

- Common questionnaires, assessment topics (demographic impact, physical displacement, food consumption, diet diversity, nutritional status, market prices, livelihood losses, asset losses, etc),

Sri Lanka:

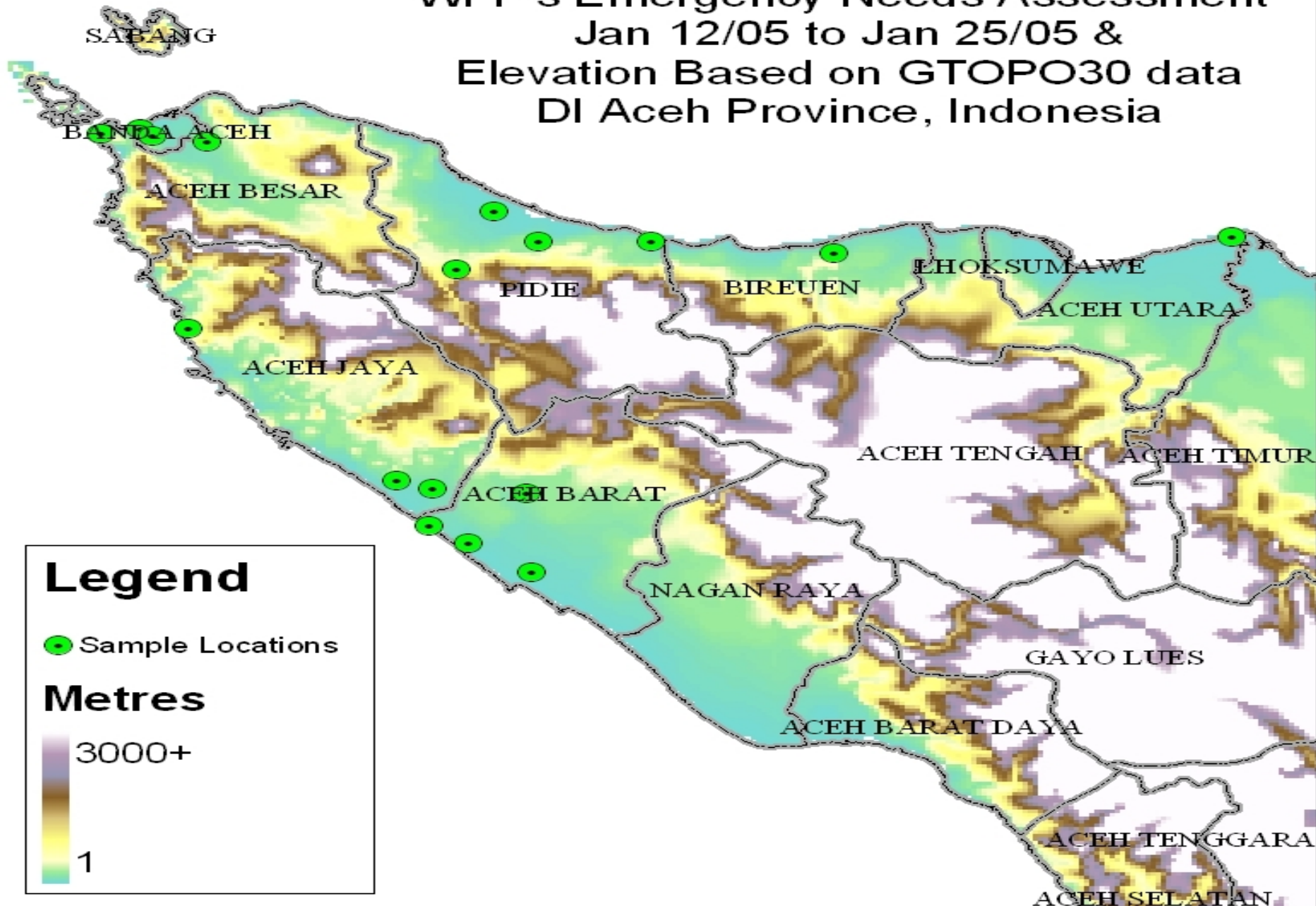
- 18 teams (106 enumerators), plus WFP/ILO teams
 - **1,860 hh interviews (8 districts)**
 - **42 community key informants** (priests, women's groups, government)

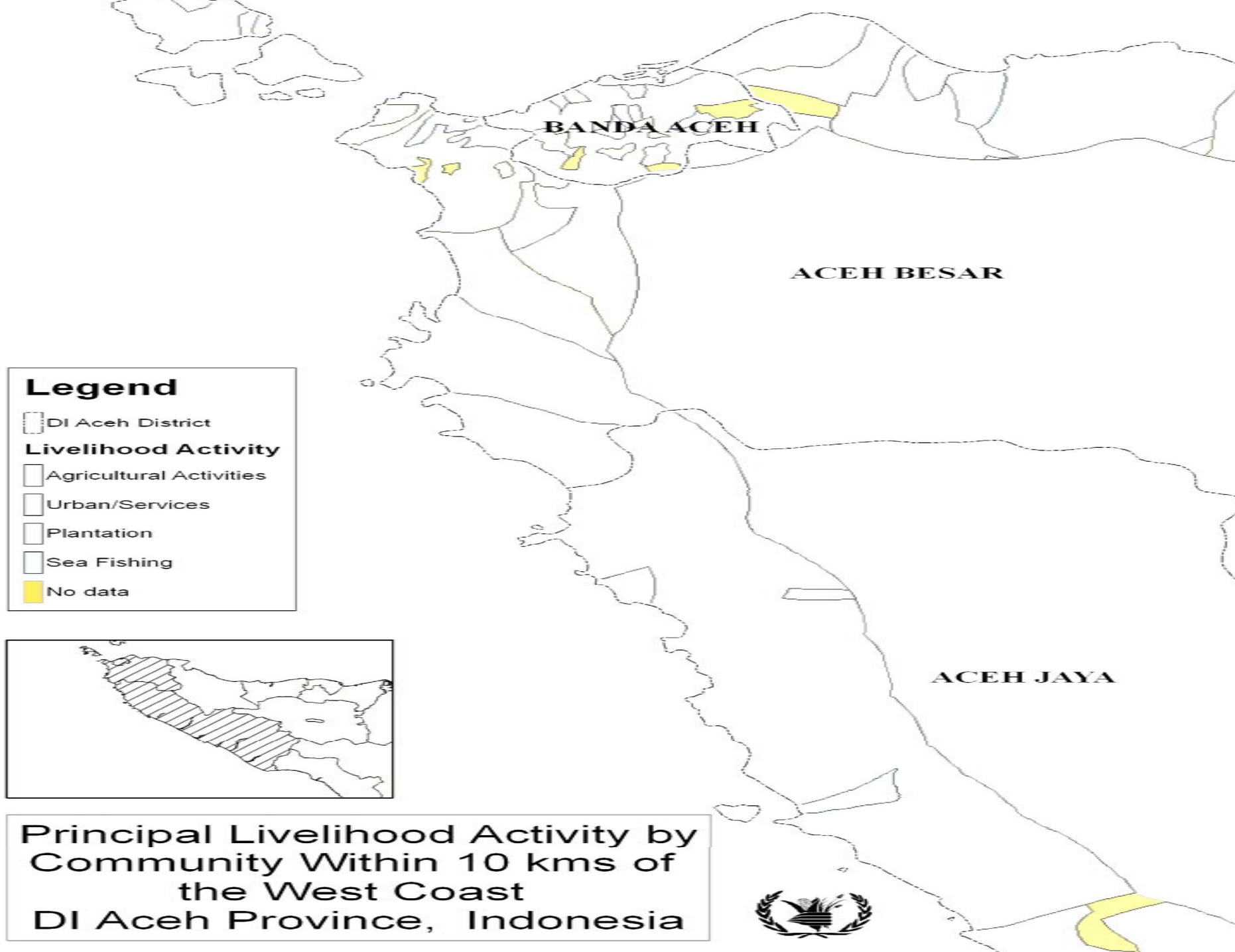
Indonesia:

- 10 enumerators, plus WFP team
 - **72 hh interviews (18 sites)**
 - **20 community group discussions**
 - district administrator interviews



Location of the Villages for WFP's Emergency Needs Assessment Jan 12/05 to Jan 25/05 & Elevation Based on GTOPO30 data DI Aceh Province, Indonesia



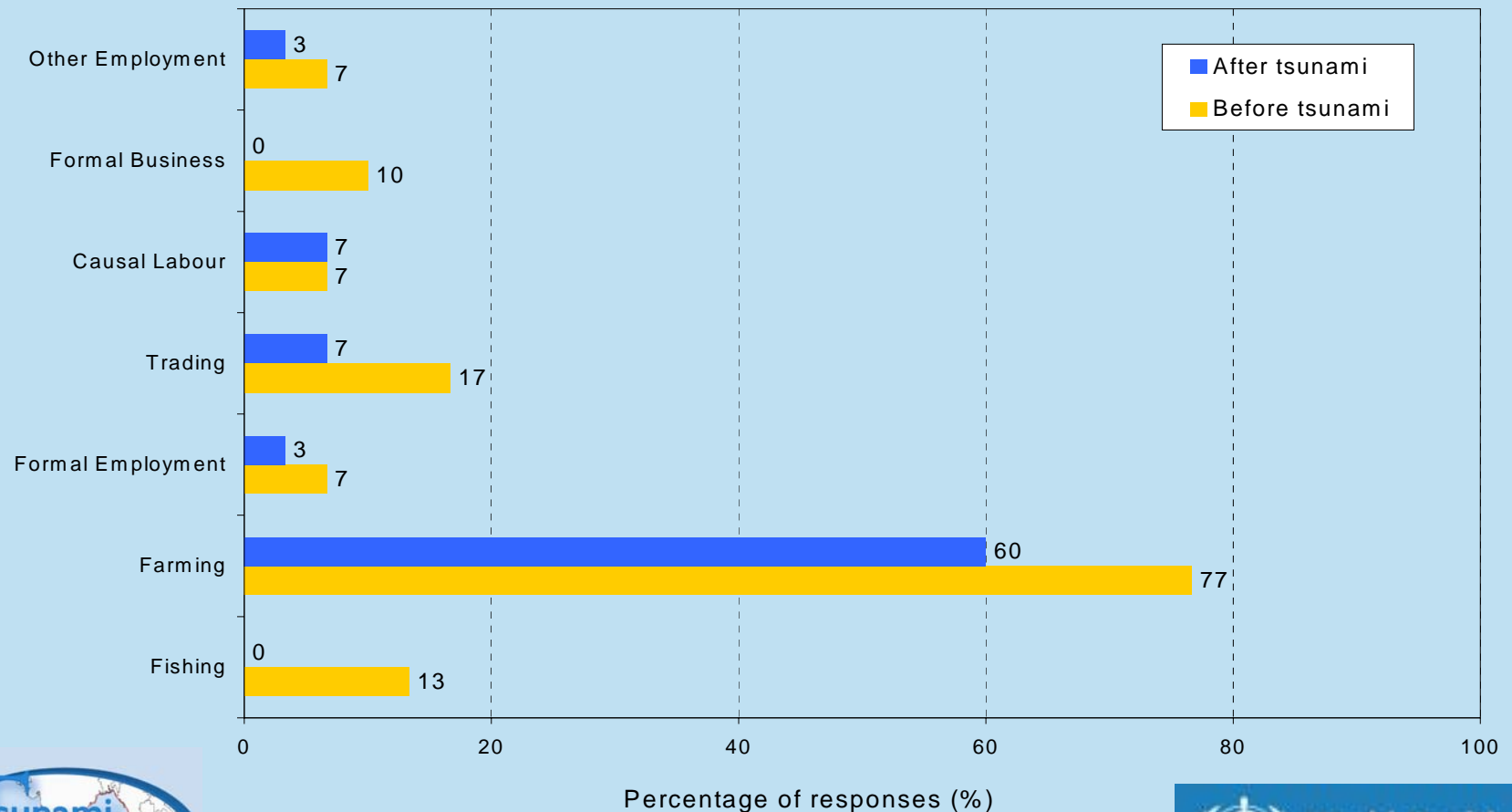




Broad ENA findings: On assets and livelihoods

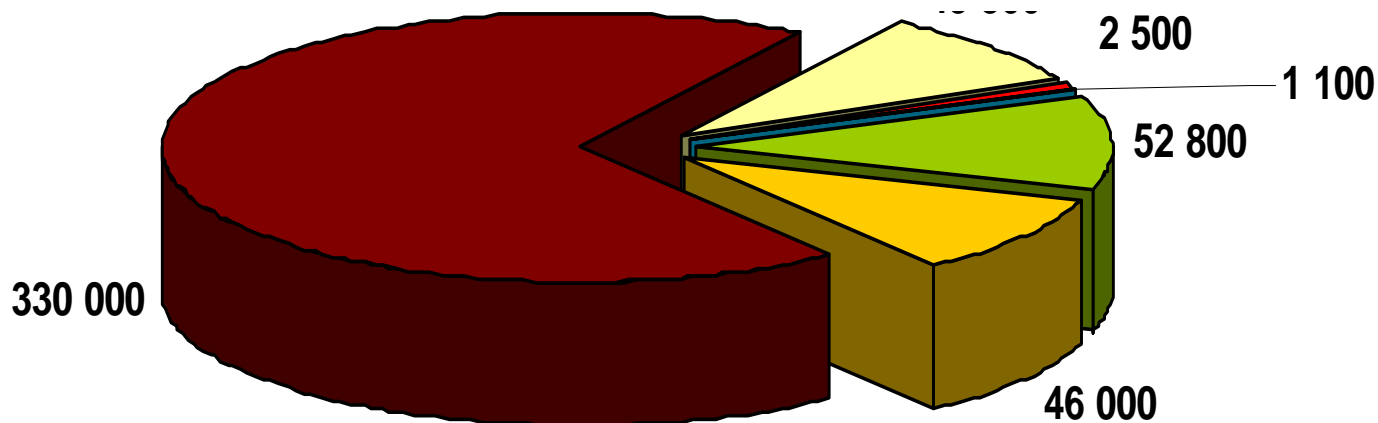
Indonesia

Economic activities for rice farmers before and after tsunami



Sri Lanka

Different livelihood groups that lost their income (number of people)

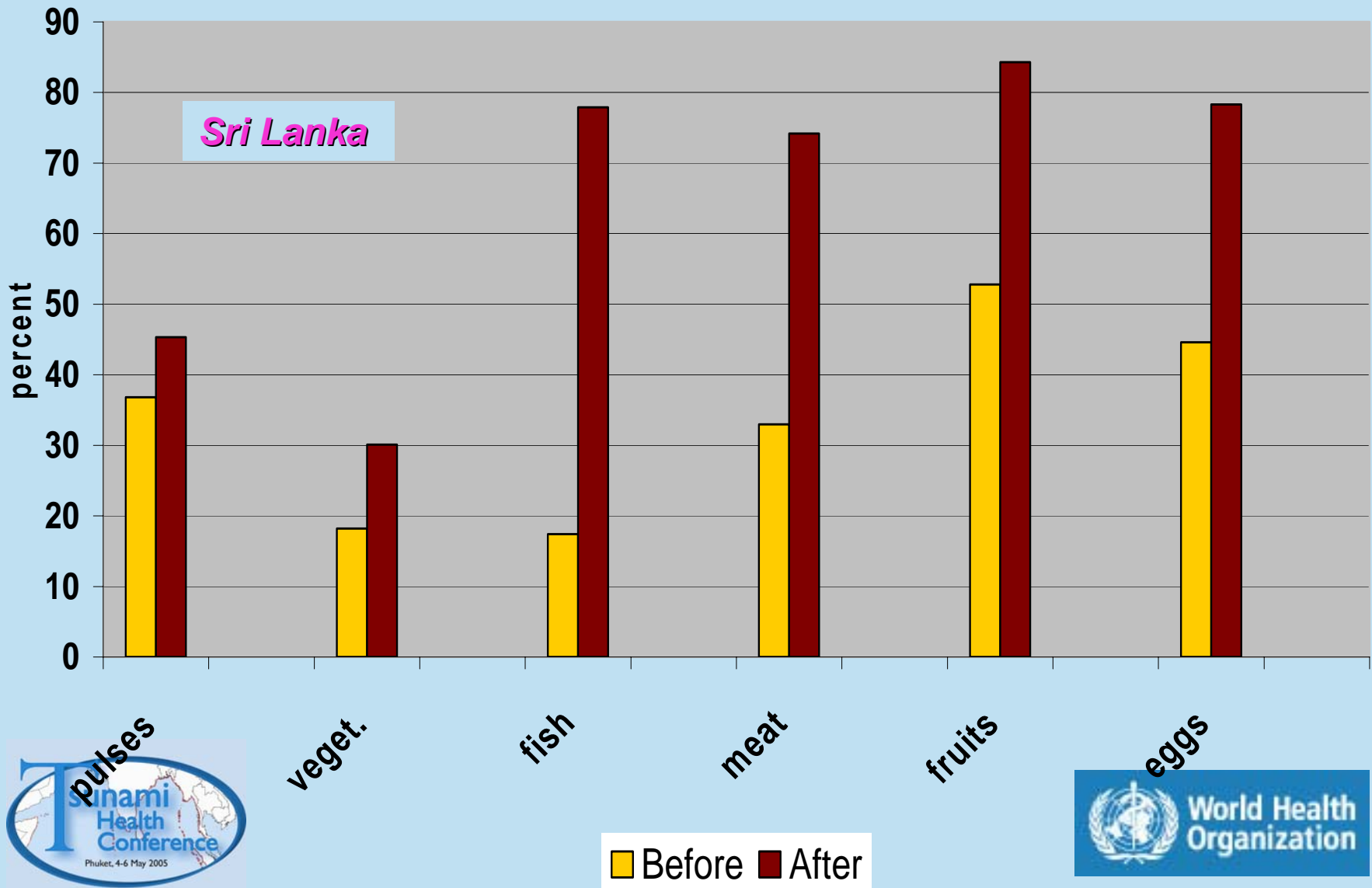


- Agriculture
- Fishing
- Manufacturing
- Hospitality
- Other Services
- Retail

Broad ENA findings: on markets and food prices

<i>Item</i>	<i>Price Increase</i>
Staple cereals	100%-225%
Animal Products	75%-105%
Pulses	100%
Cooking Oil	95%
Soap	80%
Sanitary Products	50%-100%
Farm Inputs	85%

Food items *Not* consumed by households pre and post Tsunami



ENA findings on: health, water, sanitation

Indonesia:

- No major outbreaks of disease
- Water bladder filter (service of Austr. Army)
- Rising morbidity in poorly-serviced camps (lacking clean water, sanitation)

Camp-based children

- 43% diarrhoea,
- 70% cough
- 56% fever
- 35% vomit

Adult women:

- 17% diarrhoea
- 45% cough
- 26% fever
- 27%, vomit

Nutrition and health information [Q2]

Indonesia

UNICEF/CDC/WFP rapid purposive survey:

- 600 < 5s in camps: GAM (wasting) = 12.7%
- Severe acute malnutrition = 1.5%
- Adult women (BMI <18.5) = 15%
- Women at risk chronic energy deficiency (MUAC <23.5cm) = 22%



Nutrition and health information [Q2]

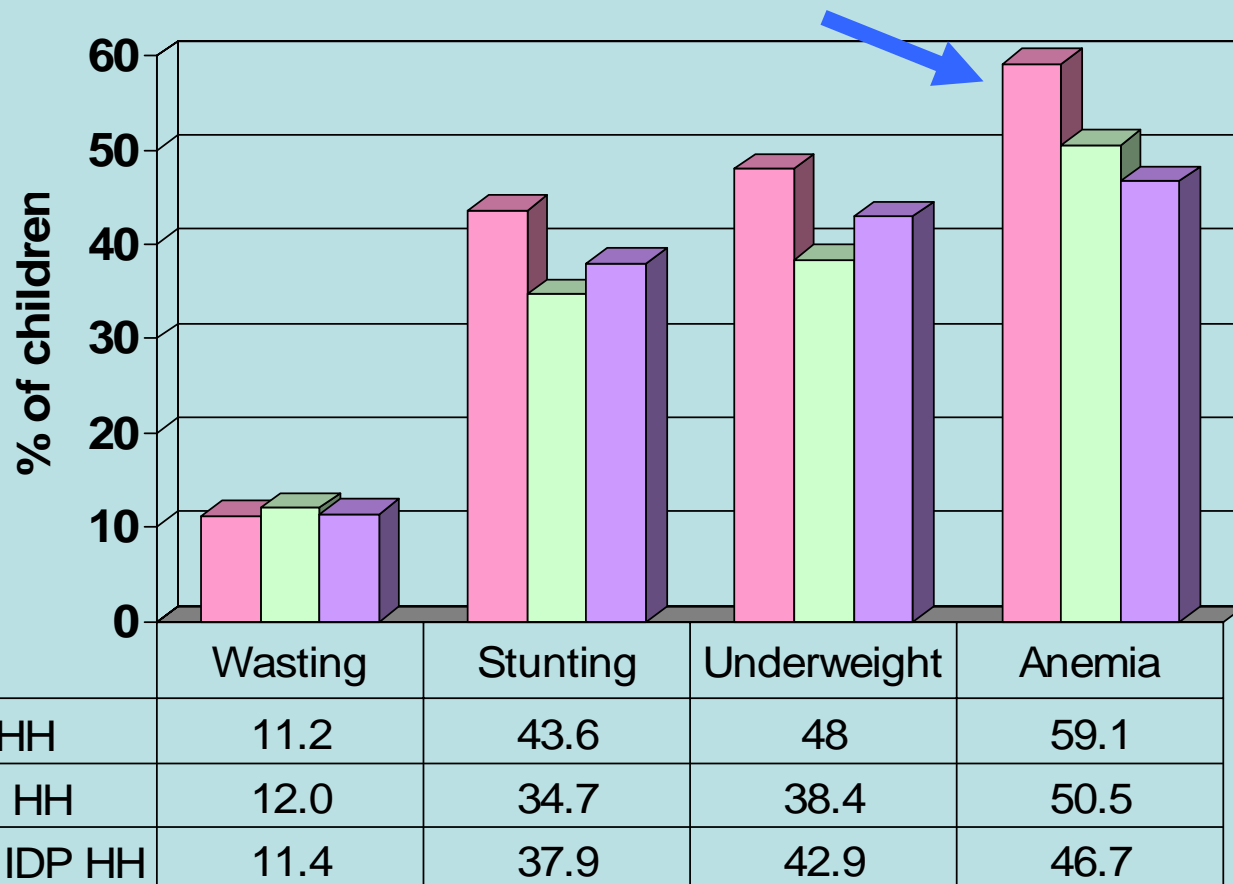
Indonesia

Additional malnutrition/morbidity surveys:

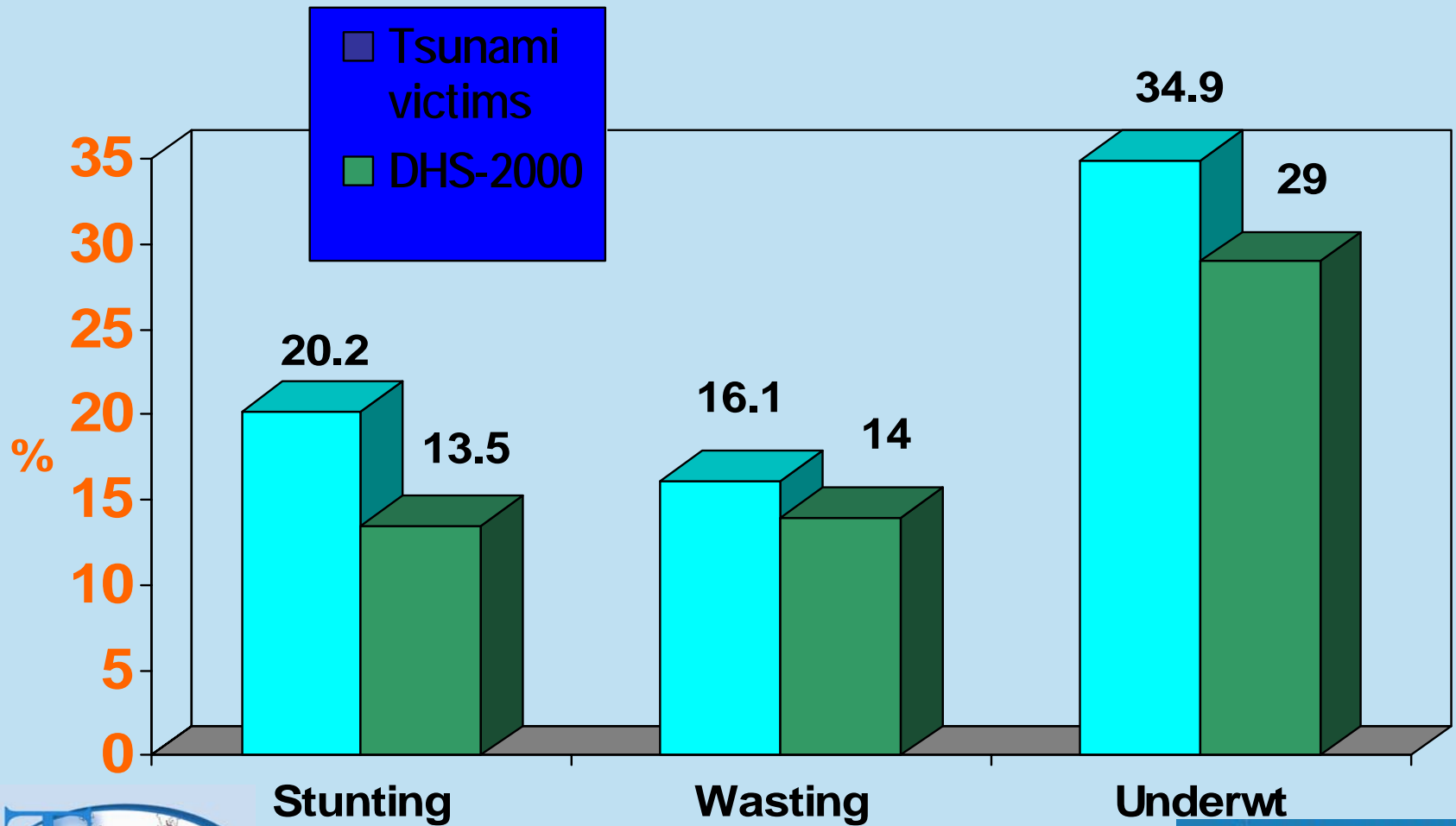
- * HKI – Banda Aceh
- * SCF – Eastern coast/Banda Aceh
- * HKI and others Nias-Simuleu
- * UNICEF/MOH/WHO/WFP surveillance system first round (Aceh province)



Malnutrition among preschoolers in Aceh



Nutritional status of children (n=878) in Sri Lanka



CONSTRAINTS to ENAs

➤ **Logistics**

- Lack dedicated helicopter assets (USS Lincoln's 'displacement' effect)
- Road constraints
- Working conditions

➤ **Human Capacity**

- Overload of national MOH staff
- Lack institutional capacity and skill

➤ **Insecurity**

- Fired at
- 'No go' zones (ENA representativity?)

Nutrition Relevant Emergency Responses [Q.3]

- Food aid, logistics (for other agencies),
- Supplement distribution
- Links with shelter, water, sanitation
- Rebuilding national institutional capacity

- All the same constraints...





BISCUITS
(Fortified with Vitamins and Minerals)
GIFT OF GERMANY AND
WORLD FOOD PROGRAMME



WFP
Project : INDIA 10107.0 Act.2
NOT FOR SALE
FOR FREE DISTRIBUTION



WFP Relief Activity

(April 15, 2005)

***Sri Lanka:* 133,100 beneficiaries**

- Food Basket (rice, fortified wheat flour, fortified oil, sugar, FBF, iodized salt)

***Indonesia:* 720,000 beneficiaries**

- Food Basket (rice, canned fish, fortified oil, fortified noodles, fortified biscuits, iodized salt + IOM)
- Surveillance system (linking food security with nutrition)
- Coordination with NGOs/UNICEF on supplements.
- Expand development programming with MOH into Aceh

Myanmar: 15,000 beneficiaries

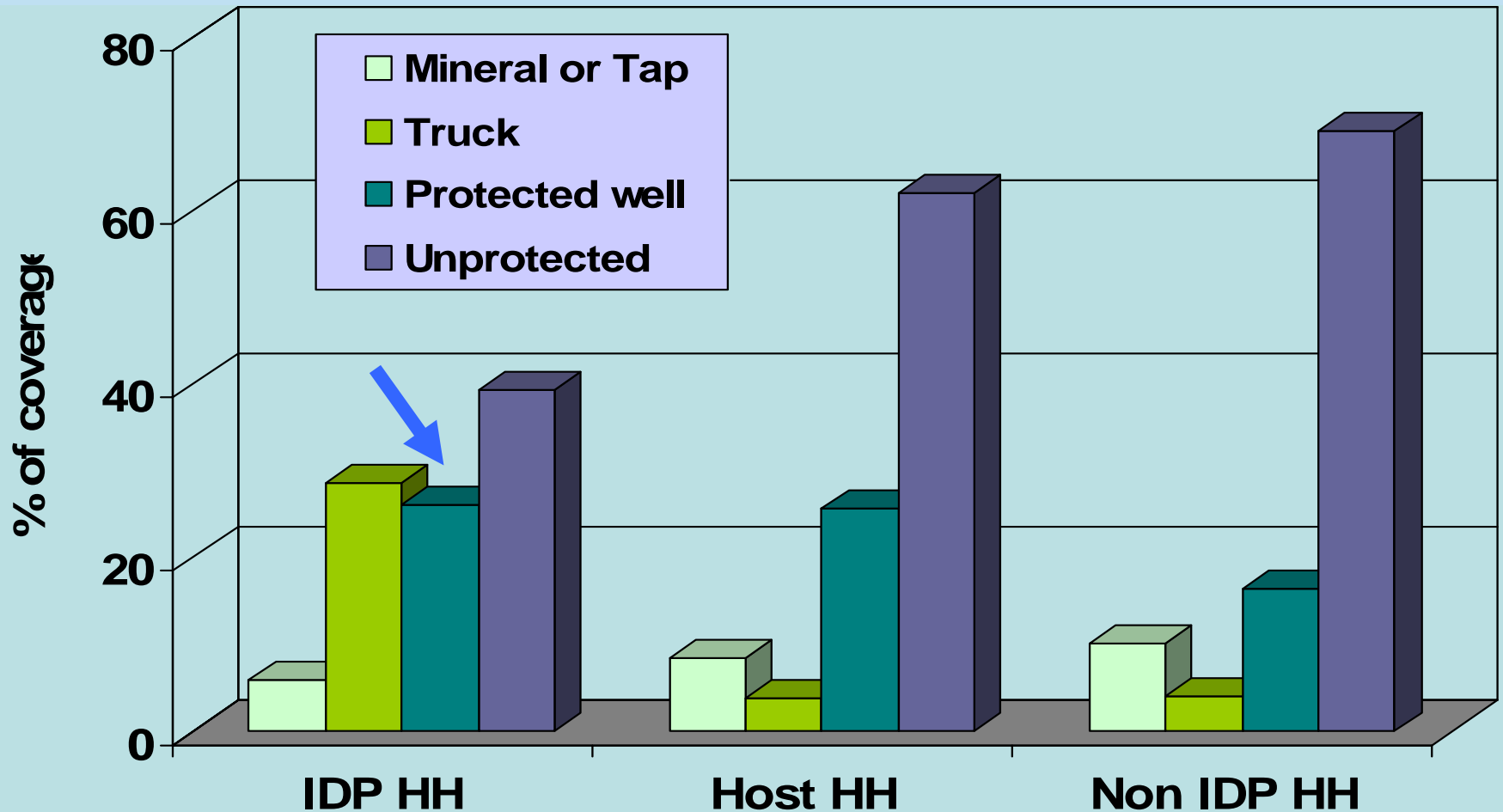
Maldives: 42,000

Somalia: 31,000

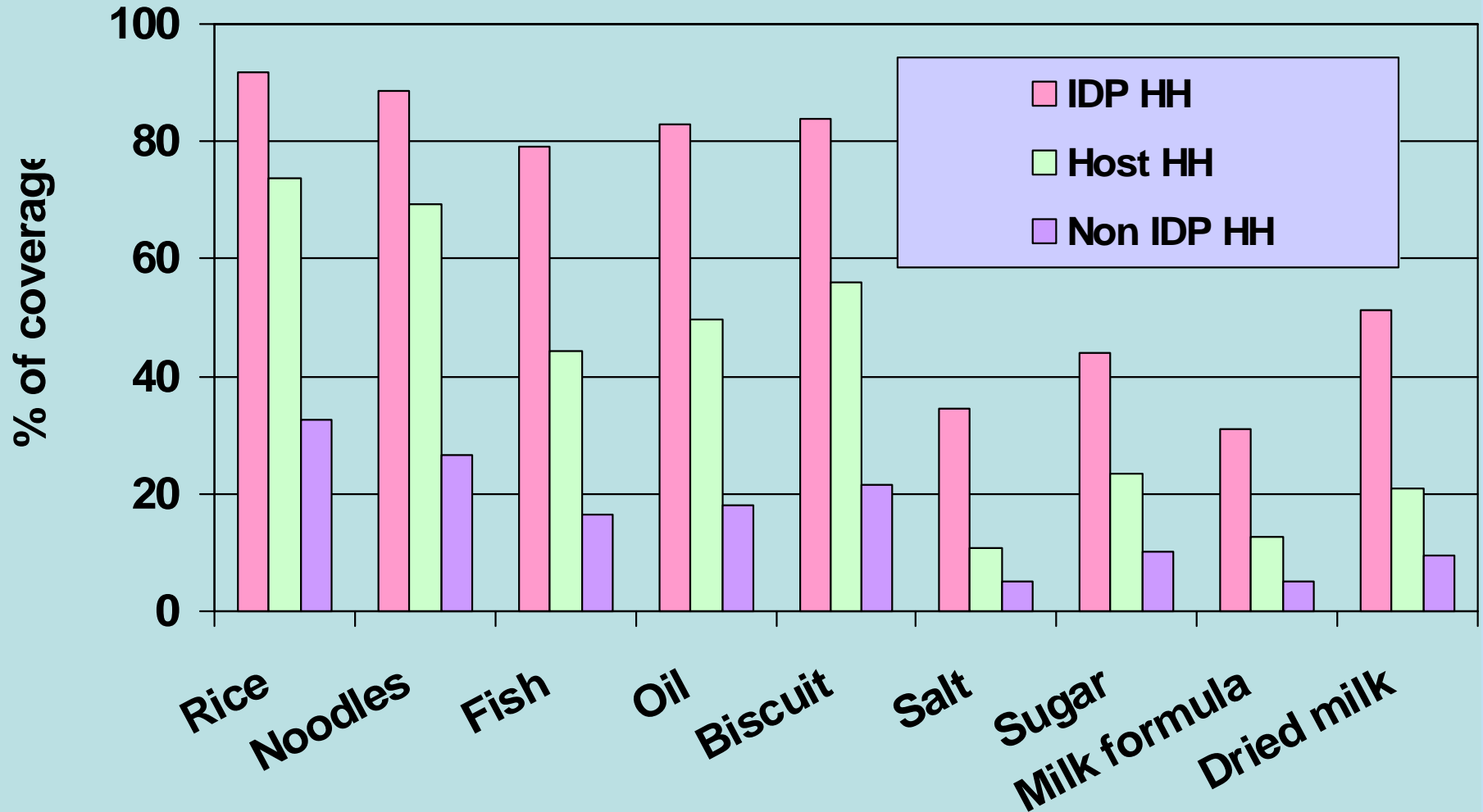


EMOP	Relief Phase		Recovery Phase	
Duration	January – February	March	April – August	September - December
<i>Tsunami affected</i>	845,000	650,000	400,000	180,000
<i>Chronically food insecure</i>			400,000	90,000
Total	845,000	650,000	800,000	270,000
Food needs per month	12,200 MT	9,600 MT	7,000 MT	1,700 MT
Activities in Sri Lanka	General Food Distribution	General Food Distribution	VGF, F/CFW, MCN, Suppl. Feeding, School Feeding	MCN, School Feeding, C/FFW

Provision of Safe Water



Coverage of Food Aid by HH Typology



Indonesia

Lessons learned [Q4]: Positives

- Multi-agency coordination good within sectors — but across sectors? Where does *nutrition* live?
- Micronutrients were not invisible
- ENAs were multi-issue assessments, not simply focused on health only, or food only.
- Action was very quick—few post-crisis deaths.



Lessons: Remaining Issues

- Over-dramatization of crisis complicates action; don't pre-judge the context.
- Role of assts (like USS Lincoln) must be carefully re-assessed in light of information gained vz. cost, and in relation to value to other agencies
- Role of purposive (convenience) sampling when 'representative' is out of the question...
- Better screening of incoming health/food materials



BY DIRECT DIRECTIVES FROM
H. M. KING ABDULLAH II
KING OF
HASHEMITE KINGDOM
OF JORDAN
HUMANITARIAN RELIEFS DONATED
FROM
JORDAN HASHEMITE CHARITY

BRIGIEN TNI ABI KUSNO
POSKOD TSTI
BANDA ACEH

SAL
MAMIN
SAL
MAMIN

Nestlé
Nestlé
Nestlé

MAKRE
ROMMA
BISCUITS
MAKRE
ROMMA
BISCUITS
MAKRE
ROMMA
BISCUITS

