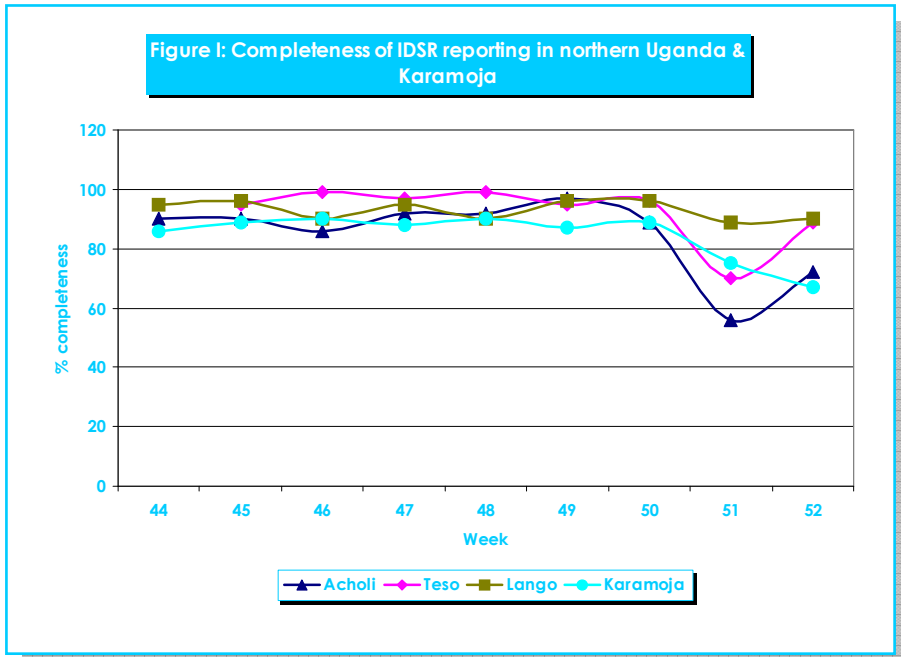


**Health Action in Crisis, Uganda: Weekly Epidemiological Report - Week 52, December 2007**

**1. Completeness of Reporting**

In general, completeness of reporting improved from week 51 to 52 in Teso, Acholi and Lango as can be seen in figure 1. In Teso sub-region completeness of reporting increased from 70% in week 51 to 89% in week 52 with Soroti having the lowest of 72%. Overall reporting for Karamoja sub-region continued to decline significantly relative to the previous week. All the districts in the region had completeness of reporting below 80% with Kaabong and Nakapiripirit districts having the lowest of 52% and 67% respectively. These decrease in reporting maybe due to absence of health workers from their duty post during the festive season. Overall reporting in Mt. Elgon has been maintained above 95%. Mbale and Manafa recorded the lowest and these could also be associated with festive season.

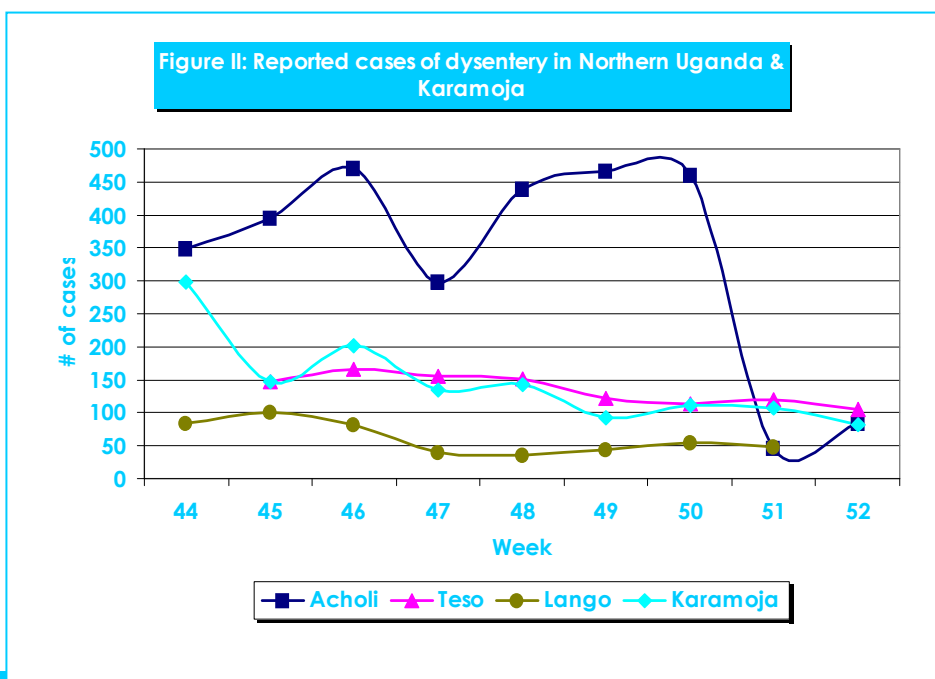


WHO continues to support the districts to sustain weekly reporting levels to above 80%. The decrease in completeness of reporting makes meaningful interpretation of the decreasing trend in number of cases of the diseases reported difficult.

**2. Disease Trends**

**2.1 Diarrhoea Diseases**

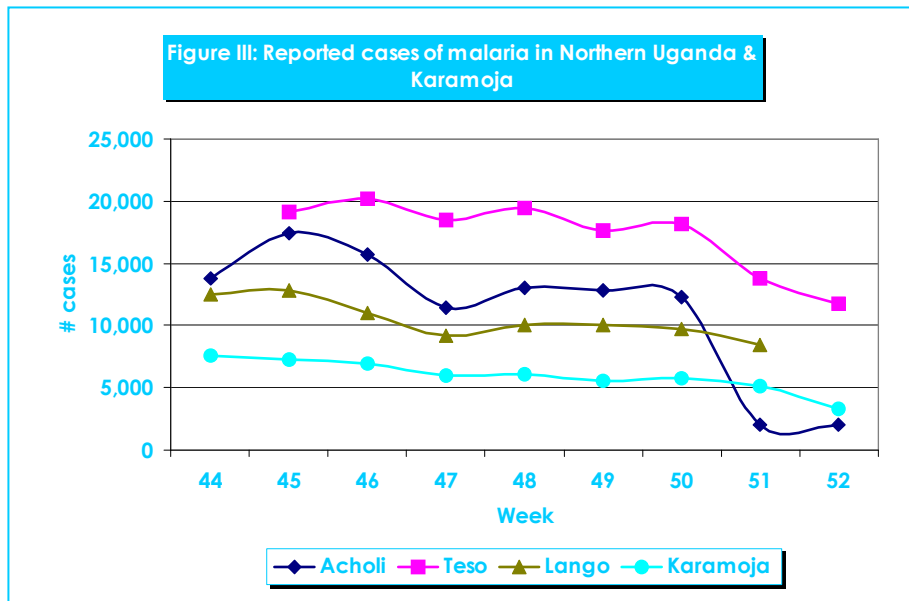
In Teso sub region, a total of 106 cases of dysentery were reported this week compared to 119 cases in week 51. Kumi district has continued to top the dysentery report with 50% of the total cases in the region. The rest of the districts in Teso show a declining trend in the weekly dysentery case incidence. In Karamoja region, a cumulative of 82 cases of dysentery have been registered during epi-week 52, representing a decline in cases relative to the previous week while in Kitgum district, a total of 84 cases of dysentery were reported in week 52. There is a steady though gradual decrease in the prevalence of dysentery in Mt. Elgon



region. Sixty cases of dysentery have been registered in the sub-region during week 52, representing an 8% decrease in cases compared to the cases reported in week 51.

## 2.2 Malaria

Reported cases of malaria is on the decrease in all the sub-regions as can be seen from figure III. Teso has consistently recorded the highest number of malaria cases from week 45 to date and reported a total of 11,714 cases in week 52 down from 13,817 cases in the previous week. However this decrease should be interpreted with caution as the reduced completeness of reporting may be playing a role in this decrease. On the other hand, this decrease may be attributed to recent ITN distribution and health education efforts during the emergency flood response in the sub-region. Within the Teso sub-region, the largest number of cases were seen in Kumi district. In Kitgum



district a total of 2,008 cases of malaria were reported in week 52, a slight decline from the previous week. Coartem stock out remains a major challenge to malaria management in the health units in the district.

In Karamoja, the number of Malaria cases decreased significantly relative to the previous week, this could mainly be attributed to the decline in completeness of reporting while in the Mt. Elgon region, there is a steady though gradual decrease in the prevalence of malaria in the sub-region. Again this declining trend could be attributed to recent ITNs distribution and health education being carried as part of the emergency flood response. Dry season reducing the breeding areas for the mosquitoes could also be another reason for the decline.

## 2.3 Other priority diseases

In Kitgum district, although the Hepatitis E outbreak showed a decline in week 52 with cumulative total now standing at 104 cases including 4 deaths accounting for a CFR of 3.8%, the outbreak has spread to a new camp.

## 3. Conclusion

In conclusion, there has been a general decline in timeliness of reporting across all the sub-regions in week 52. Malaria and Dysentery remain the most commonly reported diseases a cross all sub-regions although no outbreaks of these diseases were reported during the week. The Hepatitis E outbreak in Kitgum district is spreading to more camps and urgent measures need to be taken to reverse this trend and control the outbreak

## 4. Acknowledgements

Production of this weekly update has been made possible by contributions from the following partners:

