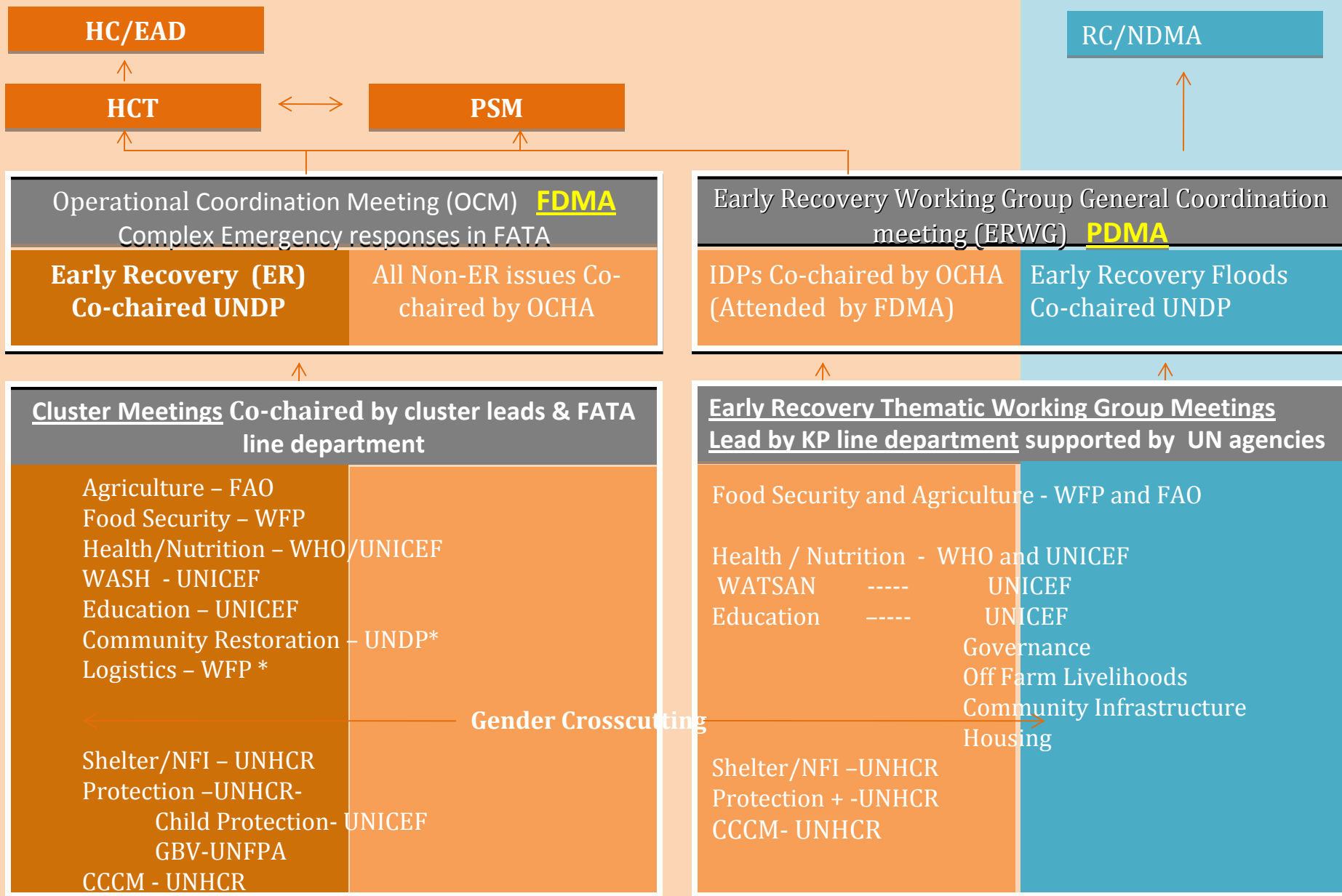


# Coordination Framework for Early Recovery and Humanitarian Response to the Complex Emergency in Pakistan as related to KP/FATA (May 2011).



HC/EAD

RC/NDMA

HCT

PSM

Operational Coordination Meeting (OCM) **FDMA**  
Complex Emergency responses in FATA

Early Recovery (ER)  
Co-chaired UNDP

All Non-ER issues Co-chaired by OCHA

Early Recovery Working Group General Coordination meeting (ERWG) **PDMA**

IDPs Co-chaired by OCHA (Attended by FDMA)

Early Recovery Floods Co-chaired UNDP

Cluster Meetings Co-chaired by cluster leads & FATA line department

Agriculture - FAO  
Food Security - WFP  
Health/Nutrition - WHO/UNICEF  
WASH - UNICEF  
Education - UNICEF  
Community Restoration - UNDP\*  
Logistics - WFP\*

Gender Crosscutting

Shelter/NFI - UNHCR  
Protection - UNHCR-  
Child Protection- UNICEF  
GBV-UNFPA  
CCCM - UNHCR

Early Recovery Thematic Working Group Meetings  
Lead by KP line department supported by UN agencies

Food Security and Agriculture - WFP and FAO

Health / Nutrition - WHO and UNICEF  
WATSAN ----- UNICEF  
Education ----- UNICEF

Governance  
Off Farm Livelihoods  
Community Infrastructure  
Housing

Shelter/NFI - UNHCR  
Protection + - UNHCR  
CCCM- UNHCR

# Complex Emergency in KP/FATA (May 2011)

