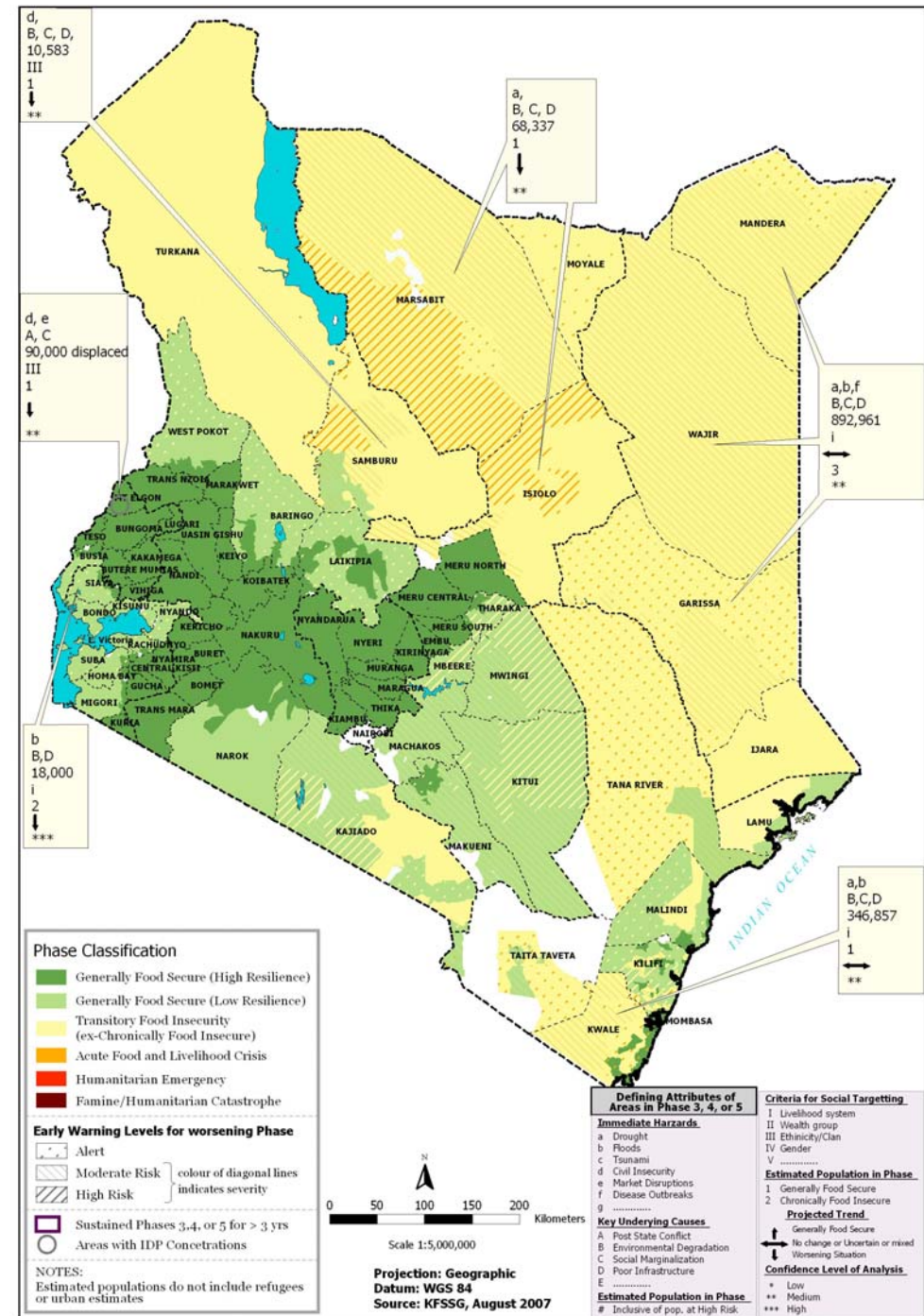


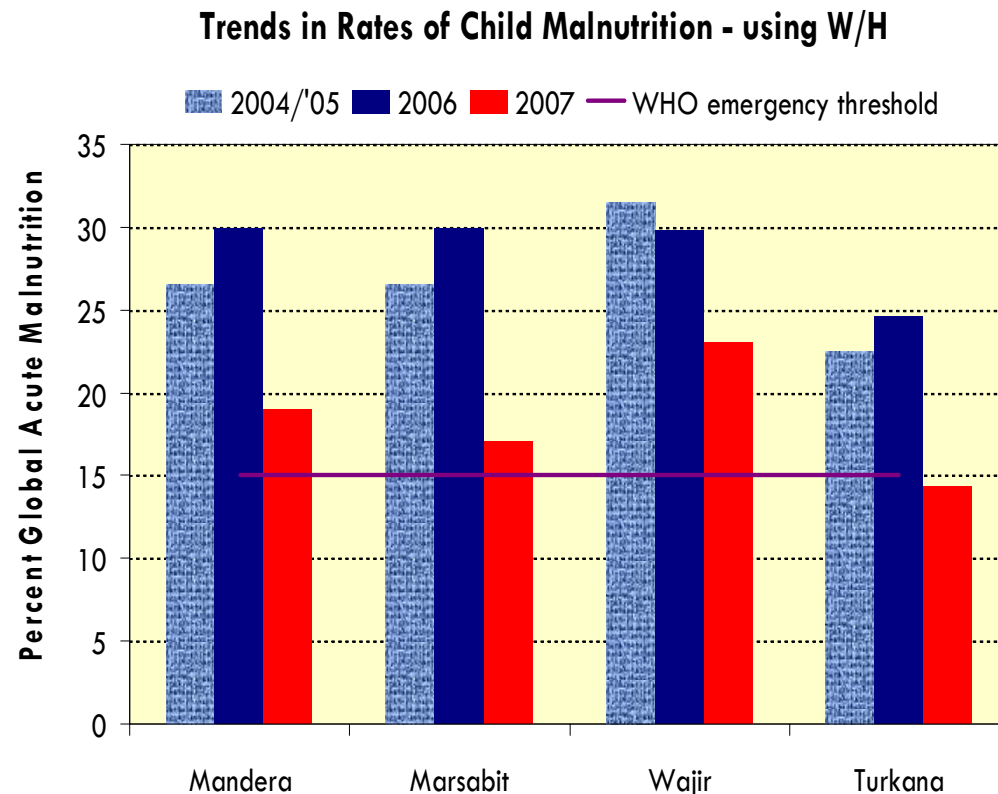
Kenya – Pastoral Groups continue to face hardships amid Recovery among some

- Pastoralists recovering from previous but remain chronically food insecure.
- Cattle raiding-related insecurity in the north worsening food insecurity;
- Nutrition status in ASAL improving but still high rates
- Crop production Estimated to be above average, though failure in south.



Kenya – Malnutrition declining though rates remain high.

- Malnutrition levels declining among pastoralist children in northern districts,
- but still above emergency threshold levels;



Source of Data: UNICEF