

Lebanon Crisis

Service Availability Assessment

29 August 2006



Table of contents

Introduction	4
Rationale.....	4
Objectives.....	5
Project Implementation	6
Phase 1 Planning and Teams Distribution.....	6
Phase 2 Data Collection.....	8
Phase 3 Data Entry.....	10
Data Analysis Plan	11
I) Outpatient facilities.....	11
II) Hospitals.....	11
Results	13
1. Out-patient clinic in primary health care centres	13
Table (1) Main Characteristics of Outpatients Facilities Assessed-1.....	14
Table (2) Main Characteristics of Outpatients Facilities Assessed-2.....	15
Figure (1) Primary health care facilities distribution by district.....	16
Figure (2) Outpatient facilities distribution by ownership.....	16
Figure (3) Outpatient facilities distribution by functioning status.....	17
Figure (4) Outpatient facilities distribution by physical damage.....	17
Figure (5) Outpatient facilities distribution by road accessibility.....	18
Table (3) Resources Availability at Assessed Outpatients Facilities.....	19
Table (4) Resources Availability at Assessed Outpatients Facilities.....	20
Figure (6) Outpatient facilities distribution by water and sewerage shortage.....	21
Figure (7) Outpatient facilities distribution by shortage in power.....	21
Table (5) Human Resources Availability at Assessed Outpatients Facilities.....	22
Table (6) Human Resources Availability at Assessed Outpatients Facilities.....	24
Figure (8) Human resources available in outpatient facilities.....	26
Service delivered during the last hostilities.....	27
Table (7) Services Availability at Assessed Outpatients Facilities.....	28
Table (8) Services Availability at Assessed Outpatients Facilities.....	29
Figure (9) Services provided during war in outpatient facilities.....	30
Table (9) Characteristics of Outpatients Facilities with No Information.....	31
2. Assessment of the hospitals	32
Table (10) Main Characteristics of Hospitals Assessed.....	33
Table (11) Main Characteristics of Hospitals Assessed-2.....	34
Figure (10) Hospitals distribution by functioning status.....	35
Figure (11) Hospitals distribution by ownership.....	35
Figure (12) Hospitals distribution by road accessibility.....	36
Figure (13) Hospitals distribution by physical damage.....	36
Figure (14) Shortage of power resources at assessed hospitals.....	37
Figure (15) Shortage of water / sewerage at assessed hospitals.....	37
Table (12) Resources Availability at Assessed Hospitals.....	38
Table (13) Resources Availability at Assessed Hospitals.....	39
Table (14) Human Resources Availability at Assessed Hospitals.....	40
Table (15) Human Resources Availability at Assessed Hospitals.....	42
Figure (16) Human resources availability at the assessed hospitals.....	45
Human Resources in the hospitals.....	46
Availability of services in the hospitals during the period of hostilities.....	46
Table (16) Services Availability at Assessed Hospitals.....	47
Table (17) Services Availability at Assessed Hospitals.....	48
Figure (17) Services provided during war at the assessed hospitals.....	49

Table (18) Shortage of Medications in Assessed Hospitals.....	50
Table (19) Shortage of Medications in Assessed Hospitals.....	51
Figure (18) Medications shortage at assessed hospitals	52
Figure (19) Availability of Medical Drugs.....	53
Shortage of drugs	54
Table (19) Characteristics of Hospitals with No Information	55
Strategic directions for the intervention	56
References	56
Annexes.....	57
Annex 1: Needs Assessment Health Facility Questionnaire	58
Annex 2: List of health facilities.....	66
Annex 3: List of hospitals.....	75
Annex 4: Saida.....	78
Annex 5: Volunteers.....	81

Introduction

Since the beginning of the crisis in Lebanon on July 12, 2006, it has been reported as of August 24, 2006 that 1,184¹ of people were killed and more than 4,059¹ were wounded. Internally displaced population (IDP) were more than 900,000² of which 550,000¹ have returned home and 'as a result of damage to property and Unexploded ordnances (UXOs) as many as a third have not yet returned. Proximity to the Israeli border (Blue Line) may also be a reason for slower returns¹.

In addition, the Israel Defence Forces (IDF) military operation has caused enormous damage to residential areas and key civilian infrastructure such as power plants, seaports, fuel depots, and hospital and health centres were destroyed. Seventy-two bridges and virtually all road networks have been systematically destroyed leaving entire communities in the South inaccessible. This profound damage to traffic arteries is posing key challenges to Government institutions and humanitarian agencies alike, particularly in remote areas of the South. The remains of unexploded ordinance splattered all over form a major ongoing threat to the health of the population.⁴

The humanitarian priorities resulting of the cessation of hostilities include addressing the health needs of the rapidly returning population, including the threat of unexploded ordinance (UXO) and cluster bombs in South Lebanon and strengthening the UN humanitarian hubs in Tyre and Saida. The focus of health partners is shifting to early recovery and reconstruction of the health system.³

Led by the World Health Organization (WHO) and the Ministry of Public Health (MOPH), health partners have been supporting the national authorities in providing immediate assistance to affected populations, including access to safe drinking water, disinfection, health care, vaccines and medications to ensure the availability of the non communicable disease drugs as anti-diabetic, anti-hypertensive, according to the health profile of Lebanon and the actual need, and over all Coordination of the Health Cluster, in close collaboration with the MOPH, as the health cluster leading UN agency and the MOPH partner.

Rationale

33 days of continuous bombing on mainly South Lebanon and South Beirut, as well as the Bekaa valley, have left a long lasting mark on the Lebanese population and infrastructure. The impact on the health sector is three-folded:

1. **Damage** to health facilities infrastructures and functional disruption mainly at the PHC and key functioning hospitals.
2. Damage to roads and bridges limiting the **access** to health facilities
3. **Exhaustion of supplies** causing shortages of fuel, drugs, medical supplies, etc. and causing increases in health expenditure at national level.

The need to conducting an assessments of the health facilities and services availability in the affected areas to have a clear data about the magnitude of the damages and supporting planning for early recovery and reconstruction of the health sector to ensure medium and long-term sustainability in meeting the health needs of the affected populations.³

Objectives

General objective Assessment of the functional damage and service availabilities in the health facilities in the affected areas after the July 2006 hostilities.

Specific Objectives

- Assessment of the physical damage in relation to the capacity to provide service to the conflict affected population.
- Assessment of the resources availability;
 - o Physical resources: power and water supply, physical structure as a damaged functional unites.
 - o Human resources: medical staff, and support staff available in the Health facility level .
 - o Drugs, consumables, and medical supplies.
- Asses the accessibility to the facility; road conditions, and financial access, transportation tools
- Asses the services availability: emergency surgical and obstetric care, maternal and children care, immunization, and general consultation in the primary Health care centres.

Outcome

- An updated data of the health facility capacity by the end of August 2006.
- Baseline data to be used in monitoring of the intervention in the revitalization of health care system
- A comparable data with the pre-hostilities MOPH health facilities data .
- A living document to be the base for further regular assessment with the same scope.

Limitation

- Security of the roads due to the UXO, military presence affecting the access
- Political ownership of the health facilities with too many partners to coordinate.
- The reliability of the base line data.
- No engineering assessment and a direct costing calculation out of the collected data.

Project Implementation

Phase 1 Planning and Teams Distribution

Basic Information: we extract the basic information from the Ministry of Public Health resources (Ministry of Public Health official Web site, Geographic Information System GIS, Ministry of Public Health archive).

Distribution of health facilities : we group the health facilities in each Qada to multiple zones change from 1 zone in Jezzin to 6 zones in Baalbeck, to accomplish the plan of distribution we put the following main criteria:

1. Number of facilities: the number of facilities is an important criteria compose the zones we assume that the questionnaire of dispensary or health centre (Part One) need up to 30 minutes to be filled and the questionnaire of the Hospital (Part two) need up to 45 to be filled
2. Distance between Beirut and the zone centre: the distance between Beirut and the zone centre change from 10 minutes in Beirut and up to 3 hours in Hermel and Bint Jbeil, these criteria affect the transportation cost and the number of centres for each team.
3. Distribution of the facilities in the zone: the distribution of the facilities and the distance between the facilities (10 to 20 minutes) affect the number of the facilities for each team and the time needed to accomplish the mission.
4. Accessibility of main roads: These criteria play an important role in the safety of the teams, the accessibility of facilities and the time needed to move from one location to the other.
5. The dead line of the project: the short time that we had to plan, collect, enter and analyze the data push us to put our effort to get data as faster as we can.

Depending on the above criteria, we distribute the zones as follows:

Qada	Zone	Estimated Number of Facilities	Estimated time to reach zone centre (minutes)	Estimated time to move between facilities (minutes)	Estimated time to fill questionnaire (minutes)	Total Time to accomplish the mission (hours)
Nabatieh	1	22	180	110	814	18.4
	3	17	180	255	629	17.7
	4	14	180	210	518	15.1
Beirut suburbs	1	28	20	280	1036	22.3
	2	28	20	280	1036	22.3
Bint Jbeil	1	15	360	150	555	17.8
	2	19	300	190	703	19.9
Beirut	1	21	10	210	777	16.6
	2	19	10	190	703	15.1
	3	26	10	260	780	17.5
	4	17	10	170	765	15.8
Jezzin	1	17	180	170	629	16.3

Qada	Zone	Estimated Number of Facilities	Estimated time to reach zone centre (minutes)	Estimated time to move between facilities (minutes)	Estimated time to fill questionnaire (minutes)	Total Time to accomplish the mission (hours)
Hasbaya	1	11	300	110	407	13.6
	2	6	300	60	222	9.7
	3	4	360	40	148	9.1
Sour	1	20	240	100	740	18.0
	2	15	240	225	450	15.3
	3	12	240	180	444	14.4
	4	15	240	150	555	15.8
Saida	1	32	90	160	1184	23.9
	2	25	60	250	750	17.7
	3	26	60	260	780	18.3
Marjayoun	1	11	240	110	407	12.6
	2	18	240	180	540	16.0
Baalbeck	1	14	240	140	420	13.3
	2	8	300	80	240	10.3
	3	9	360	90	270	12.0
	4	14	240	140	420	13.3
	5	14	240	140	420	13.3
	6	9	240	90	360	11.5
Hermel	1	9	360	90	360	13.5

Total number of zones:	31
------------------------	----

Total number of working hours	486.4
-------------------------------	-------

Transportation:

The management of transportation of such a number of teams (22 teams) in a short period was difficult, so we decide to pay money to the teams, and they can manage the way of transportation.

Teams Training and Distribution:

We arrange a meeting to the volunteers to train them on the questionnaire and to distribute them among the zones.

- *Training:* On the data collection form, on both Arabic and English languishes.
- *Distribution of teams:* In the meeting of volunteers, each volunteer register their personal information (Name, Phone, and Email), the preferred zone, and the name of his colleague. The distribution of teams among the zones took in consideration the preferred zone for each team and if the team had a place to stay in the zone in the period of assessment.
- *Distribution database development:* To process all this information (Qadas, Zones, Centres, Criteria, preferred zones for each person, Teams) we developed a small database and software to:
 - Group the volunteers in teams and distribute them among their preferred zones
 - Register the phases of the project for each team (receiving the package, data collection in process, delivering the package,...).

- Team fail recovery: if a team fails to collect data for any reason the software allow us to redistribute the available teams in the missing zones.
- Reports: the software provide as the necessary reports to manage the data collection process (List of the facilities for each team, list of volunteers, list of zones, distribution of the volunteers among zones)

The software group 47 volunteers into 23 teams and distribute them among 31 zones.

Package delivery and road training:

We provide each team a list of health facilities and hospitals, a set of questionnaires, a set of identification letters , a map and a set of telephone numbers in case of emergency including the project manager , the data officer, the head of the district office. The security officer in WHO provide them instruction about mines and safety and we train them how they can reach each centre by follow the main roads in the maps.

Phase 2 Data Collection

The data collection phase was organized in two steps:

1. South of Lebanon(Saida, Sour, Jezzin) , Nabatieh, Beirut suburbs and Beirut
2. Bekaa and Hermel

The first step of Data collection phase started in Monday, 21 Aug and it takes 3 days to finish, except the zone 1 of Saida Qada, because a volunteer fail to accomplish the task so we deliver a part of this zone to another team.

The second step started on Friday, 25 Aug and it takes 2 days to accomplish.

Contacting the Heads of district health offices and NGOS: before starting the data collection phase, we contact the heads of district health offices and NGOS and ask them to help the volunteers to collect data.

Teams Follow-up: during this phase we contact each team several times to assure the running of the process, in some areas like Bint Jbeil and Nakoura there was no coverage for mobile phones and the fixed telephone network was damaged, we contact local NGOS and get the location of mobile coverage (ex: Bint Jbeil Gov Hospital) and we deliver it to the teams.

Questionnaire receiving and teams briefing:

After accomplishing the data collection process, we receive the questionnaires from the volunteers, we check the content of the questionnaires to assure the quality of information, and we made a briefing for each team.

Redistribution of teams:

In case on team could not manage to achieve the task on time, we re-assign the task to the 2nd team in the same governorate, to cover the missing area (Saida case).

Data Collection crosschecking:

After receiving information and checking the content of the questionnaires, one team (WHO staff) was tasked to re-contacted 30% of the facilities per team to assure the visits, and validate the data with a different representative from the health facility.

Pictures:

Yaroun Health Centre



Yaroun Health centre



Bint Jbeil Gov Hospital



Red Cross Dispensary in Rmaich



Debl Dispensary



Debl Dispensary



Road status to a dispensary



Deir Intar dispensary



Yater Dispensary



Kafra Dispensary



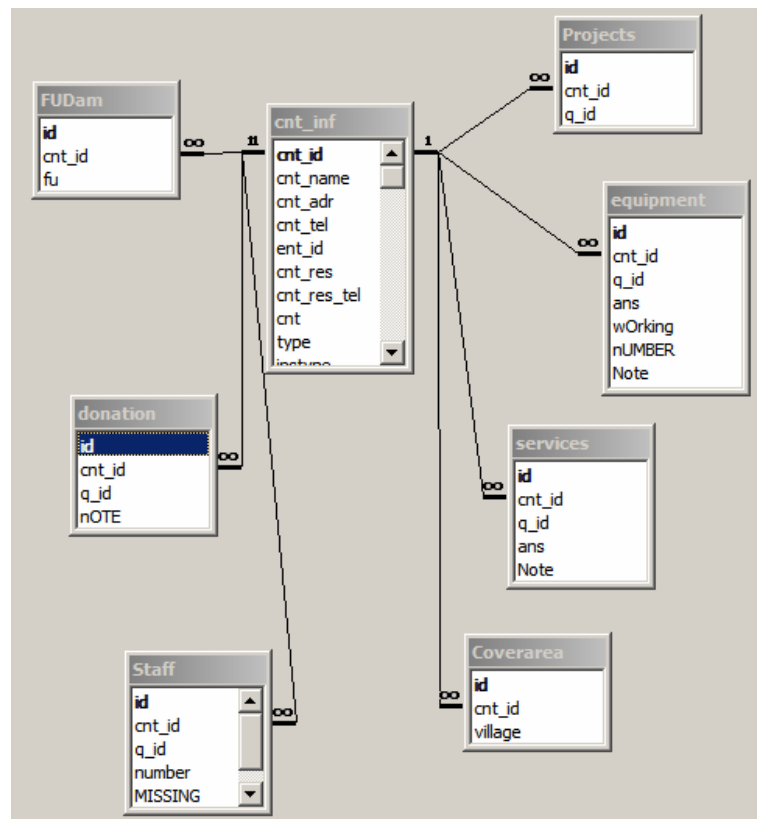
Phase 3 Data Entry

During the Data collection phase we start designing and developing the database and the data entry software, as a rapid development tool we use Microsoft Access Database, which allows us to develop interfaces for data entry for Health Facilities and hospitals.

System Design and development:

The database was created in a relational model to assure the stability of data and the flexibility of modification and upgrading in case of the existence of changes in the content of questionnaire, per example the options for a certain question are exist in a separated table which allow us to add options to this question easily without changing the structure of the database. The database includes 8 main data tables, 2 parameter tables, and several temporary tables.

We use an interface to create the questionnaire of the health facility and to allow users to enter and check the data. The software is divided in 2 files one for the hospitals and the other of the health facilities. The database was installed on a server and the application on 7 computers to allow users to make data entry.



Data Entry: the users (6 users) made the data entry under supervision of the Data Officer and the project manager.

Data Cleaning: After entering the questionnaire for a certain Qada, we check the validity of data and we made the necessary modification

Data Preparation for Analysis: We prepared a flat table that contains all data from different tables.

Data Analysis Plan

I) Outpatient facilities

Type of Analysis: Descriptive analysis to examine the distribution of functional/not functional, possible reasons for not functioning, shortage of resources in functioning of outpatient health facilities to detect urgent need by district

Targeted Population: all dispensaries, health care centres and outpatient hospital departments in targeted districts in Lebanon (Beirut, Beirut Suburbs, Bent Jbeil, Baalbeck, Hasbaya, Jezzin, Marjayoun, Nabatieh, Hermel and Sour)

Outcome variable: Functioning status; a categorical variable including 4 categories (Functioning, partially functioning, not functioning and no information*)

Variables of interest:

- *Type of facility:* Dispensary, health centre and outpatient hospital department
- *Ownership of facility:* different owners (Ministry of health, Ministry of social affairs, Municipality and non-governmental organizations)
- *Road accessibility:* (Yes/No)
- *Physical damage to buildings:* totally destroyed, severe damage, minor damage, equipment damage and no damage
- *Resources availability* in terms of Central Electricity, Generators, Mazout and fuel storage, running water, drinking water, sewerage system, and transportation
- *Human resources availability* in terms of doctors, nurses, paramedics and others
- *Services provided:* medical, maternal, paediatric, diagnostic, and surgery services.

Services provision in outpatient health facilities were initially 18 ones and for simplicity reasons were recoded and became 5 categories:

1. The first one is maternal health that includes antenatal care, delivery, emergency obstetrician, family planning, and postpartum care.
2. The second one is health education that includes environmental health, health education, and nutrition advice\breast feeding advice.
3. The third is general consultation that includes care of the older people, medical conditions, mental health, minor surgical care, and others.
4. The fourth is paediatric services and that includes immunizations, rehydration, and well baby care.
5. The last one is diagnostic services and that involves laboratory services and radiological services.

The outpatient facilities with no information were due to no response, unreachable, does not exist and missing records. It was sorted by district, road accessibility, and ownership for further investigation.

II) Hospitals

Type of Analysis: Descriptive analysis to examine the distribution of functional/not functional, possible reasons for not functioning, shortage of resources in functioning Hospitals to detect urgent need by district

Targeted Population: all hospitals in targeted districts in Lebanon (Beirut, Beirut Suburbs, Bent Jbeil, Baalbeck, Hasbaya, Marjayoun, Nabatieh, Hermel, Saida, and Sour.

Outcome variable: Functioning status; a categorical variable including 4 categories (Functioning, partially functioning, not functioning and no information*)

Variables of interest:

- *Ownership of hospitals:* Ministry of health, Military, Private and not defined
- *Total number of beds*
- *Road accessibility:* (Yes/No)
- *Physical damage to buildings:* Severe damage, minor damage and no damage
- *Resources availability* in terms of Central Electricity, Generators, Mazout and fuel storage, running water, drinking water, sewerage system, medical waste disposal and transportation
- *Human resources availability* in terms of doctors, nurses, paramedics and others
- *Services provided:* blood bank services, diagnostic, laboratory, maternal, medical, oncology, renal dialysis, and surgical services.
- *Shortage of medications;* regarding the surgical, medical usage

* The hospitals with no information were due to no response, no visit, and missing records. It was sorted by district, road accessibility, and ownership for further investigation

Results

1. Out-patient clinic in primary health care centres

As the direct destruction of health facilities was a major impact of the latest hostilities on the health services, major destruction of PHC in Marjayoun, Bent Jbeil table (1), southern areas of Sour table (2) which affect both the physical structure and the functional one, as the population moved mainly to north and east direction, fortunate enough the PHC in Hermel, Bekaa, was the least affected and continued to serve the displaced population during the month of military operation.

The ownership of the PHC give a clear idea about the potential partner for the recovery phase as NGO's have an average of 65% of the PHC in south table (1) ,and Bekaa valley Table (2) with the implication for implementation mechanisms .

Accessibility to the health facilities by road is a challenge as only 65% are accessible due to the road conditions as direct destruction or due to the UXO, which mean by clearing the road the access will be effectively improved.

The degree of damage was variable; from mainly total damage in Bent Jbeil, Marjayoun, to minor one in Sour, Hermel as broken windows, doors, but no major physical damage Table (1,2)

Figures 1-5 show the percentages of the variant mentioned in the above section.

Table (1) Main Characteristics of Outpatients Facilities Assessed-1

	Mount Lebanon Beirut Suburbs (n=42)	Bent Jbeil (n=30)	Hasbaya (n=19)	Nabatieh Marjayoun (n=26)	Nabatieh (n=48)
Functioning Status					
Functioning	22 (52%)	5 (17%)	13 (68%)	2 (8%)	29 (60%)
Partially functioning	3 (7%)	4 (13%)	0	1 (4%)	1 (2%)
Not Functioning	11 (26%)	19 (63%)	5 (26%)	16 (62%)	9 (19%)
No Information*	6 (15%)	2 (7%)	1 (6%)	7 (26%)	9 (19%)
Ownership					
Ministry of Health	2 (5%)	3 (10%)	3 (16%)	4 (15%)	4 (8%)
Ministry of Social Affairs	8 (19%)	12 (40%)	3 (16%)	9 (35%)	12 (25%)
Municipality	5 (12%)	0	2 (10%)	0	3 (6%)
Non Governmental Organization	25 (59%)	12 (40%)	10 (53%)	12 (46%)	29 (61%)
Not Defined	2 (5%)	3 (10%)	1 (5%)	1 (4%)	0
Facility Type					
Dispensary	22 (56%)	21 (70%)	13 (68%)	15 (58%)	18 (37%)
Health centre	17 (44%)	8 (27%)	6 (32%)	10 (38%)	30 (63%)
Hospital outpatient /ER	0	1 (3%)	0	1 (4%)	0
Road Accessibility					
Yes	15 (35%)	14 (47%)	15 (79%)	15 (58%)	34 (71%)
No	27 (65%)	16 (53%)	4 (21%)	11 (42%)	14 (29%)
Physical Damage**					
Totally destroyed	3 (7%)	8 (27%)	0	1 (4%)	0
Severe damage	4 (9%)	10 (33%)	1 (5%)	7 (27%)	5 (10%)
Minor damage	3 (7%)	1 (3%)	0	2 (8%)	3 (6%)
Equipment Damage	2 (4%)	0	0	0	0
No Damage	30 (73%)	11 (37%)	18 (95%)	16 (61%)	40 (84%)

*No Information: Include Unreachable, no response & does not exist facilities

Table (2) Main Characteristics of Outpatients Facilities Assessed-2

	Beirut Beirut (n=50)	Jezzin (n=17)	South Sour (n=53)	Hermel (n=4)	Bekaa Baalbeck (n=39)
Functioning Status					
Functioning	27 (57%)	12 (71%)	28 (53%)	4 (100%)	30 (77%)
Partially functioning	1 (2%)	0	4 (8%)	0	2 (5%)
Not Functioning	2 (4%)	2 (12%)	14 (26%)	0	5 (13%)
No Information*	20 (37%)	3 (17%)	7 (13%)	0	2 (5%)
Ownership					
Ministry of Health	5 (10%)	2 (12%)	7 (13%)	0	8 (21%)
Ministry of Social Affairs	4 (8%)	4 (23%)	14 (27%)	1 (25%)	7 (18%)
Municipality	0	1 (6%)	6 (11%)	0	2 (5%)
Non Governmental Organization	39 (78%) 2 (4%)	10 (59%) 0	26 (49%) 0	3(75%) 0	20 (51%) 2 (5%)
Not Defined					
Facility Type**					
Dispensary	27 (64%)	15 (88%)	40 (75%)	3 (75%)	35 (90%)
Health centre	14 (33%)	1 (6%)	13 (25%)	1 (25%)	4 (10%)
Hospital outpatient /ER	1 (2%)	1 (6%)	0	0	0
Road Accessibility					
Yes	27 (54%)	13 (76%)	45 (85%)	4 (100%)	32 (82%)
No	23 (46%)	4 (24%)	8 (15%)	0	7 (18%)
Physical Damage					
Totally destroyed	0	0	0	0	0
Severe damage	1 (2%)	0	1 (2%)	0	1 (3%)
Minor damage	0	0	14 (26%)	0	0
Equipment Damage	0	0	0	0	0
No Damage	49 (98%)	17 (100%)	38 (72%)	4 (100%)	38 (97%)

* No Information, includes unreachable, no response and does not exist facilities

** Missing data

Figure (1) Primary health care facilities distribution by district

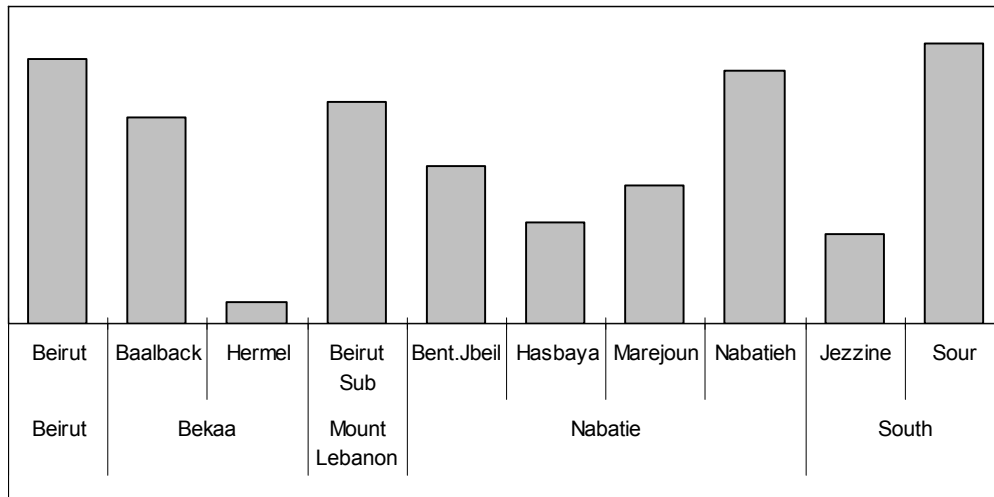


Figure (2) Outpatient facilities distribution by ownership

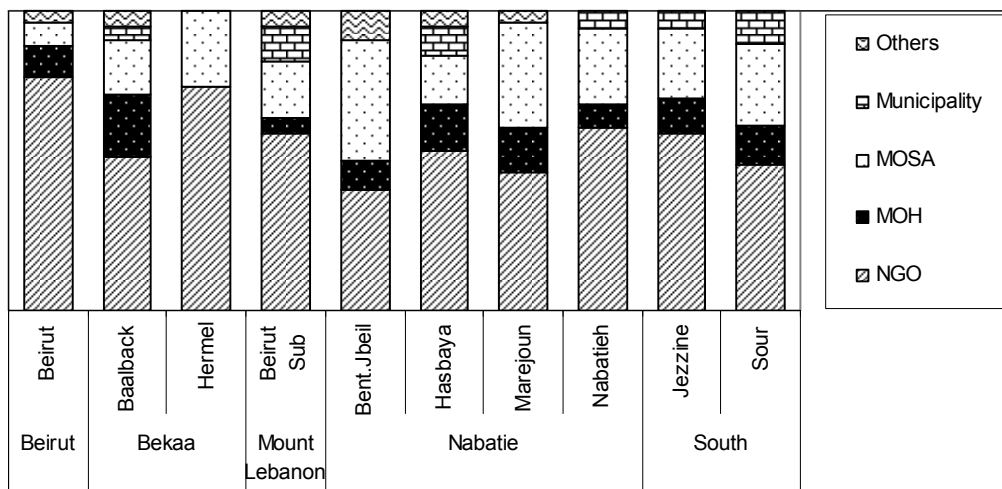


Figure (3) Outpatient facilities distribution by functioning status

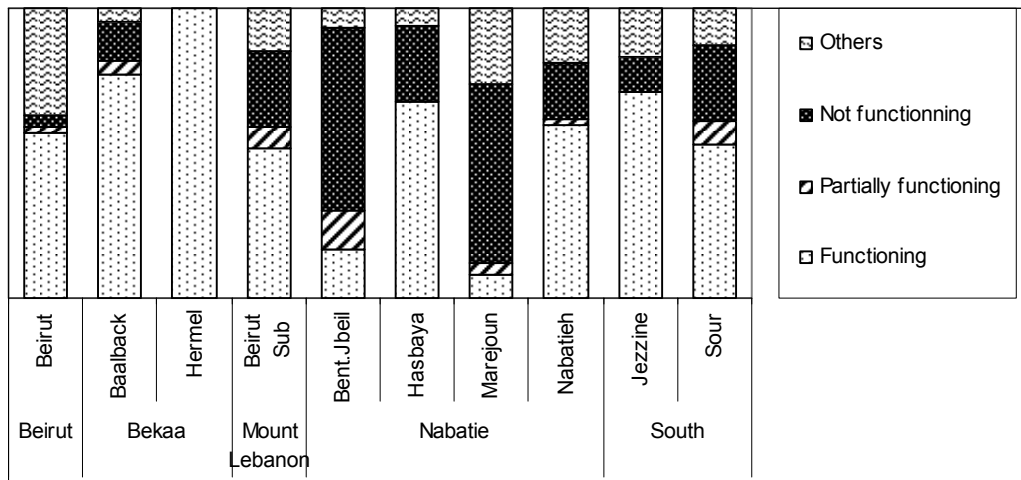


Figure (4) Outpatient facilities distribution by physical damage

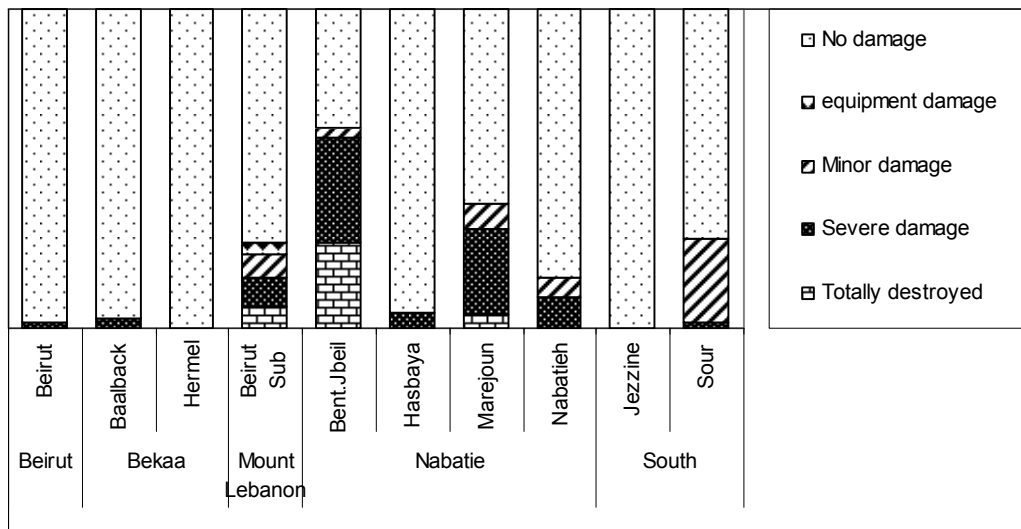
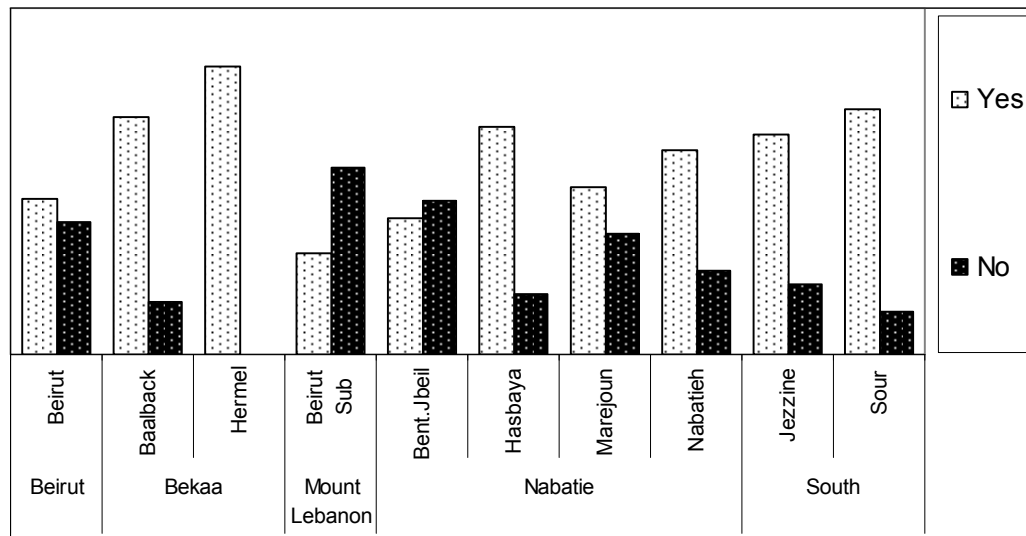


Figure (5) Outpatient facilities distribution by road accessibility

The infra structure and resources availability addressed in the following Tables 3-4 shows that

- Regarding the **power supply**: the main problem is in Marjayoun, Bent Jbeil and Nabatieh where 0-22% of functioning or partially functioning health facilities has a central city power supply, and the main source of power is the usage of generators which available in about 46% of the PHC, out of this centres about 13% has enough fuel storage (for one week) to run this facility.
- **Water supply**: while running water available in 50-90 % of the functioning PHC drinking water is the challenge as in Nabatieh, Marjayoun, and Bent Jbeil, which need water purification unites in this Facility as an urgent intervention.
- **Sewerage system** is a problem in Bent Jbeil, Southern Sour, while it not a priority one in the rest of the affected areas
- **Transportation** by Ambulance is a gap in almost all the affected areas as either a number of vehicles or the integrity of it. In addition, it is basic needs for sound emergency services.

Table (3) Resources Availability at Assessed Outpatients Facilities

	Mount Lebanon						Hasbaya			Nabatieh Marjayoun			Nabatieh		
	Beirut Suburbs			Bent Jbeil			F	P	N	F	P	N	F	P	N
	F (n=22)	P (n=3)	N (n=11)	F (n=5)	P (n=4)	N (n=19)	F (n=13)	P	N (n=5)	F (n=2)	P (n=1)	N (n=16)	F (n=29)	P (n=1)	N (n=9)
Transportation															
Ambulance	3 (14%)	0	0	1 (20%)	2 (50%)	1 (5%)	4 (31%)		0	1 (50%)	1 (100%)	1 (6%)	4 (14%)	1 (100%)	1 (11%)
Vehicle	2 (9%)			2 (40%)	0		1 (8%)			1 (50%)		0	7 (24%)		0
Power resources															
Central power	20 (91%)	3 (100%)	1 (9%)	1 (20%)	0 (50%)	0 (11%)	2 (15%)		1 (20%)	1 (50%)	0 (100%)	1 (6%)	12 (41%)	0 (100%)	1 (11%)
Generator	17 (77%)	2 (67%)	1 (9%)	1 (20%)	0	0	6 (46%)		1 (20%)	1 (50%)	1 (100%)	2 (12%)	14 (48%)	1 (100%)	2 (22%)
Mazout storage	8 (36%)	0	0	1 (20%)	0		0		1 (20%)	2 (100%)	1 (100%)	0	7 (24%)	0	1 (11%)
Fuel storage	7 (32%)	0		1 (20%)			1 (8%)		1 (20%)	1 (50%)	0	1 (6%)	5 (17%)	0	1 (11%)
Water															
Running water	20 (91%)	3 (100%)	0	1 (25%)	2 (50%)	1 (5%)	8 (62%)		2 (40%)	2 (100%)	1 (100%)	6 (37%)	28 (97%)	1 (100%)	2 (22%)
Drinking water	6 (27%)	0		1 (25%)	1 (25%)		6 (46%)		2 (40%)	0	0	0	24 (83%)	0	5 (55%)
Sewerage	21 (95%)	3 (100%)	1 (9%)	1 (25%)	0	1 (5%)	10 (77%)		2 (40%)	2 (100%)	0	5 (31%)	27 (93%)	1 (100%)	2 (22%)

F: Functioning facilities

P: Partial functioning

N: Not functioning

Table (4) Resources Availability at Assessed Outpatients Facilities

	Beirut Beirut			South			Sour			Hermel			Bekaa Baalbeck		
	F (n=27)	P (n=1)	N (n=2)	F (n=2)	P (n=28)	N (n=4)	F (n=14)	P	N (n=5)	F (n=4)	P	N	F (n=30)	P (n=2)	N (n=5)
Transportation															
Ambulance	14	0	0	0	10	1	1	0	0	0	0	5	1	0	
Vehicle	(52%)	0	0	0	(36%)	(25%)	(7%)	0	0	0	0	(17%)	50%	0	
	17				4	1	1					3	1		
	(63%)				(14%)	(25%)	(7%)					(10%)	(50%)		
Power resources															
Central power	27	1	1	2	12	4	1	1	4	28	1	0			
Generator	(100%)	(100%)	(50%)	(100%)	(43%)	(100%)	(7%)	(20%)	(100%)	(93%)	(50%)	0			
Mazout storage	18	1	1	1	16	4	3	1	4	11	0	0			
Fuel storage	(67%)	(100%)	(50%)	(50%)	(57%)	(100%)	(21%)	(20%)	(100%)	(37%)	2	0			
	15	1	1	2	5	1	1	1	2	12	(100%)				
	(56%)	(00%)	(50%)	(100%)	(18%)	(25%)	(7%)	(20%)	(50%)	(40%)	0				
	12	1	1	2	2	1	0	1	0	5					
	(44%)	(100%)	(100%)	(100%)	(7%)	(25%)		(20%)		(17%)					
Water															
Running water	27	1	1	1	24	3	5	2	4	28	2	0			
Drinking water	(100%)	(100%)	(100%)	(50%)	(86%)	(75%)	(38%)	(40%)	(100%)	(93%)	(100%)	0			
	24	1	0	2	10	1	0	2	3	23	1				
	(89%)	(100%)		(100%)	(36%)	(25%)		(40%)	(75%)	(77%)	(50%)				
Sewerage	25	1	1	2	27	4	7	2	3	20	2	0			
	(93%)	(100%)	(50%)	(100%)	(96%)	(100%)	(50%)	(40%)	(75%)	(67%)	(100%)				

F: Functioning facilities

P: Partial functioning

N: Not functioning

Figure (6) Outpatient facilities distribution by water and sewerage shortage

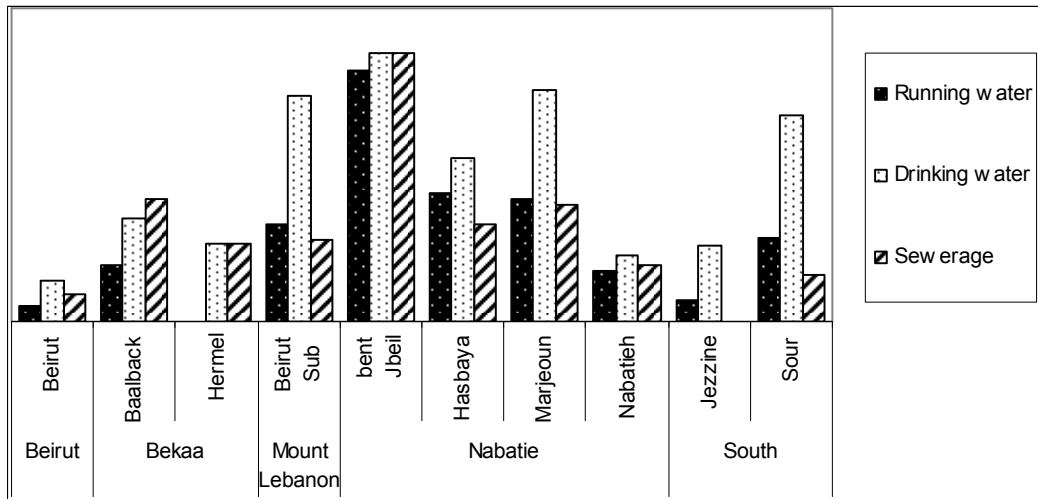


Figure (7) Outpatient facilities distribution by shortage in power

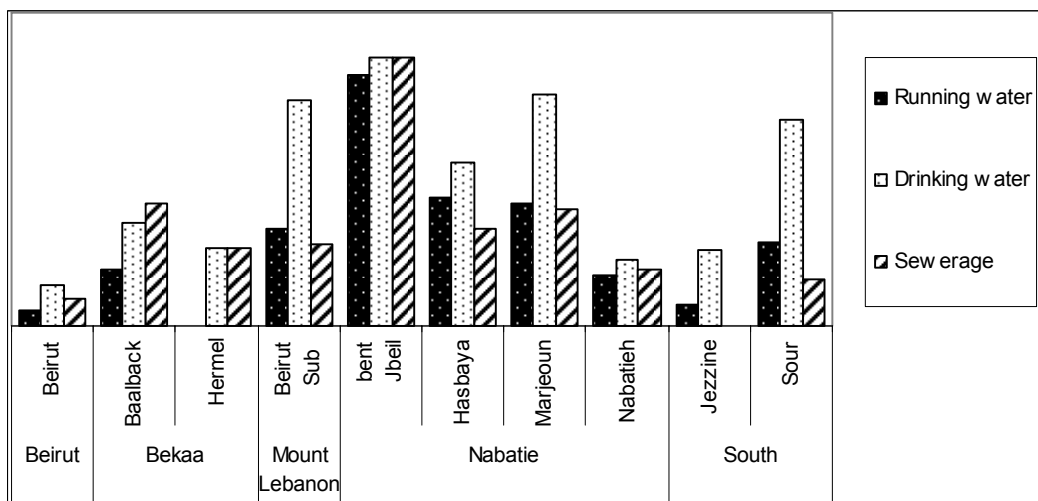


Table (5) Human Resources Availability at Assessed Outpatients Facilities

	Mount Lebanon Beirut Suburbs (n=42)	Bent Jbeil (n=30)	Hasbaya (n=19)	Nabatieh Marjayoun (n=26)	Nabatieh (n=48)
Dentist					
No	36 (86%)	28 (93%)	18 (95%)	26 (100%)	47 (98%)
Yes	6 (14%)	2 (7%)	1 (5%)		1 (2%)
ENT					
No	1 (2%)				
Yes	41 (98%)	30 (100%)	19 (100%)	26 (100%)	48 (100%)
Eyes					
No					
Yes	42 (100%)	30 (100%)	19 (100%)	26 (100%)	48 (100%)
General Practitioner					
No	18 (43%)	19 (63%)	7 (37%)	13 (50%)	22 (46%)
Yes	24 (57%)	11 (37%)	12 (63%)	13 (50%)	26 (54%)
Health Educator					
No	32 (76%)	27 (90%)	15 (79%)	25 (96%)	
Yes	10 (24%)	3 (10%)	4 (21%)	1 (4%)	48 (100%)
Internist					
No	21 (50%)	23 (77%)	15 (79%)	25 (96%)	29 (60%)
Yes	21 (50%)	7 (23%)	4 (21%)	1 (4%)	19 (40%)
Laboratory technician					
No	36 (86%)	27 (90%)	17 (90%)	25 (96%)	46 (96%)
Yes	6 (14%)	3 (10%)	2 (10%)	1 (4%)	2 (4%)
Midwife					
No	36 (86%)	29 (97%)	19 (100%)	25 (96%)	47 (98%)
Yes	6 (14%)	1 (3%)		1 (4%)	1 (2%)
Obstetrician					
Yes	20 (48%)	21 (70%)	11 (58%)	21 (81%)	25 (52%)
No	22 (52%)	9 (30%)	8 (42%)	5 (19%)	23 (48%)
Pediatrician					
No	17 (40%)	18 (60%)	10 (53%)	15 (58%)	23 (48%)
Yes	25 (60%)	12 (40%)	9 (47%)	11 (43%)	25 (52%)
Pharmacist					

	Mount Lebanon Beirut Suburbs (n=42)	Bent Jbeil (n=30)	Hasbaya (n=19)	Nabatieh Marjayoun (n=26)	Nabatieh (n=48)
Physiotherapist					
No	33 (79%)	26 (87%)	19 (100%)	24 (92%)	42 (88%)
Yes	9 (21%)	4 (13%)		2 (8%)	6 (12%)
Practical Nurse					
No	36 (86%)	29 (97%)	19 (100%)	25 (96%)	45 (94%)
Yes	6 (14%)	1 (3%)		1 (4%)	3 (6%)
Radiographer					
No	35 (83%)	25 (83%)	15 (79%)	19 (73%)	39 (81%)
Yes	7 (17%)	5 (17%)	4 (21%)	7 (27%)	9 (19%)
Registered Nurse					
No	38 (90%)	29 (97%)	18 (95%)	25 (96%)	46 (96%)
Yes	4 (10%)	1 (3%)	1 (5%)	1 (4%)	2 (4%)
Skin					
No	23 (55%)	23 (77%)	14 (74%)	24 (92%)	32 (67%)
Yes	19 (45%)	7 (23%)	5 (26%)	2 (8%)	16 (33%)
Social worker					
No	1 (2%)		1 (5%)		
Yes	41 (98)	30 (100%)	18 (95%)	26 (100%)	48 (100%)
Surgery					
No	36 (86%)	26 (87%)	14 (74%)	23 (88%)	40 (83%)
Yes	6 (14%)	4 (13%)	5 (26%)	3 (12%)	8 (17%)
Surgery					
No	37 (88%)	27 (90%)	18 (95%)	26 (100%)	47 (98%)
Yes	5 (12%)	3 (10%)	1 (5%)		1 (2%)

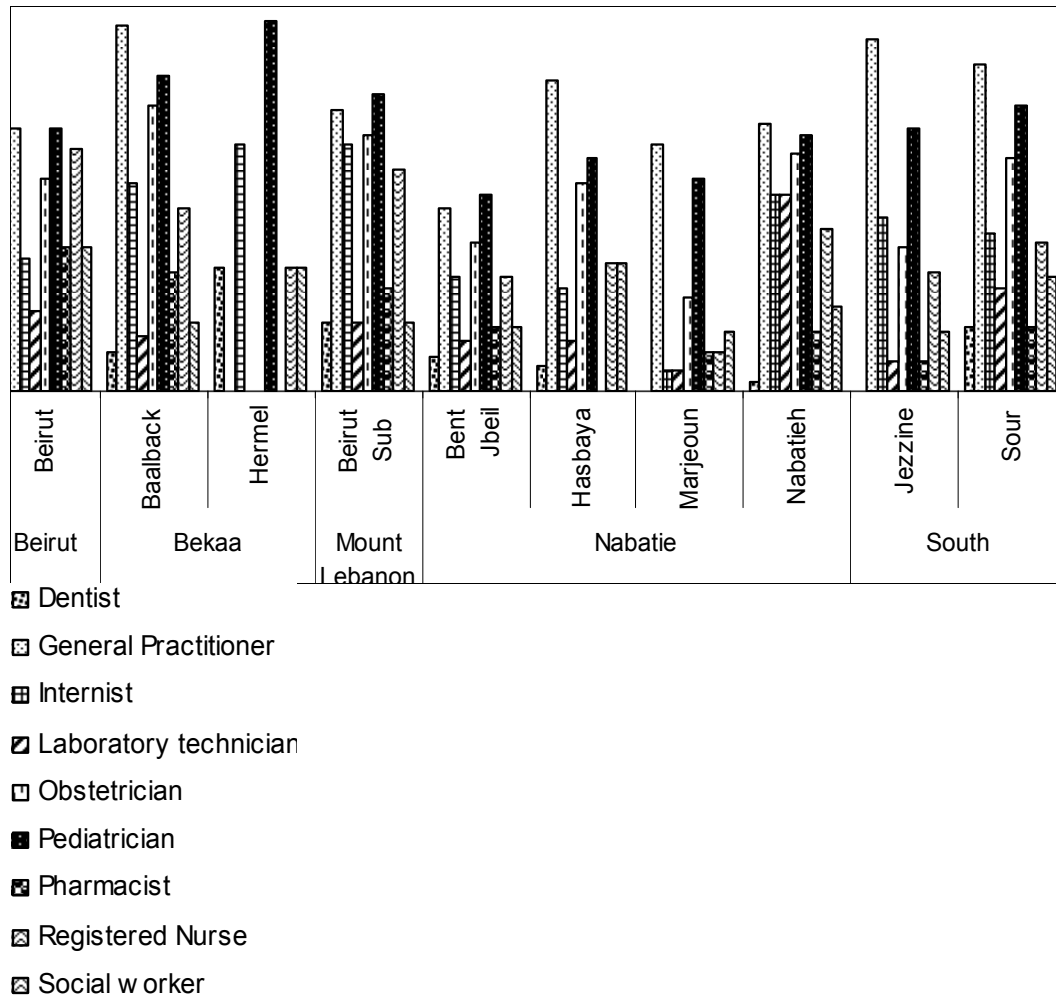
As clearly addressed in Table 5, Human resources was a major gap in the affected areas, as only 50% of the PHC has a General practitioners as a service provider, and a sever shortage in other specialties with major gap in obstetric and surgical fields, and the qualified nursing staff was a 75% shortage of the required for the operation of the PHC, and that shortage affect both the southern region and also the northern, and eastern one.

Table (6) Human Resources Availability at Assessed Outpatients Facilities

	Beirut Beirut (n=50)	Jezzin (n=17)	South	Sour (n=53)	Hermel (n=4)	Bekaa Baalbeck (n=39)
Dentist						
No	48 (100%)	17 (100%)		46 (87%) 7 (13%)	3 (75%) 1 (25%)	33 (92%) 3 (8%)
ENT						
No					1 (25%)	1 (25%)
Yes	1 (100%)	17 (100%)		53 (100%)	3 (75%)	3 (75%)
Eyes						
No					0	1 (12%)
Yes	1 (100%)	17 (100%)		53 (100%)		7 (88%)
General Practitioner					0	
No	23 (47%)	5 (29%)		18 (34%) 35 (66%)		10 (26%)
Yes	26 (53%)	12 (71%)				29 (74%)
Health Educator					0	
No	41 (84%)	16 (94%)		44 (83%) 9 (17%)		34 (92%) 3 (8%)
Yes	8 (16%)	1 (6%)				
Internist						
No	36 (73%)	11 (65%)		36 (68%) 17 (32%)	2 (50%) 2 (50%)	22 (58%) 16 (42%)
Yes	13 (27%)	6 (35%)				
Laboratory technician					0	
No	41 (84%)	16 (94%)		42 (79%) 11 (21%)		32 (89%) 4 (11%)
Yes	8 (16%)	1 (6%)				
Midwife					0	
No	42 (86%)	16 (94%)		44 (83%) 9 (17%)		27 (75%) 9 (25%)
Yes	7 (14%)	1 (6%)				
Obstetrician					0	
Yes	28 (57%)	12 (71%)		28 (53%) 25 (47%)		16 (42%) 22 (58%)
No	21 (43%)	5 (29%)				
Pediatrician						
No	23 (47%)	8 (47%)		22 (42%) 31 (58%)	1 (25%) 3 (75%)	14 (36%) 15 (64%)
Yes	26 (53%)	9 (53%)				
Pharmacist					0	

	Beirut Beirut (n=50)	Jezzin (n=17)	South	Sour (n=53)	Hermel (n=4)	Bekaa Baalbeck (n=39)
No	35 (71%)	16 (94%)		46 (87%)		28 (76%)
Yes	14 (29%)	1 (6%)		7 (13%)		9 (24%)
Physiotherapist						
No	44 (90%)			50 (94%)	0	34 (94%)
Yes	5 (10%)	17 (100%)		3 (6%)		2 (6%)
Practical Nurse						
No	29 (59%)	9 (53%)		35 (66%)	3 (75%)	21 (54%)
Yes	20 (41%)	8 (47%)		18 (34%)	1 (25%)	18 (46%)
Radiographer						
No	43 (88%)	16 (94%)		48 (91%)	3 (75%)	31 (86%)
Yes	6 (12%)	1 (6%)		5 (9%)	1 (25%)	5 (14%)
Registered Nurse						
No	25 (51%)	13 (76%)		37 (70%)	3 (75%)	24 (63%)
Yes	24 (49%)	4 (24%)		16 (30%)	1 (25%)	14 (37%)
Skin						
No						1 (17%)
Yes		17 (100%)		53 (100%)	1 (100%)	5 (83%)
Social worker						
No	35 (71%)	15 (88%)		41 (77%)	3 (75%)	31 (86%)
Yes	14 (29%)	2 (12%)		12 (23%)	1 (25%)	5 (14%)
Surgery						
No	48 (100%)	17 (100%)		49 (92%)	2 (50%)	34 (94%)
Yes				4 (8%)	2 (50%)	2 (6%)

Figure (8) Human resources available in outpatient facilities



Service delivered during the last hostilities

Services provided during the war for women and children include antenatal, delivery, and postnatal care, emergency obstetric care, and well child care such as immunizations, however, very few facilities are offering skilled care. Less than a quarter of facilities are providing antenatal or postpartum care, and even fewer, about ten percent, are providing delivery and emergency obstetric services. In addition, less intensive nutritional/breast-feeding and family planning counselling are provided at less than 20% of facilities. Immunization and well-child care are provided by slightly less than a third of the facilities. The scope and quality of these services is also unspecific and probably variable between sites.

District wise, only one, provides ANC through about a third of its facilities; other districts range from 11%-39%. Deliveries services are absent in two districts, and are only available in one or two facilities in all but one district. Emergency obstetric care (EmOC) care has a similar pattern with five districts functioning at about 10% or less. There is a great variation among districts in FP services ranging from 2% - 76% of facilities. Among the functioning units, only 23% of the total appeared to provide antenatal care but the package is unclear. It was reported that only less than 10% of those provided delivery care to pregnant women. Similarly, less than 10% was reported to provide emergency obstetric care, which is unclear whether it is an essential or comprehensive Obstetric care. About 20% of the units appear to provide postpartum care, which is where the majority of pregnancy related complications occur. Similarly, in about 20% health facilities provide well baby care, while family planning services on the other hand are provided in about 15% of the functioning centres.

Meanwhile the diagnostic service was an addressed gap in most of the regions, which include laboratory facilities with a direct impact on the quality of diagnosis and the services provided by the health centres.

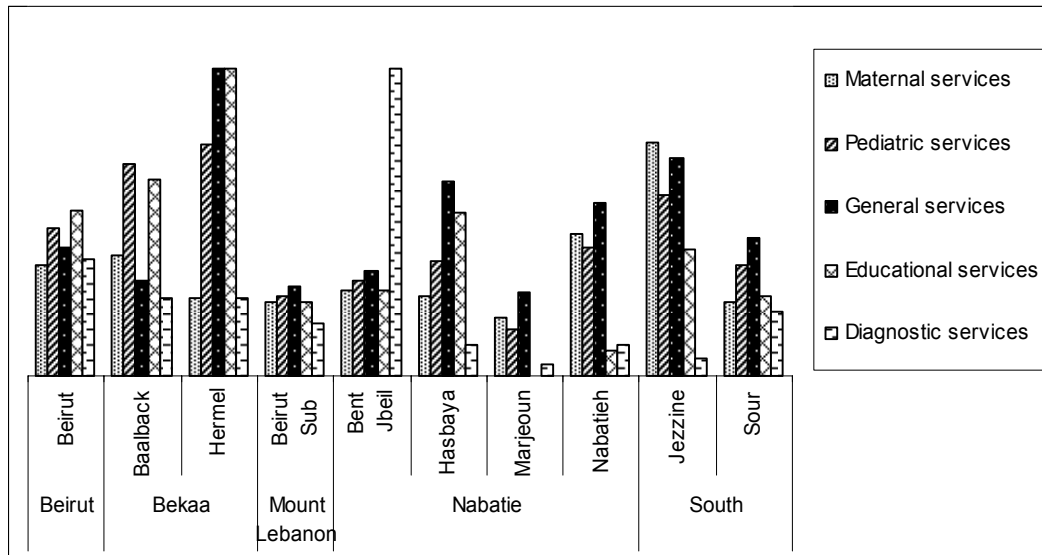
Table (7) Services Availability at Assessed Outpatients Facilities

	Mount Lebanon Beirut Suburbs	Bent Jbeil	Nabatieh Hasbaya	Marjayoun	Nabatieh
Maternal Services					
No	32 (76%)	21 (72%)	14 (74%)	21 (81%)	26 (54%)
Yes	10 (24%)	8 (28%)	5 (26%)	5 (19%)	22 (46%)
Pediatric services					
No	31 (74%)	20 (69%)	12 (63%)	22 (85%)	28 (58%)
Yes	11(26%)	9 (31%)	7 (37%)	4 (15%)	20 (42%)
General consultation services					
No	30 (71%)	19 (66%)	7 (37%)	19 (73%)	21 (44%)
Yes	12 (29%)	10 (34%)	12 (63%)	7 (27%)	27 (56%)
Educational services					
No	32 (76%)	21 (72%)	9 (47%)	26 (100%)	44 (92%)
Yes	10 (24%)	8 (28%)	10 (53%)		4 (8%)
Diagnostic services					
No	35 (83%)	29 (100%)	17 (90%)	25 (96%)	43 (90%)
Yes	7 (17%)		2 (10%)	1 (4%)	5 (10%)

Table (8) Services Availability at Assessed Outpatients Facilities

	Beirut Beirut	Jezzin	South	Sour	Hermel	Bekaa Baalbeck
Maternal Services						
No	32 (64%)	4 (24%)		40 (76%)	3 (75%)	22 (61%)
Yes	18 (36%)	13 (76%)		13 (24%)	1 (25%)	14 (39%)
Pediatric services						
No	26 (52%)	7 (41%)		34 (64%)	1 (25%)	11 (31%)
Yes	24 (48%)	10 (59%)		19 (36%)	3 (75%)	25 (69%)
General consultation						
No	29 (58%)	5 (29%)		29 (55%)	4 (100%)	25 (69%)
Yes	21 (42%)	12 (71%)		24 (45%)		11 (31%)
Educational services						
No	23 (46%)	10 (59%)		39 (74%)		13 (36%)
Yes	27 (54%)	7 (41%)		14 (26%)	4 (100%)	23 (64%)
Diagnostic services						
No	31 (62%)	16 (94%)		42 (79%)	3 (75%)	27 (75%)
Yes	19 (38%)	1 (6%)		11 (21%)	1 (25%)	9 (25%)

Figure (9) Services provided during war in outpatient facilities



PHC with no information was mainly due to refusal, followed by unreachable mainly due to road conditions, most of these centers were owned by municipality, with major concentration in Beirut as in table 9.

Table (9) Characteristics of Outpatients Facilities with No Information

	Does Not Exist	No Response	Unreachable	Missing Record
Ownership				
Ministry of Health		2 (8%)	1 (5%)	1 (33%)
Ministry of Social Affairs	1 (11%)	2 (8%)	3 (15%)	0
Municipality	0	1 (4%)	7 (35%)	0
Non Governmental Organizations	7 (78%)	19 (76%)	8 (40%)	2 (67%)
Not Defined	1 (11%)	1 (4%)	1	0
District				
Baalbeck	0	2 (8%)	0	0
Beirut	1 (11%)	7 (28%)	9 (45%)	3 (100%)
Beirut Suburbs	2 (22%)	3 (12%)	1 (5%)	
Bent Jbeil	0	0	2 (10%)	
Hasbaya	1 (11%)	0	0	
Jezzin	0	3 (12%)	0	
Marjayoun	5 (56%)	1 (4%)	1 (5%)	
Nabatieh	0	7 (28%)	2 (10%)	
Sour	0	2 (8%)	5 (25%)	
Road Accessibility				
No	NA	23 (92%)	19 (95%)	3 (100%)
Yes		2 (8%)	1 (5%)	0
Total	9	25	20	3

NA: Not Applicable

2. Assessment of the hospitals

Referring to direct physical damage, secondary health care facilities were in a better position than the Primary Health Centres (PHC). 33% of total damaged hospitals in southern Sour, while in Marjayoun and Bent Jbeil where were the major destruction of PHC the Hospital totally damage was not more than 22%, which explain the surgical emergency care provision to victim of war during the hostilities.

Although the total destruction had a low percentage in Marjayoun and Bent Jbeil, but the hospital were not functioning due to destruction of the support resources as power supply, water, and shortage in drugs.

Hasbaya as it has only one hospital and was not damaged, it was the one of the main service provider to the displaced population as it has a functioning power, and water supply, with a 24 access to drugs, while it is one of the gaps in all the other hospitals, which have a direct effect on the provision of quality emergency care and this gap exist in all the region, with no relation to the ownership of the facility , but it could be explained by the lack of pharmacist .

In contrary to the PHC the ownership of the hospital were mainly by MOPH in the affected areas in the south while it is shared with the private sector in Beirut, Sour, and Nabatieh.

The availability of power source was a major gap in Marjayoun, Nabatieh, and Bent Jbeil with a shortage in the alternative sources as generator and the fuel for operating the alternative source, the shortage of fuel was addressed in Nabatieh, Sour, Mountain Lebanon, and Baalbeck.

Water supply , in spite of the fair access to running water in Baalbeck, Sour, the water supply either for running water and drinking water was a serious shortage specially in Marjayoun, and Bent Jbeil which matching the magnitude of infra-structure damages in this region.

The damaged sewerage system and leakage of the pipeline was registered in Bent Jbeil and marjeon, which give an alarming indicator for the fragility of the environment, and the public health risk when combined by destructed water supply system.

Road access to the hospitals registered as challenge in Bent Jbeil, Marjayoun, and even Hasbaya, mainly due to UXO.

Table (10) Main Characteristics of Hospitals Assessed

	Mount Lebanon Beirut Suburbs (n=8)	Bent Jbeil (n=3)	Nabatieh Hasbaya (n=1)	Marjayoun (n=2)	Nabatieh (n=5)
Functioning Status					
Functioning	3 (38%)	0	1 (100%)	0	3 (60%)
Partially functioning	2 (25%)	2 (67%)	0	0	0
Not Functioning	1 (12%)	1(33%)	0	2 (100%)	1 (20%)
No Information*	2 (25%)	0	0	0	1 (20%)
Ownership**					
Ministry of Health	0	1 (50%)	1 (100%)	1(100%)	1 (25%)
Military	0	0	0	0	0
Private	5 (71%)	1 (50%)	0	0	3 (75%)
Not defined	2(29%)	0	0	0	1(25%)
Total number of beds**	507	84	54	82	272
Availability of drugs on 24h Basis					
Yes	3 (37%)	1 (33%)	1 (100%)	0	2 (40%)
No	5 (63%)	2 (67%)	0	2 (100%)	3 (60%)
Physical Damage					
Severe damage	2 (25%)	1 (33%)	0	0	1 (20%)
Minor damage	2 (25%)	0	0	0	2 (40%)
No damage	4 (50%)	2 (67%)	1 (100%)	2 (100%)	2 (40%)

* No Information, includes unreachable, no response & does not exist hospitals

** Out of 82 hospitals, ownership was recorded for 57 thus percentages were calculated based on the collected data

Table (11) Main Characteristics of Hospitals Assessed-2

	Beirut Beirut (n=28)	Saida (n=14)	South	Sour (n=6)	Hermel (n=4)	Bekaa Baalbeck (n=11)
Functioning Status						
Functioning	11 (39%)	9 (64%)		5 (83%)	3 (75%)	5 (46%)
Partially functioning	3 (11%)	0		0	0	2 (18%)
Not Functioning	9 (32%)	4 (29%)		1 (17%)	1 (25%)	2 (18%)
No Information*	5 (18%)	1 (7%)		0	0	2 (18%)
Ownership**						
Ministry of Health	1 (6%)	0		1 (20%)	1 (33%)	1 (13%)
Military	1 (6%)	1 (11%)		4 (80%)	0	0
Private	14 (76%)	8 (89%)		0	2 (66%)	7 (87%)
Not Defined	0	0		0	0	0
Total number of beds**	1321	1004		398	108	509
Availability of drugs						
Yes	15 (52%)	3 (20%)		5 (83%)	1 (25%)	3 (27%)
No	14 (48%)	12 (80%)		1 (17%)	3 (75%)	8 (73%)
Physical Damage						
Severe damage	0	1 (7%)		2 (33%)	0	1 (9%)
Minor damage	0	0		1 (17%)	0	0
No Damage	28 (100%)	13 (93%)		3 (50%)	4 (100%)	10 (91%)

*No Information: Include Unreachable, no response & does not exist Hospitals

** Out of 82 hospitals, ownership was recorded for 57 thus percentages were calculated based on the collected data

Figure (10) Hospitals distribution by functioning status

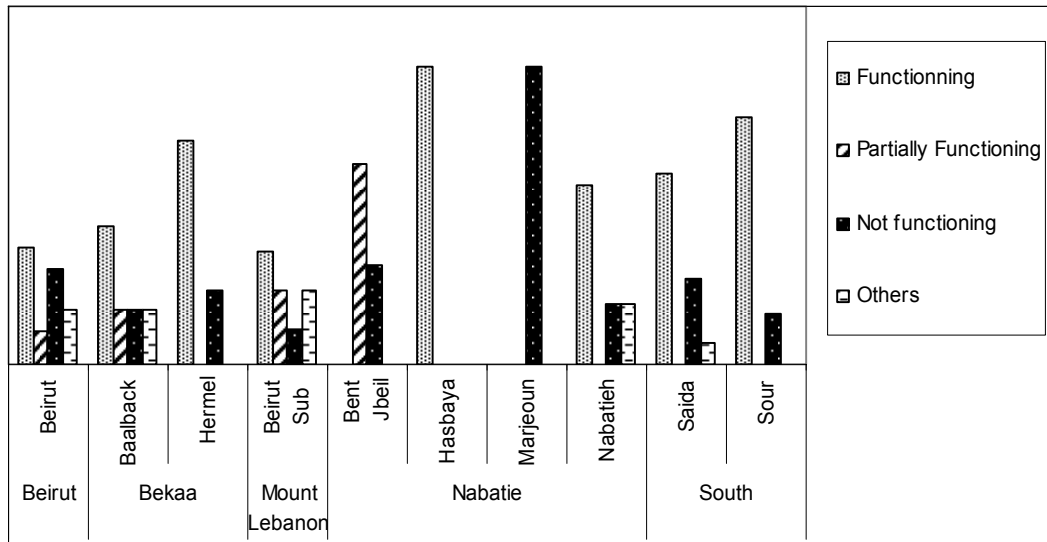


Figure (11) Hospitals distribution by ownership

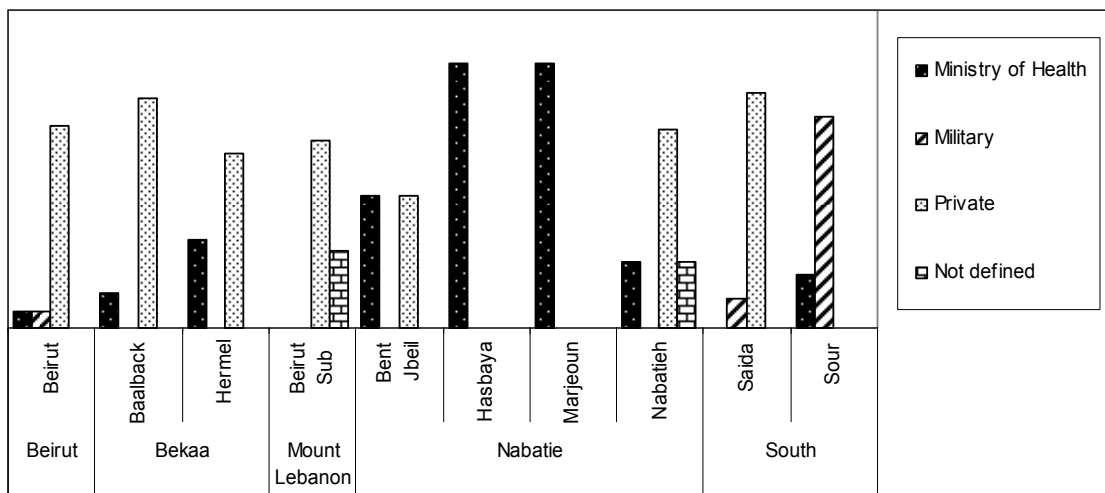


Figure (12) Hospitals distribution by road accessibility

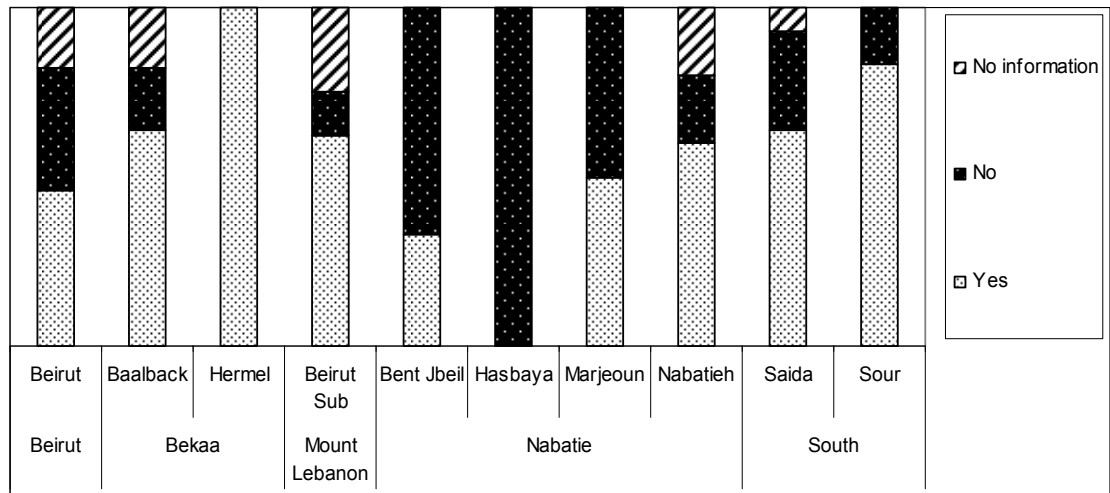


Figure (13) Hospitals distribution by physical damage

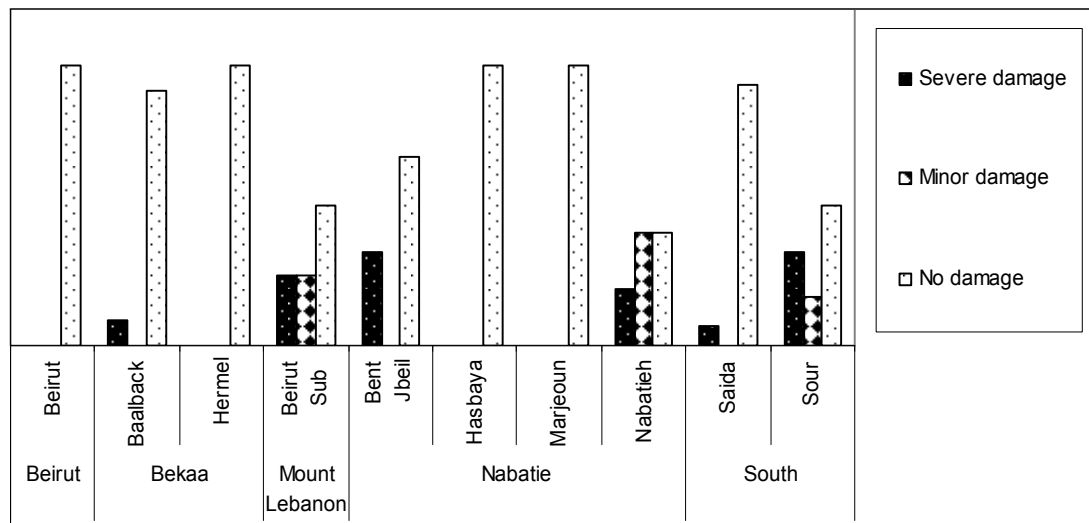


Figure (14) Shortage of power resources at assessed hospitals

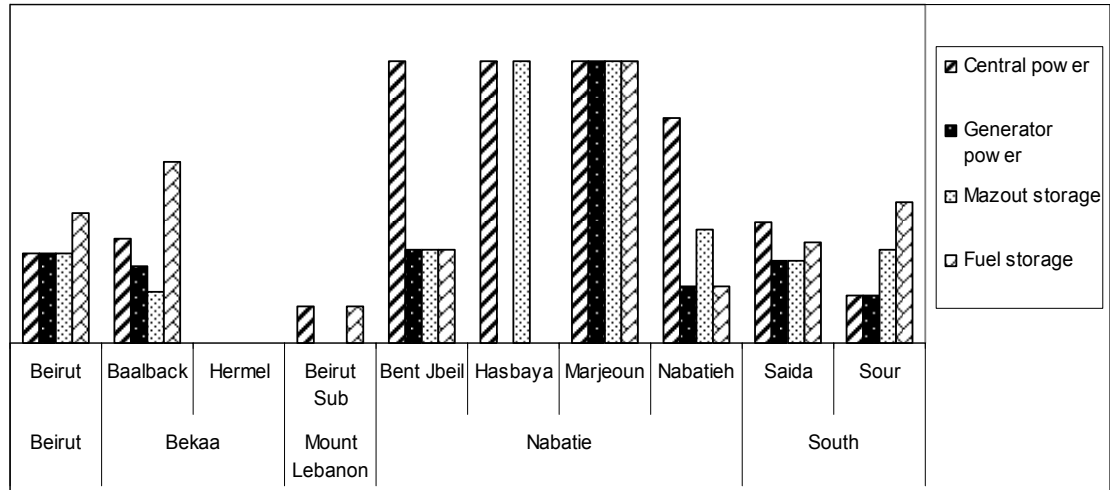


Figure (15) Shortage of water / sewerage at assessed hospitals

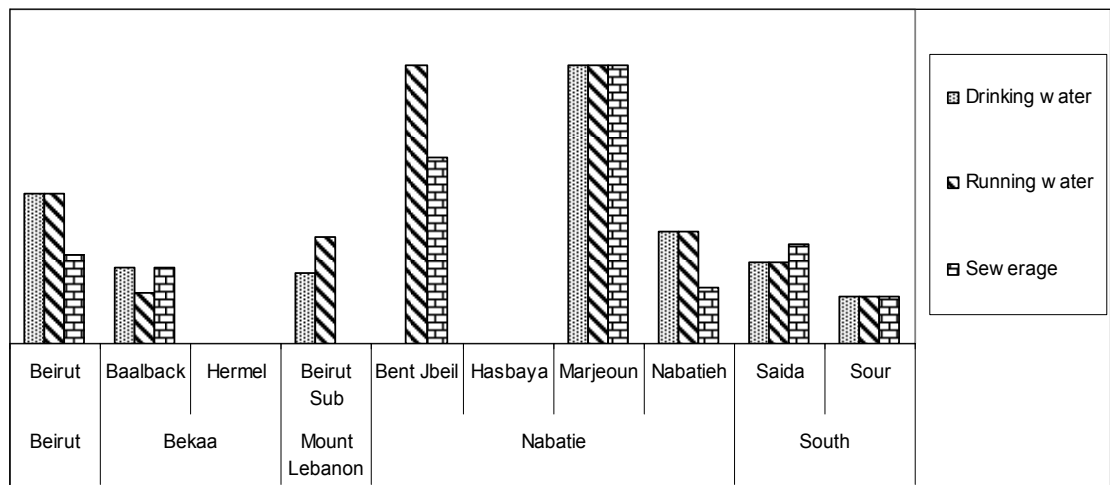


Table (12) Resources Availability at Assessed Hospitals

	Mount Lebanon Beirut Suburbs			F	Bent Jbeil*		Hasbaya**			Nabatieh Marjayoun*			Nabatieh		
	F (n=3)	P (n=2)	N (n=1)		F	P (n=2)	N (n=1)	F (n=1)	P	N	F	P	N (n=2)	F (n=3)	P (n=0)
Transportation															
Ambulance	1 (33%)	2 (100%)	0		1 (50%)	0	0					0	2 (67%)		0
Power resources															
Central power	2 (67%)	2 (100%)	1 (100%)		0	0	0					0	0 3 (100%)		0 0
Generator	3 (100%)	2 (100%)	1 (100%)		2 (100%)	0	1 (100%)					0	2 (67%)		0
Mazout storage	3 (100%)	2 (100%)	1 (100%)		2 (100%)	0	0					0	3 (100%)		0
Fuel storage	2 (67%)	2 (100%)	1 (100%)		2 (100%)	0	1 (100%)					0			
Water															
Running water	2 (67%)	1 (50%)	1 (100%)		2 (100%)	1 (100%)	1 (100%)					0	2 (67%)		0
Drinking water	1 (33%)	1 (50%)	1 (100%)		0	0	1 (100%)					0	2 (67%)		0
Sewerage	3 (100%)	2 (100%)	1 (100%)		1 (50%)	0	1 (100%)					0	3 (100%)		0
Medical Waste Disposal	3 (100%)	2 (100%)	1 (100%)		0	0	1 (100%)					0	3 (100%)		0
Blood Bank Services	2 (67%)	1 (50%)	1 (100%)		0	0	0					0	0		0
Renal Dialysis Services	2 (67%)	0	1 (100%)		0	0	0					0	1 (33%)		0
Road Accessibility	3 (100%)	1 (50%)	1 (100%)		1 (50%)	0	0					1 (50%)	3 (100%)		0

* At bent Jbeil & Marjayoun there are no hospitals fully functioning

**At Hasbaya there is one functioning hospital

Table (13) Resources Availability at Assessed Hospitals

	Beirut			South			Sour		Hermel		Bekaa		Baalbeck		
	F (n=11)	P (n=3)	N (n=9)	F (n=9)	P (n=0)	N (n=4)	F (n=5)	P (n=0)	N (n=1)	F (n=3)	P (n=0)	N (n=0)	F (n=5)	P (n=2)	N (n=2)
Transportation															
Ambulance	5 (45%)	1 (33%)	0	3 (33%)		0	2 (40%)		0	1 (33%)			4 (80%)	2 (100%)	0
Power resources															
Central power	10(91%)	3	1	7		0	5 (100)		0	3			3	2	0
Generator	10	(100%)	(11%)	(78%)		0	5		0	(100%)			(60%)	(100%)	0
Mazout storage	(91%)	3	1	9		0	(100%)		0	3			4	2	0
Fuel storage	10	(100%)	(11%)	(100%)		0	4		0	(100%)			(80%)	(100%)	0
	(91%)	3	1	9			(80%)			3			5	2	
	7 (64%)	(100%)	(11%)	(100%)			3			(100%)			(100%)	(100%)	
		2	1	8			(60%)			3			2	0	
		(67%)	(11%)	(89%)						(100%)			(40%)		
Water															
Running water	10	2	1	9		0	5		0	3			4	2	0
Drinking water	(91%)	(67%)	(11%)	(100%)		0	(100%)		0	(100%)			(80%)	(100%)	
	10	2	1	9			5			3			5	2	
	(91%)	(67%)	(11%)	(100%)			(100%)			(100%)			(100%)	(100%)	
Sewerage	10	3	1	8		0	5		0	3			5	2	0
	(91%)	(100%)	(11%)	(89%)			(100%)			(100%)			(100%)	(100%)	
Medical Waste Disposal	9 (82%)	3	0	7		0	1		0	3			4	2	0
		(100%)		(78%)			(20%)			(100%)			(80%)	(100%)	
Blood Bank Services	4 (36%)	3	0	4		0	2		0	2			3	1	0
		(100%)		(44%)			(40%)			(67%)			(60%)	(50%)	
Renal Dialysis Services	5 (45%)	2	0	5		0	4		0	1			2	1	0
		(67%)		(56%)			(80%)			(33%)			(40%)	(50%)	
Road Accessibility	10	3	0	9		0	5		0	3			5	2	0
	(91%)	(100%)		(100%)			(100%)			(100%)			(100%)	(100%)	

Table (14) Human Resources Availability at Assessed Hospitals

	Mount Lebanon Beirut Suburbs	Bent Jbeil	Nabatieh Hasbaya	Marjayoun	Nabatieh
Anaesthesiologist					
No	4 (50%)	2 (67%)		2 (100%)	2 (40%)
Yes	4 (50%)	1 (33%)	1 (100%)		3 (60%)
Cardiologist					
No	4 (50%)	1 (33%)		2 (100%)	2 (40%)
Yes	4 (50%)	2 (67%)	1 (100%)		3 (60%)
ENT Specialist					
No	6 (75%)	3 (100%)		2 (100%)	2 (40%)
Yes	2 (25%)		1 (100%)		3 (60%)
General practitioner					
No	4 (50%)	1 (33%)		2 (100%)	2 (40%)
Yes	4 (50%)	2 (67%)	1 (100%)		3 (60%)
Health educator					
No	6 (75%)	3 (100%)	1 (100%)	2 (100%)	4 (80%)
Yes	2 (25%)				1 (20%)
ICU Intensivist					
No	7 (87%)	2 (67%)	1 (100%)	2 (100%)	2 (40%)
Yes	1 (13%)	1 (33%)			3 (60%)
Internist					
No	4 (50%)	2 (67%)	1 (100%)	2 (100%)	3 (60%)
Yes	4 (50%)	1 (33%)			2 (40%)
Laboratory technician					
No	5 (63%)	2 (67%)		2 (100%)	2 (40%)
Yes	3 (37%)	1 (33%)	1 (100%)		3 (60%)
Midwife					
No	4 (50%)	2 (67%)			3 (60%)
Yes	4 (50%)	1 (33%)	1 (100%)	2 (100%)	2 (40%)
Nephrologists (Renal)					
No	4 (50%)	3 (100%)		2 (100%)	3 (60%)
Yes	4 (50%)		1 (100%)		2 (40%)
Obstetrician					
No	5 (63%)	2 (67%)		2 (100%)	2 (40%)
Yes	3 (37%)	1 (33%)	1 (100%)		3 (60%)

	Mount Lebanon Beirut Suburbs	Bent Jbeil	Nabatieh Hasbaya	Marjayoun	Nabatieh
Oncologist (Haematology)					
No	4 (50%)	3 (100%)	1 (100%)	2 (100%)	3 (60%)
Yes	4 (50%)				2 (40%)
Ophthalmologist					
No	5 (63%)	2 (67%)		2 (100%)	2 (40%)
Yes	3 (37%)	1 (33%)	1 (100%)		3 (60%)
Orthopaedic					
No	3 (75%)	2 (100%)		1 (100%)	2 (100%)
Yes	1 (25%)				
Paediatrician					
No	4 (50%)	1 (33%)		2 (100%)	2 (40%)
Yes	4 (50%)	2 (67%)	1 (100%)		3 (60%)
Pharmacist					
No	4 (50%)	2 (67%)		2 (100%)	2 (40%)
Yes	4 (50%)	1 (33%)	1 (100%)		3 (60%)
Physiotherapist					
No	6 (75%)	3 (100%)	1 (100%)	2 (100%)	3 (60%)
Yes	2 (25%)				2 (40%)
Practical Nurse					
No	5 (63%)	1 (33%)		2 (100%)	2 (40%)
Yes	3 (37%)	2 (67%)	1 (100%)		3 (60%)
Radiographer					
No	4 (50%)	2 (67%)		2 (100%)	2 (40%)
Yes	4 (50%)	1 (33%)	1 (100%)		3 (60%)
Registered Nurse					
No	5 (63%)	1 (33%)		2 (100%)	2 (40%)
Yes	3 (37%)	2 (67%)	1 (100%)		3 (60%)
Social Worker					
No	8 (100%)	3 (100%)	1 (100%)	2 (100%)	3 (60%)
Yes					2 (40%)
Surgery					
No	7 (87%)	2 (100%)		1 (100%)	2 (40%)
Yes	1 (13%)				3 (60%)

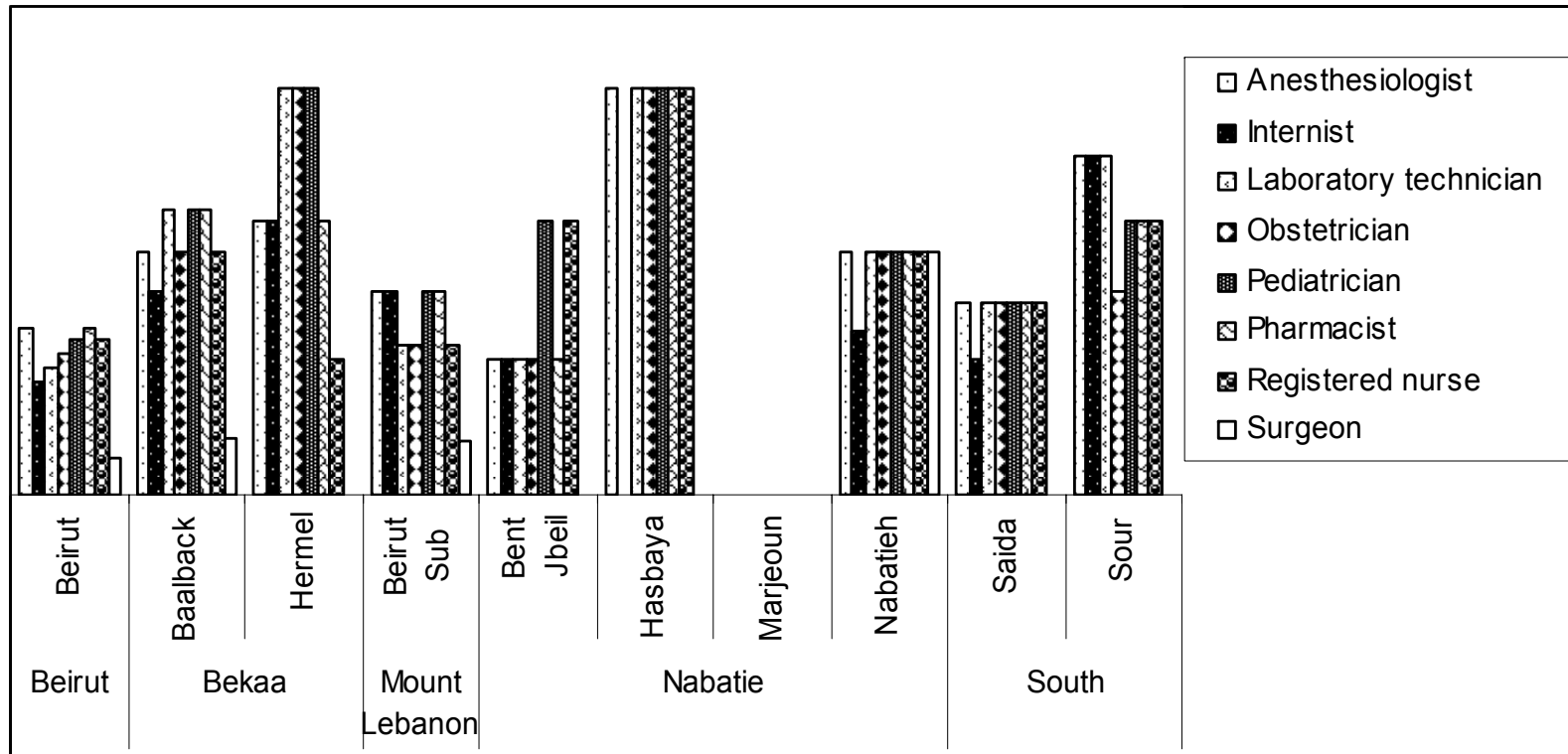
Table (15) Human Resources Availability at Assessed Hospitals

	Beirut Beirut	Saida	South	Sour	Hermel	Bekaa	Baalbeck
Anaesthesiologist							
No	17 (59%)	8 (53%)		1 (17%)	1 (33%)		4 (40%)
Yes	12 (41%)	7 (47%)		5 (83%)	2 (67%)		6 (60%)
Cardiologist							
No	18 (62%)	8 (53%)		1 (17%)			3 (30%)
Yes	11 (38%)	7 (47%)		5 (83%)	3 (100%)		7 (70%)
ENT Specialist							
No	18 (62%)	8 (53%)		2 (33%)			5 (50%)
Yes	11 (38%)	7 (47%)		4 (67%)	3 (100%)		5 (50%)
General practitioner							
No	20 (69%)	8 (53%)		2 (33%)			5 (50%)
Yes	9 (31%)	7 (47%)		4 (67%)	3 (100%)		5 (50%)
Health educator							
No	26 (90%)	13 (87%)		5 (83%)	3 (100%)		8 (80%)
Yes	3 (10%)	2 (13%)		1 (17%)			2 (20%)
ICN Intensivist							
No	24 (83%)	10 (67%)		2 (33%)	3 (100%)		5 (50%)
Yes	5 (17%)	5 (33%)		4 (67%)			5 (50%)
Internist							
No	21 (72%)	10 (67%)		1 (17%)	1 (33%)		5 (50%)
Yes	8 (28%)	5 (33%)		5 (83%)	2 (67%)		5 (50%)
Laboratory technician							
No	20 (69%)	8 (53%)		1 (17%)			3 (30%)
Yes	9 (31%)	7 (47%)		5 (83%)	3 (100%)		7 (70%)
Midwife							
No	22 (76%)	9 (60%)		3 (50%)	1 (33%)		3 (30%)
Yes	7 (24%)	6 (40%)		3 (50%)	2 (67%)		7 (70%)
Nephrologists (Renal)							
No	18 (62%)	8 (53%)		3 (50%)	3 (100%)		4 (40%)
Yes	11 (38%)	7 (47%)		3 (50%)			6 (60%)

	Beirut Beirut	Saida	South	Sour	Hermel	Bekaa	Baalbeck
Obstetrician							
No	19 (65%)	8 (53%)		3 (50%)			4 (40%)
Yes	10 (35%)	7 (47%)		3 (50%)	3 (100%)		6 (60%)
Oncologist (Haematology)							
No	20 (69%)	10 (67%)		2 (33%)	2 (67%)		4 (40%)
Yes	9 (31%)	5 (33%)		4 (67%)	1 (33%)		6 (60%)
Ophthalmologist							
No	19 (65%)	9 (60%)		3 (50%)	2 (67%)		3 (30%)
Yes	10 (35%)	6 (40%)		3 (50%)	1 (33%)		7 (70%)
Orthopaedic							
No	15 (94%)	11 (100%)		5 (83%)	3 (100%)		6 (86%)
Yes	1 (6%)			1 (17%)			1 (14%)
Paediatrician							
No	18 (62%)	8 (53%)		2 (33%)			3 (30%)
Yes	11 (38%)	7 (47%)		4 (67%)	3 (100%)		7 (70%)
Pharmacist							
No	17 (59%)	8 (53%)		2 (33%)	1 (33%)		3 (30%)
Yes	12 (41%)	7 (47%)		4 (67%)	2 (67%)		7 (70%)
Physiotherapist							
No	24 (83%)	9 (60%)		4 (67%)	3 (100%)		8 (80%)
Yes	5 (17%)	6 (40%)		2 (33%)			2 (20%)
Practical Nurse							
No	17 (59%)	11 (73%)		3 (50%)	1 (33%)		4 (40%)
Yes	12 (41%)	4 (27%)		3 (50%)	2 (67%)		6 (60%)
Radiographer							
No	19 (65%)	8 (53%)		1 (17%)	1 (33%)		4 (40%)
Yes	10 (35%)	7 (47%)		5 (83%)	2 (67%)		6 (60%)
Registered Nurse							
No	18 (62%)	8 (53%)		2 (33%)	2 (67%)		4 (40%)
Yes	11 (38%)	7 (47%)		4 (67%)	1 (33%)		6 (60%)
Social Worker							
No	27 (93%)	15 (100%)		5 (83%)	3 (100%)		6 (60%)
Yes	2 (7%)			1 (17%)			4 (40%)
Surgery							

	Beirut		South			Bekaa	
	Beirut			Sour			Baalbeck
No	20 (91%)	Saida		5 (100%)	Hermel		6 (86%)
Yes	2 (9%)	12 (100%)			3 (100%)		1 (14%)

Figure (16) Human resources availability at the assessed hospitals



*Others: include mental health, kidney dialysis, physiotherapy & nutrition services

Human Resources in the hospitals

The critical shortage in medical staff is one of the major gap and future challenges to revitalize the health care system at the hospital levels;

- Shortage in certain capacities: registered nurses, Laboratory technicians, pharmacist, Obstetrician, surgeon, special surgery (ENT, Ophthalmology), internist, and anesthesiologist have a global shortage in the majority of the region (mentioned in descending order).
- Mis-distribution: as addressed by availability of surgeon, nephrologists, cardiologist, mainly in Beirut, Hermel and Saida .
- A considerable number of medical staff moved out from the southern areas with start of hostilities, but while it was not indicated in the data collection form, a common comment was registered that the lack of the above mentioned specialties was pre-exist to the hostilities and was worsen by the conflict, which should consider as a point for further clarification while planning the recovery strategy.

Availability of services in the hospitals during the period of hostilities

- The diagnostic and laboratory service had the lower coverage in the affected regions.
- Although the registered shortage of staff in the surgical, obstetric services this services were provided during the conflict period with less no. of staff which indicate the over whelmed staff by the increased work load and less human resources, while the service was less provided in the less intense affected region as Beirut which may explained by staff movement to cover the gap in the high intense district.

Table (16) Services Availability at Assessed Hospitals

	Mount Lebanon Beirut Suburbs	Bent Jbeil	Nabatieh Hasbaya	Marjayoun	Nabatieh
Surgical services					
No	3 (37%)	1 (33%)		2 (100%)	3 (60%)
Yes	5 (63%)	2 (67%)	1 (100%)		2 (40%)
Laboratory services					
No	3 (37%)	3 (100%)		2 (100%)	3 (60%)
Yes	5 (63%)		1 (100%)		2 (40%)
Maternal services					
No	5 (63%)	1 (33%)		2 (100%)	3 (60%)
Yes	3 (37%)	2 (67%)	1 (100%)		2 (40%)
Medical services					
No	5 (63%)	1 (33%)		2 (100%)	3 (60%)
Yes	3 (37%)	2 (67%)	1 (100%)		2 (40%)
Diagnostic services					
No	6 (75%)	3 (100%)	1 (100%)	2 (100%)	5 (100%)
Yes	2 (25%)				
Oncology services					
No	4 (50%)	2 (67%)		2 (100%)	4 (80%)
Yes	4 (50%)	1 (33%)	1 (100%)		1 (20%)
Others*					
No	4 (50%)	2 (67%)	1 (100%)	2 (100%)	2 (40%)
Yes	4 (50%)	1 (33%)			3 (60%)

Table (17) Services Availability at Assessed Hospitals

	Beirut Beirut	Saida	South	Sour	Hermel	Bekaa Baalbeck
Surgical services						
No	19 (65%)	10 (67%)		3 (50%)	1 (33%)	3 (30%)
Yes	10 (35%)	5 (33%)		3 (50%)	2 (67%)	7 (70%)
Laboratory services						
No	21(72%)	10 (67%)		6(100%)	2 (67%)	5 (50%)
Yes	8 (28%)	5 (33%)			1 (33%)	5 (50%)
Maternal services						
No	20 (69%)	10 (67%)		2 (33%)	3 (75%)	5 (50%)
Yes	9 (31%)	5 (33%)		4 (67%)	1 (25%)	5 (50%)
Medical services						
No	21 (72%)	11 (73%)		2 (33%)	1 (33%)	7 (70%)
Yes	8 (28%)	4 (27%)		4 (67%)	2 (67%)	3 (30%)
Diagnostic services						
No	28 (97%)	14 (93%)		6(100%)	3 (75%)	10 (100%)
Yes	1 (3%)	1 (7%)			1 (25%)	
Oncology services						
No	20 (69%)	11 (73%)		4 (67%)	3 (75%)	5 (50%)
Yes	9 (31%)	4 (27%)		2 (33%)	1 (25%)	5 (50%)
Others*						
No	20 (69%)	10 (67%)		2 (33%)	3 (75%)	4 (40%)
Yes	9 (31%)	5 (33%)		4 (67%)	1 (25%)	6 (60%)

*Others: include mental health, kidney dialysis, physiotherapy & nutrition services

Figure (17) Services provided during war at the assessed hospitals

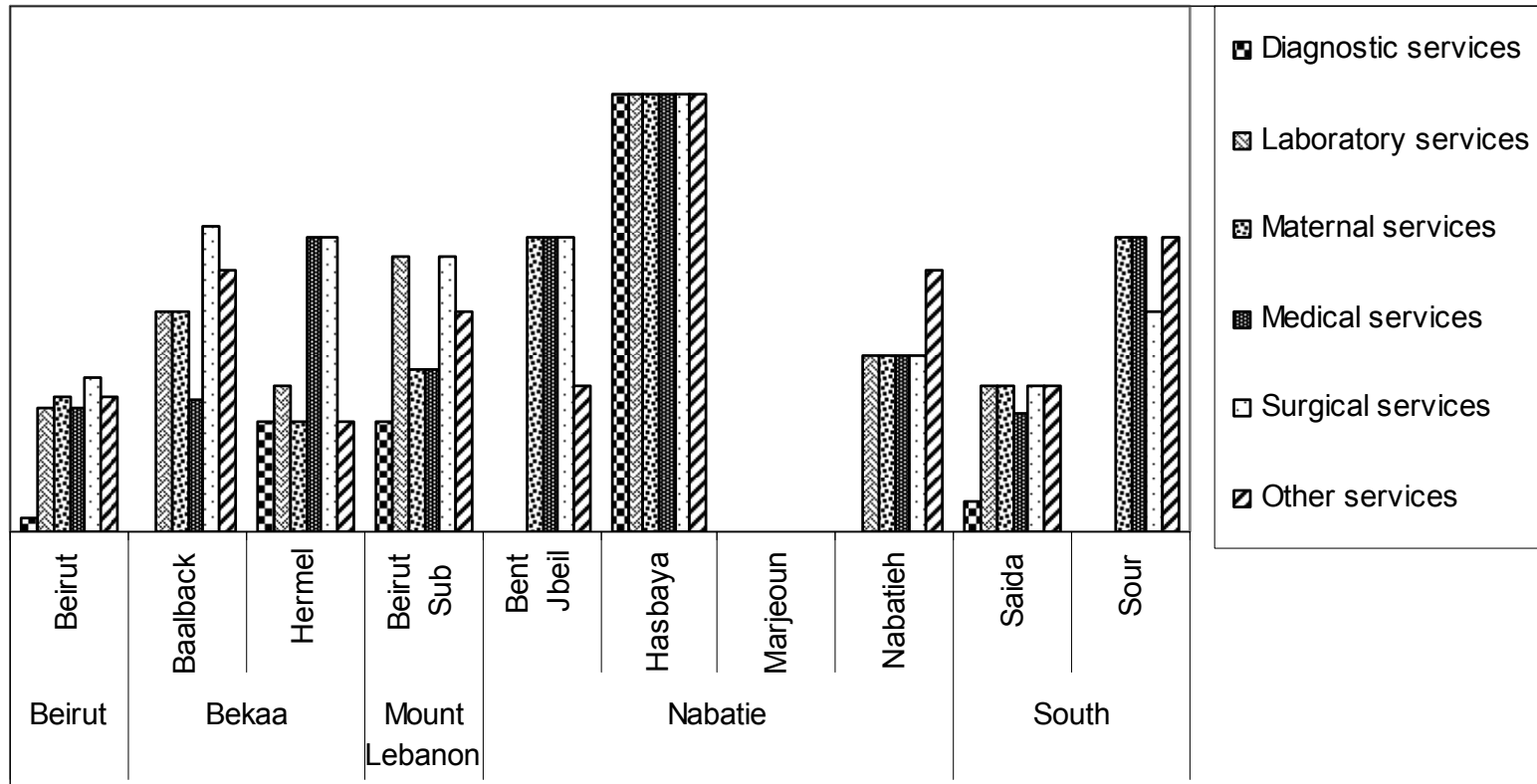


Table (18) Shortage of Medications in Assessed Hospitals

	Mount Lebanon	Nabatieh			
	Beirut Suburbs*	Bent Jbeil	Hasbaya**	Marjayoun***	Nabatieh
Analgesics	37.5	67	0	100	60
Anaesthesia	37.5	33	0	100	60
Antibiotics	37.5	33	0	100	60
Disinfectants	37.5	67	0	100	80
Blood derivatives	37.5	100	0	100	80
Intravenous Solutions	37.5	33	0	100	60
Plasma derivatives	37.5	100	0	100	60
Oral dehydration solutions	50	33	0	100	80
Respiratory	37.5	67	0	100	60
Renal dialysis filters	50	100	0	100	80
Cardiac Drugs	37.5	67	0	100	60
Anti-diabetic	37.5	100	0	100	60
Psychotropic Drugs	50	100	0	100	80

Values are reported in percentages

* Data available for 75% of the hospitals in the area

**There is only one functioning hospital in the area

***No hospitals are functioning in the area

Table (19) Shortage of Medications in Assessed Hospitals

	Beirut	South		Bekaa	
	Beirut*	Saida	Sour	Hermel	Baalbeck*
Analgesics	51	80	33	100	22
Anaesthesia	58	86	33	67	32
Antibiotics	48	80	33	67	32
Disinfectants	48	93	17	100	32
Blood derivatives	72	93	33	100	62
Intravenous Solutions	44	80	33	100	22
Plasma derivatives	58	86	33	100	32
Oral dehydration solutions	65	86	50	100	42
Respiratory	58	80	33	100	22
Renal dialysis filters	75	86	50	100	62
Cardiac Drugs	58	93	33	100	32
Anti-diabetic	54	93	33	100	22
Psychotropic Drugs	78	86	50	100	62

Values are reported in percentages

* Data are missing for 18 % of the hospitals because of refusal

Figure (18) Medications shortage at assessed hospitals

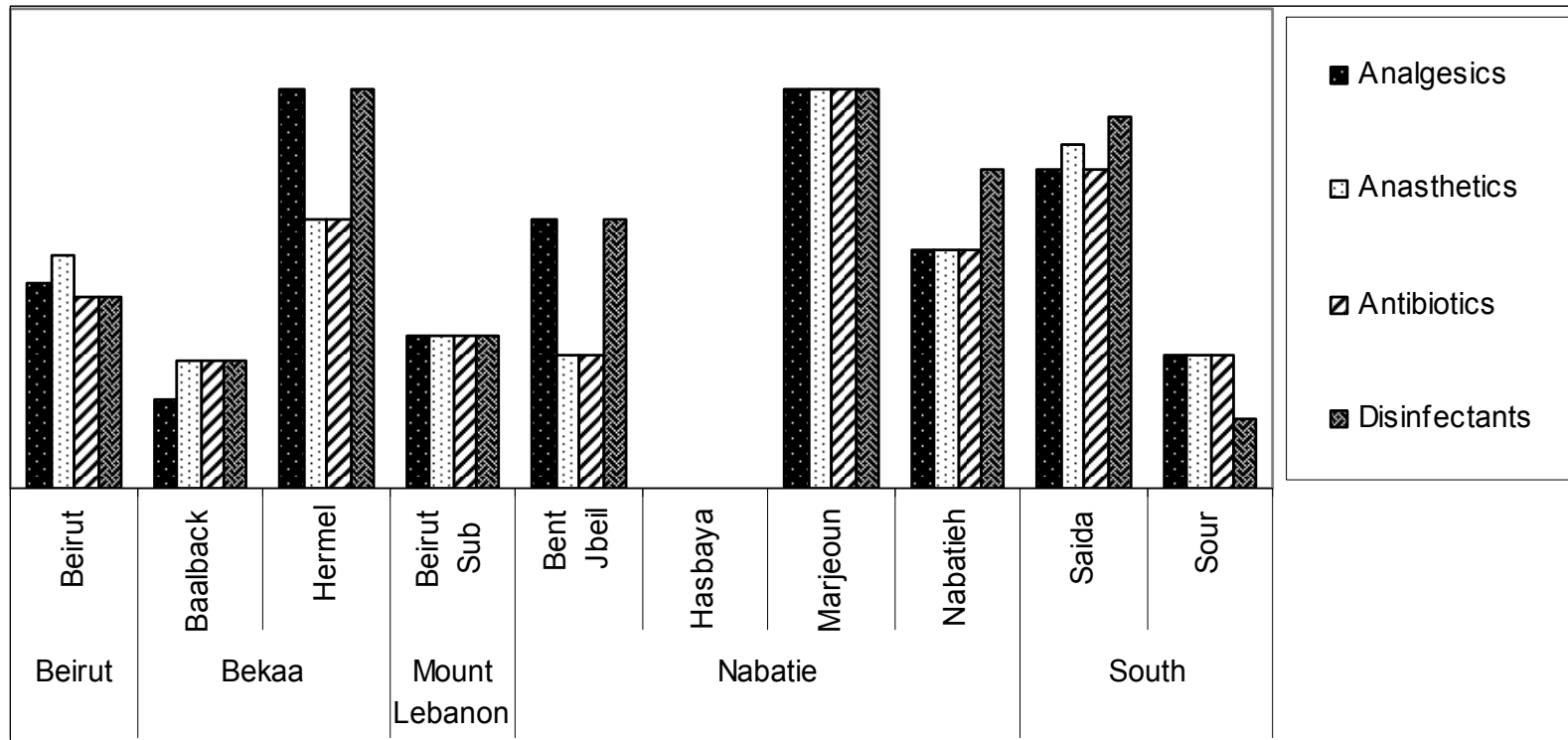
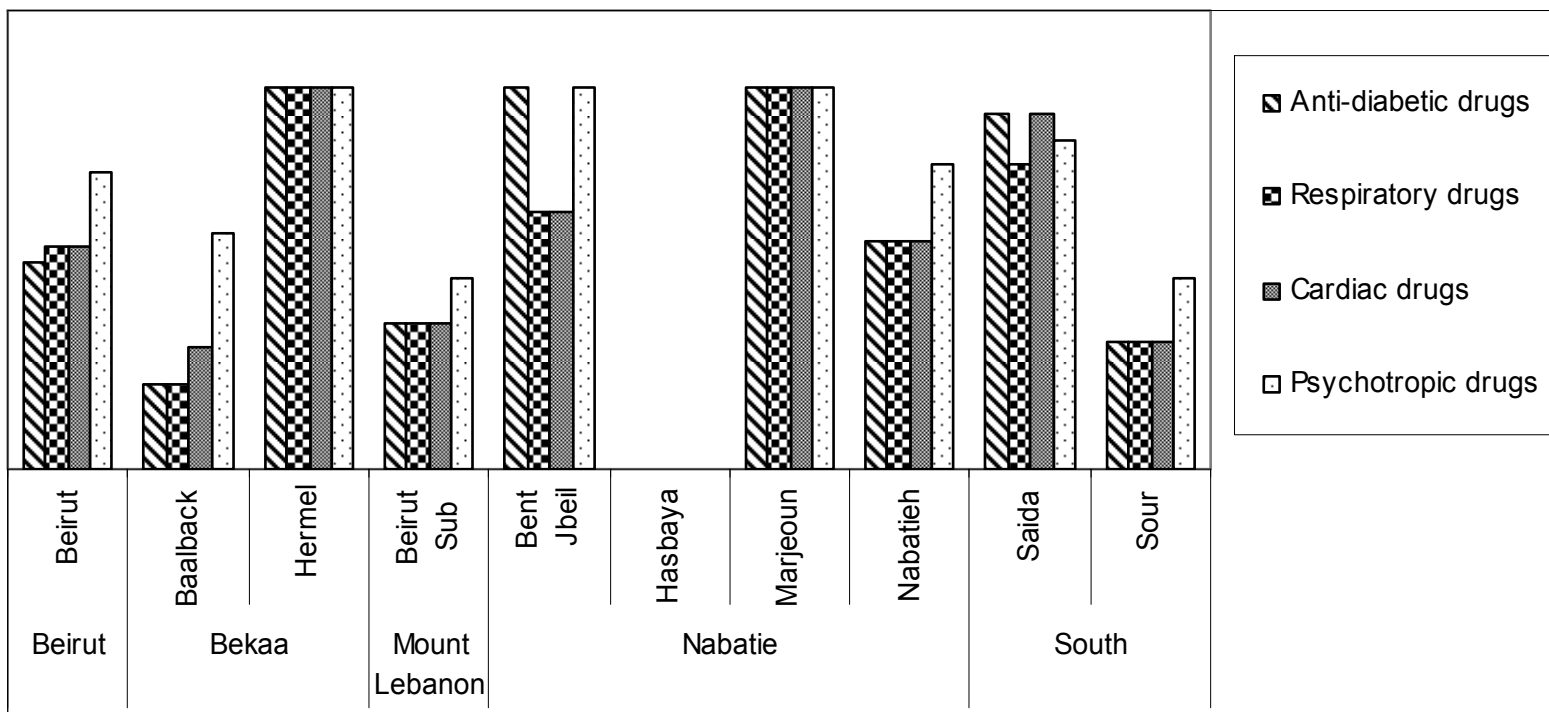


Figure (19) Availability of Medical Drugs



Shortage of drugs

Mainly antibiotic, analgesics, and disinfectant, registered shortages in the hospitals the drugs for diabetic, cardiovascular, and mental illness show a major gap that was in the entire affected district, which indicate a major shortage at the national level with limited pre-positioned buffer stock in the district level.

Table (19) Characteristics of Hospitals with No Information

	Hospital Unvisited	No Response	Missing Record
Ownership			
Private		1 (14%)	1 (50%)
Non Governmental Organization		1 (14%)	0
Not Defined	4	5 (72%)	1 (50%)
District			
Baalbeck	2 (50%)	0	0
Beirut	2 (50%)	3 (43%)	1 (50%)
Beirut Suburbs	0	2 (29%)	0
Nabatieh	0	1 (14%)	0
Saida	0	1 (14%)	1 (50%)
Road Accessibility			
No	4 (100%)	7 (100%)	1 (50%)
Yes	0	0	1 (50%)
Total	4	7	2

Most of the no-response hospitals were in Beirut and the reason for that was the sensitivity of the data as they indicate for the validation team, most of these hospitals are owned by NGOs, or private sector.

Strategic directions for the intervention

The first approach should be a rapid operation, between now and December (?) 2006, concentrated in the affected areas .It should be led by the Ministry of Health, in close cooperation with all pertinent national, local, and international health partners. It should be aimed at ensuring:

- a) Continuity in the provision of essential health services particularly to the most vulnerable including essential PHC and adequate referral to secondary and tertiary health care
- b) Reinforce the capacity of the health system in delivering public health services including epidemiological surveillance and early warning systems for the early detection and control of communicable diseases, immunization and environmental health
- c) Prompt a health system approach to link relief, rehabilitation, recovery and development

The entire operation could be done as an emergency operation run by the Ministry, in support to the local health authorities in the affected areas and should take into strong consideration national Non Governmental Organizations (NGOs) already operative in the health sector. It could encompass the temporary organization of local public health teams, using existing staff of the public sector, from health NGOs and private health care providers as well as individual practitioners.

There would also be a need for strengthening and/or developing the public health infrastructure of the local health authorities .The entire operation would be a way of improving social protection in health for the affected population in the areas that were damaged during the conflict

- A project for revitalization of PHC with ensuring the FREE Access to health care should be addressed in the early recovery phase and a revitalization of the hospital care with a priority for functional rehabilitation and mobilizing resources as Human resources to fill the gap in medical specialties.
- Ensuring safe environment in the health facilities by assuring the quality of drinking water, waste product management, and proper sanitation.

References

- List of Health facilities, MOPH Lebanon, 2005.
- <http://ochaonline.un.org/DocView.asp?DocID=4874>
- <http://ochaonline.un.org/webpage.asp?ParentID=11778&MenuID=11794&Page=2203>
- http://www.who.int/hac/crises/international/middle_east/en/index.html
- [http://ochadms.unog.ch/quickplace/cap/main.nsf/h_Index/Flash_2006_LebanonCrisis/\\$FILE/Flash_2006_LebanonCrisis_SCREEN.pdf?OpenElement](http://ochadms.unog.ch/quickplace/cap/main.nsf/h_Index/Flash_2006_LebanonCrisis/$FILE/Flash_2006_LebanonCrisis_SCREEN.pdf?OpenElement)

Annexes

Annex 1: Needs Assessment Health Facility Questionnaire	Error! Bookmark not defined.
Annex 2: List of health facilities	Error! Bookmark not defined.
Annex 3: List of hospitals	Error! Bookmark not defined.
Annex 4: Saida	Error! Bookmark not defined.
Annex 5: Volunteers	Error! Bookmark not defined.

Annex 1: Needs Assessment Health Facility Questionnaire

Part One: Outpatient Facilities (To include dispensaries, health centers, and hospital outpatient departments)

Governorate (Muhaffazat)
District (Qada')
Town/Locality/Village

Name of the Facility
Address
Telephone
Facsimile
E-Mail

Assessment Team Members
Name and Position of representative(s) from facility providing information
His/Her Cell phone

Date of Assessment

Q1a: Type of outpatient facility

Dispensary | -Health Center |
Hospital outpatient department/ER |

Q1b: Ownership of outpatient facility

Ministry of Health (MOH) | Ministry of Social Affairs (MOSA) |
Municipality |
NGO Voluntary
Religious group Political Group Independent Others
NGO on contract with Government
Chronic Meds Safe Motherhood Child Care Others

Q2: Status of outpatient facility

Not Functioning: since when:.....
Functioning:
Partially functioning:
Damaged by latest hostilities
-Functional units damaged:.....
.....
.....
-Expected date for re-functioning:

Q3: Access

Facility easily accessible by road: YES | NO |
Road condition: Functional | Not Functional |
Estimated time to reach facility by walking (in minutes):.....
Travel time to the nearest referral hospital (in minutes):.....

Q4: Describe the geographic area served by facility [Names of village(s)]

Number of persons that have been displaced and have returned:.....

Q5: Facility damage assessment (due to latest hostilities)

Resource	Does facility have this today?		Is it observed in good working condition?	
	Yes	No	Yes	No
Electricity Central Power plant				
Number of hours/Day available from central Generator power				
Mazout storage				
Fuel storage				
Running Water				
Drinking Water				
Bottled Water				
Linkage to sewerage				
Main sewer system				
Cesspool/Latrine				
Medical waste disposal				
Refrigerator				
Freezer				
Vaccine Carrier (Cold chain)				
Ambulance		How Many?		
Vehicles		How Many?		

Q6: Service provision within the last month?

Antenatal Care	Delivery
Postpartum Care	Emergency obstetric care
Family Planning	Well baby Care
Immunizations	Nutrition advice/Breast feeding advice
Medical conditions	Minor surgical care
Mental health	Care of the older people
Rehydration	Laboratory services
Radiological services	Health education
Environmental health	Others.....

Q7: Human Resources

Category of staff	Numbers	Needed/Missing
General practitioner		
Pediatrician		
Internist		
Obstetrician		
Registered Nurse		

Part One: Hospitals

Governorate (Muhaffazat)

District (Qada')

Town/Locality/Village

Name of the Facility

Address

Telephone

Facsimile

E-Mail

Assessment Team Members

Name and Position of representative(s) from facility providing information

His/Her Cell phone

Date of Assessment

Q1a: Number of operating hospital beds

Total number of operating beds

Medical:..... -Surgical :..... -Pediatric:.....
 Maternity/Gynecology:..... -Newborn Nursery (All kinds):...
 Intensive care (All kinds):.....
 Not differentiated beds:.....

Q1b: Basic Hospital "Vital signs"

Average occupancy (last week)

Average length of stay (last week)

Q1c: Ownership of hospital facility

Public - Ministry of Health (MOH)

Public – Operated by Military

Private – Voluntary - Not For Profit

Religious Group Community Group

Private – For Profit

Physician(s) Owned

Q2: Status of hospital facility

Not Functioning:..... Since :.../.../....

Functioning

Partially functioning

Damaged by latest hostilities

Functional units damaged:.....,

Expected date for re-functioning:.....

Q3: Access

Facility easily accessible by road: YES

NO

Road condition: Functional

Not Functional

Estimated time to reach facility (in minutes):.....

Travel time to the next tertiary level referral hospital (in minutes):.....

Q4: Describe the geographic area served by facility
 [Names of village(s), towns and caza]

Q5: Facility damage assessment (due to latest hostilities)

Resource	Does facility have this today?		Is it observed in good working condition?	
	Yes	No	Yes	No
Electricity Central Power plant				
Number of hours/Day available from central Generator power				
Mazout storage				
Fuel storage				
Running Water				
Drinking Water				
Bottled Water				
Linkage to sewerage				
Main sewer system				
Cesspool/Latrine				
Medical waste disposal				
Refrigerator				
Freezer				
Vaccine Carrier (Cold chain)				
Blood Bank services				
Renal Dialysis Services				
Ambulance		How Many?		
Vehicles		How Many?		
Physical plant services				
Medical Equipment Maintenance:	Available		not available	

Q6: Service provision within the last month? (Number of cases)

Emergency/Urgent	Elective
Trauma cases- Casualties	
Surgical cases	
Medical cases	
Obstetric cases	
Gynecological cases	
Deliveries	
Pediatric cases	
Mental health cases	
Care of the older people	
Kidney Dialysis sessions	
Chemotherapy sessions	
Laboratory services	
Hematology	
Bacteriology	

- Parasitology
- Serology
- Biochemistry
- Hormone assays
- Blood Bank services
- Radiological services
- General Radiology
- CT Scanner
- MRI
- Ultrasound
- Nuclear Medicine
- Anesthesia Services
- Major
- Minor
- Physiotherapy services
- Nutrition/Dietetics
- Others..

Q7: Human Resources

Category of staff	Numbers	Needed/Missing
General practitioner		
Pediatrician		
Internist		
Cardiologist		
Nephrologist (Renal)		
Oncologist (Hematology)		
ICU Intensivist		
Obstetrician		
Ophthalmologist		
ENT Specialist		
Anesthesiologist		
Registered Nurse		
Practical Nurse		
Midwife		
Pharmacist		
Laboratory technician		
Radiographer		
Physiotherapist		
Health educator		
Social Worker		

Q8: Service Statistics

What is the age breakdown of total attendance at this facility last month?

Age bracket	Men	Women
Less than 5 years		
Age 16-44 years		
Age 45-64 years		
Over 65 years		

What is the medical condition breakdown of total attendance at this facility last month?

	Men	Women

Casualties		
Surgical		
General		
Orthopedic		
Neurosurgery		
Urology		
Pediatric		
Newborn		
Obstetric		
Gynecology		
Cardiac		
Pulmonary		
Medical		
General		
Mental		

Q9a: Did your facility receive referrals from other facilities (last month)?

From Health Centers/ Dispensaries?	Where from?	Number
From other hospitals?	Where from?	Number
What are the most common causes for referrals to your facility?		

Q9b: Did your facility refer patients to other hospitals (last month)?

To which hospital?
 Number of referrals
 Condition of referrals
 Reasons for referrals

Q10. Inventory of Medicines and Medical Supplies

Medicine Group	Quantity in stock (Unexpired only) Number Unit (box, dose, piece)	Comments
Anesthetics		
Antibiotics		
Analgesics		
Intravenous solutions		
Plasma derivatives		
Blood derivatives		
Disinfectants		
Oral rehydration solutions		
Anti-Diabetics		
Psychotropic drugs (Mental)		
Cardiac		
Respiratory		
Renal Dialysis filters		
Other groups		
Are the medicines available on a 24 hours/seven days basis?		
Pharmacist on duty?		

Q.11 Did the hospital received any donation through the last month

- Drugs	Supplies
-Milk Formula	others:.....

Q12: Comments for the assessment team:

Name of the team's member:

Signature:

Name of the team's member:

Signature:

Data Delivery date:

Signature:

Annex 2: List of health facilities

Facility Type	Ownership	NGO Voluntary	Telephone	Status of Facility
Dispensary	Not Defined		838084/03	No response
Dispensary	NGO		804564/03	Functioning
Health Centre	MOSA		325245/08-- ex:1284	Functioning
Dispensary	NGO	Religious group	03/127847	Functioning
Dispensary	NGO	Independent	08/325386-- Ex:1114	Functioning
Dispensary	NGO	Independent	514353/03	No response
Dispensary	NGO	Religious group	703193/03	Functioning
Dispensary	MOSA		230238/08	Functioning
Dispensary	Municipality		03/729923	Functioning
Dispensary	MOH		08/379122	Functioning
Dispensary	Municipality			Functioning
Dispensary	MOH		03/674111 08/370309	Partially functioning
Health Centre	MOSA		08/370891 08/370622	Partially functioning
Health Centre	NGO	Religious group	08/373512 08/373513	Functioning
Dispensary	NGO	Religious group	373763/08	Functioning
Dispensary	NGO	Independent	03/599358	Functioning
Dispensary	NGO		615145/03	Functioning
Dispensary	NGO	Independent	370084/08 03/038437	Functioning
Dispensary	MOH and NGO	Religious group	08/300151	Functioning
Dispensary	NGO	Religious group	747976/03	Functioning
Dispensary	MOH		03/597620	Functioning
Dispensary	NGO	Independent	08/305330	Functioning
Dispensary	MOSA		305180/08	Functioning
Dispensary	MOH and NGO	Religious group	08/330024	Functioning
Dispensary	NGO	Independent	330777/08	Functioning
Dispensary	NGO	Independent	380826/03 330777/0	Not Functioning
Dispensary	MOH		330723/08	Functioning
Health Centre	MOH and NGO		08/240234	Functioning
Dispensary	MOSA		08/240544	Functioning
Dispensary	NGO	Religious group	332081/03	Not Functioning
Dispensary	NGO	Others	318362/03	Functioning
Dispensary	NGO	Others	240413/08	Functioning
Dispensary	MOH and Municipality		03/597909	Functioning
Dispensary	MOSA		08/345900	Functioning
Dispensary	MOSA		373739/08	Functioning
Dispensary	Not Defined		373740/08	Not Functioning
Dispensary	NGO		03/573590	Not Functioning
Dispensary	NGO	Independent	345842/03 958690/03	Functioning

Facility Type	Ownership	NGO Voluntary	Telephone	Status of Facility
Dispensary	NGO		372180/03	Not Functioning
Dispensary	MOSA		327248/01	Centre Unvisited
Dispensary	MOSA		01327248	Functioning
Dispensary	NGO	Independent	323345/01	Functioning
Dispensary	NGO		446005/01	Centre Unvisited
Dispensary	NGO		337860/01	Centre Unvisited
Dispensary	NGO		323571/01	Centre Unvisited
Dispensary	NGO		586731/01	Centre Unvisited
Dispensary	NGO		329843/01	
Dispensary	MOH		442110/01	
	NGO		817182/01	No response
	Not Defined			Not Functioning
Health Centre	NGO	Religious group	01\856118	Functioning
Health Centre	MOH		01/737006	Functioning
Dispensary	NGO	Religious group	03828048-01824361	Functioning
	NGO		613645/01	Does not exist
Health Centre	MOSA		03/634315	Functioning
Dispensary	NGO	Religious group	663409/01	Functioning
Health Centre	MOH		01/653760	Functioning
	NGO		01/311902	No response
Dispensary	NGO	Independent	664363/01	Functioning
Dispensary	NGO	Independent	664368/01	Functioning
Health Centre	NGO	Independent	316920-01/310948	Functioning
Dispensary	NGO	Independent	01/633762	Functioning
Health Centre	MOSA		706267/01	Functioning
Health Centre	NGO	Others	448175/01	Functioning
Dispensary	NGO	Independent	703904/01	Functioning
	NGO		749447/01-855596/01	No response
	NGO	Independent	302370/01	No response
Dispensary	NGO	Independent	640813/01	Functioning
Health Centre	NGO	Religious group	597313/03-01663631	Not Functioning
	NGO		752766/01	No response
Dispensary	NGO	Independent	01/310948	Functioning
Health Centre	NGO	Independent	01 856118	Functioning
Dispensary	NGO	Independent	551317/01	Functioning
Dispensary	MOH		01442110-01/830000	Partially functioning
Health Centre	NGO	Religious group	586880/01	Functioning
Health Centre	NGO	Independent		Functioning
Health Centre	NGO	Independent	351528/01	Functioning
	NGO		855716/01	No response
Dispensary	MOH		03239650	Centre Unvisited
Dispensary	NGO	Independent	701944/01	Functioning
Dispensary	NGO		01/656605	Functioning
Dispensary	Not Defined		01615300	Centre Unvisited
Dispensary	NGO		01333305	Centre Unvisited
Dispensary	NGO		653888/03	Centre Unvisited
Health Centre	NGO		03/763867	No response
Hospital	NGO	Religious group	856658/01	Functioning

Facility Type	Ownership	NGO Voluntary	Telephone	Status of Facility
outpatient department/ER				
Dispensary	NGO		01327414	
Dispensary	NGO	Religious group	01335844	Functioning
Health Centre	NGO	Independent	754300/01-01/350000	Functioning
Dispensary	MOSA			Functioning
Dispensary	NGO	Independent	437429/05	Functioning
Dispensary	MOH		03/440669	Functioning
Dispensary	MOSA		452194/05	Functioning
Dispensary	NGO		536094/03	Functioning
Health Centre	Municipality		248244/03	No response
Health Centre	MOSA		387022/03	Functioning
Dispensary	NGO	Independent	558203/01	Functioning
Dispensary	MOSA		409512/03	Functioning
Health Centre	NGO		796091/03	No response
Dispensary	MOSA		833522/01	Not Functioning
Dispensary	NGO	Others	542835/01	Functioning
	NGO		840967/01	No response
Health Centre	NGO	Religious group	01/840967	Functioning
Health Centre	MOSA		480334/05	Partially functioning
Dispensary	NGO	Independent	336150/03	Functioning
Dispensary	NGO	Independent	357889/03	Functioning
Dispensary	MOSA		832183/03	Functioning
	NGO		597313/03	Does not exist
Health Centre	NGO	Others	472110/01	Partially functioning
Health Centre	NGO	Independent	382458/03	Functioning
Health Centre	NGO	Religious group	273390/01	Functioning
Dispensary	Not Defined		719489/03	Not Functioning
Dispensary	NGO	Independent	834039/01	Functioning
Health Centre	MOSA	Independent	450724/01	Functioning
Dispensary	NGO		915647/03	Not Functioning
Dispensary	NGO		473367/01	Not Functioning
Health Centre	NGO	Independent	364934/03-01/451685	Functioning
Health Centre	NGO	Independent	03/720574	Functioning
Dispensary	NGO	Religious group	856922/03-01/454644	Functioning
Dispensary	NGO	Religious group	210466/03	Functioning
Dispensary	NGO		833848/01	Not Functioning
Dispensary	Not Defined		821290/01	Not Functioning
Dispensary	Municipality		472934/01-933-935	Functioning
Health Centre	Municipality		05\431386	Unreachable
Health Centre	Municipality		01\544889	Not Functioning
Health Centre	MOH		03-978942	Partially functioning
Health Centre	NGO		557281/01	Not Functioning
Health Centre	Municipality		276181/01	Not Functioning
Health Centre	NGO		273390/01	Not Functioning
Dispensary	NGO			Not Functioning
	NGO		504510/03	Does not exist
Dispensary	MOSA	Others	668131/03	Functioning
Health Centre	NGO	Religious group	405149/07	Partially functioning

Facility Type	Ownership	NGO Voluntary	Telephone	Status of Facility
Health Centre	NGO	Independent		Not Functioning
Dispensary	MOH		848312/03	Not Functioning
Health Centre	MOSA		03/277167-07/450571	Not Functioning
Dispensary	MOSA		371124/03	Unreachable
Hospital outpatient department/ER	MOH		325456/07	Not Functioning
Dispensary	MOSA	Religious group	370080/07	Partially functioning
Dispensary	MOSA		668131/03	Functioning
Health Centre	NGO	Religious group	759257/03	Not Functioning
Dispensary	MOSA		458695/03	Not Functioning
Dispensary	NGO	Religious group	405149/07	Not Functioning
Dispensary	MOH	Independent	03/504935	Partially functioning
Dispensary	NGO		914762/03	Not Functioning
Dispensary	MOSA			Unreachable
Dispensary	MOSA		371124/03	Not Functioning
Dispensary	NGO	Independent	03/535995 07/470140	Functioning
Dispensary	NGO	Religious group	03 398735	Functioning
Dispensary	MOSA		03/668131	Not Functioning
Dispensary	NGO	Religious group	370277/07	Functioning
Dispensary	NGO	Independent	370271/07	Partially functioning
Dispensary	MOSA		371124/03	Not Functioning
Dispensary	Not Defined		277167/03	Not Functioning
Health Centre	NGO		209827/03	Not Functioning
Dispensary	NGO		295202/03	Not Functioning
Dispensary	Not Defined		385387/07	Not Functioning
Health Centre	MOSA		03296377	Not Functioning
Dispensary	NGO	Religious group	03/083577	Not Functioning
Health Centre	MOSA		03/285018	Not Functioning
Health Centre	Not Defined		346656/07	Not Functioning
Dispensary	MOH		03578356	Functioning
Dispensary	NGO	Independent	07/555850-07/555671	Functioning
Dispensary	NGO		264374/03	Not Functioning
Dispensary	NGO		262173/03	Does not exist
Health Centre	MOSA		999011/03	Functioning
Dispensary	NGO		264374/03	Functioning
Health Centre	NGO	Independent	03741884	Functioning
Dispensary	NGO	Independent	208967/03	Not Functioning
Dispensary	Municipality		07/551224	Functioning
Health Centre	MOSA		07/565120 03/971199	Functioning
Health Centre	NGO	Independent	07/565140	Functioning
Dispensary	Municipality	Political Group	03/447965 03/904028	Functioning
Dispensary	MOH	Political Group	03/136152	Functioning
Dispensary	MOH	Religious group	07/560116	Functioning
Health Centre	MOSA		971199/03	Functioning
Dispensary	Not Defined			Not Functioning
Dispensary	NGO		352949/03	Not Functioning
Health Centre	NGO	Independent	621441/03	Not Functioning

Facility Type	Ownership	NGO Voluntary	Telephone	Status of Facility
Dispensary	NGO	Independent	578356/03	Functioning
Dispensary	NGO	Religious group	200587/08	Functioning
Dispensary	MOSA		200464/08	Functioning
Health Centre	NGO	Independent	08/200089	Functioning
Dispensary	NGO	Religious group	08/20	No response
Dispensary	NGO		07/762985	No response
Dispensary	NGO	Independent	07/781201	Functioning
Dispensary	NGO	Independent	03/810191	Functioning
Dispensary	MOSA	Independent	07/781025	Functioning
Dispensary	NGO	Independent	07/781201	Functioning
Dispensary	MOH		03/810191	Functioning
Dispensary	NGO	Independent	03/628315	Not Functioning
Dispensary	MOSA		07/740001	No response
Hospital outpatient department/ER	MOH	Independent	07/780106	Functioning
Health Centre	NGO	Religious group	03/628315	Functioning
Dispensary	NGO	Independent	03/628315	Not Functioning
Dispensary	Municipality	Independent	03/444762	Functioning
Dispensary	NGO	Independent	03/628315	Functioning
Dispensary	NGO	Independent	07/781700	Functioning
Dispensary	MOSA	Independent	03/810191	Functioning
Dispensary	NGO			No response
Dispensary	MOSA		881496/03	Functioning
Dispensary	MOSA		296343/03	Not Functioning
Dispensary	NGO	Independent	552602/03	Functioning
Health Centre	MOH		/	Not Functioning
Dispensary	NGO			Does not exist
Health Centre	MOSA		03/932348	Not Functioning
Dispensary	NGO		361964/03	Does not exist
Dispensary	NGO	Religious group	434703/03	Functioning
Dispensary	NGO	Political Group	724450/03	Partially functioning
Dispensary	MOSA		548974/03	Does not exist
Health Centre	MOSA		03/086542	Not Functioning
Dispensary	NGO		01/372802	Unreachable
Dispensary	NGO		762351/03	No response
Dispensary	NGO	Political Group	03/434489	Not Functioning
Health Centre	MOH		03/344727	Not Functioning
Dispensary	NGO		384600/03	Not Functioning
Dispensary	NGO			Does not exist
Health Centre	MOSA		296343/03	Not Functioning
Health Centre	Not Defined			Does not exist
Dispensary	MOH		822240/03	Not Functioning
Health Centre	NGO	Religious group	03/203709	Not Functioning
Health Centre	MOSA		830428/03	Not Functioning
Health Centre	MOSA		668131/03	Not Functioning
Hospital outpatient department/ER	MOH		07/83066-7	Not Functioning
Health Centre	MOSA		07/860080	Not Functioning
Dispensary	MOSA		548974/03	Not Functioning
Dispensary	NGO	Independent	03/428358	Not Functioning
Health Centre	NGO	Independent	430289/03	Functioning

Facility Type	Ownership	NGO Voluntary	Telephone	Status of Facility
Dispensary	NGO		717581/03	Not Functioning
Health Centre	NGO	Religious group	825572/03	Partially functioning
Dispensary	MOSA		760015/07	Functioning
Health Centre	NGO	Independent	07/768687	Functioning
Dispensary	NGO		07764393	No response
Dispensary	MOH		07760014	No response
Health Centre	MOH		07\760014	No response
Dispensary	NGO		767951/07	No response
Dispensary	NGO	Others	762985/07	Functioning
Dispensary	NGO	Independent	07/767795	Functioning
Dispensary	NGO			Not Functioning
Dispensary	NGO		587702/03	No response
Dispensary	NGO		760151/07	No response
Dispensary	NGO		761911/03	Unreachable
Health Centre	MOSA			Not Functioning
Health Centre	MOSA		871402/03 07/500014	Functioning
Dispensary	NGO		500980/07	Not Functioning
Health Centre	NGO	Independent	03430289	Functioning
Health Centre	MOSA		825572/03	Functioning
Health Centre	MOH		07/210361	Not Functioning
Health Centre	MOSA	Religious group	07/210456	Functioning
Health Centre	NGO	Religious group	210251/07	Functioning
Health Centre	MOSA		696072/03- 03/790615	Functioning
Health Centre	NGO	Religious group	821829/03	Functioning
Health Centre	MOSA		215221/07	Functioning
Health Centre	NGO	Religious group	633976/03	Not Functioning
Health Centre	NGO	Religious group	530208/07	Functioning
Health Centre	NGO	Political Group	07525636	Functioning
Health Centre	NGO		246355/03	Not Functioning
Health Centre	NGO	Religious group	07/520515	Functioning
Dispensary	NGO		472036/03	Not Functioning
Health Centre	NGO	Independent	07/505344	Functioning
Dispensary	NGO		587702/03	Unreachable
Health Centre	MOSA			Functioning
Health Centre	Municipality		07/540323	Functioning
Dispensary	NGO	Religious group	07/831995 07/511551	Functioning
Health Centre	MOSA	Independent	696072/03- 07/540463	Functioning
Health Centre	Municipality		07/535066	Functioning
Health Centre	NGO	Religious group	726320/03	Functioning
Health Centre	MOSA		215221/07	Functioning
Health Centre	Municipality		03/625554	Functioning
Dispensary	MOSA		767660/07	No response
Health Centre	NGO	Others	03/631956	Functioning
Dispensary	NGO	Independent	761985/07	Functioning
Health Centre	MOSA		696072/03- 07/540532	Functioning
Health Centre	NGO	Independent	767653/07	Functioning
Dispensary	MOH		760014/07	Not Functioning
Dispensary	NGO	Religious group	525237/07	Not Functioning

Facility Type	Ownership	NGO Voluntary	Telephone	Status of Facility
Dispensary	MOSA		334364/03	Functioning
Health Centre	NGO		734938/07	Not Functioning
Dispensary	Not Defined		07/305610	
Dispensary	NGO	Independent	03/378647	Functioning
Dispensary	MOSA	Others	03/251265	Functioning
Dispensary	NGO		725104/07	Functioning
Health Centre	Not Defined	Independent	07/420606	Functioning
Health Centre	MOSA		07/442070	Functioning
Dispensary	Municipality	Independent	313802/03	Not Functioning
Dispensary	NGO		220140/07	No response
Dispensary	MOSA		07223600	Functioning
	MOSA		07/751398	
Dispensary	NGO	Independent	03/627015	Functioning
Dispensary	NGO	Independent	03/522937	Partially functioning
Dispensary	MOSA		260259	Functioning
Dispensary	MOSA		525237/07	Functioning
	MOSA		03/724881	No response
Dispensary	NGO	Political Group	03209582	Not Functioning
	NGO		420456/03	
Dispensary	MOSA		751398/07	Functioning
Dispensary	Municipality		200674/07	Functioning
Dispensary	NGO		07\728857	Not Functioning
Dispensary	NGO	Independent	750240/07	Functioning
Dispensary	NGO	Independent	07/723822	Functioning
Dispensary	MOSA		721608/07	Functioning
Dispensary	NGO	Independent	841739/03	Functioning
Dispensary	NGO	Independent	638025/03	Not Functioning
Dispensary	MOH	Independent	07/751077	Not Functioning
Health Centre	NGO	Independent	751077/07	Functioning
Dispensary	NGO	Independent	918926/03	Functioning
Dispensary	NGO	Independent	735699/07	Functioning
Dispensary	NGO	Independent	737277/07	Functioning
Dispensary	NGO	Independent	07/722267	Functioning
Health Centre	NGO	Independent	732253/07	Functioning
Hospital outpatient department/ER	MOH		07/721606	Functioning
Dispensary	Not Defined		735822/07	Not Functioning
Dispensary	NGO	Independent	750638/03	Functioning
Dispensary	NGO	Independent	753502/07	Functioning
Dispensary	NGO	Religious group	728857/07	Functioning
Health Centre	NGO		625800/07	Functioning
	NGO		200434/07	
Dispensary	NGO	Independent	725254/07	Functioning
Dispensary	NGO	Independent	722393/07	Functioning
Dispensary	NGO	Independent	752953/07	Functioning
Dispensary	NGO	Independent	725158/07	Functioning
	NGO	Independent	07722555	Functioning
Dispensary	NGO		260780/07	Does not exist
Health Centre	NGO	Independent	70/164678	Functioning
Dispensary	Municipality		07/393000	Functioning
Dispensary	NGO		03/217689	Not Functioning
Dispensary	NGO	Religious group	741190/07	No response

Facility Type	Ownership	NGO Voluntary	Telephone	Status of Facility
Dispensary	MOSA		729511/07	Functioning
Health Centre	NGO	Independent	215660/07	Functioning
Health Centre	MOSA		215221/07	Functioning
Dispensary	MOSA		334364/03	Functioning
Dispensary	NGO		200434	Not Functioning
Health Centre	Municipality		740070/07	Not Functioning
Health Centre	MOH		03/532201	Functioning
Dispensary	MOSA		03/747768	Functioning
Dispensary	MOH		07/415234	Functioning
Dispensary	MOSA		07/410723	Functioning
Health Centre	MOH	Religious group	410407/07	Functioning
Health Centre	MOSA		07343178	Functioning
Dispensary	MOSA		07/460463	Not Functioning
Dispensary	NGO		03/879026	No response
Dispensary	MOSA	Religious group	243842/03	Not Functioning
Dispensary	NGO	Religious group	03639828	Not Functioning
Dispensary	MOSA		07345282	Functioning
Dispensary	NGO		03/285018	No response
Health Centre	NGO	Religious group	07/741190	Functioning
Dispensary	NGO	Religious group	751431/03	Functioning
Health Centre	NGO	Independent	03864390	Functioning
Dispensary	NGO		07/400403	Unreachable
Dispensary	MOSA		07/410723	Functioning
Dispensary	MOSA	Religious group	03/277413	Functioning
Dispensary	Municipality		03/663795	Not Functioning
Dispensary	NGO	Religious group	07/345189	Functioning
Dispensary	MOSA		07/741009	Functioning
Dispensary	MOSA		345281/07	Not Functioning
Health Centre	MOSA		345281/07	Functioning
Dispensary	NGO	Independent	740070/07	Functioning
Dispensary	NGO	Independent	348221/07	Partially functioning
Dispensary	MOH		07/740297	Partially functioning
Dispensary	NGO	Independent	07343108	Functioning
Health Centre	Municipality	Independent	345901/07	Functioning
Dispensary	NGO	Religious group	825572/03	Not Functioning
Health Centre	MOH		07/740293	Functioning
Dispensary	NGO	Independent	741190/07	Partially functioning
Health Centre	NGO	Religious group	07/430436	Functioning
Dispensary	NGO	Religious group		Functioning
Dispensary	MOH	Political Group	347811/07	Functioning
Dispensary	NGO		740601/07	Unreachable
Dispensary	NGO	Independent	344620/07	Functioning
Dispensary	NGO	Independent	453117/03	Not Functioning
Dispensary	NGO	Independent	03/771840	Partially functioning
Dispensary	NGO	Religious group	03/341415	Not Functioning
Dispensary	NGO	Religious group	07/380745	Unreachable
Dispensary	NGO		740070/07	Not Functioning
Dispensary	Municipality	Political Group	825572/03	Functioning
Dispensary	MOSA	Independent	03/880337- 07/415088	Functioning
Health Centre	NGO	Religious group	294185/03	Functioning
Health Centre	MOSA		07/430423	Not Functioning
Dispensary	Municipality		822542/03	Functioning

Facility Type	Ownership	NGO Voluntary	Telephone	Status of Facility
Dispensary	MOH		07430537	Not Functioning
Dispensary	NGO	Religious group		Not Functioning
Dispensary	NGO		07/325588	Unreachable
Dispensary	MOSA		07/345282	Not Functioning
Health Centre	Municipality	Political Group	678644/03-	Functioning
Dispensary	NGO		03/500451	Unreachable

Annex 3: List of hospitals

Qada	Village	Hospital	Type	NGO	Status
Baalbeck	بعليك	Ahli hospital			Not Functioning
Baalbeck	بعليك	AL Rayan			Hospital Unvisited
Baalbeck	بعليك	Al Tatar Hospital	Private For Profit		Functioning
Baalbeck	بعليك	Dar El Amal	Private For Profit		Functioning
Baalbeck	بعليك	Dar El Hayat Hospital	Private For Profit		Partially functioning
Baalbeck	بعليك	Dar EL Hikmeh Hospital	Vol Non Profit	Religious group	Partially functioning
Baalbeck	بعليك	Farhat Beit Chama	Private For Profit		Functioning
Baalbeck	بعليك	Hopital Gouv de Baalbeck	MOH		Not Functioning
Baalbeck	بعليك	Ibn Sinna	Private For Profit		Functioning
Baalbak	بعليك	Mortada	Private For Profit		Functioning
Baalbak	بعليك	Universal Hospital			Hospital Unvisited
Beirut	الاشرفيه_بيروت	Hopital Elie Karam			Not Functioning
Beirut	الاشرفيه_بيروت	Hopital Saïid			Not Functioning
Beirut	الاشرفيه_بيروت	Hotel Dieu de France	Vol Non Profit	Others	Functioning
Beirut	الاشرفيه_بيروت	Rizk Hospital	Private For Profit		Partially functioning
Beirut	الاشرفيه_بيروت	St Georges roum Hopital	Vol Non Profit	Religious group	Functioning
Beirut	الرميل_بيروت	Geutcherian			Not Functioning
Beirut	بيروت	AL Ateba			Not Functioning
Beirut	بيروت	Al Nicaai	Private For Profit	Physician Owned	Partially functioning
Beirut	بيروت	American University Hospital	Vol Non Profit	Others	Functioning
Beirut	بيروت	Beirut Hospital	Not Defined		No Response
Beirut	بيروت	Dar El Ajjaza El Islamya	Vol Non Profit	Religious group	Functioning
Beirut	بيروت	Dr Samy Baydoun Hospital	Vol Non Profit	Others	Functioning
Beirut	بيروت	Fouad Khalife			Not Functioning
Beirut	بيروت	Fouad Khoury Hospital			No Response
Beirut	بيروت	Gaitawi Lebanese Hospital			Hospital Unvisited
Beirut	بيروت	Ghorayeb Hospital	Private For Profit	Physician Owned	Functioning
Beirut	بيروت	Haddad hospital for the Rosary sisters			Hospital Unvisited
Beirut	بيروت	Haidar Hospital			No Response
Beirut	بيروت	Hopital George Bikhaazi	Vol Non Profit	Community group	Functioning

Qada	Village	Hospital	Type	NGO	Status
Beirut	بيروت	Hopital Gouv de Quarantina - Existant	MOH		Partially functioning
Beirut	بيروت	Iskandar Khoury			Not Functioning
Beirut	بيروت	Khalidi Hospital			Not Functioning
Beirut	بيروت	Makassed General Hospital	Vol Non Profit	Religious group	Functioning
Beirut	بيروت	Middle-East Hospital	Not Defined		Not Functioning
Beirut	بيروت	Mohamad Khaled	Vol Non Profit	Religious group	Not Functioning
Beirut	بيروت	Mother and Child	Military		Functioning
Beirut	بيروت	Najjar Hospital	Private For Profit		Functioning
Beirut	بيروت	Rassoul El Aazzam			Functioning
Beirut	بيروت	Trad Hospital	Private For Profit		
Beirut Suburbs	الحدث-بعيدا	St georges hadeth	Not Defined	Religious group	No Response
Beirut Suburbs	الحدث-بعيدا	Ste Therese	Not Defined	Religious group	Functioning
Beirut Suburbs	الغبيره	Al Sahel	Vol Non Profit		Functioning
Beirut Suburbs	برج البراجنة	Al Bourj Hospital	Private For Profit	Physician Owned	Partially functioning
Beirut Suburbs	بعيدا	Al Zahraa	Private For Profit	Religious group	Functioning
Beirut Suburbs	بعيدا	Kamal Jounblat	Private For Profit	Physician Owned	Partially functioning
Beirut Suburbs	حارة حريك	Bahman Hospital	Vol Non Profit	Community group	Not Functioning
Beirut Suburbs	عين الرمانة-بعيدا	Al Hayat			No Response
Bin Jbeil	بنت جبيل	Bint Jbeil Gov Hospital			Not Functioning
Bin Jbeil	بنت جبيل	Islamic Health Society	Private For Profit	Religious group	Partially functioning
Bin Jbeil	تبنين	Tibnin Governmental	MOH		Partially functioning
Hasbaya	حاصبيا	Hasbaya Hospital	MOH		Functioning
Hermel	الهرمل	AL Assi Hospital	Private For Profit		Functioning
Hermel	الهرمل	Al Batoul Hospital	Vol Non Profit	Religious group	Functioning
Hermel	الهرمل	Hermel Old Gov Hospital	MOH		Functioning
Hermel	الهرمل	Hopital Gouv de Hermel - Existant			Not Functioning
Jezzin	جزين	Jezzin Gov Hospital	MOH		Functioning
Marjaayun	مرجعيون	Marjaayoun Hospital	MOH		Not Functioning
Marjaayun	ميس الجبل	Mays eljabal Gov Hospital			Not Functioning

Qada	Village	Hospital	Type	NGO	Status
Nabatieh	النبطية	Gandour hospital	Private For Profit	Physician Owned	Functioning
Nabatieh	النبطية	Nabatieh governmental hospital	MOH	Political Group	Functioning
Nabatieh	النبطية	Najdeh Hospital	Vol Non Profit	Community group	Functioning
Nabatieh	النبطية	Nakib Hospital			Not Functioning
Nabatieh	النبطية	Ragheb Harb Hospital	Private For Profit		No Response
Saida	الصرfund	Alaedine Hospital	Private For Profit	Physician Owned	Functioning
Saida	الصرfund	Kharroubi Hospital	Military	Physician Owned	Functioning
Saida	الهلالية صيدا	Jbeily Hospital	Private For Profit		Functioning
Saida	صيدا	Al Chab			Not Functioning
Saida	صيدا	AL Charek			Not Functioning
Saida	صيدا	Al Hajj Iskandar			Not Functioning
Saida	صيدا	Al Jounoub Hospital	Private For Profit	Physician Owned	Functioning
Saida	صيدا	Al Raii Medical Center	Private For Profit	Physician Owned	Functioning
Saida	صيدا	Dalaa hospital	Private For Profit	Physician Owned	Functioning
Saida	صيدا	Elia Hospital			Not Functioning
Saida	صيدا	Hammoud hospital	Private For Profit		Functioning
Saida	صيدا	Hopital Gouv de Saida - Existant			
Saida	صيدا	Kassab Hospital	Private For Profit	Physician Owned	Functioning
Saida	صيدا	Labib medical center	Private For Profit		Functioning
Saida	صيدا	Professeur Bachir Cham			No Response
Sour	صور	Bachour Hospital	Military	Physician Owned	Functioning
Sour	صور	Elissa Hospital			Not Functioning
Sour	صور	Hiram Hospital	Military	Physician Owned	Functioning
Sour	صور	Hopital Gouv de Tyr	MOH		Functioning
Sour	صور	Jabal Amel Hospital	Military	Community group	Functioning
Sour	صور	Nejm Hospital	Military	Physician Owned	Functioning

Annex 4: Saida

As Saida data came in too late to be included in the overall analysis of the assessment, the data are mentioned separately.

Main Characteristics of Outpatients Facilities Assessed

	N (%)
Functioning Status	
Functioning	10 (19%)
Partially functioning	38 (72%)
Not Functioning	1 (2%)
No Information*	4 (7%)
Ownership	
Ministry of Health	2 (3%)
Ministry of Social Affairs	13 (23%)
Municipality	3 (5%)
Non Governmental Organization	36 (63%)
Others	3 (5%)
Facility Type	
Dispensary	42 (81%)
Health center	9 (17%)
Hospital outpatient /ER	1 (2%)
Road Accessibility	
Yes	13 (23%)
No	44 (77%)

Resources Availability at Assessed Outpatients Facilities

	F	P	N
	(n=38)	(n=1)	(n=10)
Transportation			
Ambulance	12 (32%)	0	1 (10%)
Vehicle	4 (11%)	0	0
Power resources			
Central power	36 (95%)	1 (100%)	2 (20%)
Generator	35 (92%)	1 (100%)	1 (10%)
Mazout storage	17 (45%)	0	0
Fuel storage	13 (34%)	1 (100%)	0
Water			
Running water	38 (100%)	0	2 (20%)
Drinking water	33 (87%)	1 (100%)	1 (10%)
Sewerage	35 (92%)	1 (100%)	2 (20%)

F: Functioning facilities
P: Partial functioning
N: Not functioning

Services provided during war in health centers in Saida

	N (%)
Maternal Services	
No	28 (49%)
Yes	29 (51%)
Pediatric services	
No	20 (35%)
Yes	37 (65%)
General consultation services	
No	23 (40%)
Yes	34 (60%)
Educational services	
No	27 (47%)
Yes	30 (53%)
Diagnostic services	
No	38 (67%)
Yes	19 (33%)

Distribution of human resources in outpatient facilities in Saida

	N (%)
Dentist	
No	56 (98%)
Yes	1 (2%)
ENT	
No	
Yes	3 (100%)
Eyes	
No	
Yes	
General Practitioner	
No	21 (37%)
Yes	36 (63%)
Health Educator	
No	50 (88%)
Yes	7 (12%)
Internist	
No	36 (63%)
Yes	21 (37%)
Laboratory technician	
No	47 (82%)
Yes	10 (18%)
Midwife	
No	5 (91%)
Yes	5 (9%)
Obstetrician	
Yes	20 (35%)
No	37 (65%)
Pediatrician	
No	18 (32%)
Yes	39 (68%)
Pharmacist	
No	41 (72%)

	N (%)
Yes	16 (28%)
Physiotherapist	
No	53 (93%)
Yes	4 (7%)
Practical Nurse	
No	32 (56%)
Yes	25 (44%)
Radiographer	
No	51 (90%)
Yes	6 (10%)
Registered Nurse	
No	30 (53%)
Yes	27 (47%)
Skin	
No	
Yes	4 (100%)
Social worker	
No	50 (88%)
Yes	7 (12%)
Surgeon	
No	55 (96%)
Yes	2 (4%)

Annex 5: Volunteers

Volunteer name	team	Number of tasks	Km	Km
أحمد النقيب	5	1	150	
أيمن مكي	3	1	230	
إيهاب حمادة	1	1	230	
بارعة خليل	11	1	50	
باسل العود	4	1	200	
بلال شعيتو	3	1	230	
تمارا يونس	30	1	210	
حسام ياسين	13	1	240	
حسن ديب	30	1	210	
خالد هوارى	12	1	230	
دانا صلاحى	12	1	230	
دانيا بساط	12	1	230	
رشا أبو الحسن	6	1	60	
رشيد حمدان	14	1	200	
رمزي حيدر	13	1	240	
رمزية الفرّج	9	1	180	
رنا بشير	20	1	50	
ريان سقلاوي	27	2	100	200
ريما الحاج	17	1	50	
سامر فاعور	35	1	80	
سليم بهذات مرعي	18	1	80	
شانتال حداد	6	1	60	
طارق حجار	5	1	150	
عصام حمزة	35	1	80	
علي حيدر	1	1	280	
علي شعيب	2	1	230	
علي فاروق	4	1	200	
غنى النونو	11	1	50	
فكتور شديد	16	1	220	
كاتي غنطوس	14	1	200	
محمد عمّار الحجار	7	2	200	240
محمود جمال	8	1	190	
مصطفى إبراهيم	8	1	190	
ميرا زخريا	10	1	200	
ميسم علم الدين	16	1	220	
ميسم نمر	37	1	80	
نادية صيموعة	29	1	160	
هبه سعد الحجّار	18	1	80	
هبه طراد	10	1	200	
هنادي شعيان	20	1	50	
وسام بعلبكي	7	2	200	240
وسام ياسين	27	2	100	200
وسن إبراهيم	9	1	180	

Volunteer name	team	Number of tasks	Km	Km
وليد الحاج	17	1	50	
يوسف عبيد	2	1	230	