

ICD Main Condition

A proposed definition for ICD11

Morbidity Reference Group

D051p

Abstract The Morbidity and Mortality Reference Groups are reviewing the definition of the ICD Main Condition for ICD11 as part of their work programs. A proposed definition has been agreed in principle, subject to further work being undertaken to clarify the decision points in the proposed flow chart.

Introduction

In the international context, defining which diagnosis or condition is sequenced first is of great importance to ensure comparable data. If different principles for choosing the main condition are used in different countries, comparing data will be difficult, and few conclusions, other than that different principles apply, can be drawn.

The WHO's Family of International Classifications Network (WHO-FIC) has charged its Morbidity Reference Group (MbRG) and the Mortality Reference Group (MRG) with reviewing the definition of main condition for ICD-11.

This poster summarises the outcome of the Morbidity Reference Group's discussions about a main condition definition to serve the morbidity use case.

The most commonly used definitions are:

The current ICD-10 definition, commonly referred to as the '**resource**' definition:

'The main condition is defined as the condition, diagnosed at the end of the episode of health care, primarily responsible for the patient's need for treatment or investigation. If there is more than one such condition, the one held most responsible for the greatest use of resources should be selected.'

And the definition commonly referred to as the '**reason for admission**' definition which is worded slightly differently by its various users, but they all have the intent of this Australian example from ICD-10-AM:

'The diagnosis established after study to be chiefly responsible for occasioning an episode of admitted patient care.....'

Methods & Materials

The summary differences between the two definitions is that the *resource* definition requires a decision about which condition requires the most resources to treat, and the *reason for admission* definition requires a decision about which condition is the main reason for admission. Importantly, these are very often the same condition.

This work arose from an initial brief to review the ICD-10 main condition definition. Those discussions attempted to reword the current definition in such a way as to improve understanding and therefore application, rather than change the meaning. Because of these challenges the definition remains unchanged.

The definition in ICD-10 and definitions used in various country-specific modifications of ICD-10 were reviewed. Dr Gunnar Henriksson took the lead for the MbRG and proposed a new definition, which takes into account the aims of the two most favoured definitions – the 'resource' definition and the 'reason for admission' definition. The definition distinguishes those instances where a condition arises during the admission that consumes more resources than the reason for admission. These are often the cases that form the argument for adopting the 'resource' definition. Therefore, the left-hand side of the flow chart allows for cases where there is clearly a condition arising in the admission that consumes more resources than the reason for admission and importantly is not related to the reason for admission.

The right-hand side of the flow chart also shows the additional logic for those instances where there is more than one reason for admission with no 'resource condition'. In those instances it is proposed that the reason for admission that consumed the most resources should be selected as the main condition.

Results

The MbRG agreed in principle to the definition (below), subject to further work to adequately define the decision points. The most important of these decision points is the definition of 'complication'.

Prior to the March 09 meeting of MbRG, the committee members independently coded 52 scenarios applying the proposed definition. 22 were in agreement. Refinement of the decision points should improve on that result.

Assign the reason for admission, after study, as the main condition except:

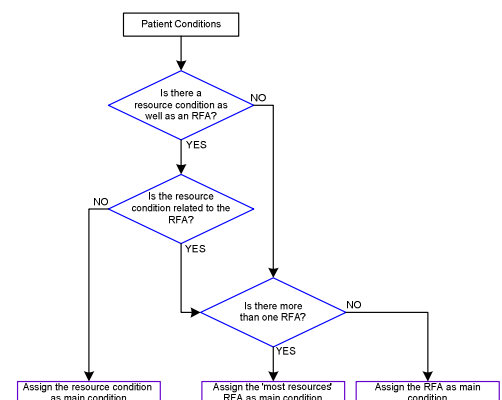
when a condition arises during the admission which:

(a) is NOT related to the reason for admission

AND

(b) consumes more resources than the reason for admission

Proposed main condition flowchart



RFA = Reason for Admission
Resource condition = a condition that consumes more resources than the RFA

Conclusions

The MbRG and MRG will continue working on this proposed definition during the October 09 WHO-FIC meeting.