

# Using of the ICF in surveys in Latin-American

10 – 16 October 2009  
Seoul, Republic of Korea

Soliz P<sup>1</sup>, Buchalla C<sup>2</sup>, Vasquez A<sup>3</sup>

D011p

<sup>1</sup>Mexican Collaborating Centre, <sup>2</sup> Collaborating Centre for the WHO-FIC in Portuguese, <sup>3</sup> Pan American Health Organization

**Abstract** For many years, national population censuses and household surveys have included questions about disability in their intervention schedules causing a problem in disability statistics comparability. How is ICF addressing the problem?: 1) define disability as a multidimensional & universal experience 2) proves useful in improving cross-population comparability by providing a common framework 3) proves a inclusive focus & comprehensive domain coverage and 3) choices for threshold can be explicitly stated and 4) measurement can be tailored to suit the purpose. We present some experiences about using of the ICF in surveys.

## Introduction

Each country use different measuring instrument with variations in the questions and in the obtained data, causing a problem in disability statistics comparability

**The ICF is accepted as the international standard for describing and measuring health and disability**

After the launching the ICF, some Latin American countries began activities to accomplish the resolution WHW 54.21. Some developed from population surveys

The main objectives of the surveys were

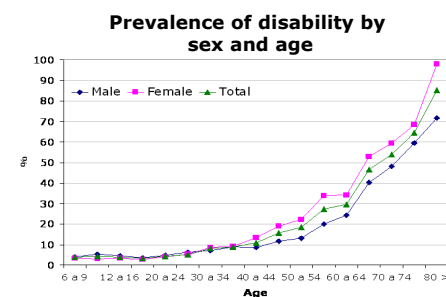
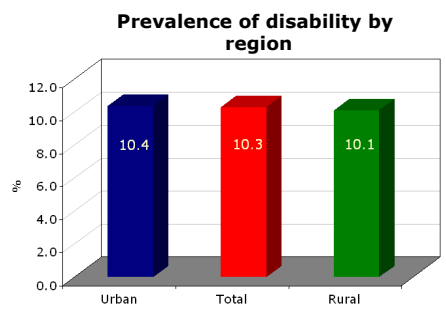
- 1.To determine the prevalence of disability
- 2.To characterize the people with disabilities
- 2.To provide evidence for planning, evaluation and resource allocation

## Nicaraguan National Survey of Disability ENDIS 2003

National & sub-national representative sample

Disability prevalence was measured using Tools based WHO-DAS II

Disability prevalence was higher than previous estimations other estimations focused on deficiencies

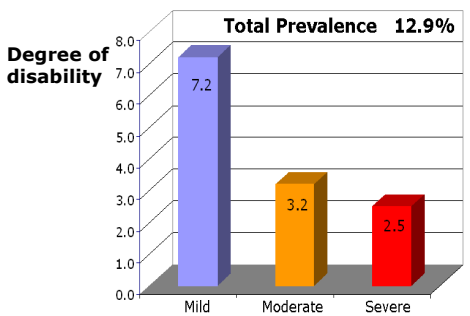


## Methods & Materials

### First National Study on Disability (Chile) ENDISC-CIF 2004

National & subnational representative sample (n= 13.350 household)

**Main findings:** A disability index was also elaborated in order to distinguish different magnitudes of individual disability (mild, moderate, severe). The results have allowed to assess Chilean disability and they have been useful for policy making and resource allocation.



The range of prevalence of disability by region was 6.9% in the region XII and 17.8% in the region XII.

In the metropolitan area value was 11.6% in rural areas 15.5% and 12.5% urban

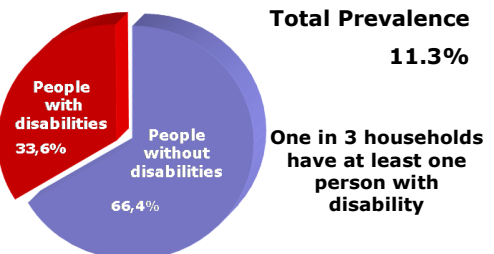
### First National Survey of Disability (Panamá) PENDIS 2006

National & subnational disability prevalence were estimated.

A questionnaire based on WHO-DAS II was applied to the sample.

Panamanian Research team was coached by the Chilean team who worked on ENDISC-CIF 2004.

An National Atlas of Disability was created with the results of this study



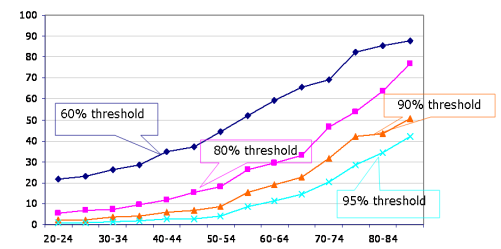
## Results

### Performance Assessment National Survey (Mexico) ENED 2003

National & subnational representative sample (n= 39.000 household)

**Main findings:** Using the WHO-DAS II qualification algorithm, prevalence of disability was estimated for national & subnational levels.

Besides, the results were used as inputs to estimate Healthy Life Expectancy (HALE) at national & subnational levels.



Four lines are displayed, representing age-distributed prevalence rates based on four severity threshold decisions: 60 percent, 80 percent, 90 percent, and 95 percent.

## Conclusions

- The results have allowed to demonstrate the convenience of ICF implementation at population level.
- Evidences of usefulness of ICF & WHODAS 2.0 were obtained
- The measurement is based in a different approach using a posteriori definition based threshold of difficulties in functioning with an integral and universal model.
- The results have allowed to measure prevalence of disability and they have been useful for policy making and resource allocation



Further information:  
Patricia Nilda Soliz Sánchez  
[cif@salud.gob.mx](mailto:cif@salud.gob.mx)  
[Patricia.soliz@salud.gob.mx](mailto:Patricia.soliz@salud.gob.mx)